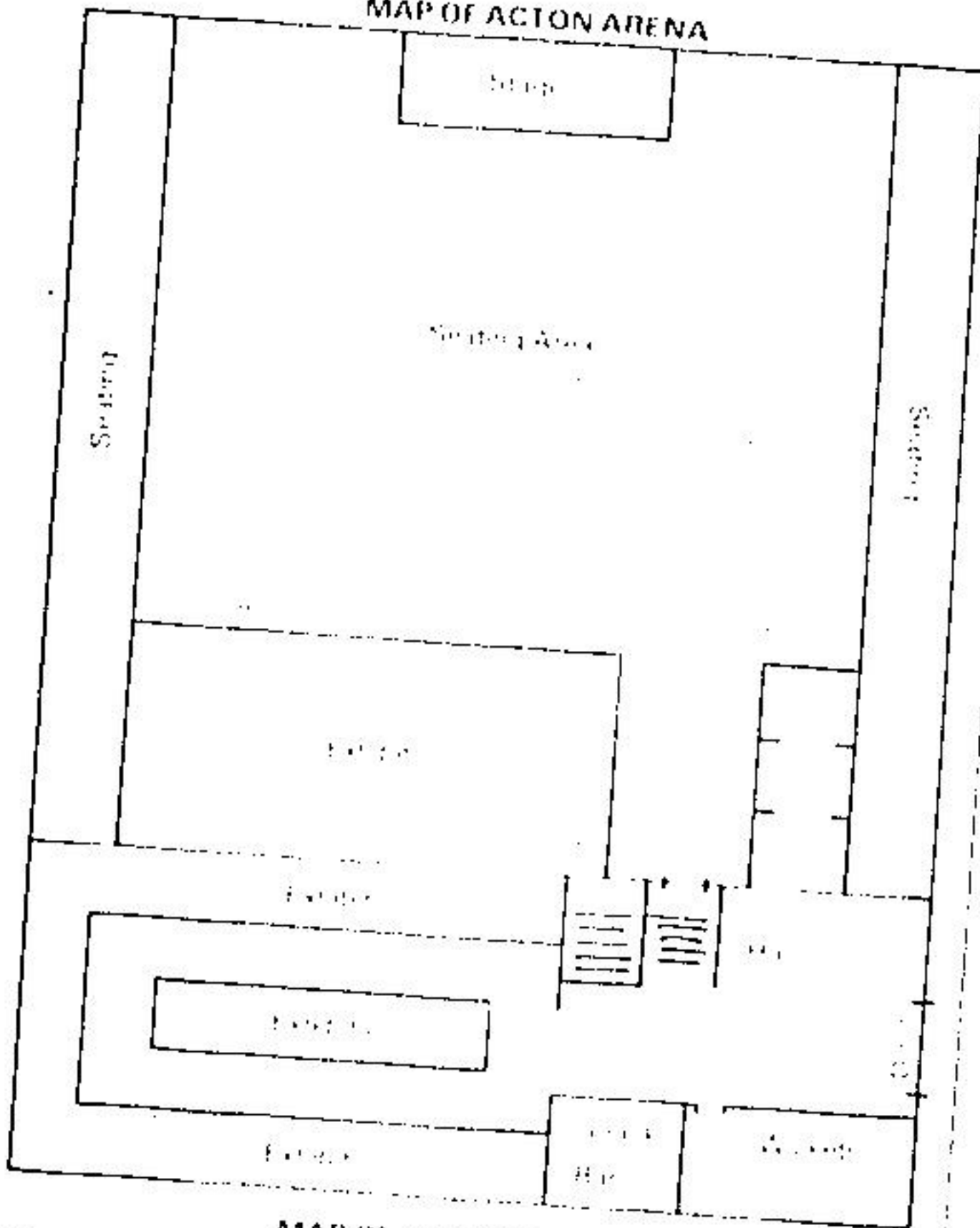
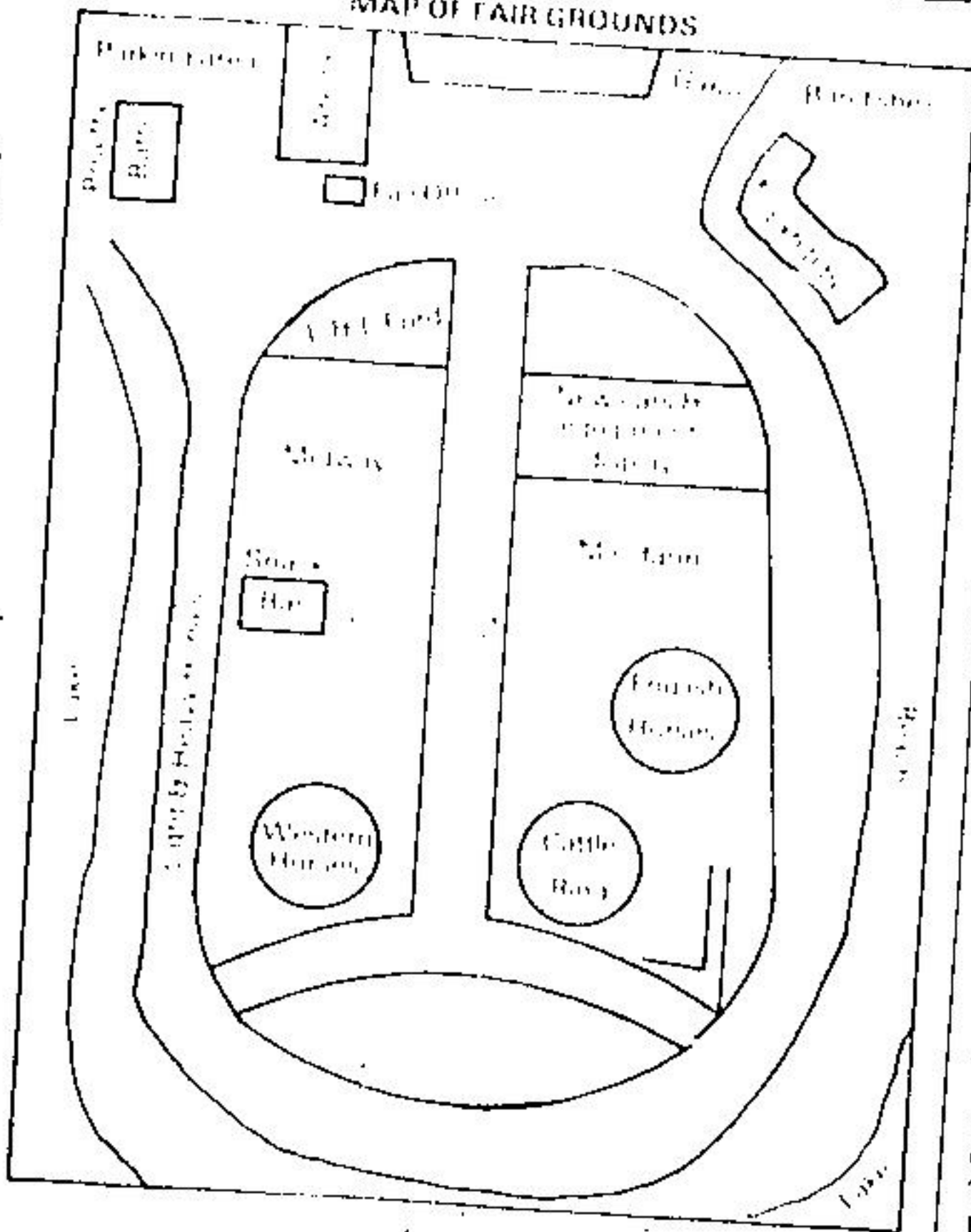


MAP OF ACTON ARENA



MAP OF FAIR GROUNDS



# Acton Agricultural Society

Gates open at 4.00 p.m.  
 Admission - Adults and Students \$2.50, Children \$1.00  
 Parking \$1.50

OPENING PARADE WITH THE ACTON CITIZENS' BAND  
 WITH A FULL MIDWAY IN OPERATION

HEAVY HORSE PULL 7.30 P.M.

Poultry exhibits with many exotic types of birds  
 with a wide range of colours

also

The floor exhibits in the arena will include: schoolwork, baking, domestic science, canned and preserved products, plants and flower displays, fruits and vegetables, junior exhibits, homecrafts, and many other interesting displays

In the hall area, you will find a large display of exhibits from within the Acton area

AND

ENTERTAINMENT  
 BY THE "NEW COMMERS"

in between the show is the

MISS ACTON FAIR QUEEN CONTEST

a new Queen for 1978-1979 will be chosen by the judges

SATURDAY at 2.00 p.m. sharp at the arena

Pre registration in the Arena: Friday, September 15, 7.30 to 10.30 p.m. Registration in the Arena, Saturday, September 16th, 12.45 to 1.45 p.m. Babies need not accompany parents for registration

Pre registration also at Toddlers to Teens Shop from Tuesday, September 5th, 1978 to Thursday, September 14th, 1978

- 2.00 p.m. Class 1A - Girls up to 6 months.
- 2.00 p.m. Class 1B - Boys up to 6 months.
- 2.30 p.m. Class 2A - Girls 7 to 12 months.
- 2.30 p.m. Class 2B - Boys 7 to 12 months.
- 3.00 p.m. Class 3A - Girls 13 to 18 months.
- 3.00 p.m. Class 3B - Boys 13 to 18 months.
- 3.30 p.m. Class 4 - Twins up to 2 years of age.

Prizes donated by: Acton Pharmacy, I.G.A. Foodliner, Greenock W.I., Dublin W.I., Bannockburn W.I., Toddlers to Teens, Mrs. Edgar Lutkea, Ladies Division, Acton Fair Board