

A SPECIAL FEATURE

Aggravating Winter?

Include two pivot features of the post end - one vertical and one horizontal.

The vertical feature allows raising and lowering to the level of the carrier's window which will vary in height especially if there is snow build up on the road surface. It also allows raising the box to a safe height to avoid being hit by the plow wing and allows "winging back" at least to the post which you already wishly placed well back from the road edge.

You can usually choose a "safe" level for your box which will be good for several days. In some areas boxholders have built a counter balance so that the box is left high out of harm's way except when pulled down by rope by the carrier when delivering and by boxholder when receiving or posting.

The horizontal pivot allows "to and fro" move-

ment which gives your box and the member on which it is mounted "somewhere to go" to escape the bombardment flying snow and/or ice as the plow passes by.

e) Several variations exist in the countryside but we think the main features are these:

- Place the post well back from the roadway out of the reach of road maintenance equipment.

- Place the box on a horizontal member extended from the post and at a height to allow a plow wing to pass underneath.

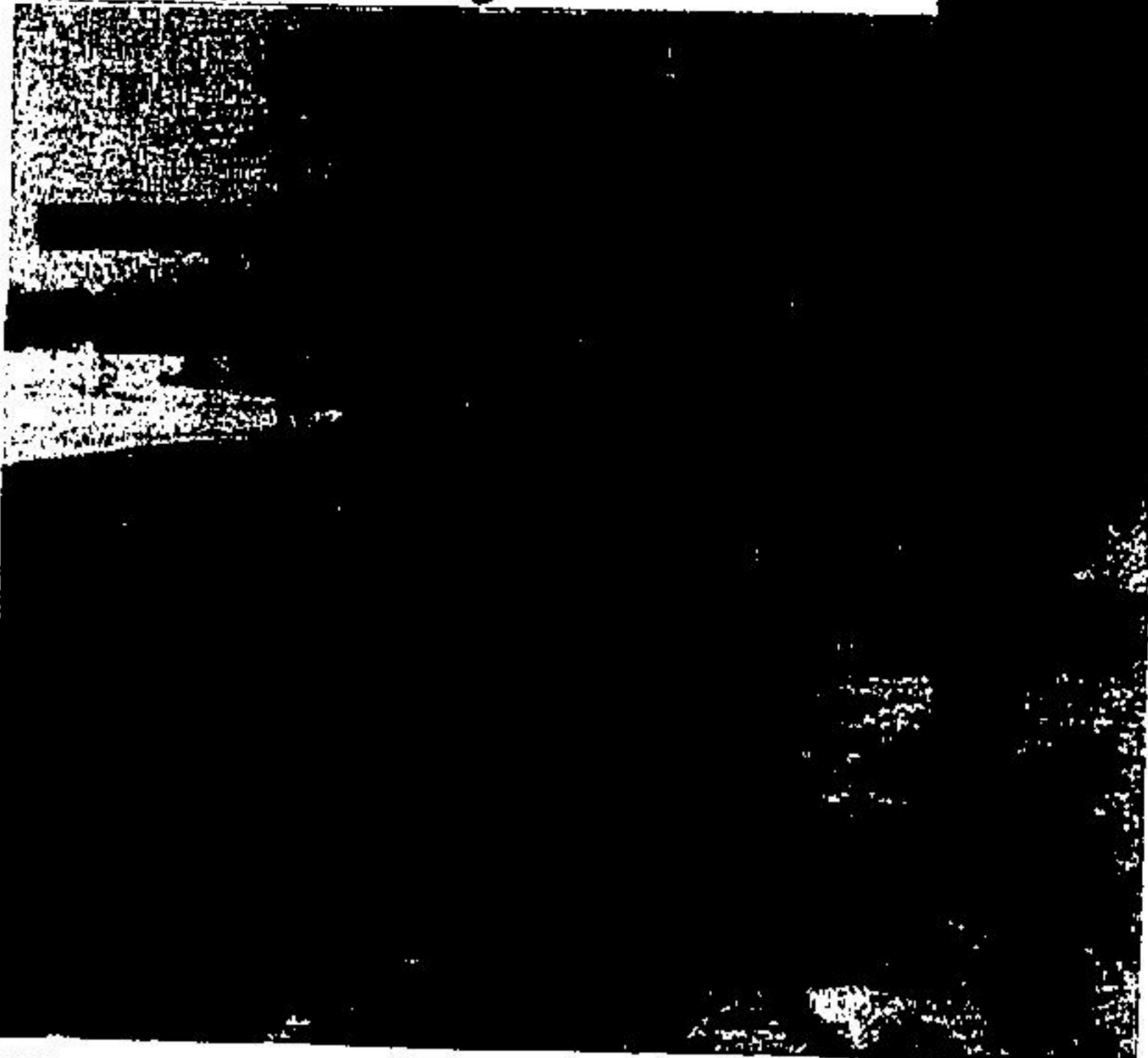
- Incorporate both a vertical and a horizontal pivot feature at the post end of the horizontal member.

- A reflector on side of the box or horizontal member gives further protection.

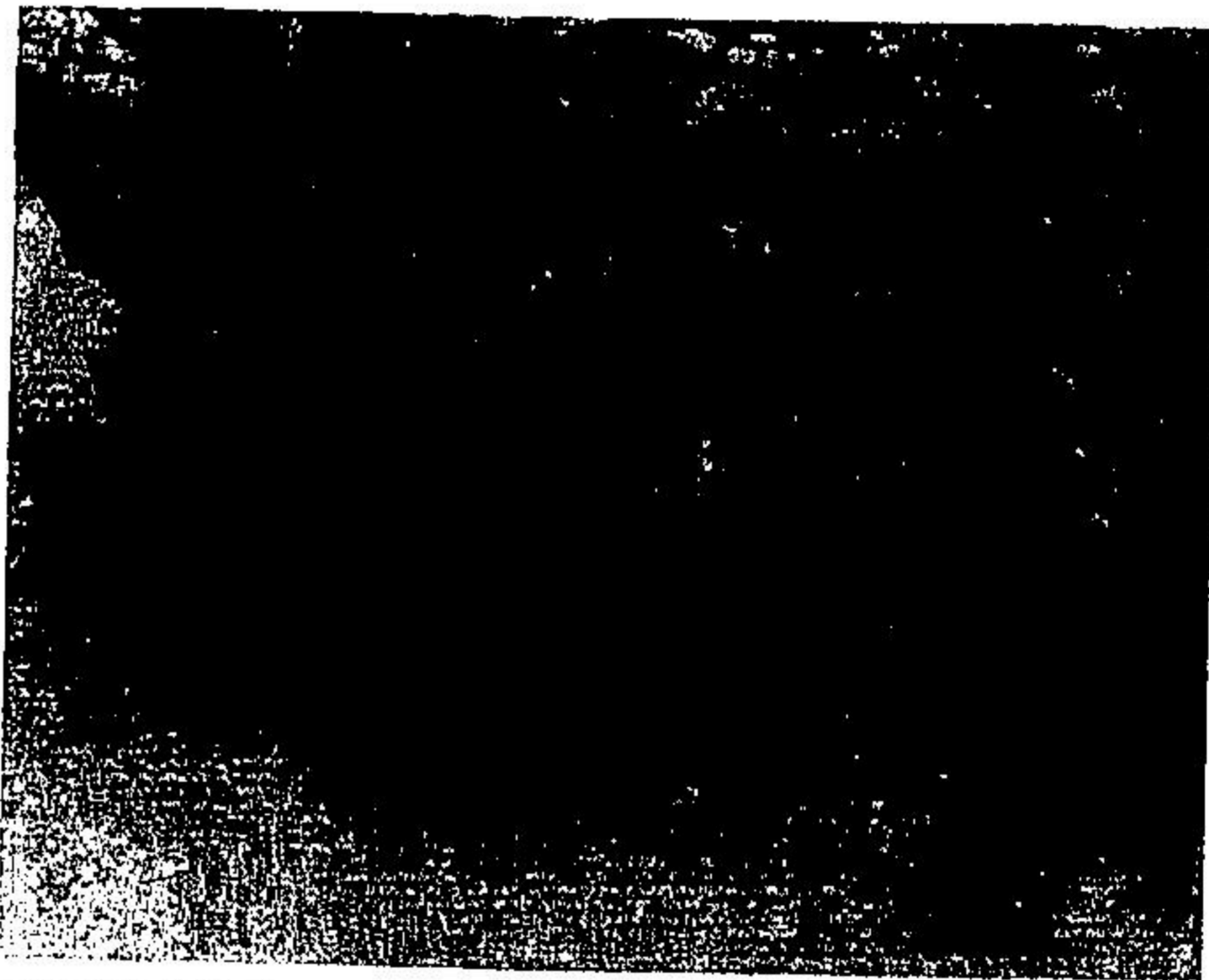
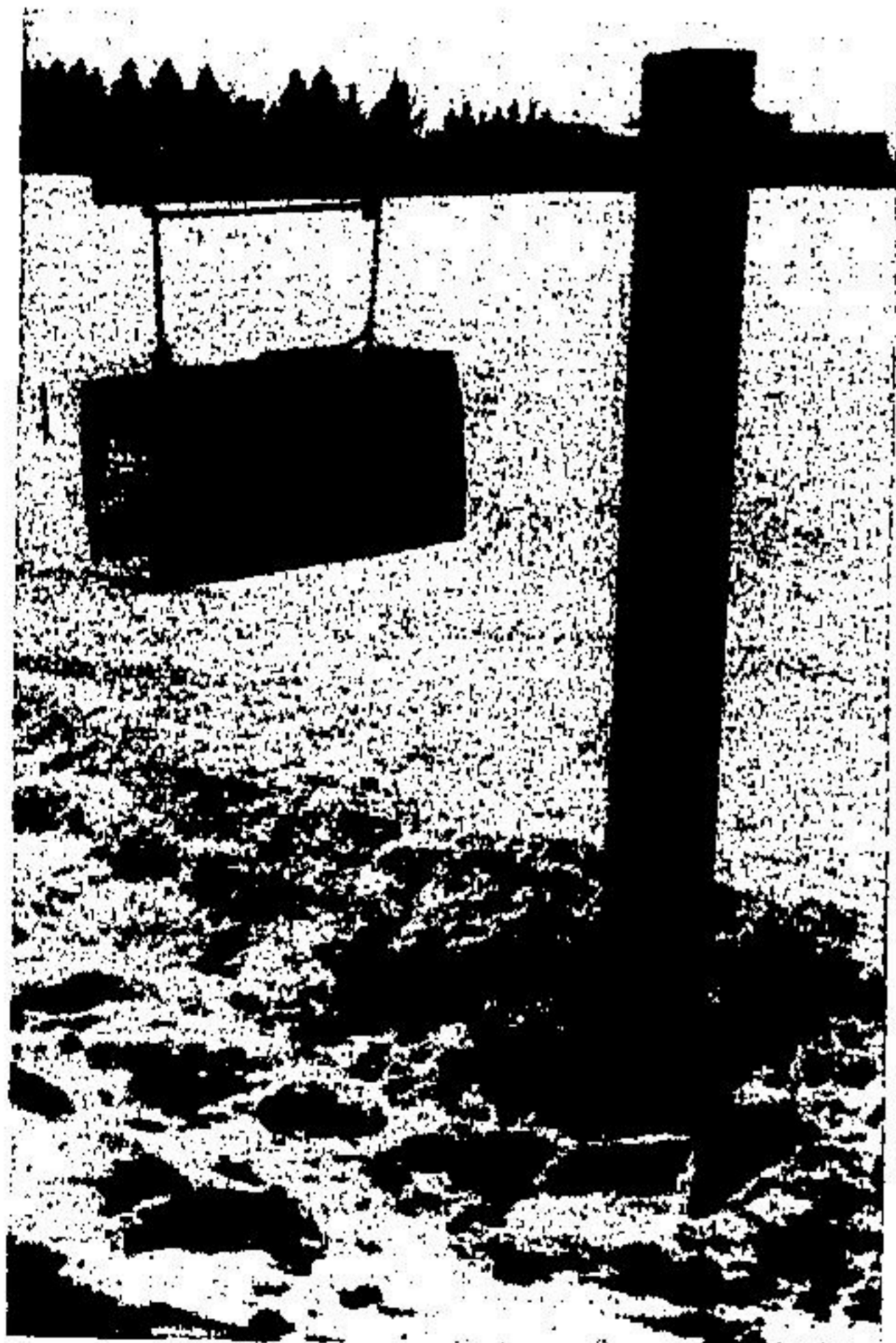
- Keep it simple and non-sophisticated.

- Be sure your installation meets with the approval of the authorities involved.

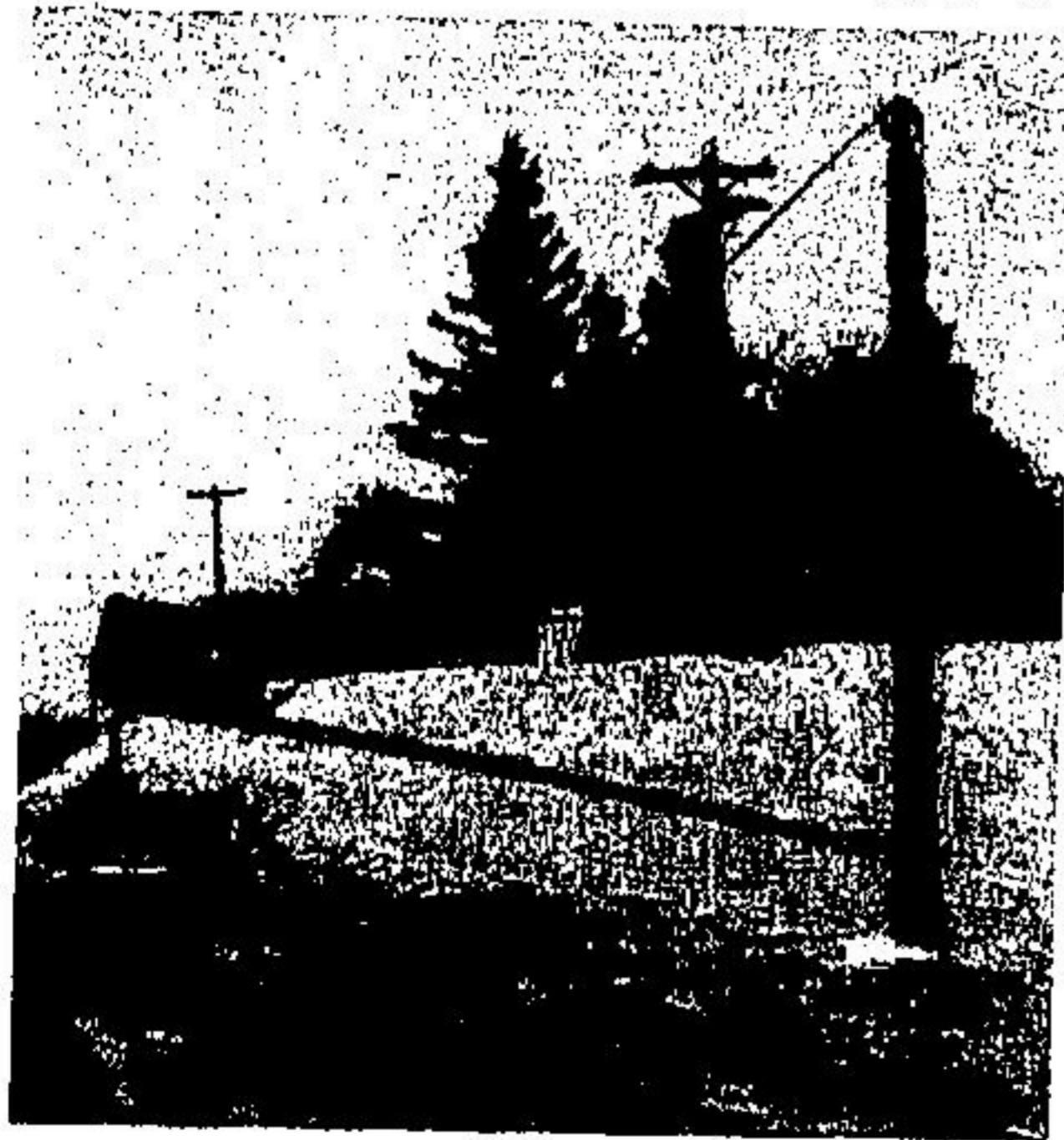
Many Many Survived



SUCH AS THESE ONES slung from a stout arm offset from a solid post located back from the shoulder of the road. Note old posts remaining without box, a reminder of a set up that did not work.



NOT ALL BOXES escaped damage from flying snow. Although the post itself placed well back is relatively safe the box is rigid and such to being battered.



THESE WILL SURVIVE AGAINST MOST ODDS These two examples incorporate several of the factors of rural mail box survival although all may not be obvious from the pictures. See our suggestions and drawing incorporating these various ideas.

