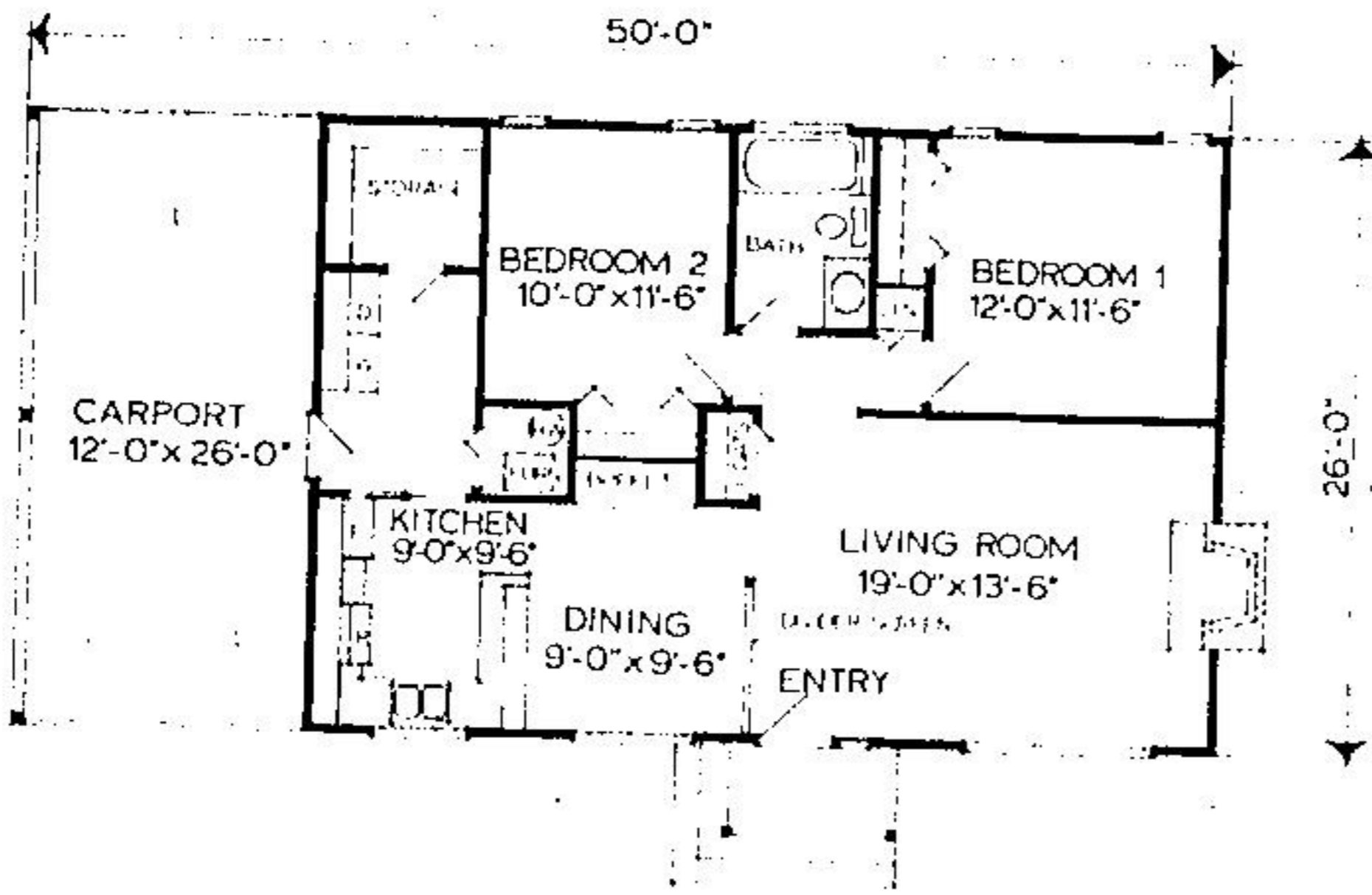
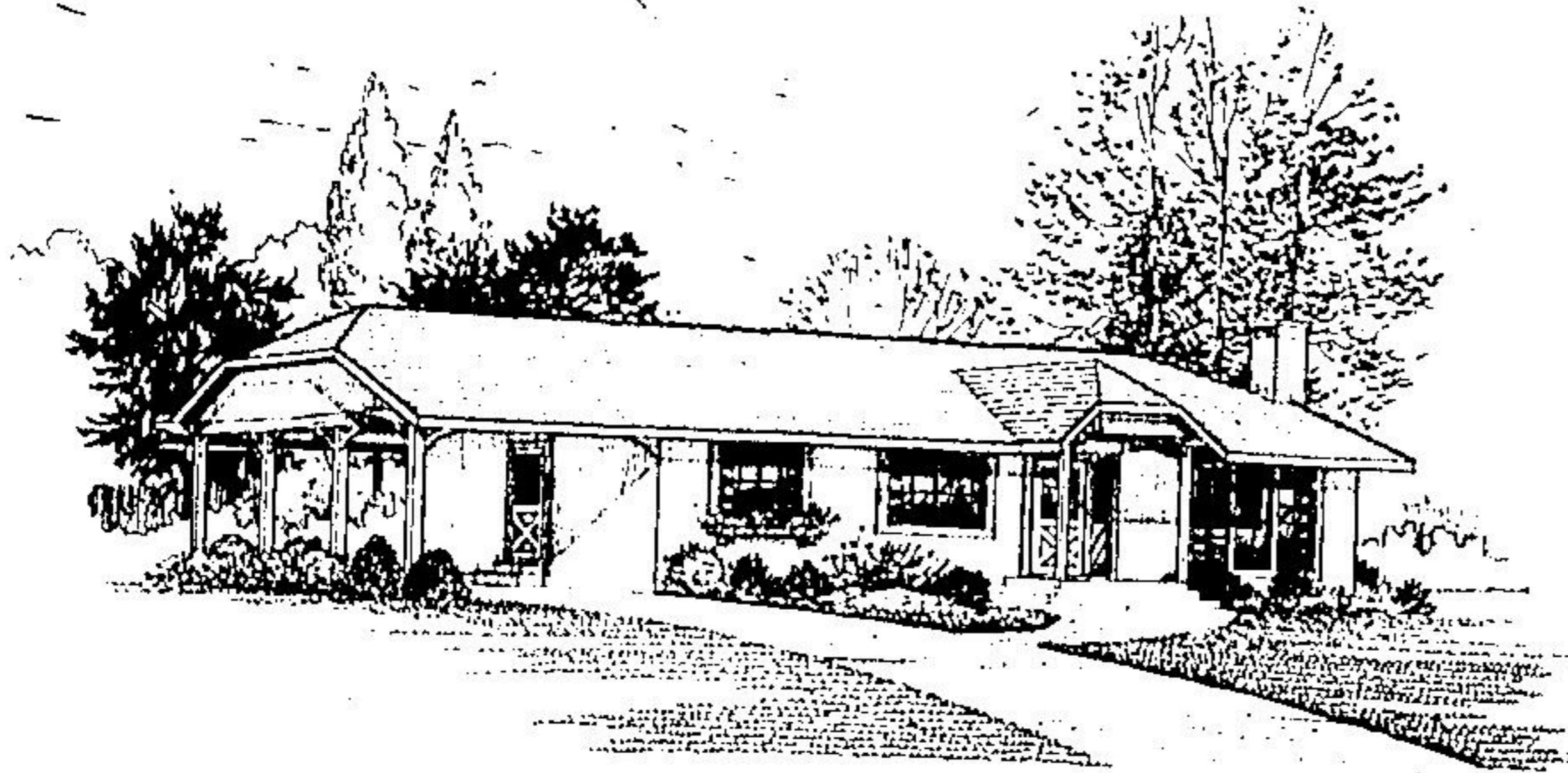


PLAN OF THE WEEK



MAIN FLOOR
988 SQ FT
PLAN NO. P-5-2-278

TWO BEDROOM COMPACT HOME

Plan No. P5-2-278
Featured this week is this smaller home plan, which would be ideal for a retirement home or a summer cottage.

While it has under a thousand square feet of finished area, this plan manages to achieve room sizing which can readily accommodate your furniture. That can often be most important to consider when planning a retirement home. If you're moving from a larger to a smaller home, it's best to consider furniture arrangement at the planning stage. That way you'll be sure to choose the plan which best suits your needs.

The exterior shown is of stucco, with a standard shingle roof. Also shown is the use of "wood accent" trim. Use rough cedar, or standard wood trim, and paint with an earthy colour to add character and warmth. Use cedar shakes as an alternative roof covering, or perhaps rough cedar, aluminum or vinyl siding.

The gables are shown sloped for effect, but this plan is available with a standard roof. The carport can be left as illustrated, or closed in at the time of construction. Perhaps it might be wise to close it in later on if a tight budget is a consideration.

From the front entry, you immediately enter the large living room with its own fireplace. The windows here are ceiling to floor to take good advantage of a view, and let in lots of sunshine and light.

Adjacent to the dining room is the modern U-Shape kitchen, a delight for easy food

preparation, and ideally designed for appliance placement. There's lots of cupboard space, and the storage room is close at hand for an extra food or home canning cupboard.

The washer and dryer are located between the kitchen and storage room in the back hallway, which also houses the furnace and hot water heater in a small out-of-sight utility room—broom closet.

The two bedrooms each have two narrow ceiling to floor windows and ample closet space. The three-piece bath is located conveniently between the two.

All in all, this plan provides a maximum of utility from a minimum of space.

Plans for design No. P5-2-278 may be obtained at a cost of \$51 for a set of three and \$9 for each additional copy. Allow \$2 to cover postage and handling.

To view more than 100 well-designed quality homes of every type, send for the current publication of the Home Plan Catalogue, available for \$2.60 (\$2.25 plus 35 cents postage and handling). Make all cheques and money orders payable to "Plan of the Week" and mail to:

PLAN OF THE WEEK
c/o. (Georgetown Independent) 324 Columbia Street
New Westminster, B.C. V3L 1A6

NO JOB FOR AMATEURS

Selling a house is a full time business. It requires knowledge, training, experience, salesmanship, and plenty of long hours and hard work.

It is no job for an amateur.

G. ALEC JOHNSON LTD.



2 MILL ST. E.
ACTON



853-2086



A REAL GEM
Set on approximately 2 acres of attractively landscaped grounds, this quality split level home features 3 large bedrooms, 3 baths, ground floor family room with fireplace and walkout to large patio, custom eat-in kitchen, separate dining room, rec room, games room, ground floor laundry, double garage and separate storage building. Must be seen to be appreciated. Asking \$107,500.



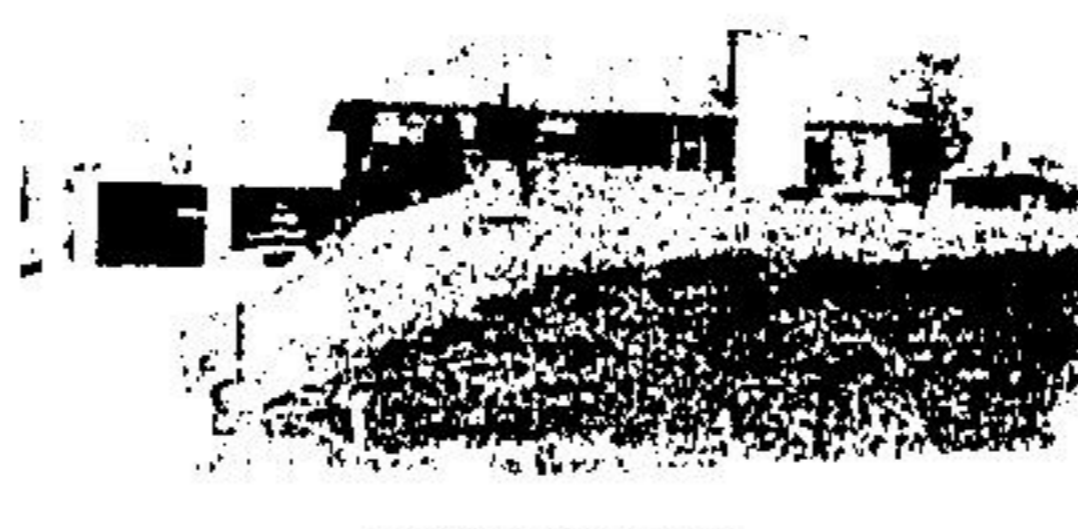
RETIREMENT HOME
Centrally located to all amenities, this brick bungalow features a large kitchen, 2 bedrooms, 2 porches, bathroom, living room and full basement and it's set on a large lot, ideal for a garden. Reduced to \$42,500.



HAVE HORSES?
Then see this 20 acre property with fenced paddocks, a large, fully equipped barn with excellent box stalls, a pond and a 4 bedroom brick and aluminum sidesplit located on a paved road close to main hwy. south of Acton. Call today for all the features included with this property. Asking \$129,900.



SEE THIS
Set on an attractively landscaped lot in Fairy Lake area, this spacious tri-level is in immaculate condition and features a ground level family room, 1 1/2 baths, 3 bedrooms, extra large modern kitchen, formal living room and broadloom throughout. It's a must to see at only \$55,900.



COUNTRY SPECIAL
Pleasant country living can be yours with this spacious brick rancher set on a large lot minutes from Acton. This home features 3 bedrooms, 4 pc. bath, separate dining room, living room with stone fireplace, eat-in kitchen, rec room with bar and fireplace, and double garage. Priced at only \$63,500.



PICTURESQUE VIEW
of Fairy Lake set on a beautiful landscaped lot with two patios and a built-in gas BBQ. This attractive 4 bedroom brick side split also features two 4 pc. bathrooms, eat-in kitchen with stove and fridge included, rec room with bar and more. Asking \$59,900.

FIRST TIME BUYERS
For only \$35,900, and a low downpayment, you could own this attractive end unit townhouse featuring 3 bedrooms, living and dining room with walkout, 1 1/2 baths, recreation room, and large garden shed.

CONSIDER THIS
Under a new Mortgage plan you can now purchase a home with as little as \$1,500. down payment and one low monthly payment of \$202.00. This is based on only one mortgage at 10 1/2 % interest. Call now for more details.

THIRTEEN ACRES
Building site located on a paved road south of Acton close to Hwy. 25, 300' frontage, half bush, overflowing stream. Asking \$45,000.