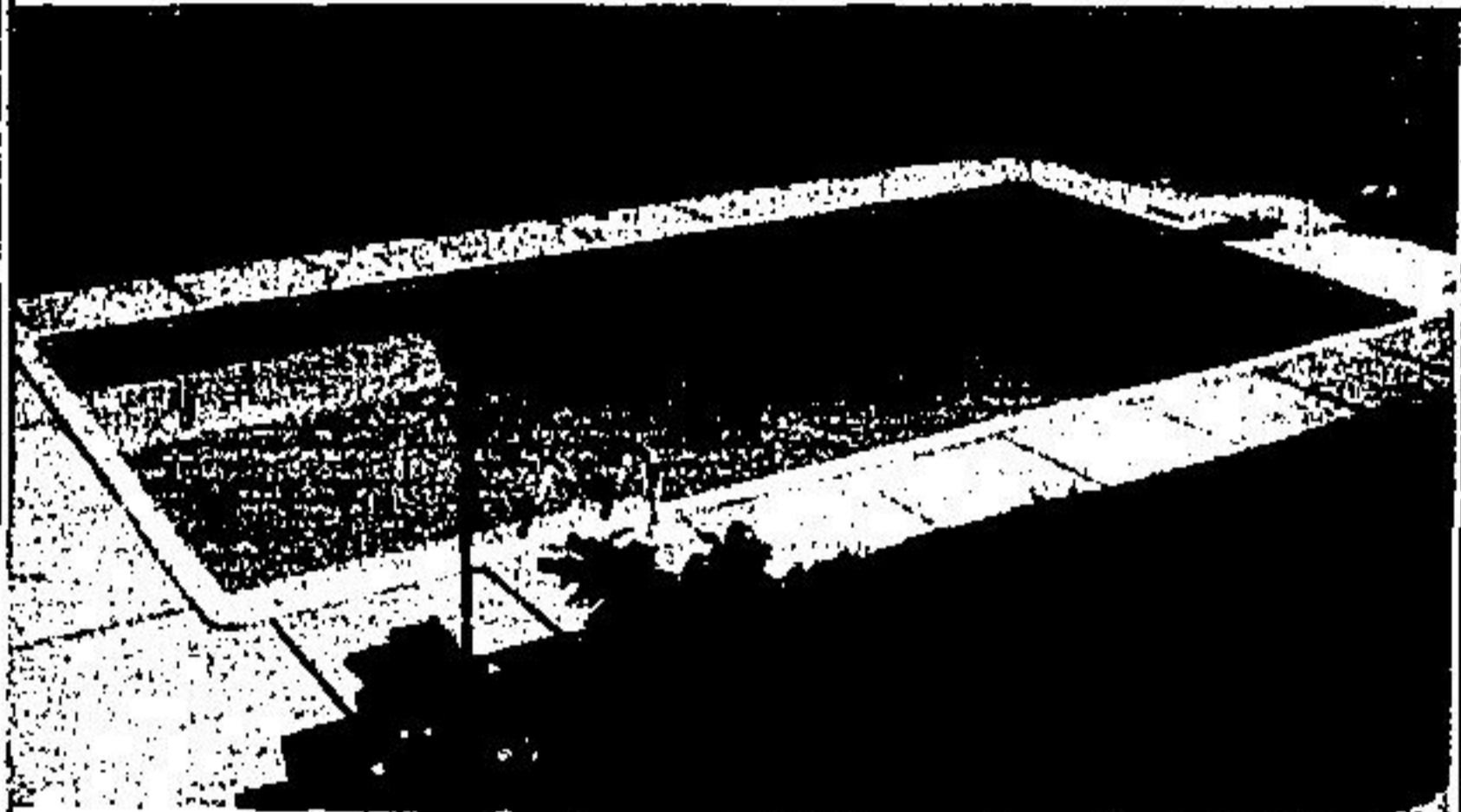


# Milton Pools-Sales & Accessories

529 Main Street East, Milton, Ontario

## THE GREAT OUTDOOR SHOW SPECIALS...



### SPECIAL SHOW PRICE *On Capital (INGROUND) Pools*

A 16' x 32' Inground Pool  
COMPLETE WITH JACCUZI FILTRATION SYSTEM  
• Ladder • Wedge Anchors • Vacuum Kit • Maintenance Kit

**NOW ONLY \$5,049<sup>00</sup> INSTALLED**

\*SURCHARGE ON DIFFICULT ACCESS AREAS.

### FLOWTRON "BK" SERIES

Model No. BK 5000

Unique lantern style frames in black weatherproof steel with zinc Iridite coated screens and grid system.

Exclusive heat-pipe and insect attractant dispenser for luring day flying pests plus 30 watts of "black light" energy for attracting photosensitive night flying insects.

Uses optimum combination of black light and black light blue lamps (each 15 watts) for maximum effectiveness. Ideal for areas of approximately 1/2 acre. Equipped with new SELF-CLEANING "vertical-rod" grid system, molded Teflon insulators and heavy duty transformer for optimum performance and minimum clogging.

**\$149<sup>00</sup> each**

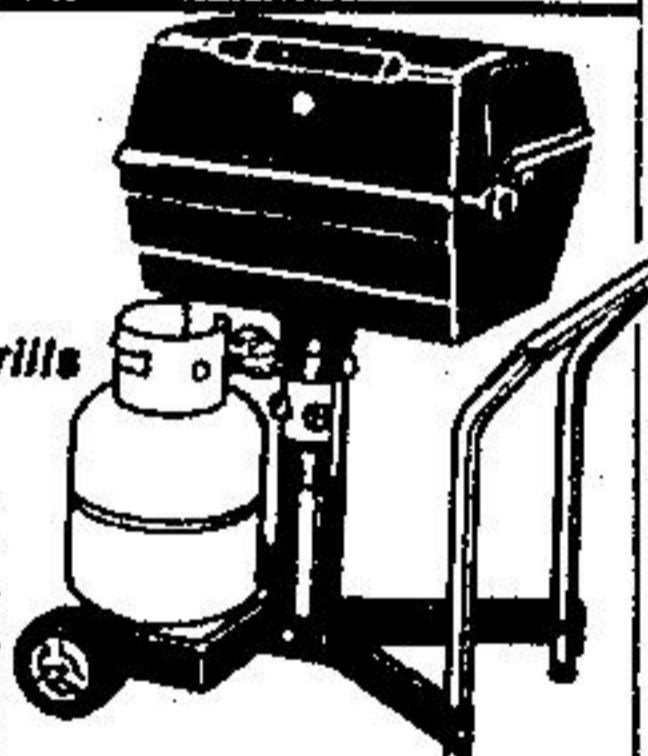


MODEL NO. BK-5000  
The Original DAY-NITE Bug Killer

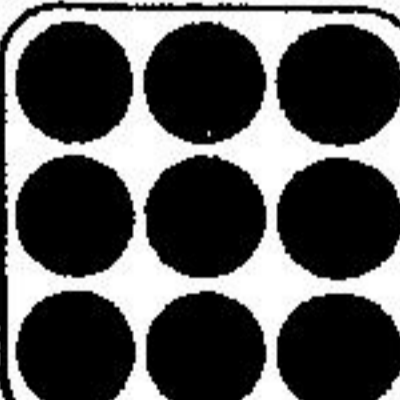
### EMBERMATIC™ GASGRILL BY ARKLA

The World's Largest Manufacturer of Gas grills  
**Flavor Twin GRB-40-EL**

• Total 40,000 BTU's (20,000 per side) • Dual heat control knobs to snap set at High, Medium or Low • Cast-iron dual "H" burner permits direct or indirect cooking • LP or Natural gas • Total 451 square inches cooking surface • Stainless steel cooking grids • Permanent post, patio base or cart mounting option • Lid mounted heat indicator • Chrome finish warming rack • Ember-Lighter lights grill instantly—no matches required! • Child-safe removable control knobs



SHOW PRICE **\$339<sup>00</sup>**



### SEALED AIR SOLAR POOL BLANKETS

• RAISE SWIMMING POOL TEMPERATURES 10°-15°  
• REDUCE POOL HEATING COSTS 60% - 100%  
• DRAMATICALLY SAVE ON POOL WATER AND CHEMICALS

New 11 Mil Liner 16' x 32' size **\$159<sup>95</sup>**

### FANTASTIC SHOW PRICES ON POOL CHEMICALS

WE CARRY A COMPLETE LINE OF:

- CHEMICALS • HEATERS • LADDERS • FILTER SYSTEMS • PARTS • SLIDES
- VACUUM KITS • TOYS & GAMES • DIVING BOARDS
- FREE WATER ANALYSIS • WHIRL POOLS

ASK US TO QUOTE ON YOUR FENCING & DECKS

# Milton Pools

529 MAIN ST. EAST  
MILTON, ONT.

**878-8770**

SHOW PRICES IN EFFECT 4 DAYS ONLY

## Come & See Our

# KEEP ON TRUCKIN

## DISPLAY

At Milton Mall's

## Greater Outdoor Show

FEATURING

### THE DATSUN SPORTRUCK



### Perfect For The Outdoor Enthusiast

All your friends will be envious of your new pick-up with its all steel body, rugged frame, roomy interior and economical 2-litre overhead cam engine. For that extra versatility you can add a camper on your Sportruck. Camping, biking, hauling... whatever... this 1/2 ton can take it!

### THE DATSUN 510



### Perfect For Family Motoring Trips

If your family motoring trips resemble a troop movement the 510 is the perfect car for you! Like all Datsuns it has low maintenance requirements and great gas mileage, but it doesn't have your ordinary family/economy car interior. It has colour co-ordination, deep pile carpeting, full instrumentation, excellent standard features, not to mention the loads of storage space. There's even room for BRUNO, the St. Bernard!

**North End Datsun Ltd.**  
610 Martin Street, Milton, Ont

Phone 878-4137 878-4138