

Blue eyed Arabs?

Halton Hills has its own gas and oil discoveries

by Ward Chesworth
University of Guelph

We are currently going through an energy crisis and the western nations have suddenly realized how dependent they are on gas and oil for the energy that keeps our society running. Nowadays, we think of the Arabs as the primary producers of these "fossil fuels," but surprisingly enough the modern petroleum industry started right here in Ontario.

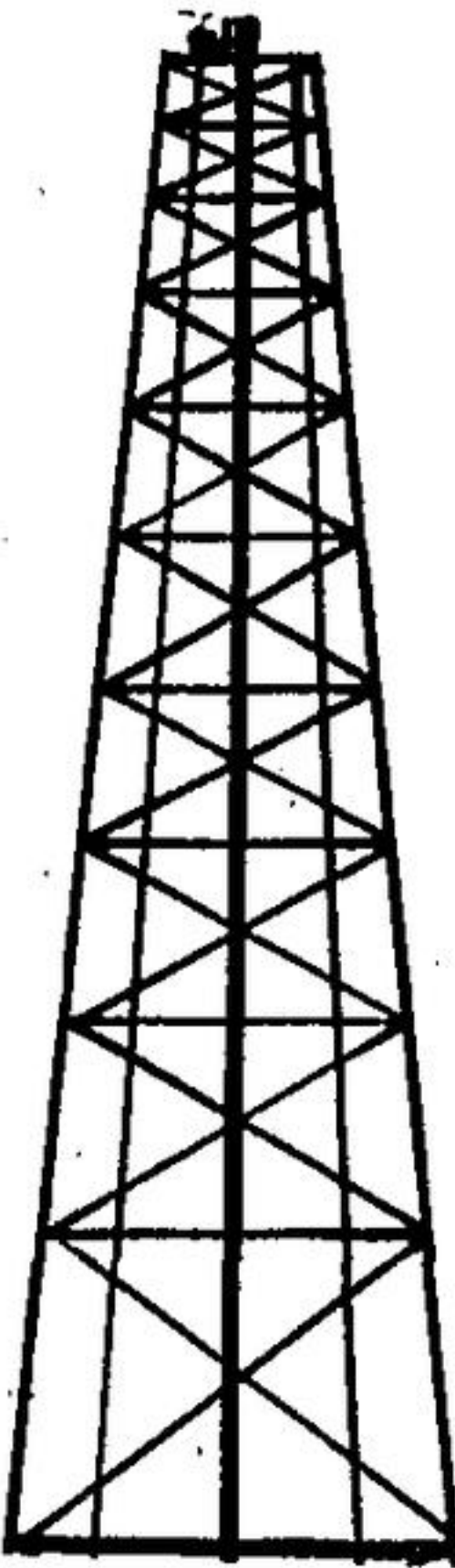
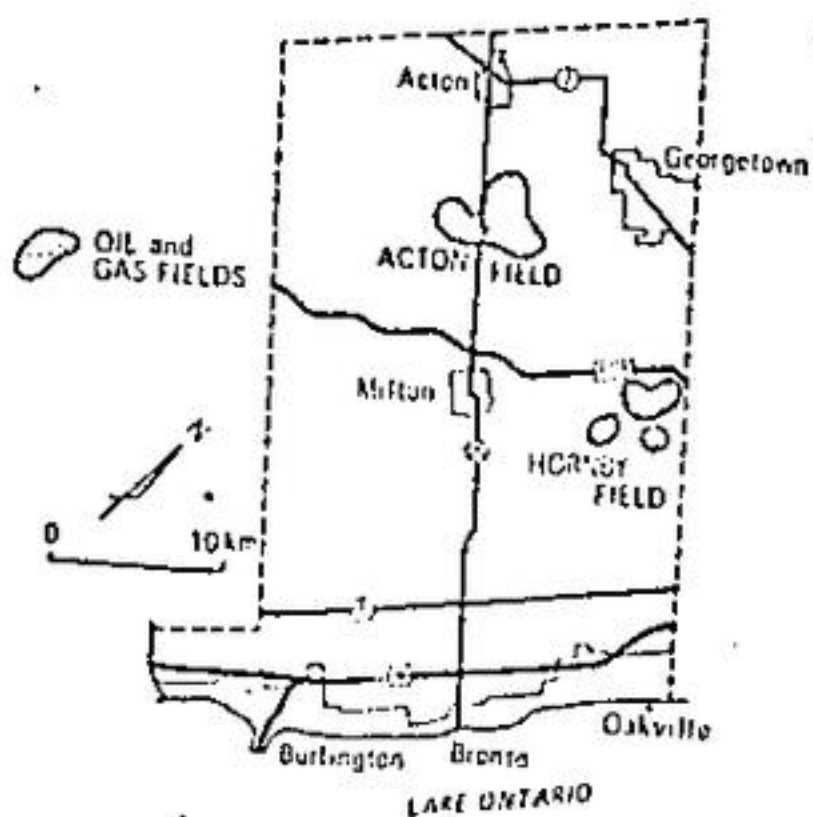
It was near the western Ontario town of Petrolia that the first successful oil well in the world was sunk in 1858. Since then oil and natural gas have been found in many places in the southern part of the province, particularly along the shore of Lake Erie.

In the fifties, two small discoveries were made in Halton County: the Acton field (1954), which produces gas and oil, and the Hornby field (1959) which produces gas alone. In both of these fields, the reservoir is a particular type of geological structure called an anticline, a fold where the two sides slope away from each other.

In the anticlines found in what is now Halton Region, a porous limestone containing the mineral dolomite (calcium magnesium carbonate) is trapped between two types of impervious rock. Oil and gas migrate upwards through the porous limestone and collect in the apex of the fold, where the non-porous cap-rock prevents them from going any higher. Only by drilling a well can they be extracted.

But where does the oil and gas come from? The answer is very simple. When plants and animals die, they normally decay and leave no traces behind. Occasionally (especially with organisms that have hard shells or skeletons), they become entombed in sediment, that over a long period of time, hardens to sedimentary rock.

The shells or skeletons that are now part of the solid rock are called fossils. Usually, the soft parts of the original animals and

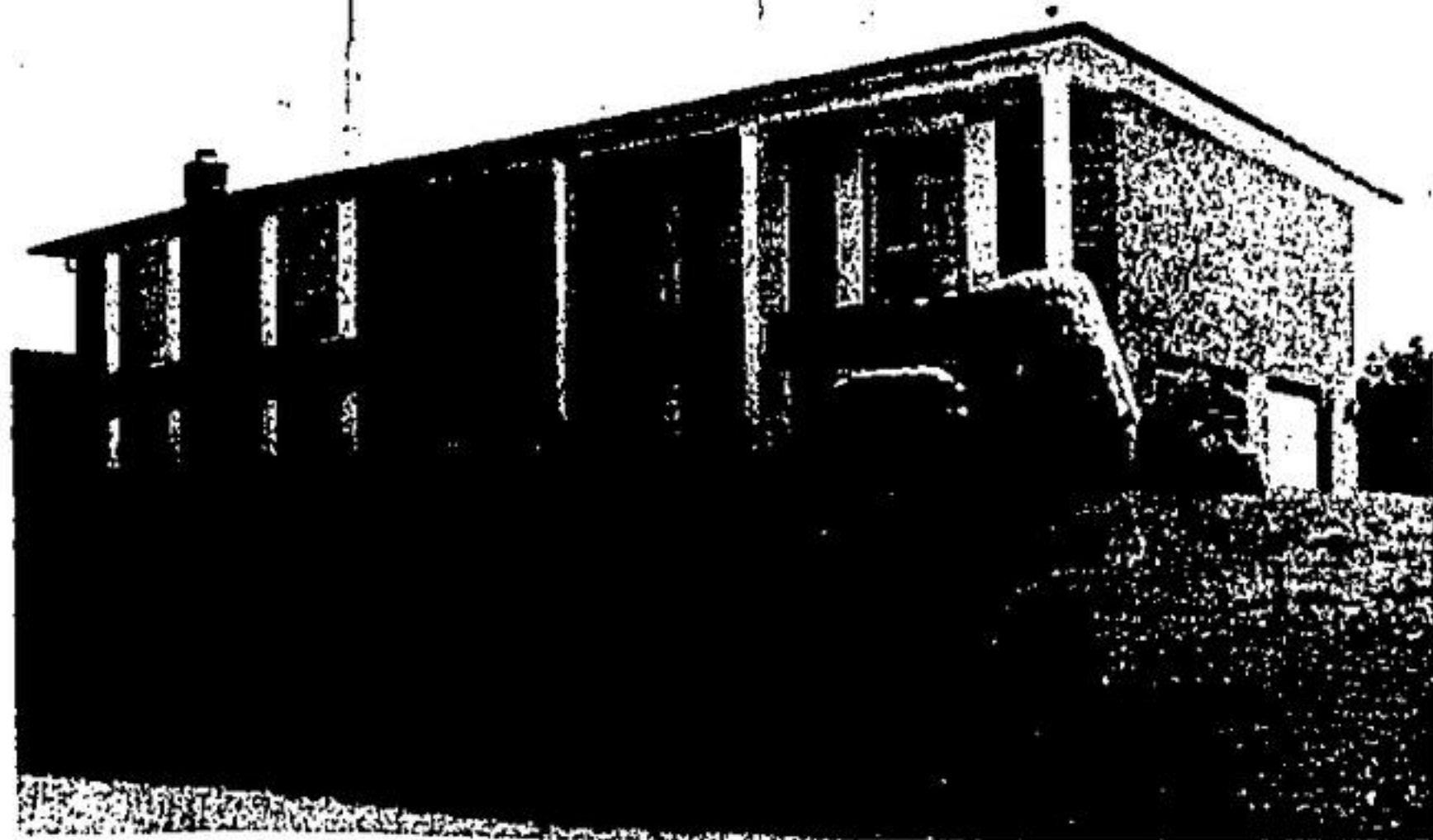


plants decay completely, but under certain conditions (lack of oxygen for example) decay is only partial and compounds of carbon and hydrogen are produced.

These compounds or hydrocarbons can be burnt to give energy, and they are the formative constituents of natural gas and oil. Because of the way they originate, you can see fossil fuel is an appropriate name.

All the energy of living things comes ultimately from sunlight. Plants use solar energy directly in the process called photosynthesis. We obtain the energy by eating plants or by eating other animals that have eaten plants—and so on, the chain may be infinitely long.

The hydrocarbons in oil and gas reservoirs, coming as they do from the decay of organisms, are therefore fossilized sunlight. In Halton Region, fossil fuel was formed by the breakdown of organisms that lived more than 40,000,000 years ago. So the energy we release when we burn that fuel is from the very much younger sun that shone on earth all those vast millennia ago.



Semi-custom homes available in Hillsburgh

Every homeowner knows the feeling of liking their new home, but wishing there was a window here, or a bigger bedroom there.

Glendevon Estates, in Hillsburgh, are solving this problem by building semi-custom homes, from a basic flexible design. In these 15 homes, now under construction, room sizes can be changed, windows placed where the buyer wants them, more expensive broadloom laid, or cupboards enlarged or made smaller depending on the needs of the individual family.

Glendevon Estates, part of Glendevon Enterprises, headed by President Dave Meal of Limehouse, are being handled by Finn H. Poulstrup Real Estate, Norval.

Buyers are helped in their color choices by an advisory service given by the company to help co-ordinate kitchen cabinets, tile, carpeting and painting. "Nobody has to take the advice, of course, if they have distinct preferences, we'll be delighted to do exactly what they want," said Mr. Meal. He pointed out they are extremely careful in selecting their sub-contractors, so the wishes of the clients are carried out exactly.

"If this development is as successful as signs indicate, the company may use the same semi-custom approach in other areas we own scattered throughout the surrounding townships," said Mr. Meal.

The homes designed and constructed by the Terrish Group, range in size from 1350 square feet to 2000 square feet, finished, with prices starting at \$59,000 and running to \$71,980.

The seven different models including a bungalow, a raised bungalow and various split level designs, are constructed of brick and aluminum. All models have three bedrooms, although the larger homes can be redesigned to include four bedrooms. Fireplaces are

designed right in, and all but the lower priced homes have two bathrooms, and double garages. The lower priced ones have one bathroom and a single car garage.

The lots backing on farmland are served with town water, but have their own septic tanks.

"Our homes are for people looking for a quality home at a lower price than they would find elsewhere," commented Terry O'Brien, manager of the Estates, "and I think we've succeeded."

President Dave Meal is enthusiastic about the village of Hillsburgh as a place to live, he says the community spirit is a marvel and points to the Potato Festival and Bluegrass Festival as events far beyond what would normally be expected from a place of 600 to 700 people. He explained the Medical Centre was built by public subscription as was the new arena, helped along by Wintario grants.

Minor injuries

Milton detachment of the OPP investigated an accident on 7 Highway at the Limehouse Road Saturday at 3:30 p.m. when a 1976 Chrysler driven by John Grant of Georgetown was stopped in the westbound lane waiting to turn into a private drive. Police said a 1975 Suzuki motorcycle driven by Ronald Haefner of 344 Peel St., Acton, was following the Grant vehicle and failed to stop, striking the front left of the Grant vehicle. Haefner and a passenger, each received minor injuries. Police said there was \$600 damage to both vehicles.

We're Moving
to larger facilities
715 Main St. E.
as of Nov. 1/77

Same Phone Same Service

Culligan®

715 Main Street East, Milton
878-2474

ACTON FALL FAIR
BABY SHOW
SATURDAY, SEPTEMBER 17th
2:00 P.M. — IN ARENA

REGISTRATION

- Pre-Registration in the Arena - Friday Sept. 16th, 7:30 to 8:30 p.m.
- Registration in Arena - Saturday Sept. 17th, 12:45 to 1:45 p.m. (Babies need not accompany parents for registration)

***PRE-REGISTRATION ALSO AT TODDLERS TO TEEN SHOP - FROM TUESDAY, SEPT. 6 TO THURSDAY, SEPT. 15TH**

PRIZES AND RIBBONS

- Class 1A - For Girls up to 6 Months of Age
- Class 1B - For Boys up to 6 Months of Age
- Class 2A - For Girls from 7 - 12 Months of Age
- Class 2B - For Boys from 7 - 12 Months of Age
- Class 3A - For Girls from 13 - 18 Months of Age
- Class 3B - For Boys from 13 - 18 Months of Age
- Class 4 - Best twins up to 2 years of Age

Pet of the week



CLANCY OR MUTSKY is a half-Siberian Husky and half-German Shepherd pup owned by 11-year old James Thomas of 149 Elizabeth Drive. The pooch, says James, is clumsy. Also Clancy plays with his tail, says James.

Inventory funded

Dr. Frank A. Philbrook, Member of Parliament for Halton has announced a \$1,000 grant to the Human Services Council Regional Planning Subcommittee. The grant is awarded under the assistance to Community Group Program which the secretary of state department is responsible for.

Dorothy Craig, director of nursing at Halton Region Health Unit, will be in charge of the project.

The project will establish a working information base. It will provide an inventory of existing health and social services in the region, a documentation of standards

for the same services in other regions and a setting of regional standards for Halton. Public workshops will also be held in order to inform the community on how to use the health and social services available in the region.

The Human Services Council disbanded as such in October, 1976. However, according to Peter Marks, who was chairman of the old council, the membership has continued to work in an advisory capacity to the regional planning department. Their efforts have been focused on helping to develop the social component of the regional official plan. The group retains its former name.

Philbrook named VC

Dr. Frank Philbrook, Halton Liberal Member of Parliament was appointed Vice-chairman of the Standing Committee on Health, Welfare and Social Affairs. "I back up the Chairman," said Dr. Philbrook. "I help the Chairman to conduct meetings, organize legis-

lation that has to be brought forth in the legislature and operate the steering committee.

"Our committee works on legislation pertaining to the Ministries of Health and Welfare, Urban Affairs and Consumer and Corporate Affairs," he added.

The seven different models including a bungalow, a raised bungalow and various split level designs, are constructed of brick and aluminum. All models have three bedrooms, although the larger homes can be redesigned to include four bedrooms. Fireplaces are

Bauer Flying Machines

Tomorrow's shoes here today.

BAUER
Performance that runs ahead of time.



available at

TACK & TOGS

128 Guelph St., Hwy. 7, Georgetown 877-1818

BIG 3 DAY CLEARANCE
Hush Puppies

MEN'S REGULAR PRICE \$24.99 to \$34.99
SALE PRICE \$18.98

WOMEN'S REGULAR \$21.99 to \$26.98
SALE PRICE \$14.98

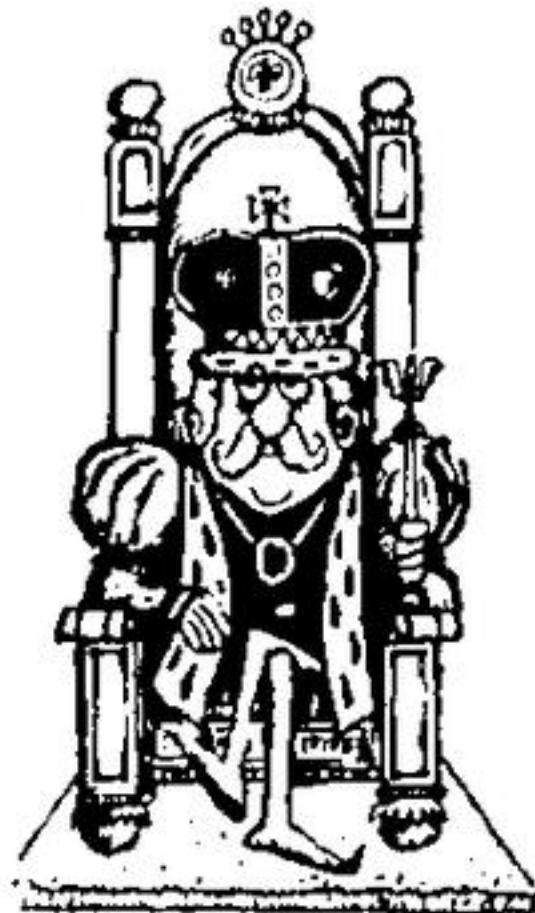
Selecta FOOTWEAR

250 MAIN ST. 878-7445

RETAIL ★ WHOLESALE

Syer's flooring

CARPET KING



MAKES IT SIMPLER

WITH FREE INSTALLATION!

MINIMUM 20 SQ. FT. — 12' X 15'

FROM \$7.95 to \$31.95 SQ. YD. **INSTALLATION UPOLSTERY EXTRA**

UNDERPAD AS LOW AS \$1.29 SQ. YD.

LIMITED TIME OFFER

Syer's flooring
Thurs. & Fri. till 9

878-4178 ... 878-4179
310 STEELES AVE., MILTON