

Expropriation...

(Continued from page 1)
Hydro project.

The hearing on the bottom section was adjourned last December in order for the courts to decide whether Mr. Meyrick was to look at the alternate route question.

The meetings on the bottom portion of the line will reconvene early next month, also in Acton's Legion.

Lawyers again
At the central section's hearings are several of the same people from the bottom section group. Representing Ontario Hydro again is Tom Marshall. For the opposition there are again lawyers Leon Parolan and Richard Howitt. John Schneider is acting as agent for some people.

Toronto lawyer Alan S. Blott along with R. J. Patton and Gord Chapman are representing other parties opposed to expropriation. Part of the day's debate concentrated on the question of whether alternate routes for Ontario Hydro's corridor in the central section should be heard by Mr. Meyrick.

Both sides seemed to have in mind the consequences of the divisional court's ruling about alternative routes in the bottom section. Hydro lawyer Marshall contended alternative routes in the middle section have already been

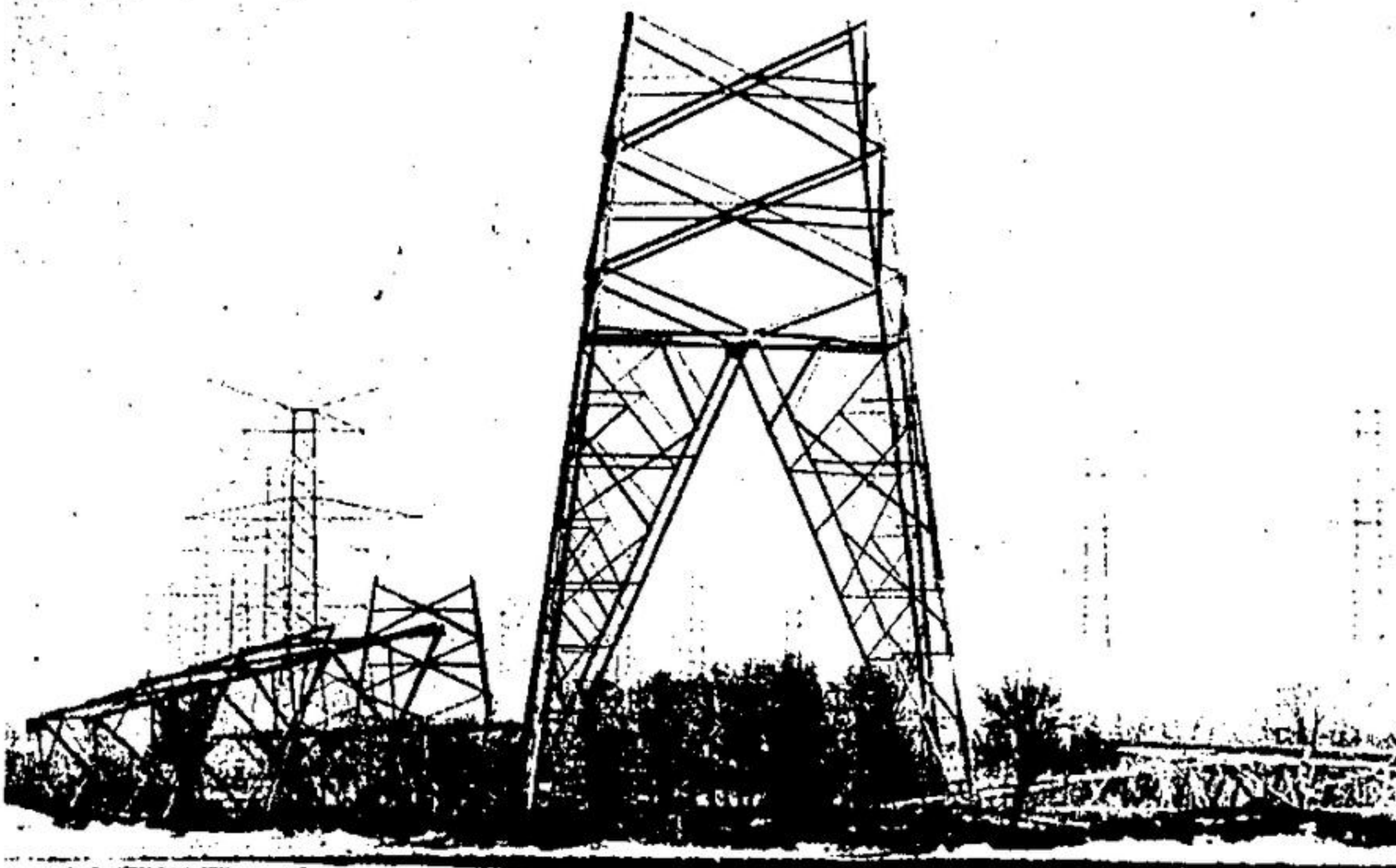
considered by the Environmental Hearing Board (EHB) which held meetings at Hillsburgh in the summer of 1975.

Lack credentials
Debate on the merits of the EHB report and how it compares with the Solandt Commission report received major attention from Mr. Blott, for the residents.

"It (EHB) lacks the legal credentials of a public enquiry," Mr. Blott said. Later he said that the EHB didn't have the technical knowledge of Hydro that Solandt had.

Taking another fact, Hydro's Mr. Marshall said: "It's true the task of the Solandt Commission was unfettered and the Environmental Hearing Board was limited. By then matters had progressed to where a specific project was envisioned and that's the project." Solandt's work preceded the EHB by at least a year.

During Monday, Hydro introduced 22 pieces of evidence, all of which Mr. Meyrick had not seen before. Mr. Meyrick agreed with lawyer Blott who said he thought it disgraceful that after nearly five hours the hearing was still trying to find out what's what.



ONTARIO HYDRO TOWERS are being erected along the southern side of Highway 401, over Trafalgar Road. The towers stand at attention while waiting for wire that will link them in parallel lines from Nanticoke to Pickering. Hydro is in the middle of expropriation hearings

for a proposed connecting corridor from the Bruce Nuclear Generating Station to Milton. The hearings, in Acton's Legion Hall, resume Thursday. They were adjourned after the Monday start.

Court decides in favor of Hydro

The following is a copy of the decision of the division court concerning whether or not the hearing officer in expropriation hearing for the bottom section of the Bradley to Georgetown Ontario Hydro Corridor may hear about alternative routes.

The decision, delivered March 3, went two to one against hearing officer Donald Meyrick listening to evidence on alternatives to Hydro's chosen route.

Lawyers for opponents to expropriation will seek permission to appeal the court's decision.

The three judges were Reid, Krever and Rutherford of the divisional court of the Supreme Court of Ontario.

Hearing officer Meyrick adjourned the expropriation hearing, in Acton's Legion, last November after three and a half days. The adjournment, until April, was taken so the court could decide about the alternative routes issue.

J. Reid

The question raised by this case is whether an inquiry officer conducting a hearing into the proposed expropriation of a route for electrical power lines must receive evidence of possibly alternate routes. The application is for judicial review of a ruling of Donald F. Meyrick, Q.C., sitting as an inquiry officer pursuant to The Ex-

propriations Act, R.S.O. 1970, c. 154, s. 7.

At the outset, I should record that counsel agreed to an amendment to the style of cause adding Thomas Beer and Michael Beer as applicants. That amendment was granted.

The matter involves a proposed expropriation by Ontario Hydro of certain lands owned by a considerable number of persons including the applicants. It is Hydro's desire to expropriate these lands in order to create a corridor about two hundred and fifty feet in width that would traverse the applicants' lands. The events leading to this point reach back some distance in time but may be briefly stated.

Ontario Hydro is given the responsibility of producing and distributing hydro-electrical power in Ontario. Increasing demand for electrical power led to consideration of prospective routes for new transmission lines in the vicinity of Metropolitan Toronto. In obvious recognition of the extent of public interest in this respect, by an Order-in-Council dated June 21, 1972, Dr. Ormond M. Solandt was appointed a Commission of Inquiry under The Public Inquiries Act, 1971, to make recommendations on the transmission of power between Nanticoke (west of Toronto) and Pickering (east of Toronto) for the information and consideration of the Provincial Secretary for

Resources Development.

The Commission held a series of public hearings. Ultimately, the Commission reported in March, 1974. The report recommended a particular route.

In December 1975, by Order-in-Council, Hydro was authorized to acquire certain lands described in a schedule to the Order-in-Council. These were the lands that lay along the recommended route.

The Order-in-Council

(Continued on page 7)



Sheridan student getting experience

Michael Bennett
Michael Bennett is a Sheridan College journalism student who will be spending the next two weeks working on the Free Press to gain some practical experience.

He's been here for two days and is already thinking of becoming a professional student because working for a living is just too hard. If you see him on the street be kind to him. It's most likely that he's only going for lunch anyway. Like all journalism students he is best kept inside where he can do no harm rather than being allowed to run free and misquote people.

He is also the lone figure you might see hitch-hiking in front of C. K. Brown's store. Pick him up. He's a nice guy. He lives near Rockwood.

Beware of french fries

By Larry Brassard
Fire Prevention Officer

Many kitchen fires are caused by overheated cooking oil.

To get your french fries golden yellow keep the heat low to medium and stick around until they're done.

By turning the heat up high and talking to the neighbors at the same time your french fries are going to be really crisp, along with your kitchen.

LIGHTING SHOWROOM
Retail and Wholesale
GERRIE ELECTRIC SUPPLY CO. LTD.
Wholesale Electrical Distributor
9 Armstrong Ave. Geo.
877-2264
Mon. - Fri. 9 a.m. - 5 p.m.
Sat. 9 a.m. - 12 noon

NOW REGISTERED
GET A CLEAR TITLE ON YOUR CLOSING DATE

from
\$35,500 5% down

Milton Tower

ONLY 76 HOMES
An excellent level of privacy with eight home styles to choose from. An urban lifestyle at suburban prices.

\$174 monthly mortgage payment (if qualified)

Sales Office: 81 Millside Dr., Milton
Phone: 878-8787

10 - 6 Weekends
12 - 7 Weekdays

Take Hwy. 401 to Hwy. 25, south to Main St., west on Main St. to Millside Dr.

MEENA REAL ESTATE

Now 8% Mortgages

Prices, terms and conditions subject to change without notice.

CARPET CORNER
11 MAIN ST., NORTH - ACTON -
• 853-3620 •
You Headquarters in Halton Hills for:
★ CARPETING ★ CUSHION FLOORING
★ DRAPERIES ★ CERAMIC TILES

Splash Flashes 853-3140

Synchro swimmers
by Judy Paterson

On March 2, 1977, 16 of Acton's Synchronized swimmers attended a Halton Hills regional meet in Milton at E. C. Drury School for the Deaf.

The competition was composed of two basic categories: pre-set duet sequences (no music) and duets (with music). There were four teams competing and our girls' team placed third overall behind the well established clubs of Burlington Synchro and Burlington Y. The individual results are as follows:

Pre-set duet sequences: 10 and under Lori Fountain and Lori Turtcher placed 2nd, 11 and 12 Bev Glenn and Linda Kilpatrick placed 2nd; 13 and 14 non-card holders Sharon Vos and Sylvia Schetkile placed 2nd, 13 and 14 card holders Sharon Cook and Renata Brillinger placed 3rd, 15 and over non-card

holders Karen Glenn and Debbie Iglesias placed 3rd, 15

and over card-holders Anne Pickering and Liz Cooper placed 3rd.

Duets with Music: 13 and 14 years Sharon Vos and Sylvia Schetkile placed 3rd; 15 and over Anne Pickering and Debbie Iglesias placed 3rd. Our swimmers represented us very well and I was extremely proud of them. Congratulations swimmers!

GUELPH'S ONLY SPECIALTY LIGHTING STORE
CHATELAINE LIGHTING
240 York Road - Guelph - 824-0401
Multi Bright Ideas for all your Lighting Needs
EXTENSIVE SELECTION OF HOUSE FIXTURES
--Table Lamps
--Door Chimes
--Swag Lamps
--Vanity Cabinets
--Electric Heat (Baseboard and Portable)
--Central Vacuum Cleaning Systems
--Wiring Devices, Fixture Parts, etc.
--Ventilation (Hoods, Fans, etc.)
FREE PARKING
Open Daily, 9:30 - 5:30, Fri. 11:00 p.m.
Sat. 9 a.m. - 5 p.m.

BRING ENTHUSIASM!!! BRING YOUR FRIENDS!!!

AGES: 5 - 12 Years
WHEN: Monday - Friday, March 21st-25th, 1977
TIME: 9:00 a.m. - 3:00 p.m. and one slumber party (milk provided at lunchtime)
WHERE: Rose Room above the Georgetown Memorial Arena
COST: \$20.00/person
\$30.00/2 persons (Same Family)

School Break Survival

If you and your friends are looking for a great way of surviving the school break, then the Recreation & Parks Department has just the program for you. For five fun-filled days enjoy companionship, sports, games, crafts, swimming and skating.

Registration will take place in the Gordon Alcott Memorial Recreation Complex Hall on Wednesday, March 16th, 1977 from 6:00 p.m. - 8:00 p.m.
N.B. - A limited number of children can be accommodated in the programme.

I.D.A. DRUG STORES
"Well Worth Looking For"

"Winter's End" HEALTH SALE! PRICES EFFECTIVE UNTIL MARCH 19th
We Reserve the Right to Limit Quantities

Butler ADULT Dental Health Control Kit
Tooth-Saver Tools Included:
THE MIRROR
Spotlights hard-to-see tooth surfaces usually overlooked when brushing.
THE DENTAL FLOSS
"Right-Kind" Unwaxed Floss helps you remove plaque between teeth where most decay occurs.
THE TABLETS
They color the plaque bright red to reveal areas you miss when brushing your teeth.
THE TOOTHBRUSH
#411 Adult C.U.M. - with soft, rounded bristles for safe, effective brushing and thorough gum massage.

Only 99¢
While Quantities Last!

IDA FACIAL TISSUES 200's 2-Ply 2/99¢	BENLYN COUGH SYRUP 8 oz. \$1.88	IDA MILK OF MAGNESIA TABLETS 100's 74¢
IDA THROAT LOZENGES 20's 77¢	VASELINE INTENSIVE CARE LOTION Regular or Herbal 400 ml. \$1.44	IDA MINERAL OIL 40 oz. \$1.99
IDA ISOPROPYL ALCOHOL 70% 500 ml. 57¢	STAYFREE MINI-PADS 10's 47¢	IDA MINTHOLATUM DEEP HEATING RUB 3 3/4 oz. (94.4 gm.) \$1.77
	Dee-Tea Celsius Fever THERMOMETERS Only 99¢ EA. - BABY, ORAL, RECTAL	IDA SACCHARIN TABLETS 1/4 Grain 500's 1/2 Grain 1000's 88¢ \$1.77

glenlea drug mart
294 QUEEN ST. • ACTON • 853-2220