



RENNY SUE SMITH perches on the oak stair banister above the carved newel post.



LAREINE SMITH waters the forest of plants in the conservatory assisted by daughter Renny Sue.



PAT SMITH reclines behind his antique oak desk in the family residence at Rockwood.

## Recycled material shines in Smith's Rockwood home

by Jennifer Barr  
Using recycled materials without being an "environmental freak" is Pat Smith's way of describing the concept behind the attractive renovation of his Rockwood home.

Situated on the corner of Main and Harris Streets in the south end of Rockwood village, the Smith house is now a charming example of artistic warmth. But it wasn't always that way.

LaReine Smith, a minute dynamic real estate sales person, shudders when she remembers the horrors of the house they bought in 1973. The seventy-year-old house was in "desperate need of love", she says.

"Somebody must have got a deal on green paint," remarks LaReine referring to the hospital green color of all the plaster walls.

Fireplace thrice  
The first thing they did was paint everything white and sand the floors previously covered by linoleum. Beautiful oak boards came to life and said thank you.

The living room fireplace has been redone three times. The original was torn out and a white stucco job created but "it looked like an iced birthday cake," laughs LaReine. So it was replaced with a gracious pine covered fireplace featuring two heavy beams as a mantle.

Unfortunately, an accident last year caused the mantle to catch fire and ruin the whole thing. This time a professional job was done by Dunbar Brothers of Rockwood. The resulting fireplace features a hearth made from brick once used as ballast of an old ship from Scotland, weathered red brick facing, and once again, a huge beam mantle.

The living room, finished first for Christmas 1973, is a testimonial to artist-writer

Pat Smith's creativity and sense of design. A warm melange of antiques blend with modern pieces for comfort. An old carved rockers sits across from a denim multi-use cushion serving as a lounge. Effective lighting highlights the Hereford hide rug. Pieces of barn beam provide stands for plants. A solid oak table LaReine picked up at the Aberfoyle Flea Market doubles as a work desk for Pat.

LaReine does most of the antique hunting but Pat takes care of the finishing touches. "I like what he does," says LaReine "He has a fantastic sense of design. Pat can do anything."

Oodles of oak  
The reason for the purchase of the house, the fine-grained oak conspicuous in every room, comes into its own in the large central hall. The stripped oak staircase culminates in an ornate newel post.

Sections of brick wall revealed when old plaster was removed provide warm foil for the cork-covered walls in the dining area.

In an effort to provide extra light, Pat designed and built a glassed conservatory replac-

ing part of one wall. Pebbled floor accents the mass of enthusiastic plants winding their way into the cheerful kitchen. A small den, another addition, completes the garden annex.

LaReine is delighted with the realization of her kitchen design. She can see the bird feeder and her plants as she washes dishes.

The upstairs is not yet as complete as the downstairs, but sleeping becomes an adventure when you can choose between the brass bed in the master bedroom, daughter Shawn's waterbed, or daughter Penny-Sue's wonderful playhouse bunk, another of Pat's creations.

Start at one end  
The outside of the house is now finished in roughhewn

local batten board, but once was stuccoed plaster. LaReine remembers the plaster coming down behind sledgehammer blows in a welter of dust, dirt and several nice mce. The front porch was turned and brought out to the edge of the new den. A beautiful black cherry storm door with wrought iron latch saved from the torn down back shed graces the entrance.

Pat Smith feels people on limited budgets should look to older homes to provide renovation materials. His own remodelling was greatly assisted by the use of local material and taking the time to explore the many sources of used lumber, he says.

There are two ways of remodelling an older home,

he remarks. A professional designer can be paid and given carte blanche; or "you can start at one end and continue till you reach the other end."

"When it feels good it's home," he concludes.

The former Rockwood trustee says he never knows what he's going to do until he's done it. If he doesn't like it he changes it. He's very

### GUELPH'S ONLY SPECIALTY LIGHTING STORE

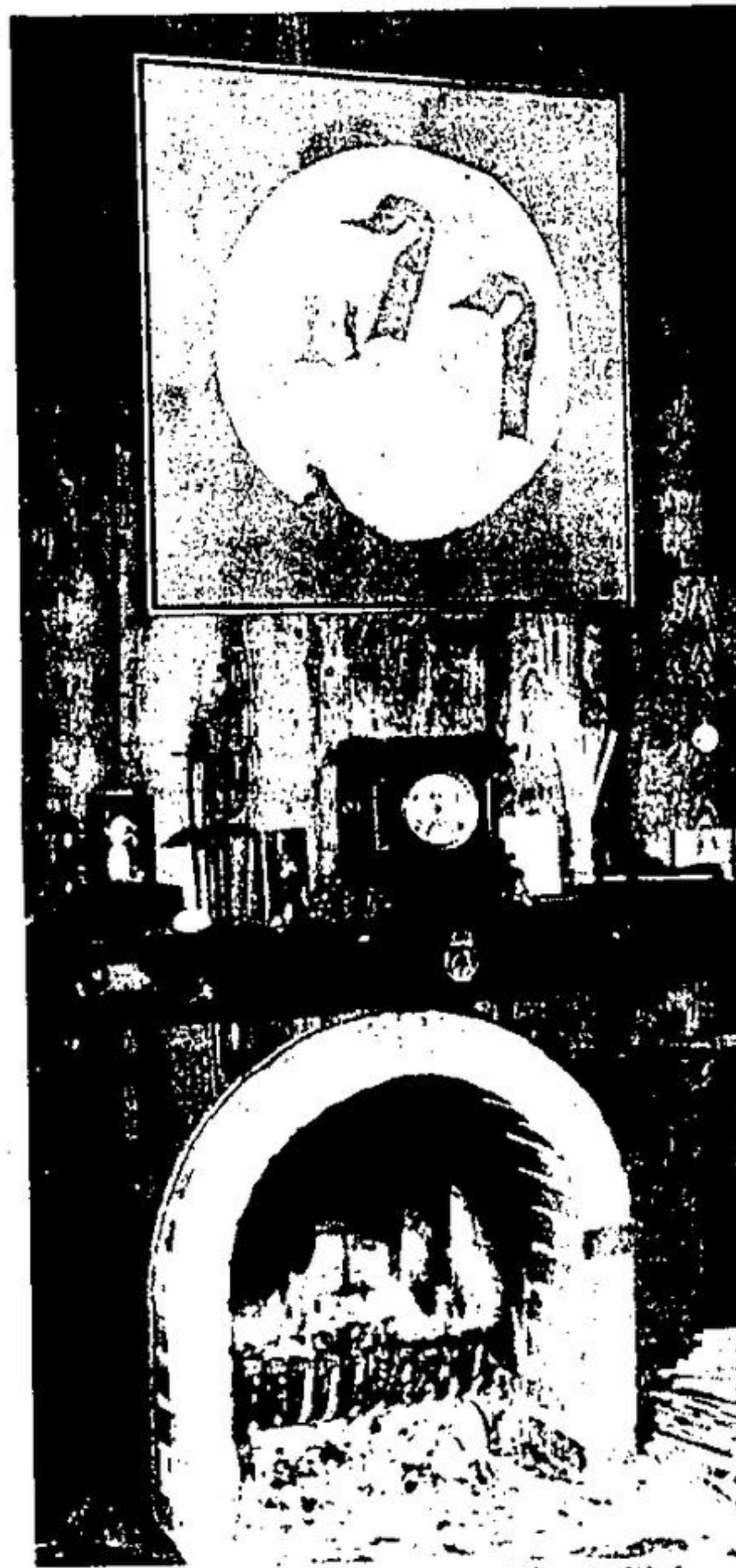
**CHATELAINE LIGHTING**  
240 York Road — Guelph — 824-0401

Multi Bright Ideas for all your Lighting Needs

EXTENSIVE SELECTION OF HOUSE FIXTURES

- Table Lamps
- Door Chimes
- Swag Lamps
- Vanity Cabinets
- Electric Heat (Baseboard and Portable)
- Central Vacuum Cleaning Systems
- Wiring Devices, Fixture Parts, etc.
- Ventilation (Hoods, Fans, etc.)

**FREE PARKING**  
Open Daily 8:30 - 5:30; Thurs. & Fri. 'Til 9 p.m.  
Sat. 9 a.m. - 5 p.m.



THE BEAUTIFUL fireplace of the Smith home features an original batik of Canada geese over the mantle.

### North West Oakville

## Site D limited to 100 acres

Any proposed landfill operation at Site D would be limited to about 100 acres, according to a report prepared by M. M. Dillon Consulting Engineers. The report was released last week. The region wants a 500 acre site for the major regional dump.

Site D includes about 250 acres of land in the southeast quadrant of Highway 25 and lower Base Line, in the northwest corner of Oakville.

The report claims that 150 acres of the site are not suitable for landfilling because of the presence of petroleum pipelines and hydro transmission towers.

On the positive side, the report indicates that surface drainage will not create a major problem. The site is, however, located over a ground water recharge zone

No details

Details of accidents in the district this past week were not available for the press Tuesday, due to holidays.

and only the western portion of the site could be used for landfill and still protect the aquifer in the Queenston Shale bedrock.

Drill rigs  
No drilling has been done on that site. The only site the drilling rigs have visited is Site F at Britannia and Tremaine Rds.

While the report rules Site D out as a major 20-year landfill operation, it could still qualify for a smaller site. But council hasn't been receptive to the idea of a four-site operation, proposed by Milton Council.

There has been no discussion on the most recent report. The Public Works Committee or Council is expected to consider the report early in the new year.

Drilling has been completed at Site F (Britannia Rd. - Tremaine Rd. area). Results of the drilling at Site F are also expected to be presented to council early in the new year. While those results have never formally been discussed, consultant Wally Wells has said the drilling produced no surprises. In other words, the drilling exercise has produced nothing to deter the region from using Site F as a dump.



THE CRUCIFIXION, a painting done by writer/artist Pat Smith, hangs on the wall of his Rockwood home.

**Choose it**  
from Canada's largest rental fleet of GM cars and GMC trucks.

**& Charge it**  
Tilden honors most credit cards.

**TILDEN**  
ANDREW MURRAY MOTORS  
45 Mountview Road N.  
877-6944  
GEORGETOWN

**V.W. Rabbits**

Reduced to clear  
New Or  
**76 Demos & Executive Cars**

QUALITY FOR:  
BANK PLAN FINANCING  
NO DOWN PAYMENT  
UP TO 48 MOS.  
LOW MILEAGE  
ALL MODELS

**BAZ MOTORS LTD.**  
VOLKSWAGEN PORSCHE AUDI HONDA  
Sales and Service  
199 Guelph St. Georgetown - 877 5286 or 876 1813

**HAPPY NEW YEAR**

FROM MANAGEMENT AND STAFF

Silverwood's Party Skimmed <b>2% MILK</b> \$1.19 3 Qt. Bag or Jug + Deposit	<b>MEAT FEATURES</b> Table Rite Beef <b>STANDING RIB ROAST</b> \$1.29 Lb. <b>RIB STEAKS</b> \$1.39 Lb. Sunny Morn Rindless Sliced <b>SIDE BACON</b> \$1.19 Lb. Pkg.	Canada Dry <b>GINGER ALE</b> 28 Fl. Oz. Bottle <b>29¢</b> Plus Deposit
Hospitality Sliced WHITE <b>BREAD</b> 24 Oz. Loaf <b>29¢</b>	IGA Assorted Varieties <b>MEAT SPREADS</b> 3 Oz. Tin <b>4 FOR \$1</b>	Maxwell House Instant <b>COFFEE</b> 10 Oz. Jar <b>\$2.99</b>
Caribbean Queen CHUNK <b>LIGHT TUNA</b> 6 1/2 Oz. Tin <b>59¢</b>	Christie's <b>RITZ CRACKERS</b> 16 Oz. Pkg. <b>89¢</b>	Silverwood's French Onion <b>PARTY DIP</b> 8 Oz. Tub <b>49¢</b>
Carnation Frozen <b>HASH BROWN POTATOES</b> 2 1/2 Lb. Bonus Bag <b>3 FOR \$1</b>	<b>FRESH PRODUCE</b> Florida Size 175's 2 Doz. <b>TANGARINES</b> \$1.00 Vine Ripe Produce of USA 2 Lb. <b>TOMATOES</b> 88¢ Produce of USA 2 Bunches <b>GREEN ONIONS</b> 39¢	Kraft Cracker Barrel MILD <b>CHEDDAR CHEESE</b> 16 Oz. Block <b>\$1.69</b> Sunlight Liquid <b>DETERGENT</b> 32 Oz. Bottle <b>89¢</b>

PRICES EFFECTIVE DECEMBER 29, 30, 31—WE RESERVE THE RIGHT TO LIMIT QUANTITIES  
FREE DELIVERY WITHIN TOWN (ACTON) LIMITS

**ACTON I.G.A.**  
8 Main St. North - 853-1960