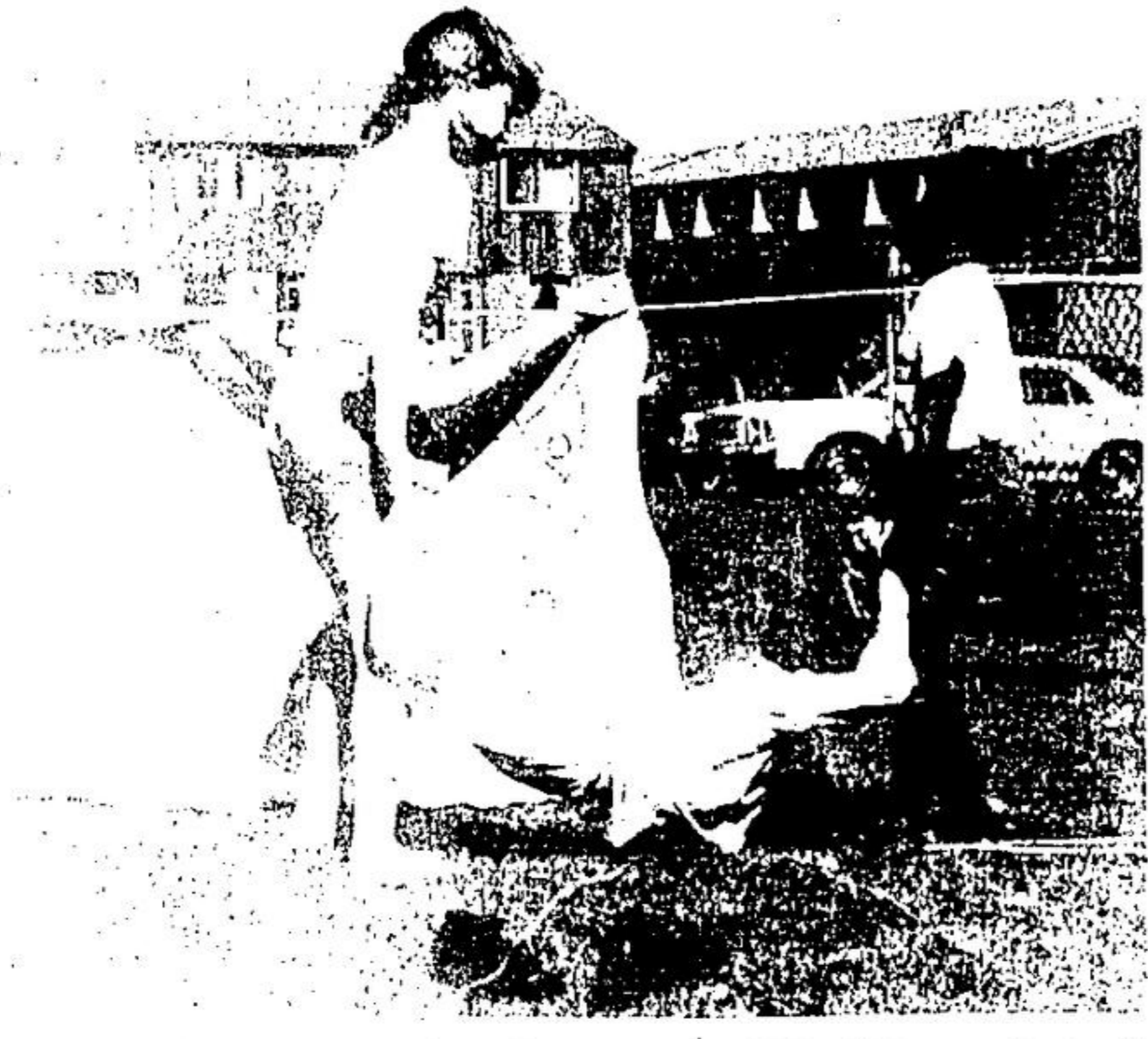


Kids CARE stage circus

Youngsters in the Kingham Hill area have found a way of making their playtime profitable for those less fortunate than themselves. Six children got together Monday and held a circus. Not the ordinary kind with real elephants and lions, but a make-believe circus with skits, and piggy back rides. Admission was charged, with \$3.10 raised for CARE. Lesley Kenny was the

originator of the show with brother Michael, Stephanie Hess and Andrea Shannon helping her out with the acting. Tatjana Jansen and Meridith Caissie were very much appreciated with their help with the makeup and costumes.

Acting in front of neighbors is not new to the group as they have staged puppet shows, a wedding and a palace parade.



LESLEY KENNY and Andrea Shannon carry Michael Kenny off after his hilarious performance as a clown at the Kingham Hill circus staged by the youngsters of that area.

The Ruffian

The Thoroughbred at its finest, perfection in every line, such was this beautiful filly, coal-black, with a pedigree fine and they called her Ruffian.

So many times she finished first with her graceful, flawless stride, both friends and strangers watched alike the brilliant filly, head held with pride and they called her Ruffian.

Now she rests at Belmont, where she has often run, the many records she has set, and races that she won are just memories of that great filly that they called Ruffian.

Jane Williamson

Free Press

Youth page

School's back

Take second thought second look at kids

Special attention should be given to the rules of the road as school resumes at summer's end, cautions the Hamilton Automobile Club. School children are generally dependent on motorists to exercise safe driving habits.

In its annual "School's Open" campaign designed to make drivers especially aware of children making their daily trips to and from local schools, motorists are urged to give second thoughts—and a second look—to the hundreds of school children they will soon encounter.

Watch for children travelling on foot, on bicycles, and boarding or alighting from school buses.

Many youngsters know very little about pedestrian safety rules, and those who do are likely to forget them when in pursuit of a rolling ball or a wind-tossed school paper.

The Hamilton Automobile Club offers these safety reminders for motorists:—When in a school zone, watch for reduced speed limit signs that are installed in many communities.

Remember the school bus law regardless of posted speed limit, traffic in both directions must stop when a chrome-yellow school bus flashes red lights front and rear. At the same time, keep in mind that this rule may condition children to dart in front of a public bus.

Watch for youngsters riding bicycles. They may appear suddenly from a blind spot near the car.

If you are a parent, help your child by mapping out his or her safest walking route to school.

If children ride a school bus, let them walk to the stop. Traffic hazards near schools multiply when children are dropped off and picked up in

family cars. Last year during the first week of school only two students were injured while

travelling to and from school in the Club's territory of Hamilton Wentworth, Halton, Brant and Haldimand

Auto Insurance

RATES INCREASING?

CALL:

ALLSTATE — 824-2350

ALSO LIFE, HOME, BUSINESS

Halton girl champion

The annual C.N.E. Judging Competition was held September 2 at the C.N.E. Fair grounds, Holly Hurren, R.R. No. 2, Campbellville, was Junior Champion Judge and had the highest points score of the competition. Classes included beef, dairy, sheep,

swine, hay and weed and seed identification. Reasons were given on hay, beef, dairy and sheep. Albert Hunter, Burlington was the official judge for the sheep class.

The Halton 4-H Senior Dairy Club represented Halton at the 4-H Demon-

stration Competition. Fifteen counties competed in the day's activities. All competitors received passes to the evening's grandstand show. Special congratulations to Holly for a fine effort and to all the competitors from Halton.



Cartoon of the week



WELCOME SERVICE

If you are new in town or know someone who is

PHONE **853-3902**

DOUBLE HAPPINESS RESTAURANT
CHINESE AND CANADIAN CUISINE
332 Queen St. E., Becher's Place, Acton
Tel. 853-2060

(formerly G & T Fish & Chips)

Give yourself a break
Drop in and see us for the finest Chinese Food and Fish and Chips in Halton Hills

• HOURS •
Mon. - Thurs. 10 a.m. - 8 p.m.
Fri. & Sat. 10 a.m. - 11 p.m. Sunday 12 Noon - 8 p.m.
Tel. 853-2060

ACTON FAIR PARADE ENTRY FORM

SATURDAY, SEPTEMBER 18th
PARADE TO START AT 12:00 NOON

- BUSINESS AND INDUSTRIAL FLOAT
- SERVICE CLUB AND ORGANIZATION FLOAT
- NOVELTY FLOAT

No Entry Fee

Please check the space above for your entry

PRIZES FOR EACH SECTION
1st PRIZE - \$25 2nd PRIZE - \$15 3rd PRIZE - \$10

BEST FLOAT IN PARADE \$25

Mail Entries to: Acton Agricultural Society
Box 59
Acton

ON/OR BEFORE WEDNESDAY, SEPTEMBER 15, 1976

NOTE: Small children with buggies, bicycles, etc. will be on a float from The Acton High School.

ALL ENTRIES MUST BE AT ACTON HIGH SCHOOL BY 11:15 A.M.

NAME OF ORGANIZATION

IT'S THE REEL THING!!

ROD AND REEL REPAIRS
PARTS AVAILABLE FOR MOST MAKES AND MODELS

FISHING TACKLE AT REEL SAVINGS

- We sell BULK LINE—Garcia, Trilene, Stag, Etc. —Bring Your Spools!
- Garcia FISH LOCATER \$115.00.
- Good Line of ARCHERY SUPPLIES
- Spaulnee ROE TYERS, Equipment, Etc.
- New and Used GUNS
- HUNTERS' SUPPLIES

FLETCHER SPORTS
R.R. 2 Acton • 853-1807

Take No. 7 Hwy. East from Acton 1 mile to 4th Line Esquesing, then North 1/8 mile.

Open Evenings to 9 p.m. except Sat. and Sun.

A-B BUDGET BALANCING FOOD BUYS

PRICES EFFECTIVE SEPTEMBER 8, 9, 10, 11

★ **MEAT SPECIALS** ★

Red Brand Beef
BLADE ROAST Bone In **79c** lb.
Boneless
BLADE ROAST **89c** lb.
SHORT RIB ROAST **79c** lb.
CROSS CUT ROAST **89c** lb.
RIB STEAKS **\$1.39** lb.
BRAISING RIBS **69c** lb.
BRISKET PLATE **59c** lb.
Boneless
BRISKET POT ROAST **89c** lb.
Shopsy 4 Pak Pouches
CORNER BEEF **\$1.19**
Shopsy 1 lb. Pkg.
BEEF WIENERS **99c**
Old Mill
PORK SAUSAGE **89c** lb.
Chowder's 1 lb. Pkg. 3 Varieties
SIDE BACON **\$1.89**

We reserve the right to limit quantities.

★ **FRESH PRODUCE** ★

ARRIVES DAILY AT THE
LOWEST POSSIBLE PRICES!!

853-0650 ★ 9 MILL ST. E. — ACTON ★ 853-0650

Jello 3 oz. Pkg. (Save 41c)

ASST'D JELLY POWDERS 5/99c

Javex 26 oz. Pkg. (Save 40c)

FOR UNBLEACHABLES

POWDERED BLEACH 99c

The Tea Pkg. of 120 (Save 66c)

TEA BAGS \$1.69
LIMIT 2 TO A CUSTOMER

Allen's 48 oz. Tins (Save 10c)

APPLE JUICE 59c

White Granulated 2 Kgm Pkg.

SUGAR 79c

Libby's 14 oz. Tins (Save 29c)

RED KIDNEY BEANS 3/\$1.00

Libby's 14 oz. Tin (Save 56c)

SAUCE With MUSHROOMS 4/\$1.00
Or

SAUCE A La KING

Austral 28 oz. Tins (Save 17c)

BARTLETT PEARS 59c

Sealtest 6 oz. Containers (Save 56c)

ASST'D FLAVOURS YOGURT 4/\$1.00

Village 14.1 oz. Pkg. (Save 47c)

SOFT MARGARINE 3/\$1.00

Grand Re-Opening

FRIDAY, SEPTEMBER 10
10:00 A.M.

of

ELISSA SHOES

(FORMERLY ACTON SHOE)

38 Mill St., E. • Acton • 853-1716

Specializing in Footwear for
the ENTIRE FAMILY!!

★ **OPENING SPECIAL** ★

UP TO **50% OFF** OUR ENTIRE STOCK

Plan to drop in for a FREE cup of coffee and home made cookies and view our newly renovated store, also fill out an entry form for a Free draw to take place Saturday at 6 p.m.

• **STORE HOURS** •

Monday to Thursday — 9 a.m. to 6 p.m.
Friday — 9 a.m. to 9 p.m.
Saturday — 9 a.m. to 6 p.m.