

THE HEMSWORTH HOUSE at 25 Sideroad and the Guelph Line was designed to blend with its country setting. Left is the living room built on the open concept with no division between the dining room and the kitchen. Above, the master bedroom has a continuation of the old red brick wall. There are free-standing fireplaces on each side of the wall.

The Acton Free Press.

One Hundred and Second Year—No. 8

ACTON, ONTARIO, WEDNESDAY, AUGUST 25, 1976

Second Section

Silo adorns unique district house

The Hemsworth house at 25 Sideroad and the Guelph Line was designed to blend with its country setting. Not yet two years old, the board and batten structure is already aging with the weather and taking on the barn-like look its planners envisioned. The flat roof is trimmed with cedar-shake shingles.

The last thing Lloyd and Betty Hemsworth wanted was a subdivision home in the country. Their architect, Peter McLaren, furthered the idea by including a silo effect at the side. The silo houses a three-storey stairway with a wrought-iron railing.

The house was designed around the unusual assortment of furniture the Hemsworths have collected over the years. Walls were specifically built to accommodate such pieces as the beautiful big old walnut buffet belonging to Betty's great-grandmother and the old Thomas organ made years ago in Woodstock.

Love the sea
The Hemsworths' love of the sea is reflected throughout the house. Their mahogany hall table comes from a former cruise ship. It's complete with folding top and sides to prevent dishes from sliding off in rough weather.

An old English beer barrel has been cut in half by Lloyd and made into a wine cellar. It sits in the open living-dining room. On the table next to it is a lamp made of a block and tackle with an old powder horn and pistol, reminiscent of pirate days! A fireside bench at the ground level entrance has a needlepoint seat made by Betty and the roses. To light the corner location is a swag lamp made of a ship's lantern with a rope tied to the wall to complete the swag effect.

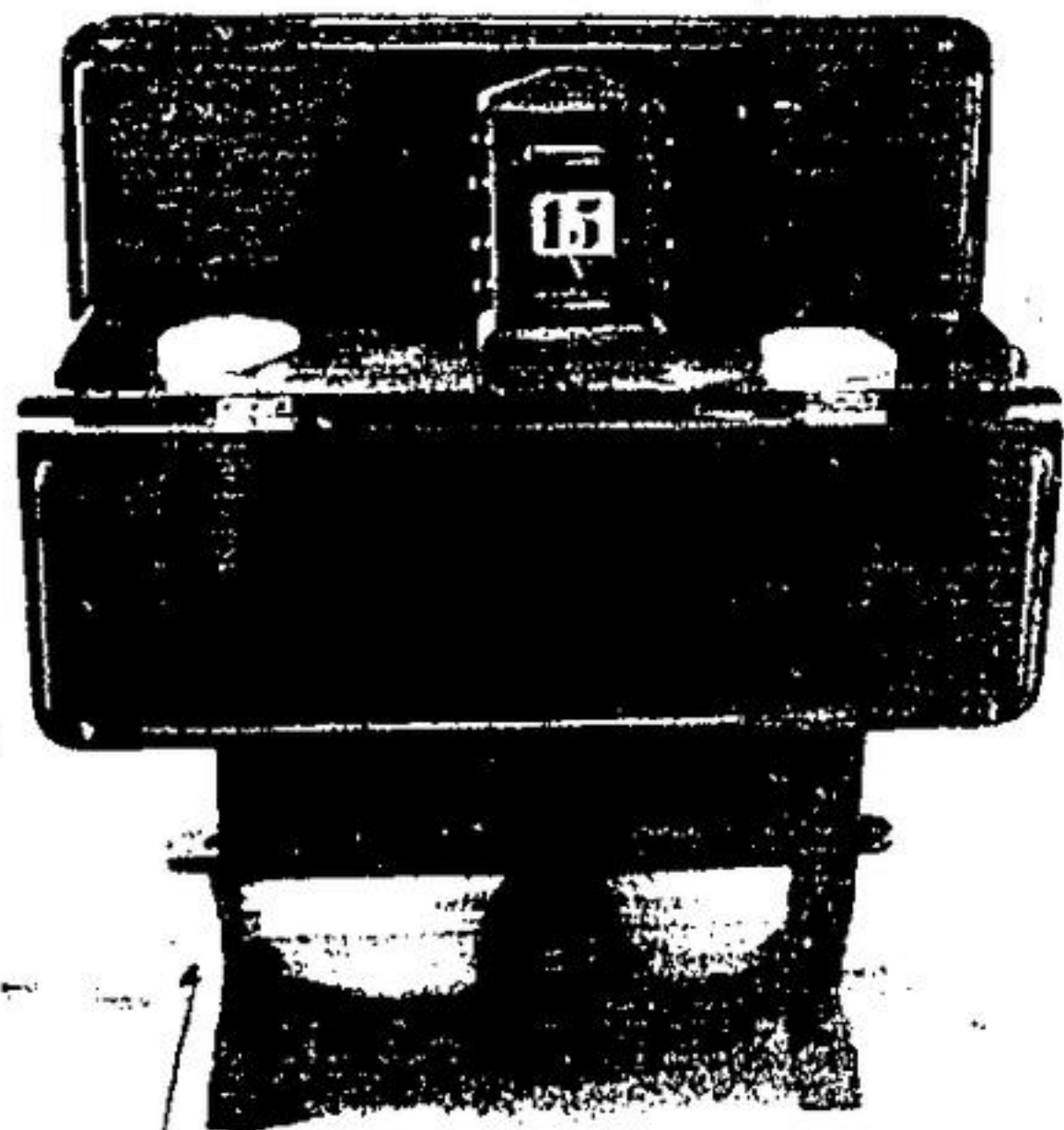
Open concept
Pictures of old sailing ships hang throughout the house. The Hemsworth family enjoyed sailing when the children Tom and Sally were at home. They moved to Milton from Mississauga. Prior to that they made their home in Montreal. This is their first home in a country setting and they've made the most of it.

The house is bright and airy and built on the open concept. The second level living room opens to the outside with sliding doors. Above the doors the third level wall is of tinted glass.

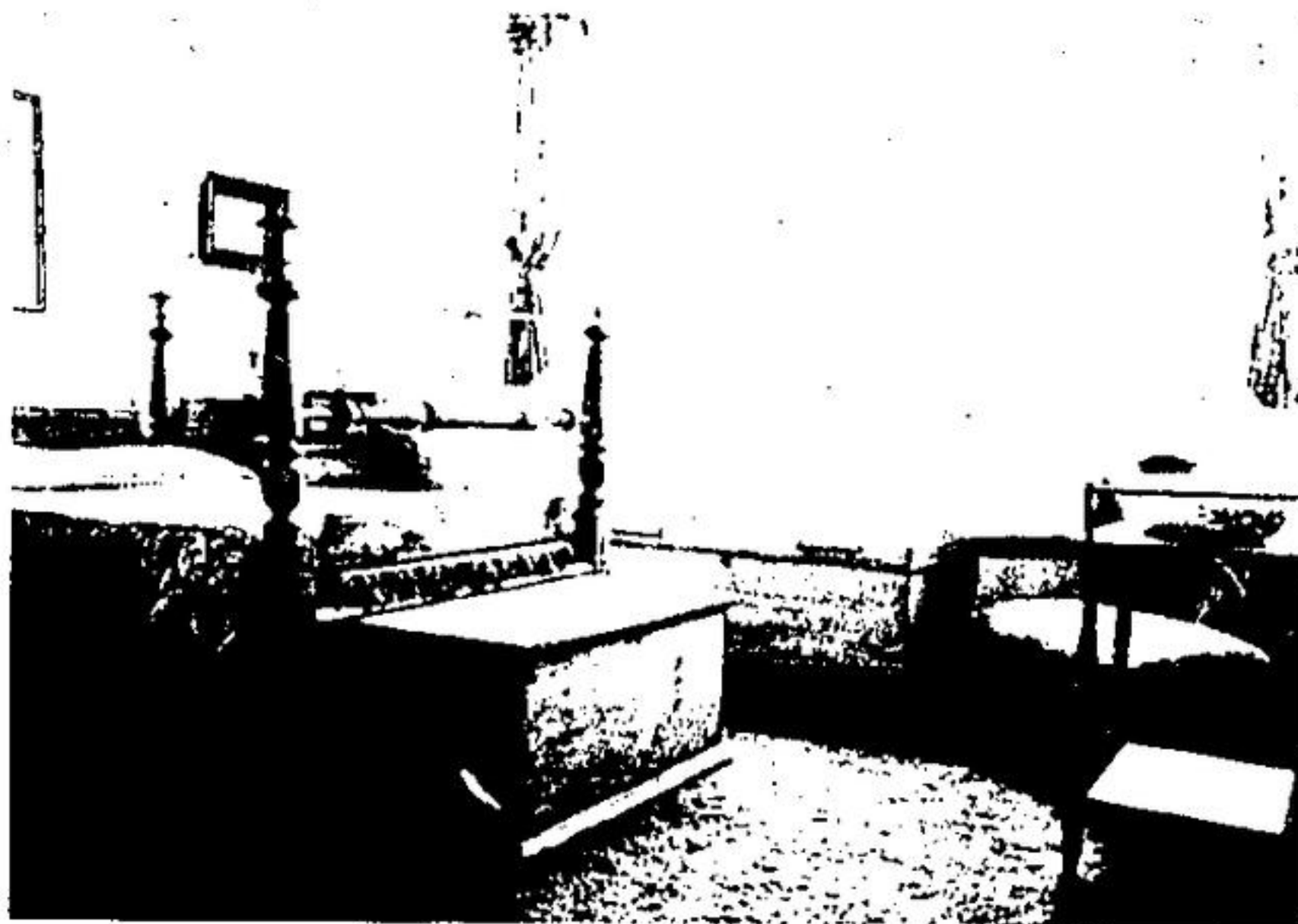
Living room, dining room and kitchen are without barriers. A loft over the kitchen is open to view. It is used by Lloyd and Betty as a den and opens to a roof deck. There's also a deck at second level where a board walk leads to a swimming pool.

Dumb waiter
The ground level front entrance has an unusual feature in the wrought-iron dumb waiter. Designed by Betty, it is used to hoist heavy bags of groceries to the kitchen. This level includes a large entrance foyer, a second bedroom and a laundry and workroom. A sauna and whirlpool are in the process of being installed. The master bedroom shares a brick wall with the living room. On both sides are free-standing fireplaces.

Planters hang on macrame ropes from the open rafters in the living room. The lighting is provided by ceiling inset lights and global bulbs suspended from the third level. The Hemsworths have named their lovely 10-acre retreat Tarnworth. A large pond at the entrance is a haven for wild birds and often while sitting on their deck they see herons and ducks come by for a swim.



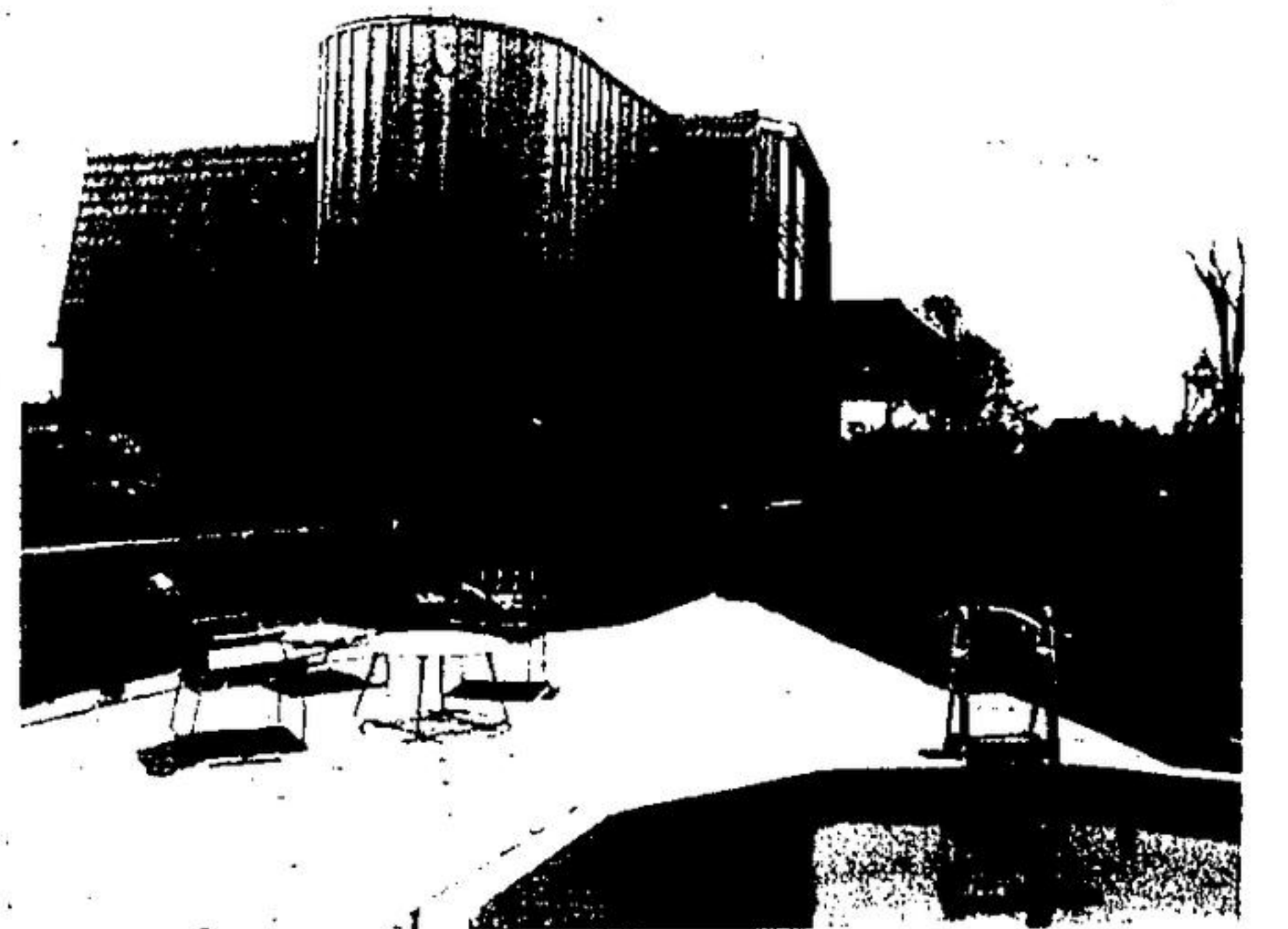
SHIP'S TABLE above and captain's chair and ship's lamp are evidence of the Hemsworths' love of the sea. The sides on the table are to prevent the dishes from falling off in rough weather.



GUEST BEDROOM on the ground floor has beautifully refinished pieces of pine antiques. The room is in red, white and blue.

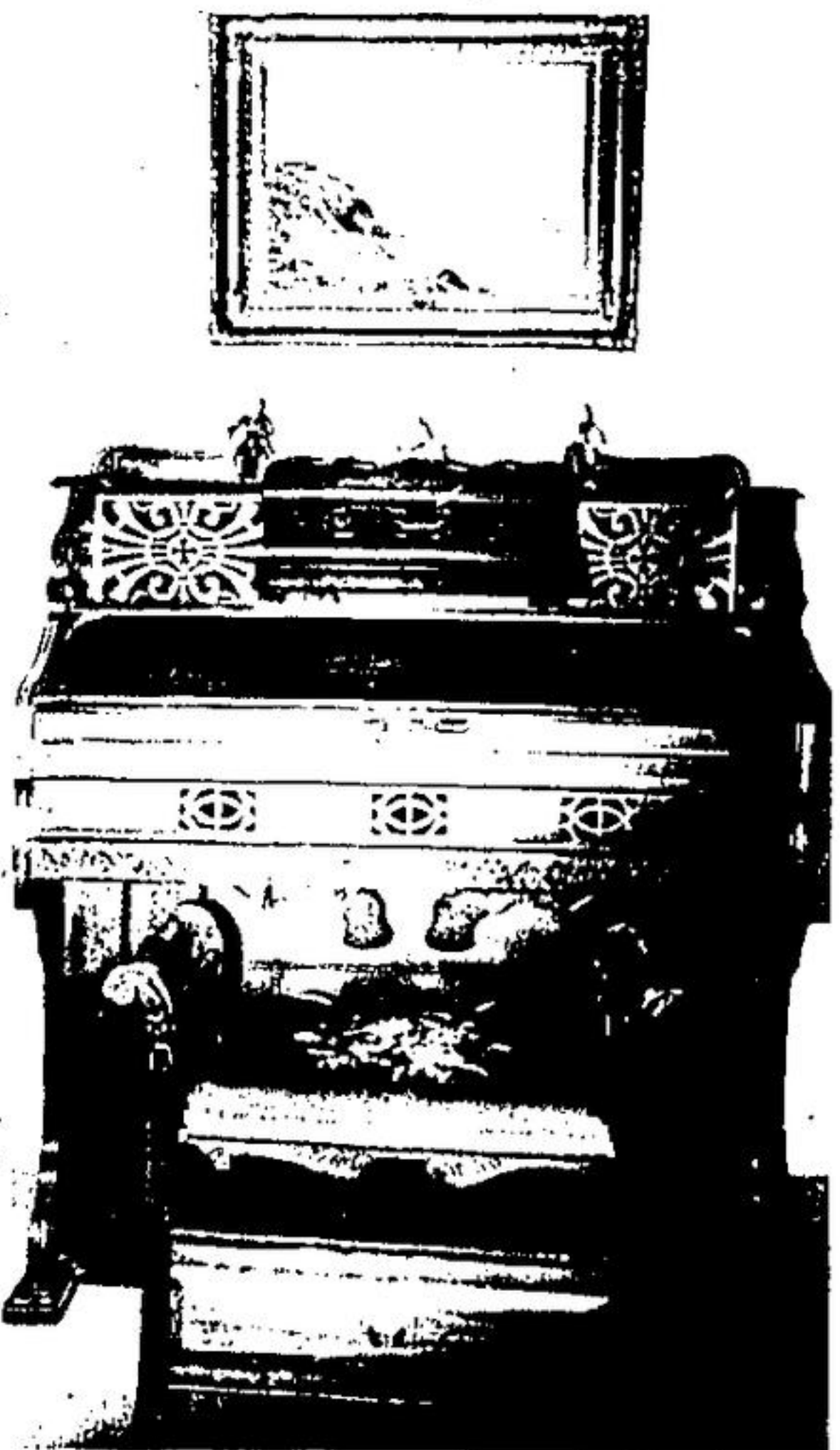
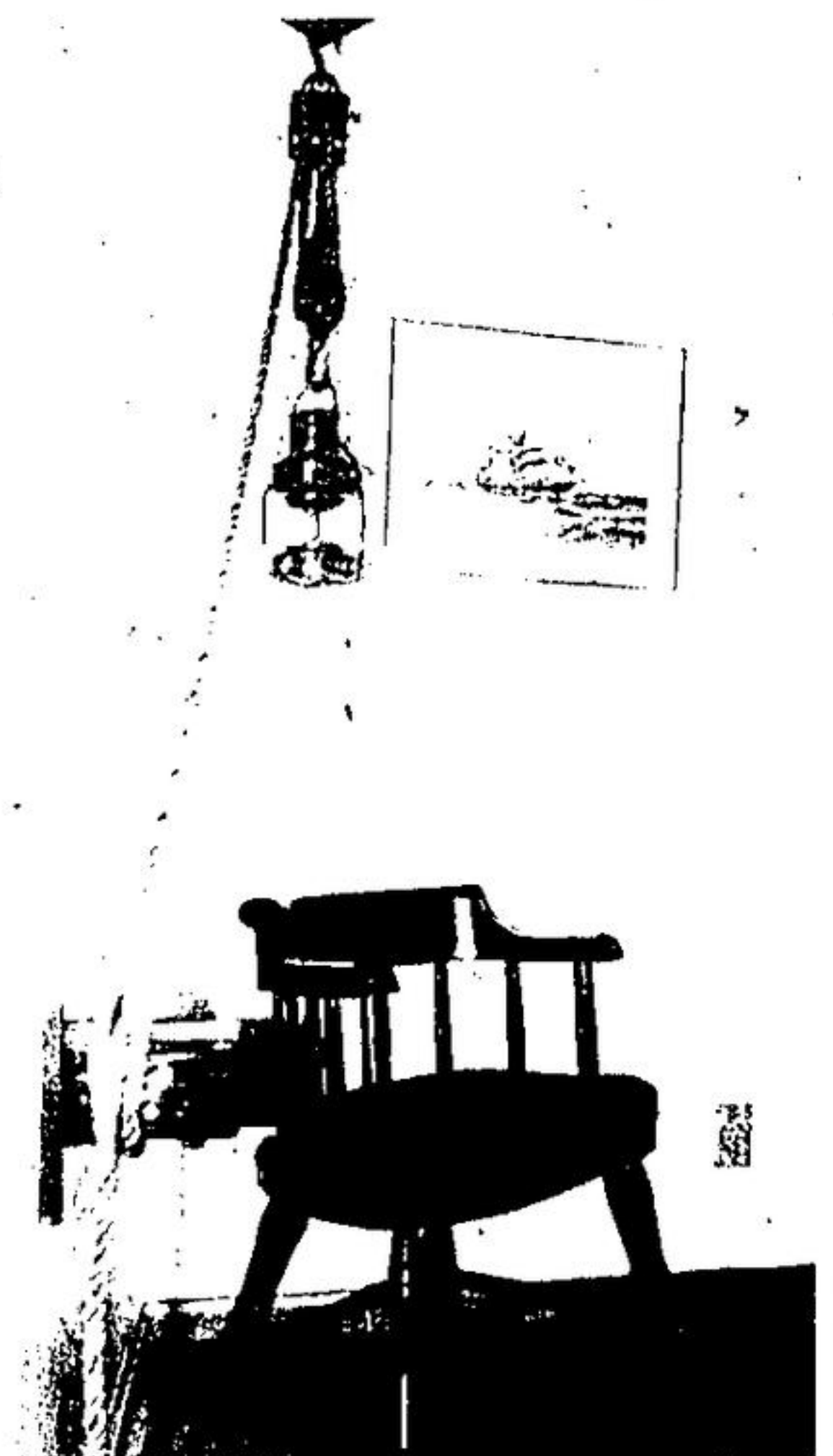


BEER BARREL in the living room was redesigned by Lloyd and now serves as a wine cellar.



District people pass this unique house en route to Campbellville and the Mohawk Raceway.

SILO EFFECT of the Hemsworth house along with the board and batten design of the weathered wood blends the building with the countryside. Above is the deck and swimming pool, below the pond.



ANTIQUE ORGAN was made by the Thomas Organ Co. of Woodstock. It sits in the large front foyer.



DUMB WAITER in the foyer is made of wrought-iron and designed by Betty to hoist heavy groceries to the kitchen above.

