

# Summer playgrounds organize



GETTING READY TO move out on their last introductory lesson on horseback riding is this group of six young riders. From left to right the riders at the Lister Farm are Gail Eastwood, Georgetown; Glenn Gough, Milton; Renata and Laura Brillinger, Jason Sharples and Laura-Ann Leslie, all of Acton.

Leaders and leaders-in-training have now been hired for the 1976 summer playground program.

A few changes have been made from last year, such as the cancellation of the Robert Little school playground. Acton and Esqueing playground supervisor Rick Rocher felt that it would be better to have one large, good program than two small ones. He said the attendance at the school playground was low, giving them good cause to cancel it.

M. Z. Bennett school and Prospect Park playgrounds will be operating as usual this summer.

Limehouse school is having a morning program and Speyside an afternoon playground. Pineview school, Glen Williams school, Ballinad Community and Norval Community Centre will have programs all day.

Special needs Another major change from last year is the integration of the playground for children with special needs (mentally retarded or physically handicapped) into the Prospect Park program. "Specially trained leaders will work with these children, attending to their special needs and adapting the program to their abilities," Mr. Rocher explained.

Georgetown playgrounds will be located at Centennial school, George Kennedy school, Harrison school, Joseph Gibbons school and Park school.

Playgrounds will run from July 5, when youngsters can register at the playground of their choice, to August 13.

Children ages five to 12 years can enjoy arts and crafts, active and quiet games, music and special events. Three trips will also

be made this year, which will be announced at a later date.

The majority of the leaders of this year's playgrounds for Acton and Esqueing have had previous experience. Susan Mellor, Jennifer Rowe, Janet Green, Tineke Vryenhoek, Myrna Snow and Colleen DeBruyn all worked in the playgrounds last summer. Janet Bailey, Greg Norris, Nancy Shorthill and Ellen Barkman are new to the business.

Bev Duval and Nancy South, two Acton girls with experience in playgrounds in town have been hired as leaders for a Georgetown playground.

Leaders-in-training are mostly newcomers with the exception of Karen Glenn, who worked at Limehouse last year. Lynda Shadbolt, Beverley Anderson, Cyndy Anderson and Robert Wingrove are new.

Leader for children with special needs, Lynda Sayers and Teresa Koks, a leader-in-training, both have experience also.

These workers, all students, have been carefully selected by the Halton Hills recreation department and Rick Rocher.

All leaders are being sent on a training program held on June 28 to June 30 at Cedarvale Park in Georgetown. Playground supervisor for Georgetown Marty Walker and Mr. Rocher were at a summer staff training workshop on June 5 at Conestoga College discussing group dynamics and behavioral principles, problem identification and problem solving approaches to discipline and watching video tapes on learning principles.

On June 12 there is a training program for leaders working in special needs programs.

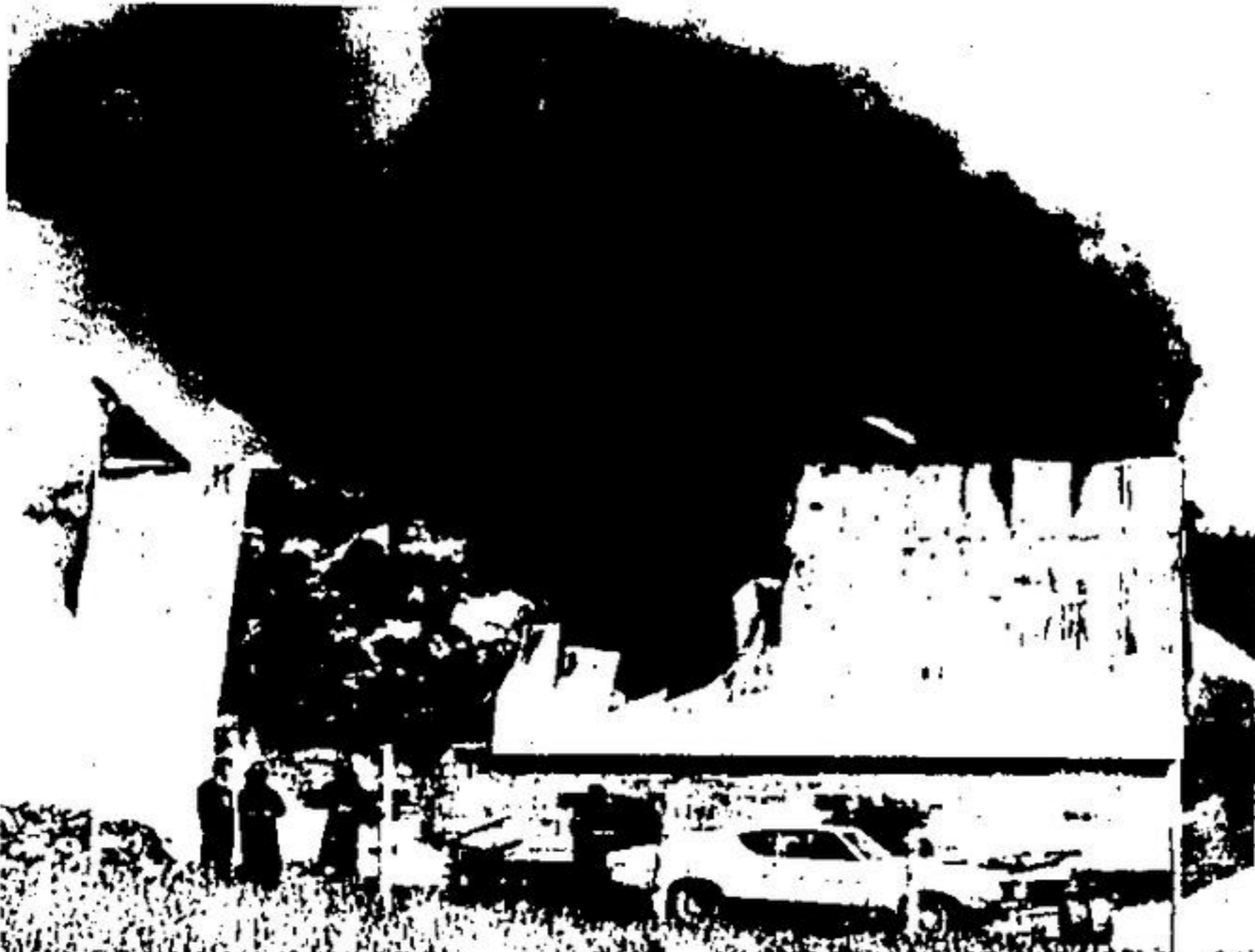
Mr. Rocher is hoping this year will be as successful for the playgrounds as last year. He hopes the changes will be for the better for all concerned.

## DANCING

**Every Saturday**  
**9 p.m. to 1 a.m.**  
at the  
**Acton Legion**

JUNE 12 - THE SHAYNES  
19 Country D's  
26 The Wheels  
Admission: \$4.00 per couple  
ENTERTAINMENT IN LOUNGE EVERY FRIDAY  
NIGHT 9 P.M. - 1 A.M.

PLEASE NOTE: There will be NO Saturday Night Dancing, or Friday Night Entertainment during the months of July and August.



FIREFIGHTERS FROM Milton, Acton and Rockwood work to douse flames at a barn fire Monday afternoon. The barn, filled with hay and grain, was located on Sideroad 30, just west of the Guelph Line. Firefighters had to transport water to the blaze.

## Four displays tour Halton

Portable displays dealing with Halton region's official plan will visit Georgetown, Acton, and Milton libraries and the Campbellville Lions Community Centre and stay for two weeks as part of the public participation process.

At a meeting of Halton planning committee last Wednesday at Halton Hills municipal building, it was decided to increase the number of portable displays from two to four and also keep them in each of the 21 display locations around the region for two weeks instead of just three days.

Each cubed display will cover 20 square feet of floor space and cost \$275 to build. Councillor Ric Morrow said a three day stay in each location was too short to get the

kind of high impact response from the public the committee is looking for and urged a two week stay at each library and community centre.

Morrow suggested the region should follow Ottawa and Queen's Park's lead and place the displays in banks since if they were only placed in libraries a large sector of the population would never see it.

He was told by a staff member the text and contents of the displays wouldn't come to the committee for another three or four months and that the libraries agreed with him that three days was too short a time. A week would be much better.

### G.H. WARD AND PARTNERS

**Chartered Accountants**

ANNOUNCE

The opening of their office  
at  
**20 MILL ST. EAST - ACTON**  
**853-2820**

### Separate school

The separate school board property and finance committee decided last week the board will start negotiations this month with the Halton Board of Education to share facilities. The committee learned Acton ratepayers had approved the move.

Trustee Harry McDermott reported he is impressed by the proposed site. "The location is fantastic, the site is beautiful, the setting is fabulous."

Director of Education Cliff Byrnes suggested to the committee that negotiations start in the fall. He was overruled by the committee. "We want to make them aware we're serious about this," said committee chairman John Visser.



ACTON FIRE CHIEF Mick Holmes (in shirt sleeves) directs firefighters during Monday's barn fire on Sideroad 30, just west of the Guelph Line. The barn belongs to Donald James Hepburn.

**Attention**  
**HOBBYISTS**  
**& CRAFTSMEN**  
**GROUPS OR INDIVIDUALS**

SPACE is available for CRAFT, NOVELTY, FUDGE, HONEY, GARDEN PRODUCTS, CANDY APPLES, PRESERVES, BAKED GOODS, etc.

Concessions — mobile lunch units — exhibitors welcome.

**on JULY 17 & 18**  
**ERIN FOUNDERS' DAY**  
**CELEBRATIONS**

ERIN AGRICULTURAL FAIR GROUNDS  
Call 833-2641 or write Box 437  
Erin, Ont.  
for further information

**HALTON HILLS FURNITURE'S**

## Weekly Special

**7 Piece  
DINING ROOM SUITE**

# \$899<sup>00</sup>

**HALTON HILLS FURNITURE and APPLIANCES**  
352 Queen St. E. • Hwy. No. 7 • Acton • 853-0211

Continuing with ...

## "Our Personalized Service"

WE ARE PLEASED TO  
INTRODUCE AN ADDITIONAL  
SERVICE ...

### APPLICATION of MAKE-UP

BY APPOINTMENT ONLY

TELEPHONE **853-3910** TELEPHONE

MARILYN'S  
*Village Boutique*  
124 MILL ST. E. • ACTON  
*"Fashion at its best for the total woman"*

**Summer Sandals**  
BY  
**NATURALIZER**

Sizes 5 to 11  
Widths 2A to D

**\$25<sup>95</sup>**  
TO  
**\$30<sup>00</sup>**

**Swetman's SHOES**  
Downtown Acton  
853-0360

## GLIDDEN PAINT SPECIALS

*for inside... outside...  
all around your house!*

We'll show you specialized customer service! We're always ready to hand you a decorating hint or custom tint great SPRED® paints to suit your color requirements. Stop in soon and see what we can do for you and your house!

**spred satin**  
LOTEX WALL PAINT

Tops in features painters want most!

**\$11<sup>55</sup>**  
GAL.

- Soft, rich looking finish
- Washable, spot scrubbable
- Dries in 20 minutes
- Huge color selection

**fast & easy**  
EXTERIOR  
WHITE

Fine Quality Interior/Exterior Latex

**\$5<sup>99</sup>**  
Gal.

**spred lustre**

New! Soil Resistant Lo-Lustre Finish.

**\$14<sup>70</sup>**  
GAL. †

- Truly scrubable
- May be washed repeatedly
- Soft beauty for all interior paintable surface

**PROTECTIVE WOOD STAIN**

• Rustic Brown  
• Redwood

**\$6<sup>99</sup>**  
GAL.

**fast & easy**

Fine quality exterior Alkyd House Paint

**\$8<sup>99</sup>**  
GAL.

**spred Gel-Flo**

The house paint that does what it says

**\$14<sup>85</sup>**  
GAL. †

- Beautiful, porcelain-like gloss
- Does not run or sag
- Easy application thick or thin
- Hides hairline cracks

**spred house paint**

The house paint that does what it says

**\$14<sup>30</sup>**  
GAL. †

- Durable, flat finish
- Resists punishing weather
- Keeps its looks for years
- Flows on like a breeze

**ENDURANCE HOUSE PAINT**

endurance house paint exterior alkyd

**\$14<sup>60</sup>**  
GAL.

† Trademark of Glidden Company. \* May be underfilled for tinting—see label for net content.

## Lakeview Centre

**CARPET and FLOORING SPECIALISTS**  
126 MAIN ST., N. • ACTON • 853-1190