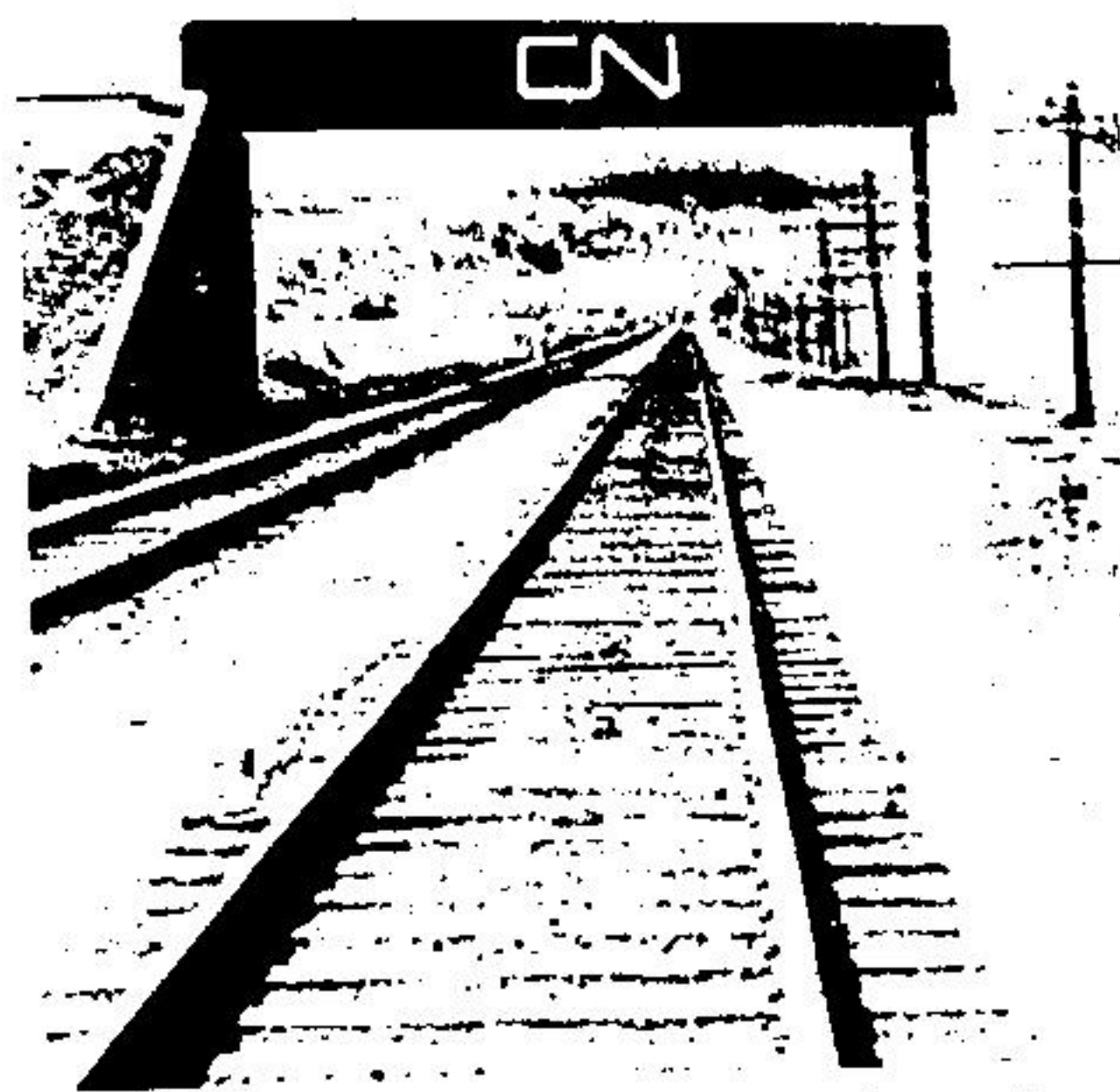




SMALL WOODEN bridges, like this one, near Campbellville allowed farm animals to cross to another field.



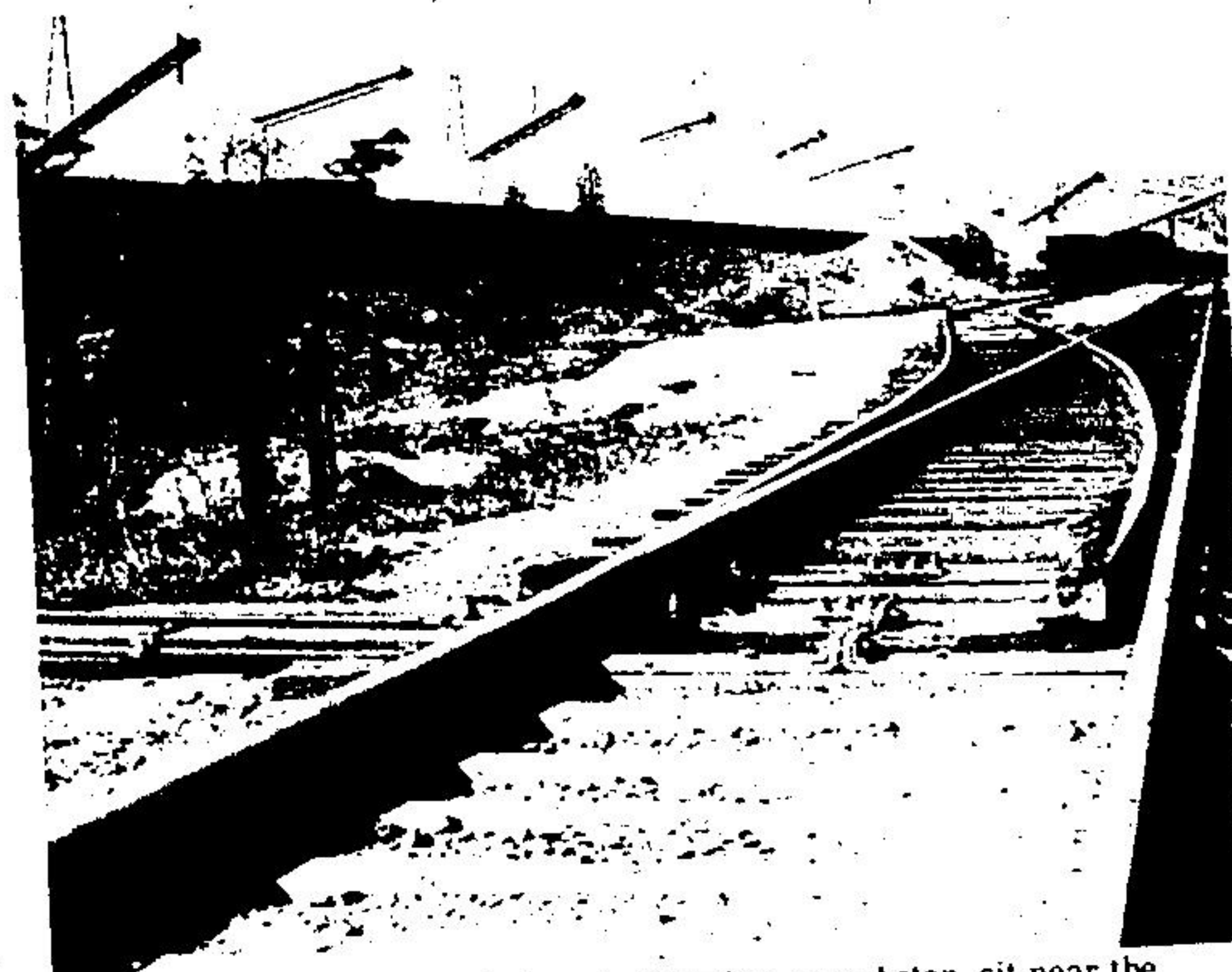
THE CNR line from Georgetown to Hamilton crosses the CPR on the west side of Milton.



THE OLD CPR station in Milton is now rented out to a rubber sealant firm.



FREIGHT trains, hauled by diesels barrel across the CPR line, which pass through Milton, but seldom stop now.



PILES OF crushed stone at Indusmin Quarries, near Acton, sit near the Fourth Line CNR crossing.



THE CNR station at Georgetown is the only one in the three towns, which remains open. Most of the passengers take the GO commuter train to Toronto.



A STEEL bridge at Limehouse links the Fifth Line and 22 Sideroad.

y  
Gibbons