



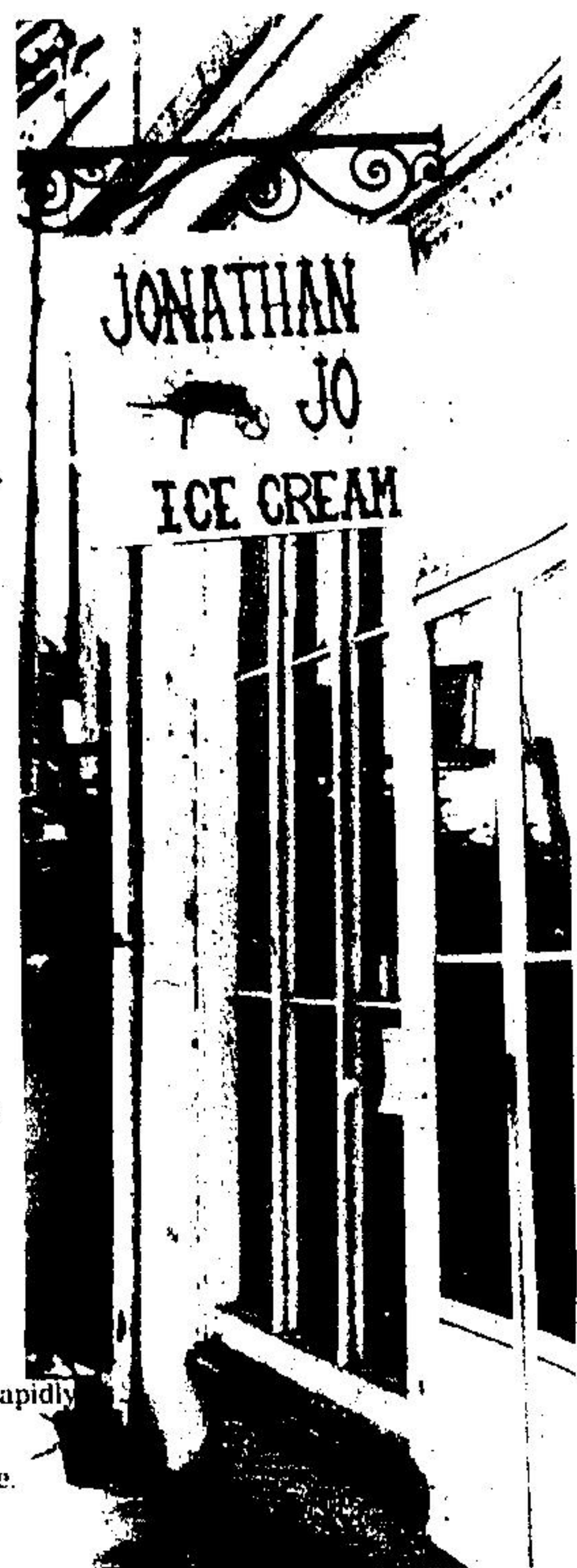
# Elora

Elora is one of the few settlements within a few miles which has preserved much of its past which is attracting attention from thousands each year. It is a quiet typical Ontario community centered around the Elora Gorge. The gorge, formed by the confluence of the Grand and the Irvine, a smaller river, has always been an attraction. The lofty rock walls of the gorge are formed of magnesium limestone which through the action of the rivers has created a rugged work of natural art. The village with its quaint shady streets is renovating its old buildings and capturing a page of Ontario history which is rapidly

settled in 1822, was named after the caves of Elora. The village, founded by William Gilkison who saw a resemblance to the village of Elora in the village of Elora will introduce you to much of Ontario history and fall colors as well as a helping of nostalgia.



THE IRVINE RIVER'S confluence with the Grand River takes place in Elora Gorge. Both rivers are carved into a bed from chalky limestone rock that breaks into precipitous cliffs.



A TYPICAL STORE front which once housed the Wellington County museum. Inside is a replica of an early ice cream parlor with benches and little else to furnish the building.



THIS ISLET CARVED by the Grand River before plunging into more placid waters is the symbol of the village of Elora.



STORE FRONTS, once crumbling and rotting at the Grand River's edge, have been restored in Elora, creating a little bit of Old Ontario, and creating a mecca for shoppers who look for unusual items, often hand made, a few yards up the street the village also has modern stores and places of business creating a blend of old and new cultures.

Photos and text  
by Hartley Coles

How to get there



REFLECTION AT THE BACK of old store fronts along with Grand River in the heart of the village, add a unique feature in Elora which renovations to the old section of the river settlement compliments.



BUSLOADS OF TOURISTS continually tour through Elora taking in sights of interest such as this house being decorated in Pennsylvania Dutch fashion.



A MENNONITE'S HORSE hitched to a tree is not an uncommon sight in the village. Settlers of the Amish faith live in considerable numbers around Elora and add another "old world" dimension to the village.