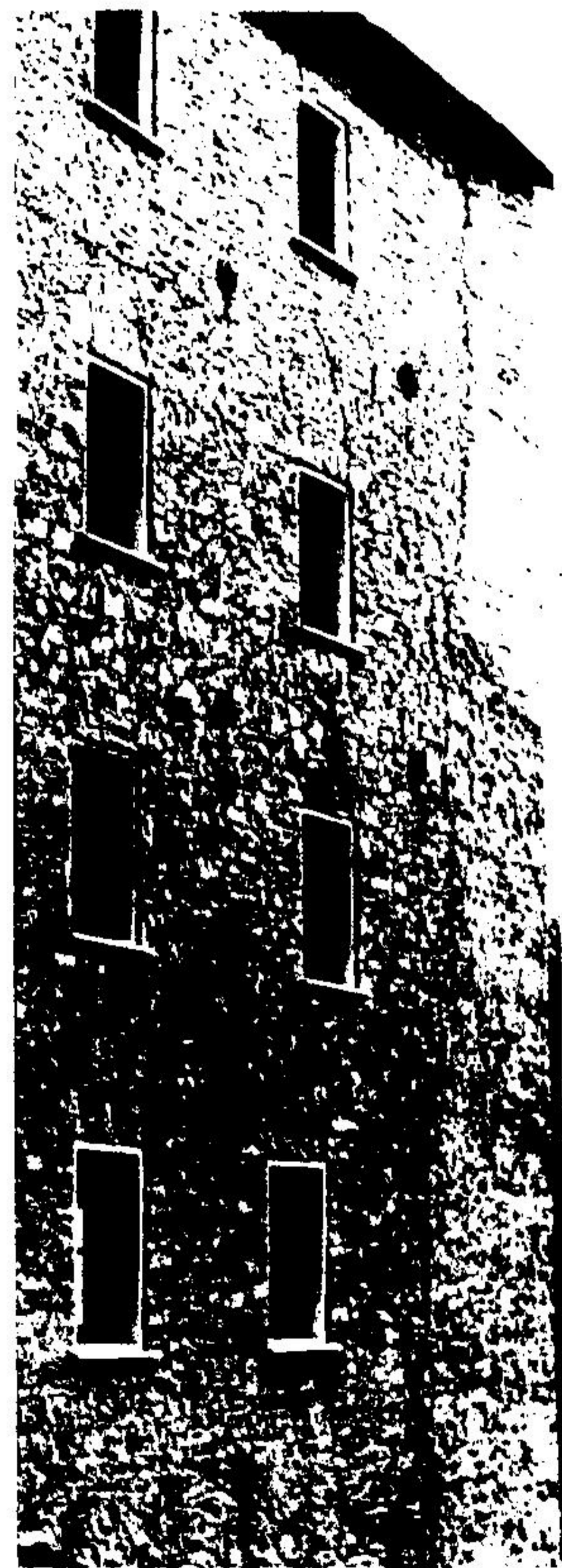


EVER SEEN a classic liquor store like this one? Government and village planners wisely used one of the old stone buildings in Elora for the store which blends in with the decor of the older part of the village.

elora

The village of Elora is one of the few settlements within a few miles of this area which has preserved much of its past in a fashion which is attracting attention from thousands of visitors each year. It is a quiet typical Ontario community mainly centred around the Elora Gorge. The gorge, formed by the Grand River and its confluence with the Irvine, a smaller tributary, has always been an attraction. The lofty rock walls of the ravines are formed of magnesium limestone which through the action of the rivers has created a rugged work of natural art. Now the village with its quaint shady streets is renovating its old stone buildings and capturing a page of Ontario history which is rapidly disappearing.

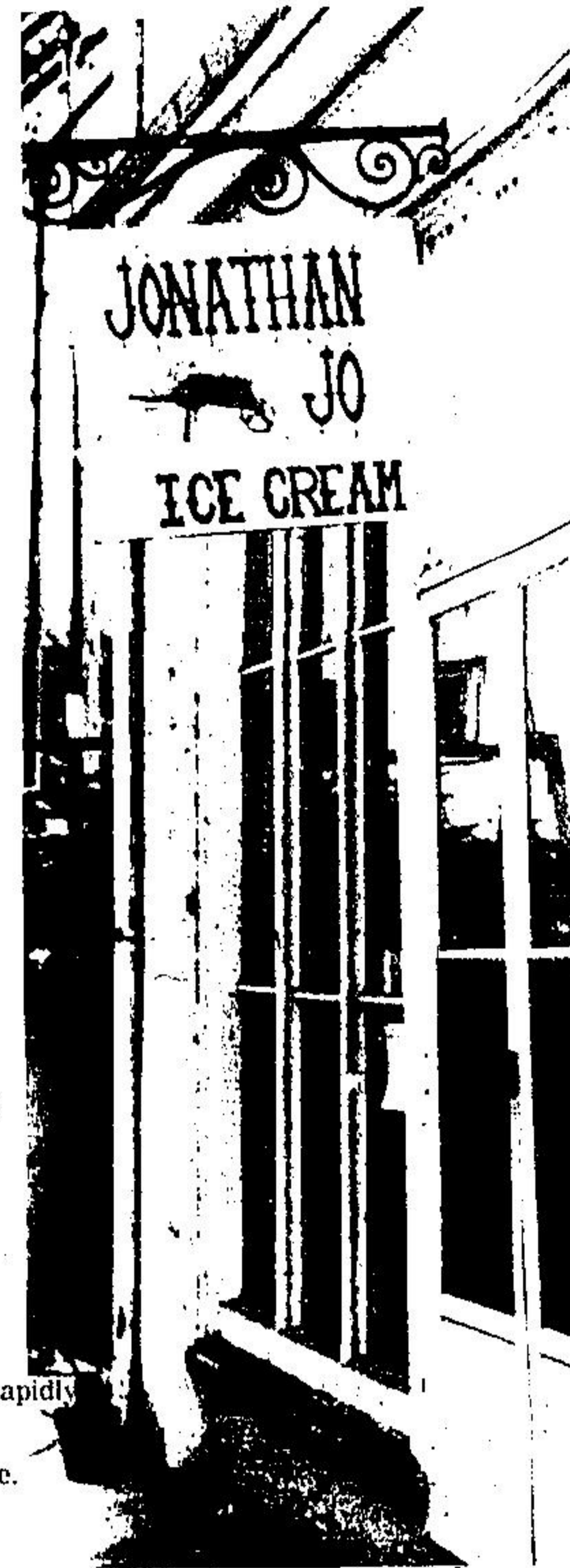
Elora, first settled in 1822, was named after the caves of Elora in East India, by founder William Gilkinson who saw a resemblance. A Sunday drive to the village will introduce you to much natural beauty and fall colors as well as a helping of nostalgia.



THE OLD STONE GRIST mill in the heart of Elora is being restored for another purpose and masons and contractors are busy at its scenic location above the falls.



THE IRVINE RIVER'S confluence with the Grand takes place in Elora Gorge. Both rivers carved a bed from chalky limestone rock that have worn into precipitous cliffs.



A TYPICAL STORE front which once housed the Wellington County museum. Inside is a replica of an early ice cream parlor with benches and little else to furnish the building.



THIS ISLET CARVED by the Grand River before plunging into more placid waters is the symbol the village of Elora



STORE FRONTS, once crumpled the Grand River's edge, have Elora, creating a little bit of creating a mecca for shoppers usual items, often hand made, a street the village also has m places of business creating a new cultures.

Photos and text
by Hartley Coles

How to get there



REFLECTION AT THE BACK of old store fronts along with Grand River in the heart of the village, add a unique feature in Elora which renovations to the old section of the river settlement compliments.