

News Digest

Water for town office in 1976

It was revealed at Monday's Halton Hills works committee meeting that Halton region plans to extend the water main from Maple Avenue to the town's Seventh Line administration building next year.

Engineer Robert Austin said the region has budgeted \$80,000 for the project in 1976 and that the work will be done by tender. If the lowest tender is less than \$50,000 then Halton Hills will be billed for the tender amount.

Councillor Ern Hyde pointed out the cost is too high and that town estimates indicate the job could be done for considerably less than the region thinks and said it was regrettable the town can't do the job themselves.

Town to take over cemetery

Once the deed for the United Presbyterian Cemetery, Lot 6, Concession 2, is turned over to the town Halton Hills will take over the burial grounds.

Engineer Robert Austin told Halton Hills works committee Monday that the cemetery is on the verge of being abandoned and that the town will have to take it over and maintain it.

It will be up to the province to determine who owns the cemetery and deed it over to the town.

School bus loading zones

The town is going to set up a special meeting between Halton Hills works committee, police representatives and Halton Board of Education officials to see if there is any need in the town for special school bus loading zones to be designated.

Councillor Joe Hurst noted that the problems with school bus loading zones had already been worked out in Acton before school opened and that the school board had agreed with everything the town had done. In the case of Acton, Hurst noted the town had installed old stop signs to designate the bus loading zones.

At the same meeting Councillor Ern Hyde suggested the town talk to the school board about specifying where a bus can stop.

He said there are many examples of spots where the buses stop when they hold up traffic.

Hyde said Ewing Street in Georgetown was a good example of the problems caused by buses stopping too close to a corner. He explained the bus turns the corner onto Ewing Street, stops, and traffic turning right is lined up onto Main Street because it can't pass the bus on Ewing Street.

The committee agreed this problem should be brought up with the school board.

Sign isn't legal

There is no such thing as a "Stop for Children" sign so Halton Hills works committee decided Monday they can't comply with a resident's request.

Mrs. P. Linstead, R.R. 1, Limehouse, sent a letter to the town asking that a "Stop for Children" be erected on the Sixth Line north of Highway 7.

The town decided the sign Mrs. Linstead requested has no legal status.

Town gathering evidence

Engineer Robert Austin was instructed Monday to come up with a list of examples where regional supervision of water and sewer service has been costly and inefficient.

A Halton Hills resolution requesting the province to return jurisdiction over water and sewer service to the area municipalities received support from Milton only and was rejected by Oakville and Burlington.

Halton Hills works committee decided Monday they might have a better chance of getting support from all municipalities in Halton if they had some strong evidence that the region is wasting money and causing costly delays in water and sewer service.

Ern Hyde suggested that if south Halton won't support the town's concerns then maybe the province would go along with special status for North Halton since this area is being hurt most by the poor way the region is handling water and sewers.

Maltby joins works committee

New Halton Hills councillor George Maltby took part in his first official meeting Monday.

Maltby, who was named by council to replace the late Councillor Len Cove, joined Halton Hills works committee Monday and took an active part in the meeting.

Maltby is the ward two representative on the works committee.

Corn Cob Capers

It's the time of the year for corn roasts and the Mount-berg Wildlife Centre is the perfect setting for a fall outing. Located on the Town Line three miles west of Campbellville, the conservation area is operated by Halton Region Conservation Authority.

Visitors from Sept. 6 to Oct. 26 will be treated to a horse drawn wagon ride through

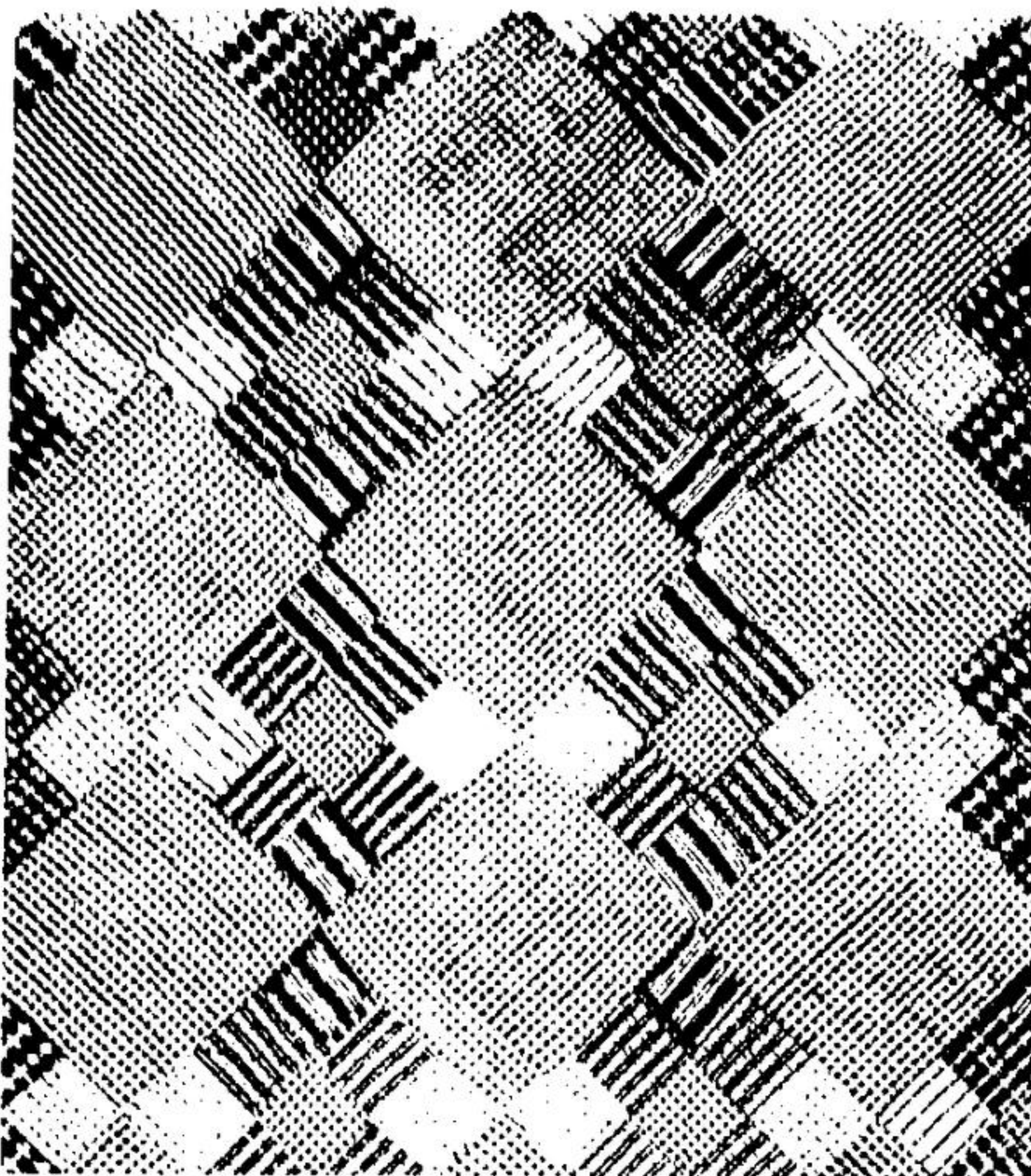
acres of beautiful changing leaves. It's called Corn Cob Capers, with hot buttered corn on the cob cooked in a big kettle and served for 25 cents a cob.

The centre is open every Saturday and Sunday from 10 a.m. to 5 p.m. Cost of the program, which includes films and slide talks and displays of farm and wild animals, is just \$2 per car.

INTERNATIONAL CANADIAN & WORLD Plowing Match & FARM MACHINERY SHOW
Region of Durham at OSHAWA

- COLORFUL BANDS & PARADES
- LADIES PROGRAM
- OVER 300 EXHIBITS
- SOMETHING FOR EVERYONE

SEPT. 23, 24, 25, 26, 27, 1975



PATCHED QUILT made in Acton between 1850 and 1875 is on display in the current quilt exhibit at the Royal Ontario Museum in Toronto. Name of the woman who made the quilt is not known. It uses up scraps of old handmade material with reds predominating.

Museum quilt display includes Acton antique

A quilt made near Acton between 1850 and 1875 is on display in the current exhibition of 19th century quilts at the Royal Ontario Museum. It's also pictured in the booklet Picked Quilts of Ontario by museum curator Dorothy Burnham, which can be purchased at the museum in Toronto.

The old quilt is the gift to the museum of Mrs. Keith Comfort of Beamsville, who incidentally is married to a

cousin of Eldon Comfort of R.R. 4. Collecting antiques is Mrs. Comfort's hobby.

The quilt in the display is one of the simplest and most basic patterns, called the Nine Patch. It consists, Mrs. Burnham explains, of three rows of three small squares alternating with a plain block. The blocks can be of any size in this design.

This quilt is entirely made of handspun and handwoven materials.

"Its main color," Ms.

Burnham writes, "a bright red, makes it an unusually cheerful example of the basic winter quilt. Many battered remnants of this type survive, but few are in good condition."

"They are a valuable source of information on the range and type of locally handwoven materials used for pioneer clothing. When garments wore out they were turned and used again, then later cut down and remade for children's clothes; eventually the pieces that still had wear in them finished their life of usefulness on these heavy quilts. This one is backed with plain handwoven material and has wool padding and just enough quilting to hold the two layers together."

The display of quilts remains at the museum until Sept. 30.

Ms. Burnham's book on quilts is a catalogue to the exhibit but is also a do-it-yourself guide for quilters since it shows details of how to produce the patterns.

Although the name of the Acton woman who made the quilt is not known, she was obviously both artistic as well as resourceful. She used the small scraps of material available to create a beautiful and warm bed covering. These rural women, Mr. Burnham comments "were living on the edge of nothing."

New minister for Christian Fellowship

The Baptist Christian Fellowship Church meeting in the George Kennedy School in Georgetown welcomed to their pulpit new minister, the Rev. Das Sydney on Sunday, September 7. This is the first year that the church has had a full-time minister. Other pastors served on an interim basis.



Rev. Sydney was born in India, took his Elementary Education in Ethiopia, East Africa and then continued his schooling, including one year University in Ghana, West Africa. After this Rev. Sydney came to Toronto completing his under-graduate work and then receiving his B.Sc. from the University of Toronto. He attended McMaster University, Hamilton, where he obtained his B.D. degree in the spring of this year.

HOST Rent-A-Car

336 Guelph St., Georgetown—877-6111

T.V. TOWER HIT BY LIGHTNING

Lightning struck the television tower on a home on Hyland Avenue, Thursday afternoon, damaging the tower and the eavestroughing.

HALTON CABLE SYSTEMS LTD.
37 MAIN STREET SOUTH
HALTON HILLS (GEORGETOWN) 853-3870

Homes hard to find Service appeals to Nass. residents

Ambulance attendants are having serious problems locating specific farms or houses located north of Steeles Ave. in the Town of Milton.

And the District of Halton and Mississauga Ambulance Service last week appealed for co-operation from residents of that area so this "extremely important" matter may be solved.

Al Duffin, district supervisor, said in an interview there is no numbering system for farms or houses north of Steeles, and most residents have their names on mail boxes instead.

Name problem But there are no names on some mailboxes, he said, while others just have the name on one side. If the mailman usually comes from the north to make deliveries, then the names is on the north side of the box.

Duffin said an ambulance

attendee driving northward under those conditions has to slow down and look back to read the name on every mailbox, and previous time is lost.

The ambulance service has asked all residents in the Nanawaga area to print

their names prominently on give specific instructions both sides of mailboxes, and when calling an ambulance.

Choose It
from Canada's largest rental fleet of GM cars and GMC trucks.

Charge It
1 day, 1 month, 1 year, credit cards.

TILDEN ANDREW MURRAY MOTORS
15 Mountainview Road N.
877-4944
GEORGETOWN

ACTON HIGH SCHOOL

OPENING PARENTS' NIGHT

WEDNESDAY, SEPT. 17
7:30 P.M.

All parents are invited to come over to the school to meet the teachers and Dean Fink, the new principal. There will be a presentation of the school's program in the gym followed by coffee and conversation in the cafeteria. We hope you will take this chance to get answers to your questions about the school and its program.

GUELPH KINSMEN

BONUS BINGO
WEEKLY

Wednesday, September 17th — 7:55 p.m.
Guelph Curling Club

FINAL SUPER NIGHT

4 SPECIALS INCLUDING ONE GAME FOR A
CAR or \$2,000 CASH (MUST GO)

"Don't Miss This One!" The Bingo of '75
— PRIZE NIGHT —

Commencing Sept. 24 at PARADISE GARDENS for Winter Months

FREE BUS - CALL TYLER TRANSPORTATION

YOU, TOO, CAN BECOME A BUILDALL

HANDY WOMAN

Although the name of the Acton woman who made the quilt is not known, she was obviously both artistic as well as resourceful. She used the small scraps of material available to create a beautiful and warm bed covering. These rural women, Mr. Burnham comments "were living on the edge of nothing."

PAINT

Paint up with Top Quality Buildall Paints. Over 750 custom mixed colors to choose from.

FLAT LATEX \$8⁴⁵ Gal.
SEMI GLOSS \$12⁴⁵ Gal.
SEMI-GLOSS LATEX \$12⁸⁵ Gal.

CARPET SPECIALS

FLAT RAISER LEVEL LOOP CARPET Multi-colored, foam backed, 100% nylon, 12' wide.

4 Colors \$4⁹⁵ Sq. Yd.

WALL PANELS

Wellwood Wood Grain Overlay Panel

Exact reproduction of original woods

4' x 8' Sheet

\$6⁷⁹ Each

Reg. Price 7.69 ea.

PRE-FINISHED MOULDING

Cellular Vinyl Mouldings, wood grained match your panels easily. Cut & nailed, no painting is necessary.

7' Door & Window Trim \$1⁶⁵ Ea.
8' Baseboard Trim \$2¹⁵ Ea.

MACKENZIE BUILDALL
ASSOCIATE STORE

CHARGE X USE YOUR CHARGE X FREE DELIVERY

Georgetown — 8 James St. Phone 877-2207
Mon.-Wed. 8-6
Thurs.-Fri. 8 a.m.-9 p.m.-Sat. 8-5
Acton — 12 Church St. Phone 853-1860
Mon.-Thurs. 8 a.m.-6 p.m.
Fri. 8 a.m.-9 p.m.
Sat. 8-5