



ONT.

Here's what summer is all about:

Ontario Place. Breath-taking, award-winning architecture, shining water, sky, and grassy slopes. Ninety-six acres of fun and leisure... an oasis of three man-made islands on the waterfront, in the heart of Toronto, North America's most exciting city. The laughter of Children's Village, a very special do-it-yourself playland. The excitement of the Forum, with the best in live entertainment. The wonder of Cinesphere, a domed theatre housing the world's largest movie screen. The dazzle of multi-media theatres. And miniature golf. Over twenty restaurants, lounges, snack spots.

Boutiques. Parkland. Picnic spots. (Children's Village and most attractions included in the price of admission!) All yours, all summer, at your place on the lake. Ontario Place.

Cinesphere

Movies six stories high, inside a twinkling dome—a glittering Toronto landmark, with seating for 800 people. IMAX films on a curving screen almost lift you out of your seat. It's the world's largest, most exciting motion picture experience—totally new, totally unique.

The Forum

The best in live entertainment from all over the world in an open-air amphitheatre by the water. Rock, jazz, pop, variety shows, symphony and ballet, light up summer nights. Covered seating for 2,000 people, room for 6,000 more on the grassy slopes.



D PLACE.

ontario place

live entertainment, to snack and dairy bars. The fabulous SunSkate, rooftop "ice" skating in the middle of summer! Boutiques featuring Ontario crafts. Pedal-boats to glide serenely through the canals. Tours of the famed destroyer HMCS Haida. An open-air land train. A Showboat to fill the waterways with music. Clowns, talking "animals", magicians and strolling players, marching and military bands all over the site. And plenty of grassy parkland for relaxing, picnicking, and people-watching.

Hours of Operation*

Park opens at 10:30 a.m.—closes 1:00 a.m. (Sundays at 10:00 p.m.) Theatres open at 11:00 a.m.—last show starts at 9:00 p.m.

Daily Summer Programme

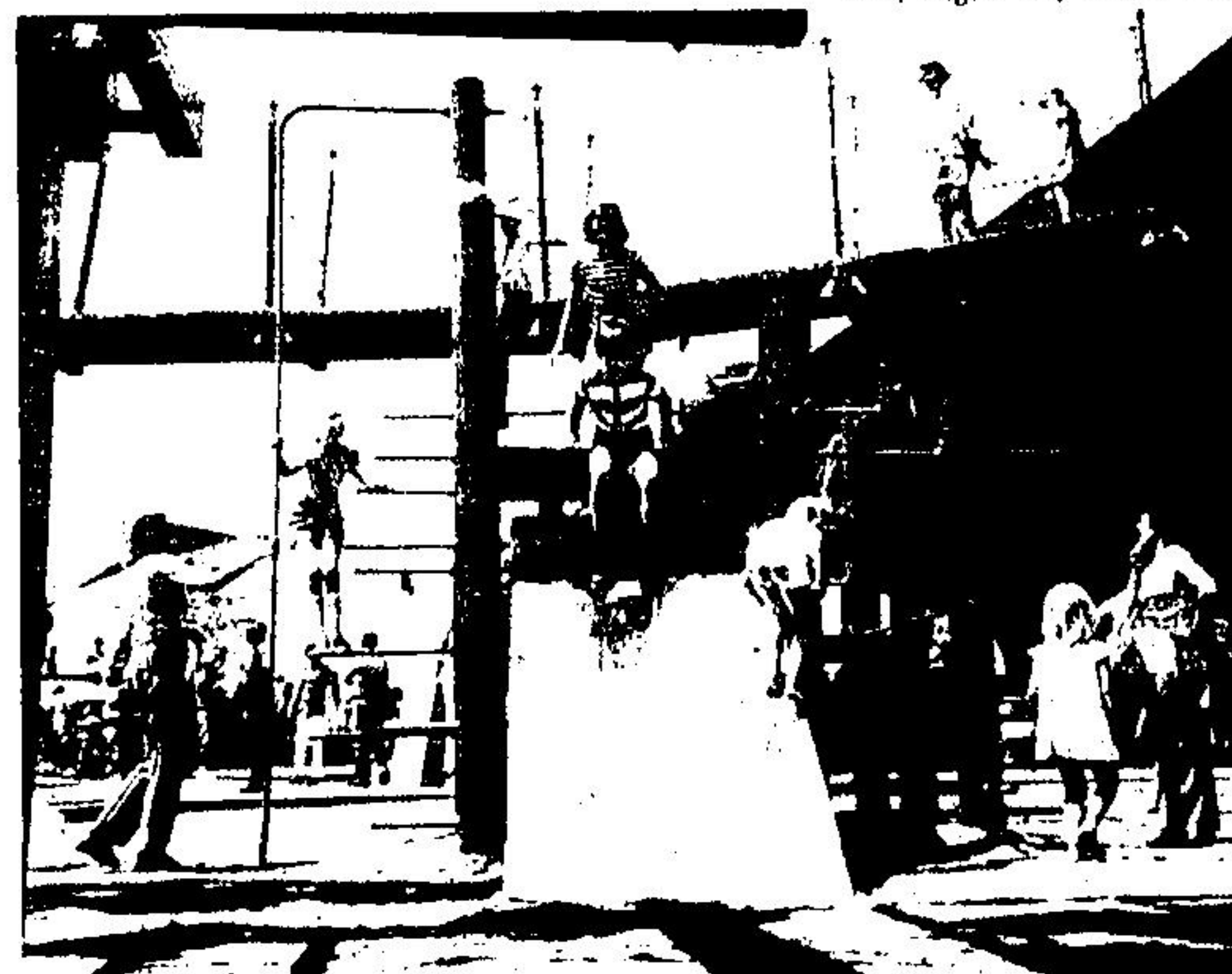
From May 17th, Victoria Day weekend, to Labour Day, September 1—park open seven days a week.

Weekend Autumn Programme

From September 6 to Canadian Thanksgiving, October 13—park open Saturdays, Sundays and holidays only.

Winter Programme

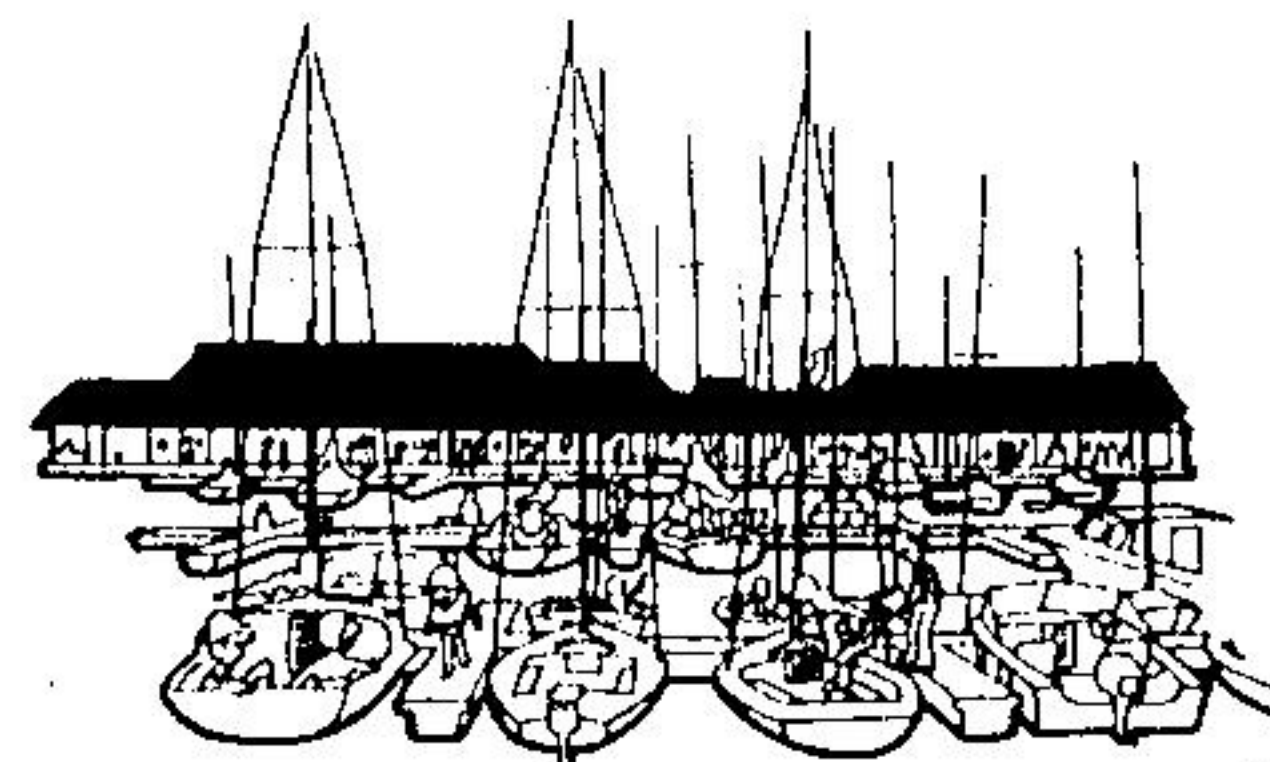
Daily December 15 to January 4 (closed December 24, 25, 31, January 1)



CHILDREN'S VILLAGE, A UNIQUE TWO ACRE PLAYGROUND

General Admission*

Adults (18 and over) \$1.50 each, \$1.00 after 9:00 p.m.
Juniors (13 to 17 incl.) \$1.00 each.
Children (12 and under) unaccompanied, 75c each.
Children (12 and under) with parent (limit of 4) no charge.
Ontario senior citizens admitted free of charge (except during C.N.E.)



Children's Village

Climb a Soda Fountain Mountain. Explore a Punch Bag Forest. Take a Moon Walk. Have a Water Cannon battle... in the two acres of sheer, unmatched fun known as Children's Village. Acclaimed internationally—with over two dozen ways for kids to have fun, wet and dry. Including the Storyland Miniature Golf Course, where grownups can join in, too.

Experiential Theatres

Multi-media experiences in theatres housed in pods high above the lake surround you in sound, light, colour and images. Like "Reflections"... flashes of light, a dazzle of colour, reflected in endless shimmering prisms. Or "32 Strings"... a symphony of the senses

projecting man's vision of happiness through the ages, from the ancient world to our own. Or a total involvement in the wonders of Northern Ontario through a stunning collage of slides, film and music.

And:

More than twenty great eating and drinking spots from lounges with



SUN SKATE, A PLASTIC SKATING RINK, OPENS AUG. 12

