

42. HELP WANTED

Leading Screw Manufacturer

REQUIRES

Experienced Cold Header Operators
Top Wages Paid to Right Individuals

CALL:
Mr. J. Nova
COLLECT AT
416-493-8710
OR EVENINGS
878-2089

42mg46

42. HELP WANTED

NOTICE TO ADVERTISERS: The Ontario Human Rights Code prohibits discrimination because of age, sex, marital status, race, creed, nationality, ancestry, or place of origin. In compliance with this code, this newspaper reserves the right to make the necessary changes in advertising copy.

SALESPERSONS

With experience in Central Home Air Conditioners. Good Commissions.

PHONE: 844-7354
FOR APPOINTMENT
42mg46

EXPANDING CANADIAN OIL COMPANY

needs dependable person who can work without supervision. Earn \$14,000, in a year plus bonus. Contact customers in Acton area. Limited Auto travel. We train. Air mail O. H. Dick, Pres., Southwestern Petroleum Canada Ltd., 87 West Drive, Brampton, Ontario L6T 2J6.

42a37

Two MPP's support plea

The group of Campbellville area residents pushing to have phone services extended for those on the 854 exchange have won the support of two MPP's.

Both Jim Snow, MPP for Halton East and George Kerr, MPP for Halton West have sent letters to the committee indicating their general agreement with the submission of the group has made to Milton Council and Bell Canada.

Mr. Kerr said he would attend a meeting the group plans to hold for the week of April 7 and support the wishes as expressed in the brief.

Mr. Snow said he agreed with the submission and would support the committee in its effort to have improved services for the people on the Campbellville exchange.

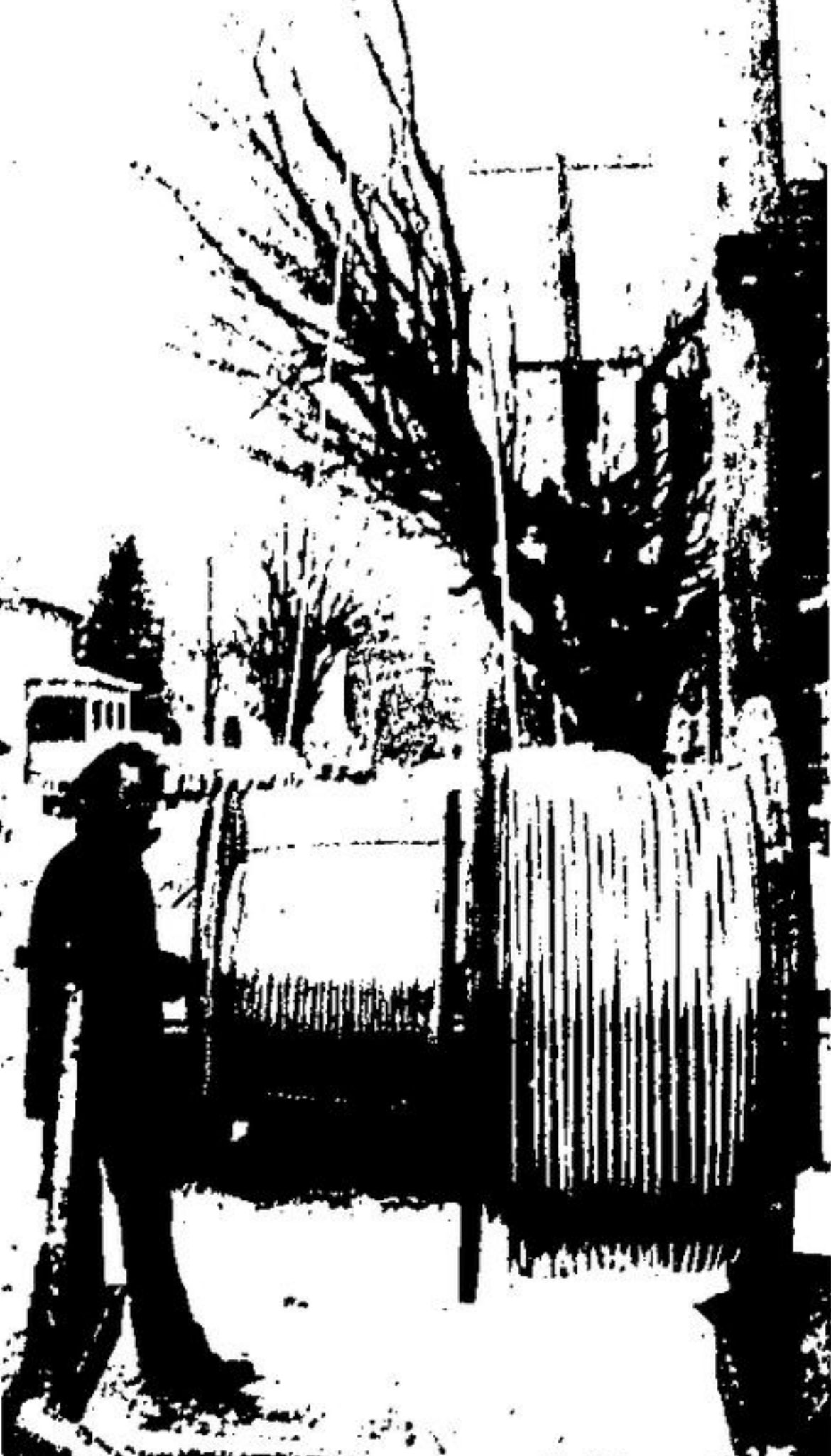
Snow said he had had discussions with Bell Canada and hoped to see expanded service for Campbellville and Acton included in the same directory. He said he would continue to support the wishes of the Campbellville area people and help in any way he could.

Premier William Davis has been appraised of the situation and has asked John Rhodes, Minister of Transportation and Communications to investigate the problem.

Mrs. G. H. Fish said there was a meeting planned for the week of April 7. Mrs. Fish indicated the meeting would be chaired by Mayor MacArthur and hopefully MPP's Snow and Kerr will be able to attend. It is at that point that Bell Canada representatives are expected to explain what can be done to broaden the coverage area for phone calling and indicate what the cost will be.

Mrs. Fish indicated she was optimistic that the Bell would be prepared to extend the calling distance so people on the Campbellville exchange would be able to have the same calling privileges as the people in Milton.

Following the proposal in April the Bell will survey people involved and ask whether or not the expansion of services is favored. A minimum of 60 per cent of all of the phone users have to reply in the affirmative if the service is to be extended.



THICK cable portends future TV viewing for Acton. Allan Richards, Toronto, sends two reels of 750 and 412 cable aloft.

EXPERIENCED IN ROOFING, BLACKTOP, CHEMICAL SALES?

SEND COUPON!

TERMINAL SELLING TOOL TO HELP YOU CLOSE MORE SALES

INFORMATION REQUEST COUPON (PLEASE COMPLETE & MAIL TODAY)

MAIL TO: CONSOLIDATED PAINT & VARNISH (CANADA) LTD., P.O. BOX 368 - MONTREAL 10th, Que. H3H 5L4

NAME _____
ADDRESS _____
CITY & STATE, OR PROVINCE _____
PHONE _____ AREA CODE _____

I HAVE _____ OR HAVE NOT _____ had experience in ROOFING and/or CHEMICAL and/or FLOORING and/or BLACKTOP SALES. NOTE: IF YOU HAVE HAD experience, please enter NAME of FIRM you represented. IF ANNUAL SALES VOLUME \$ _____

If the answer to the above is "YES", are you willing to FLY to Cleveland AT OUR EXPENSE, with your WIFE NO STRINGS ATTACHED TO INCREASE the probability of a PROFESSIONAL Career with us? _____

Or would you prefer to have management visit you? _____

42a37

CREDIT ASSISTANT
Required by
expanding Credit Union

Opening exists in our Loan Department for individual with Credit and/or Collection experience. Duties consist of Credit Investigation, Collection Follow-up, Loan and Mortgage Application Interviews.

This position offers an excellent future. Good Company benefits.

Salary commensurate with experience. Please submit resume or call _____

HALTON COMMUNITY CREDIT UNION LTD.
44 Main Street East
Milton, Ont.
878-4168

42mg46

screw manufacturing plant requires experienced cold heading set-up operators.

experienced thread rolling set-up operators.

also tool room attendant (suitable for semi-retired person) experienced in all phases of cold header tooling.

top salary and benefits

apply to
john arnold
878-7231

golden triangle fasteners

470 harrop road,
milton, ontario

42mg46

PERMANENT PART-TIME SECURITY OFFICERS

REQUIRED IN ACTON

also four officers required in Guelph

- WEEK-ENDS ONLY
- STEADY SHIFTS
- UNIFORM SUPPLIED
- GOOD WAGES

EXCELLENT TRAINING PROGRAM
OWN TRANSPORTATION REQUIRED

Contact
WACKENHUT OF CANADA

"One of the largest Investigative and Security Organizations in the World"

CALL 822-7210
Between 9 a.m. and 5 p.m. week-days

42a37

FULL TIME taxi drivers required. Must have thorough knowledge of Acton and must be 18 years of age or over.

42a37-5588

STORE MANAGER

Salary \$10,000 range. Dependable self-starter that can work without close supervision. Must be able to assume complete control of buying, pricing and staff scheduling. Excellent opportunity for advancement. Please reply in complete confidence giving full resume to:

BOX 388,
THE CANADIAN CHAMPION,
MILTON, ONT.

42mg46

64 BUSINESS OPPORTUNITIES

DO YOU WISH TO BE INDEPENDENT?

Excellent opportunity for executive type income for someone to operate a franchise variety store and "Pop Shoppes" in this area. Some financial participation required. Related experience helpful but will train the right person. Please give complete resume in first letter. All replies will be handled with complete confidence and all applicants will be granted an interview.

REPLY TO BOX 389,
THE CANADIAN CHAMPION,
MILTON, ONT.

42mg46

64 BUSINESS OPPORTUNITIES

DO YOU WISH TO BE INDEPENDENT?

Excellent opportunity for executive type income for someone to operate a franchise variety store and "Pop Shoppes" in this area. Some financial participation required. Related experience helpful but will train the right person. Please give complete resume in first letter. All replies will be handled with complete confidence and all applicants will be granted an interview.

REPLY TO BOX 389,
THE CANADIAN CHAMPION,
MILTON, ONT.

42mg46

WANT ADS WORK WONDERS

78. AUCTION SALES

78. AUCTION SALES

85 APARTMENTS FOR RENT

2 BEDROOM apartment, all utilities included. Call 853-2043. 8541-5416

1 and 2 BEDROOM Apartments, includes, frig, stove and utilities, 40 Maria St., Phone 853-3982. 8541-5596

1 and 2 BEDROOM Apartments with balcony, colored appliances, drapes, adults, no pets call 853-2003. 8541-5595

NOTICE AUCTION SALE

EVERY TUESDAY 7.30 P.M.

EVERY SUNDAY 1.30 p.m.

BALL AUCTIONS
615 Speedvale Ave. E.
Guelph, Ontario.
821-3621
(Budget Plan Available)

42a37

78. AUCTION SALES

78. AUCTION SALES

78. AUCTION SALES

78. AUCTION SALES

78. AUCTION SALES

78. AUCTION SALES

AUCTION SALE

of
Outstanding Antiques and Collectables

REMOVED FROM THE PREMISES FOR A PROMINENT LOCAL ESTATE TO BE SOLD IN MILTON, AT THE FAIR-GROUNDS IN THE AGRICULTURAL HALL, ROBERT ST. NOTE: NAME OF ESTATE BEING WITHHELD BY REQUEST OF THE FAMILY, FOR PERSONAL REASONS.

SATURDAY MARCH 15 AT 10:30 A.M.

FURNITURE—Carved oval walnut coffee table with lift off glass top; French Provincial fruitwood nest of tables; (ref.) pine buffet with white knobs; oak buffet with mirror; 4 matching oak chairs, plus other odd chairs; walnut rocket with carved back and upholstered seat; ladderback chair with gut seat; giant oak armchair with black leather upholstery, a real conversation piece; oak chaise longue; set of glass door bookcases; child's wicker chair; old school desks with wrought iron supports; outstanding miniature case made from old shadowbox frame; large wall magazine rack; matching pr. of corner wall brackets; 2 fan back chairs, (painted).

LAMPS—Exceptional red camphor Gone-With-The-Wind lamp, (electricified); ruby hanging hall lamp in brass frame with original small oil lamp; Tiffany-type hanging lamp, caramel colored glass; large matching pr. of oil lamps; lamp in iron bracket with mercury reflector; large R.R. lantern; floor lamp made from old flax reel; Ogco clock, weight driven.

PICTURES—Quantity of handworked mottoes in crossbar frames; large quantity of medium and small crossbar frames, containing old greeting cards and prints, oval frames incl. a matching pair; quantity of old pine frames incl. clipper ship, scenes and prints; Currier and Ives, reprints, in pine frames; small brass picture frames; pr. of French pictures, George Redon, Paris 1925; old engravings, incl. unusual three dimensional print of chariot race; large colored military print, Canadians at the Coronation, 1902; old mirrors, print in frame, of the Agricultural College of Guelph 1904.

GLASS—Cranberry thumbprint pickle cruet in silver frame; cranberry sugar bowl with enamelled flowers and frame; unusual vase with cranberry lily and green leaves and clear base; ruby sugar bowl in frame; cobalt blue silver deposit salt and pepper in silver frame; epergne, ruffled pink to green bowl on copper figurine base; large Bohemian glass decanter; blown decanter with enamel flower; milk glass sugar shaker; orange cased comport with enamel decor; Victorian vases incl. Bristol and black amethyst, depression and green camphor glass; covered compote; 2 moon and star goblets; pink flashed water pitcher; open salts; 6 footed saucers with ruffled edges; open comport, vases, creamers, etc.

LARGE QUANTITY OF CHINA INCLUDING—Copper lustre pitcher; Willow platter; 11 English soup plates, Roslyn pattern; Limoges plates, cups and saucers, Haviland Limoges relish dish; 30 pc. set gold band Haviland Limoges dishes; Nippon cocoa pot and cups; Bridal Rose platter; 4 pc. set of sugar, creamer, butter dish and relish tray; odd blue and white wash bowls and chambers; Austrian and Bavarian berry bowls, etc.; brass and silver pc.; assortment of old coins.

BOOKS, POSTCARDS, MISC. ETC.—Canadian books incl. 2 volumes "Men of Canada", 1891; York, 1885; plus other good old Canadian books of great interest; quantity of old newspapers; post card album with 150 postcards; odd lot of old postcards, incl. greeting and advertising; 1876 handmade home encyclopedia; outstanding album of news clippings & pictures from the 1870's; home Knowledge atlas 1898; other old books, incl. special Coronation issues; 13" Shirley Temple doll and other 45 yr. old dolls; set of doll dishes in original box; set of sleigh bells; odd twisty canes; wicker baskets; crocks, sealers, bottles; flat irons; odd horse collar and harness with blinkers; plus other numerous items.

Terms are cash or cheque with identifications. No reserves. Estate must be settled. Preview from 7:30 to 10 p.m. FRI. evening and from 9 a.m. SATURDAY until sale time. Lunch available. Executors, Hall Directors or Auctioneer not responsible for accidents.

AUCTIONEER'S REMARKS—This sale has a great deal of excellent items. See you at the sale!

AUCTIONEER: CHRIS. A. SCHOUTEN
878-2576
78mg46

86. REAL ESTATE

86. REAL ESTATE

Stone's Country Corner

PICTURESQUE FARM
\$145,000. Atmospheric 2 storey early Canadiana, and large barn nestled among mature trees at the end of a tree-lined lane, very scenic with large creek running through property. 142 acres of prime farmland with 127 acres workable. Would be excellent for horse farm.

MILTON FARM
100 acres. Lovely 2 storey solid brick home (vernacular) with shutters and flower boxes, featuring: centre hall plan, large separate dining room with the original panelling and french door, country-sized kitchen and laundry room on ground floor. Pine floors throughout. Large bank barn and 2 car garage creates lovely courtyard effect. Very scenic property. Vendor will hold first mortgage.

SCENIC BUILDING LOT
Lovely wooded property with pond site and cleared driveway. Complete privacy. Excellent terms.

For further information on these properties please call Hans or Inge Winther 845-7549 or res. 853-1990 or 878-5131.

E.W. STONE LIMITED, REALTOR
61 Lakeshore Road W., Oakville

86cmg37

78. AUCTION SALES

78. AUCTION SALES

AUCTION SALE

FOR
STAN FULLER & SONS

TO BE HELD AT THE FARM, LOT 15, CONCESSION 1 OF ERIN TOWNSHIP, SITUATED 1 MILE NORTH OF NO. 24 HIGHWAY, JUST OFF COUNTY ROAD 26 (ERIN-ERAMOSA TOWNLINE) MIDWAY BETWEEN GUELPH AND ERIN ON

SATURDAY, MARCH 15 at 12 NOON

TRACTORS AND MACHINERY—M.F. 175 diesel tractor 2200 hours, heat houser, M.H. 333 gas tractor, M.H. 30 gas tractor with front end loader, M.F. 35 self propelled combine 8', New Holland 479 Haybine, new, International 37 baler, New Idea mower 7', Windrow turner 3 p.h., new, M.H. No. 11 siderake, Hay Wagons with racks, M.F. seed & fertilizer drill, 15 run, M.F. disc harrow with hydraulic lift 10', 4 section drag cultivator, Hergott wheel cultivator 7', 10' roller and 1 roller suitable for parts, M.F. No. 74 1 1/2 beam plow 4 furrow, 14", New Idea No. 210 manure spreader 155 bus, John Bean orchard sprayer converted to weed sprayer with 21" boom, with double piston pump, 2 row Oliver corn planter 3 p.h., Gehl hammermill on wheels 15", p.l.o., Gehl belt driven hammer mill 10", Elevator on wheels with motor 26", Turco grain box 140 bus., Gehl auger type corn blower long table.

MISCELLANEOUS—Steel stone boat, Rubber tired steel wheelbarrow, 2 grain augers, 16', 4 wheel road grader, 2 electric fences, 1 hydro, 1 battery, circular saw with 2 blades 36", Fertilizer 6-24-10, 16 bags, Twine, Scarp metal, Red Seal motor for forage harvester for parts, 273 V8 Vaillant motor, Wire stretchers; 40 rod roll of wire, 5' of 32" wood extension ladders, Platform scales, 2,000 lbs., 2 snow tires on rims, 13" Iils Vaillant or Dodge, 4" ABS soil pipe, plastic fittings, elbows, tees, etc., Large cast iron kettle, welding bench, Car roof top carrier, Sep pan and pails; milk cans, steel posts, barb wire, Tractor tire 16-9 x 28 (used), Tires 14" x 15" suitable for implements, forks, shovels, chains, tools.

TRUCKS—1964 Chev Truck No. 30 closed body (1967 motor) as is, Livestock truck loading ramp, 1950 Dodge truck (not running).

DAIRY UTENSILS
27 can DeLaval milk tank cooler, 2 Surge units; 1 Hinman unit, 6 unit Hinman milker vacuum pump.

FURNITURE AND APPLIANCES—Inglis dryer, B & W portable TV and stand 16", Console stereo, Portable record player, B & W Electrolux TV and stand 19", Electrolux humidifier, Hoover Constellation vacuum cleaner, G. E. iron, lamps, antique washing machine, Hutch and coffee table, modern, Vinyl covered 2 seater couch, Lawn table with umbrella, Coffee table bookcase, Toys, skates, games, books, Odd cups and saucers and dishes, Curtains, bedspreads, 3 pair white flowered drapes 40" x 90", 3 pair white flowered drapes 40" x 90", Fiberglass, 3 pair gold plain drapes 40" x 90", Fiberglass, 2 pair black net curtains with valance 45" x 60", Large white bathroom sink with towel racks, White toilet with tank, light fixtures, large No. 5 crock.

PLEASE NOTE—EVERYTHING IN TOP CONDITION. A LARGE AND EXCELLENT OFFERING. FURNITURE SELLS FIRST AT 12 NOON. NO RESERVE, FARM SOLD. NOT RESPONSIBLE FOR ACCIDENTS. TERMS: CASH OR KNOWN CHEQU. LUNCH AVAILABLE

AUCTIONEER:
CHRIS A. SCHOUTEN
878-2576
78mg46

86. REAL ESTATE

86. REAL ESTATE

Second look

Halton M.P., Dr. Frank Philbrook, wants the government to take a second look at strikes by civil servants.

"I think we should take a long, careful look at strikes in essential services," he said in an interview this week.

He explained postal service must now be considered an essential service because of economic conditions and increased emphasis on communications. Dr. Philbrook noted essential services are no longer just police, fire, and medical services but in today's society communications must be included.

"There is a strong argument that postal service is no longer a convenience but is now an essential service. That is why I want all of us in Ottawa to take a second look at strikes by postal workers," he explained.

Dr. Philbrook pointed out the government is taking a hard line against illegal strikes. Some of the walkouts, which are effecting postal service, grain handling and airport snow removal, are legal and some are illegal.

"We can take a hard line but must remember that jail sentences and fines won't get these services moving again. What we have to do is work together—" Government and unions, and talk them into going back to work," he suggested.

Dr. Philbrook said he is aware small businessmen are hurt by the walkouts but doesn't think Ottawa is in any position to compensate these small businesses.

"You have to remember these strikes effect everyone and everyone is being hurt. This doesn't harm just the small businessman," he concluded.

Mailboxes damaged

In the past week several complaints were received at Guelph O.P.P. detachment involving damage to mail boxes in Erin township.

On March 7, Hugh Campbell of Bulk Stores Structures Ltd., Erin township reported theft of plywood from their property on 17 Sideroad. Value of the stolen lumber was estimated at \$3,600. Investigation is continuing by Guelph detachment.

Dispute at PLR

A dispute has surfaced between the United Steelworkers of America and the Milton-based P. L. Robertson Manufacturing Co. Ltd. over the company's March 3 imposition of a four-day reduced work week for all hourly-paid employees.

The USA local, with represents 320 workers, has submitted a formal grievance to the company on the matter. No meetings have been held to debate the issue.

A union source warned this week that "failing a settlement of the grievance, the union may take the issue to arbitration."

Another union source said that P. L. Robertson could be fined thousands of dollars daily by an arbitration board for its action.

A company official, yesterday, refused to discuss anything about the dispute.

86. REAL ESTATE

86. REAL ESTATE

APPOINTMENT

G. Alec Johnson Ltd., Realtor, is pleased to announce the appointment of Mrs. Patricia Salt to our sales staff. Having successfully completed the Canadian Real Estate Association's course at Sheridan College, she is looking forward to assisting Acton and area residents with their real estate needs. Mrs. Salt is a long time resident of Acton and she has made many friends and acquaintances since moving here with her family 15 years ago. So, if you're thinking of buying or selling a home in the Acton area and you want professional service and personal satisfaction, give Pat a call at G. Alec Johnson Ltd., Realtor, 853-2086.

86a37

78. AUCTION SALES

78. AUCTION SALES

AUCTION SALE

FOR
STAN FULLER & SONS

TO BE HELD AT THE FARM, LOT 15, CONCESSION 1 OF ERIN TOWNSHIP, SITUATED 1 MILE NORTH OF NO. 24 HIGHWAY, JUST OFF COUNTY ROAD 26 (ERIN-ERAMOSA TOWNLINE) MIDWAY BETWEEN GUELPH AND ERIN ON

SATURDAY, MARCH 15 at 12 NOON

TRACTORS AND MACHINERY—M.F. 175 diesel tractor 2200 hours, heat houser, M.H. 333 gas tractor, M.H. 30 gas tractor with front end loader, M.F. 35 self propelled combine 8', New Holland 479 Haybine, new, International 37 baler, New Idea mower 7', Windrow turner 3 p.h., new, M.H. No. 11 siderake, Hay Wagons with racks, M.F. seed & fertilizer drill, 15 run, M.F. disc harrow with hydraulic lift 10', 4 section drag cultivator, Hergott wheel cultivator 7', 10' roller and 1 roller suitable for parts, M.F. No. 74 1 1/2 beam plow 4 furrow, 14", New Idea No. 210 manure spreader 155 bus, John Bean orchard sprayer converted to weed sprayer with 21" boom, with double piston pump, 2 row Oliver corn planter 3 p.h., Gehl hammermill on wheels 15", p.l.o., Gehl belt driven hammer mill 10", Elevator on wheels with motor 26", Turco grain box 140 bus., Gehl auger type corn blower long table.

MISCELLANEOUS—Steel stone boat, Rubber tired steel wheelbarrow, 2 grain augers, 16', 4 wheel road grader, 2 electric fences, 1 hydro, 1 battery, circular saw with 2 blades 36", Fertilizer 6-24-10, 16 bags, Twine, Scarp metal, Red Seal motor for forage harvester for parts, 273 V8 Vaillant motor, Wire stretchers; 40 rod roll of wire, 5' of 32" wood extension ladders, Platform scales, 2,000 lbs., 2 snow tires on rims, 13" Iils Vaillant or Dodge, 4" ABS soil pipe, plastic fittings, elbows, tees, etc., Large cast iron kettle, welding bench, Car roof top carrier, Sep pan and pails; milk cans, steel posts, barb wire, Tractor tire 16-9 x 28 (used), Tires 14" x 15" suitable for implements, forks, shovels, chains, tools.

TRUCKS—1964 Chev Truck No. 30 closed body (1967 motor) as is, Livestock truck loading ramp, 1950 Dodge truck (not running).

DAIRY UTENSILS
27 can DeLaval milk tank cooler, 2 Surge units; 1 Hinman unit, 6 unit Hinman milker vacuum pump.

FURNITURE AND APPLIANCES—Inglis dryer, B & W portable TV and stand 16", Console stereo, Portable record player, B & W Electrolux TV and stand 19", Electrolux humidifier, Hoover Constellation vacuum cleaner, G. E. iron, lamps, antique washing machine, Hutch and coffee table, modern, Vinyl covered 2 seater couch, Lawn table with umbrella, Coffee table bookcase, Toys, skates, games, books, Odd cups and saucers and dishes, Curtains, bedspreads, 3 pair white flowered drapes 40" x 90", 3 pair white flowered drapes 40" x 90", Fiberglass, 3 pair gold plain drapes 40" x 90", Fiberglass, 2 pair black net curtains with valance 45" x 60", Large white bathroom sink with towel racks, White toilet with tank, light fixtures, large No. 5 crock.

PLEASE NOTE—EVERYTHING IN TOP CONDITION. A LARGE AND EXCELLENT OFFERING. FURNITURE SELLS FIRST AT 12 NOON. NO RESERVE, FARM SOLD. NOT RESPONSIBLE FOR ACCIDENTS. TERMS: CASH OR KNOWN CHEQU. LUNCH AVAILABLE

AUCTIONEER:
CHRIS A. SCHOUTEN
878-2576
78mg46

78. AUCTION SALES

78. AUCTION SALES

AUCTION SALE

FOR
STAN FULLER & SONS

TO BE HELD AT THE FARM, LOT 15, CONCESSION 1 OF ERIN TOWNSHIP, SITUATED 1 MILE NORTH OF NO. 24 HIGHWAY, JUST OFF COUNTY ROAD 26 (ERIN-ERAMOSA TOWNLINE) MIDWAY BETWEEN GUELPH AND ERIN ON

SATURDAY, MARCH 15 at 12 NOON

TRACTORS AND MACHINERY—M.F. 175 diesel tractor 2200 hours, heat houser, M.H. 333 gas tractor, M.H. 30 gas tractor with front end loader, M.F. 35 self propelled combine 8', New Holland 479 Haybine, new, International 37 baler, New Idea mower 7', Windrow turner 3 p.h., new, M.H. No. 11 siderake, Hay Wagons with racks, M.F. seed & fertilizer drill, 15 run, M.F. disc harrow with hydraulic lift 10', 4 section drag cultivator, Hergott wheel cultivator 7', 10' roller and 1 roller suitable for parts, M.F. No. 74 1 1/2 beam plow 4 furrow, 14", New Idea No. 210 manure spreader 155 bus, John Bean orchard sprayer converted to weed sprayer with 21" boom, with double piston pump, 2 row Oliver corn planter 3 p.h., Gehl hammermill on wheels 15", p.l.o., Gehl belt driven hammer mill 10", Elevator on wheels with motor 26", Turco grain box 140 bus., Gehl auger type corn blower long table.

MISCELLANEOUS—Steel stone boat, Rubber tired steel wheelbarrow, 2 grain augers, 16', 4 wheel road grader, 2 electric fences, 1 hydro, 1 battery, circular saw with 2 blades 36", Fertilizer 6-24-10, 16 bags, Twine, Scarp metal, Red Seal motor for forage harvester for parts, 273 V8 Vaillant motor, Wire stretchers; 40 rod roll of wire, 5' of 32" wood extension ladders, Platform scales, 2,000 lbs., 2 snow tires on rims, 13" Iils Vaillant or Dodge, 4" ABS soil pipe, plastic fittings, elbows, tees, etc., Large cast iron kettle, welding bench, Car roof top carrier, Sep pan and pails; milk cans, steel posts, barb wire, Tractor tire 16-9 x 28 (used), Tires 14" x 15" suitable for implements, forks, shovels, chains, tools.

TRUCKS—1964 Chev Truck No. 30 closed body (1967 motor) as is, Livestock truck loading ramp, 1950 Dodge truck (not running).

DAIRY UTENSILS
27 can DeLaval milk tank cooler, 2 Surge units; 1 Hinman unit, 6 unit Hinman milker vacuum pump.

FURNITURE AND APPLIANCES—Inglis dryer, B & W portable TV and stand 16", Console stereo, Portable record player, B & W Electrolux TV and stand 19", Electrolux humidifier, Hoover Constellation vacuum cleaner, G. E. iron, lamps, antique washing machine, Hutch and coffee table, modern, Vinyl covered 2 seater couch, Lawn table with umbrella, Coffee table bookcase, Toys, skates, games, books, Odd cups and saucers and dishes, Curtains, bedspreads, 3 pair white flowered drapes 40" x 90", 3 pair white flowered drapes 40" x 90", Fiberglass, 3 pair gold plain drapes 40" x 90", Fiberglass, 2 pair black net curtains with valance 45" x 60", Large white bathroom sink with towel racks, White toilet with tank, light fixtures, large No. 5 crock.

PLEASE NOTE—EVERYTHING IN TOP CONDITION. A LARGE AND EXCELLENT OFFERING. FURNITURE SELLS FIRST AT 12 NOON. NO RESERVE, FARM SOLD. NOT RESPONSIBLE FOR ACCIDENTS. TERMS: CASH OR KNOWN CHEQU. LUNCH AVAILABLE

AUCTIONEER:
CHRIS A. SCHOUTEN
878-2576
78mg46

78. AUCTION SALES

78. AUCTION SALES

AUCTION SALE

FOR
STAN FULLER & SONS

TO BE HELD AT THE FARM, LOT 15, CONCESSION 1 OF ERIN TOWNSHIP, SITUATED 1 MILE NORTH OF NO. 24 HIGHWAY, JUST OFF COUNTY ROAD 26 (ERIN-ERAMOSA TOWNLINE) MIDWAY BETWEEN GUELPH AND ERIN ON

SATURDAY, MARCH 15 at 12 NOON

TRACTORS AND MACHINERY—M.F. 175 diesel tractor 2200 hours, heat houser, M.H. 333 gas tractor, M.H. 30 gas tractor with front end loader, M.F. 35 self propelled combine 8', New Holland 479 Haybine, new, International 37 baler, New Idea mower 7', Windrow turner 3 p.h., new, M.H. No. 11 siderake, Hay Wagons with racks, M.F. seed & fertilizer drill, 15 run, M.F. disc harrow with hydraulic lift 10', 4 section drag cultivator, Hergott wheel cultivator 7', 10' roller and 1 roller suitable for parts, M.F. No. 74 1 1/2 beam plow 4 furrow, 14", New Idea No. 210 manure spreader 155 bus, John Bean orchard sprayer converted to weed sprayer with 21" boom, with double piston pump, 2 row Oliver corn planter 3 p.h., Gehl hammermill on wheels 15", p.l.o., Gehl belt driven hammer mill 10", Elevator on wheels with motor 26", Turco grain box 140 bus., Gehl auger type corn blower long table.

MISCELLANEOUS—Steel stone boat, Rubber tired steel wheelbarrow, 2 grain augers, 16', 4 wheel road grader, 2 electric fences, 1 hydro, 1 battery, circular saw with 2 blades 36", Fertilizer 6-24-10, 16 bags, Twine, Scarp metal, Red Seal motor for forage harvester for parts, 273 V8 Vaillant motor, Wire stretchers; 40 rod roll of wire, 5' of 32" wood extension ladders, Platform scales, 2,000 lbs., 2 snow tires on rims, 13" Iils Vaillant or Dodge, 4" ABS soil pipe, plastic fittings, elbows, tees, etc., Large cast iron kettle, welding bench, Car roof top carrier, Sep pan and pails; milk cans, steel posts, barb wire, Tractor tire 16-9 x 28 (used), Tires 14" x 15" suitable for implements, forks, shovels, chains, tools.

TRUCKS—1964 Chev Truck No. 30 closed body (1967 motor) as is, Livestock truck loading ramp, 1950 Dodge truck (not running).

DAIRY UTENSILS
27 can DeLaval milk tank cooler, 2 Surge units; 1 Hinman unit, 6 unit Hinman milker vacuum pump.

FURNITURE AND APPLIANCES—Inglis dryer, B & W portable TV and stand 16", Console stereo, Portable record player, B & W Electrolux TV and stand 19", Electrolux humidifier, Hoover Constellation vacuum cleaner, G. E. iron, lamps, antique washing machine, Hutch and coffee table, modern, Vinyl covered 2 seater couch, Lawn table with umbrella, Coffee table bookcase, Toys, skates, games, books, Odd cups and saucers and dishes, Curtains, bedspreads, 3 pair white flowered drapes 40" x 90", 3 pair white flowered drapes 40" x 90", Fiberglass, 3 pair gold plain drapes 40" x 90", Fiberglass, 2 pair black net curtains with valance 45" x 60", Large white bathroom sink with towel racks, White toilet with tank, light fixtures, large No. 5 crock.

PLEASE NOTE—EVERYTHING IN TOP CONDITION. A LARGE AND EXCELLENT OFFERING. FURNITURE SELLS FIRST AT 12 NOON. NO RESERVE, FARM SOLD. NOT RESPONSIBLE FOR ACCIDENTS. TERMS: CASH OR KNOWN CHEQU. LUNCH AVAILABLE

AUCTIONEER:
CHRIS A. SCHOUTEN
878-2576
78mg46

78. AUCTION SALES

78. AUCTION SALES

AUCTION SALE

FOR
STAN FULLER & SONS

TO BE HELD AT THE FARM, LOT 15, CONCESSION 1 OF ERIN TOWNSHIP, SITUATED 1 MILE NORTH OF NO. 24 HIGHWAY, JUST OFF COUNTY ROAD 26 (ERIN-ERAMOSA TOWNLINE) MIDWAY BETWEEN GUELPH AND ERIN ON

SATURDAY, MARCH 15 at 12 NOON

TRACTORS AND MACHINERY—M.F. 175 diesel tractor 2200 hours, heat houser, M.H. 333 gas tractor, M.H. 30 gas tractor with front end loader, M.F. 35 self propelled combine 8', New Holland 479 Haybine, new, International 37 baler, New Idea mower 7', Windrow turner 3 p.h., new, M.H. No. 11 siderake, Hay Wagons with racks, M.F. seed & fertilizer drill, 15 run, M.F. disc harrow with hydraulic lift 10', 4 section drag cultivator, Hergott wheel cultivator 7', 10' roller and 1 roller suitable for parts, M.F. No. 74 1 1/2 beam plow 4 furrow, 14", New Idea No. 210 manure spreader 155 bus, John Bean orchard sprayer converted to weed sprayer with 21" boom, with double piston pump, 2 row Oliver corn planter 3 p.h., Gehl hammermill on wheels 15", p.l.o., Gehl belt driven hammer mill 10", Elevator on wheels with motor 26", Turco grain box 140 bus., Gehl auger type corn blower long table.

MISCELLANEOUS—Steel stone boat, Rubber tired steel wheelbarrow, 2 grain augers, 16', 4 wheel road grader, 2 electric fences, 1 hydro, 1 battery, circular saw with 2 blades 36", Fertilizer 6-24-10, 16 bags, Twine, Scarp metal, Red Seal motor for forage harvester for parts, 273 V8 Vaillant motor, Wire stretchers; 40 rod roll of wire, 5' of 32" wood extension ladders, Platform scales, 2,000 lbs., 2 snow tires on rims, 13" Iils Vaillant or Dodge, 4" ABS soil pipe, plastic fittings, elbows, tees, etc., Large cast iron kettle, welding bench, Car roof top carrier, Sep pan and pails; milk cans, steel posts, barb wire, Tractor tire 16-9 x 28 (used), Tires 14" x 15" suitable for implements, forks, shovels, chains, tools.

TRUCKS—1964 Chev Truck No. 30 closed body (1967 motor) as is, Livestock truck loading ramp, 1950 Dodge truck (not running).

DAIRY UTENSILS
27 can DeLaval milk tank cooler, 2 Surge units; 1 Hinman unit, 6 unit Hinman milker vacuum pump.

FURNITURE AND APPLIANCES—Inglis dryer, B & W portable TV and stand 16", Console stereo, Portable record player, B & W Electrolux TV and stand 19", Electrolux humidifier, Hoover Constellation vacuum cleaner, G. E. iron, lamps, antique washing machine, Hutch and coffee table, modern, Vinyl covered 2 seater couch, Lawn table with umbrella, Coffee table bookcase, Toys, skates, games, books, Odd cups and saucers and dishes, Curtains, bedspreads, 3 pair white flowered drapes 40" x 90", 3 pair white flowered drapes 40" x 90", Fiberglass, 3 pair gold plain drapes 40" x 90", Fiberglass, 2 pair black net curtains with valance 45" x 60", Large white bathroom sink with towel racks, White toilet with tank, light fixtures, large No. 5 crock.

PLEASE NOTE—EVERYTHING IN TOP CONDITION. A LARGE AND EXCELLENT OFFERING. FURNITURE SELLS FIRST AT 12 NOON. NO RESERVE, FARM SOLD. NOT RESPONSIBLE FOR ACCIDENTS. TERMS: CASH OR KNOWN CHEQU. LUNCH AVAILABLE

AUCTIONEER:
CHRIS A. SCHOUTEN
878-2576
78mg46

78. AUCTION SALES

78. AUCTION SALES

AUCTION SALE

FOR
STAN FULLER & SONS

TO BE HELD AT THE FARM, LOT 15, CONCESSION 1 OF ERIN TOWNSHIP, SITUATED 1 MILE NORTH OF NO. 24 HIGHWAY, JUST OFF COUNTY ROAD 26 (ERIN-ERAMOSA TOWNLINE) MIDWAY BETWEEN GUELPH AND ERIN ON

SATURDAY, MARCH 15 at 12 NOON

TRACTORS AND MACHINERY—M.F. 175 diesel tractor 2200 hours, heat houser, M.H. 333 gas tractor, M.H. 30 gas tractor with front end loader, M.F. 35 self propelled combine 8', New Holland 479 Haybine, new, International 37 baler, New Idea mower 7', Windrow turner 3 p.h., new, M.H. No. 11 siderake, Hay Wagons with racks, M.F. seed & fertilizer drill, 15 run, M.F. disc harrow with hydraulic lift 10', 4 section drag cultivator, Hergott wheel cultivator 7', 10' roller and 1 roller suitable for parts, M.F. No. 74 1 1/2 beam plow 4 furrow, 14", New Idea No. 210 manure spreader 155 bus, John Bean orchard sprayer converted to weed sprayer with 21" boom, with double piston pump, 2 row Oliver corn planter 3 p.h., Gehl hammermill on wheels 15", p.l.o., Gehl belt driven hammer mill 10", Elevator on wheels with motor 26", Turco grain box 140 bus., Gehl auger type corn blower long table.

MISCELLANEOUS