

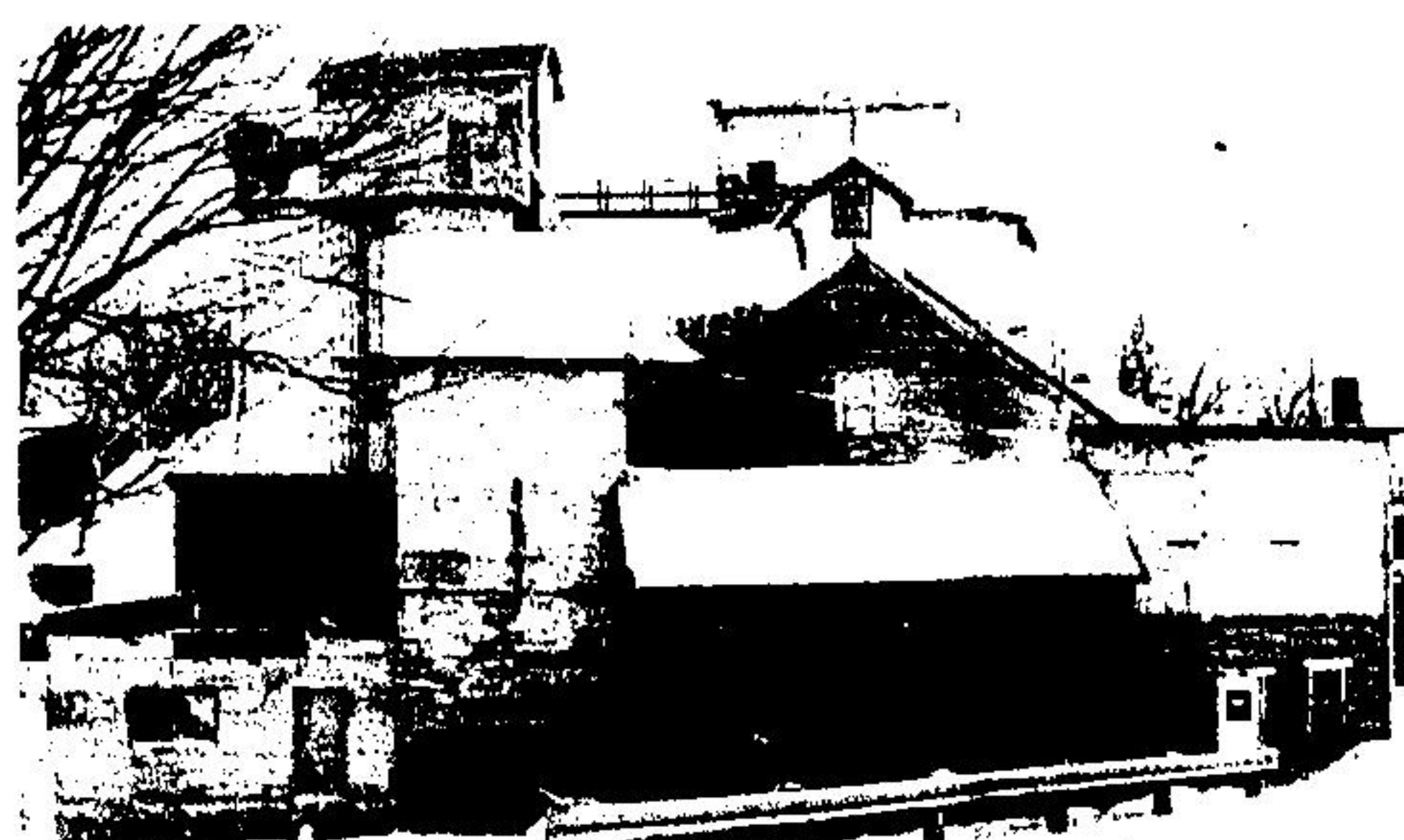
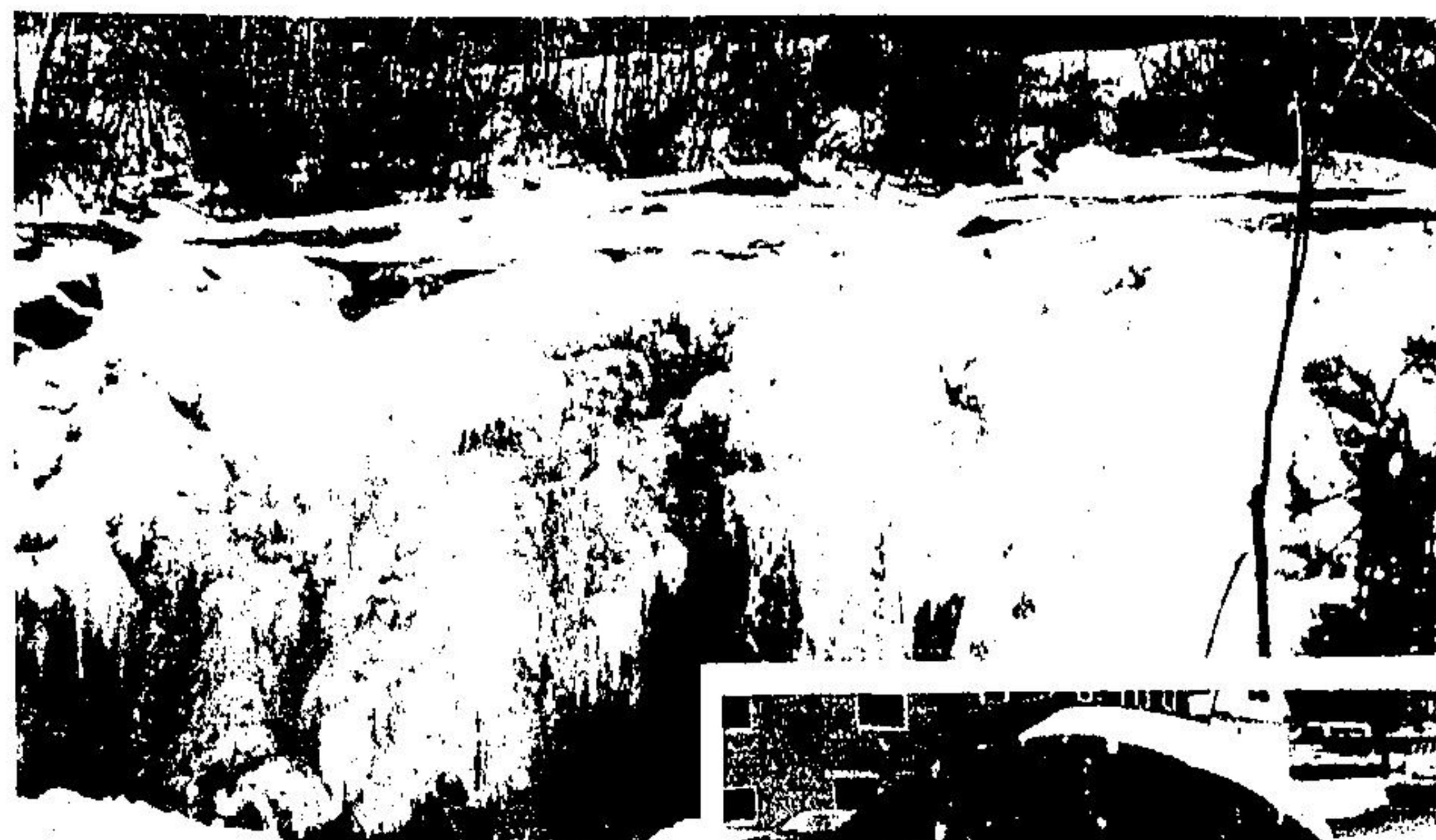
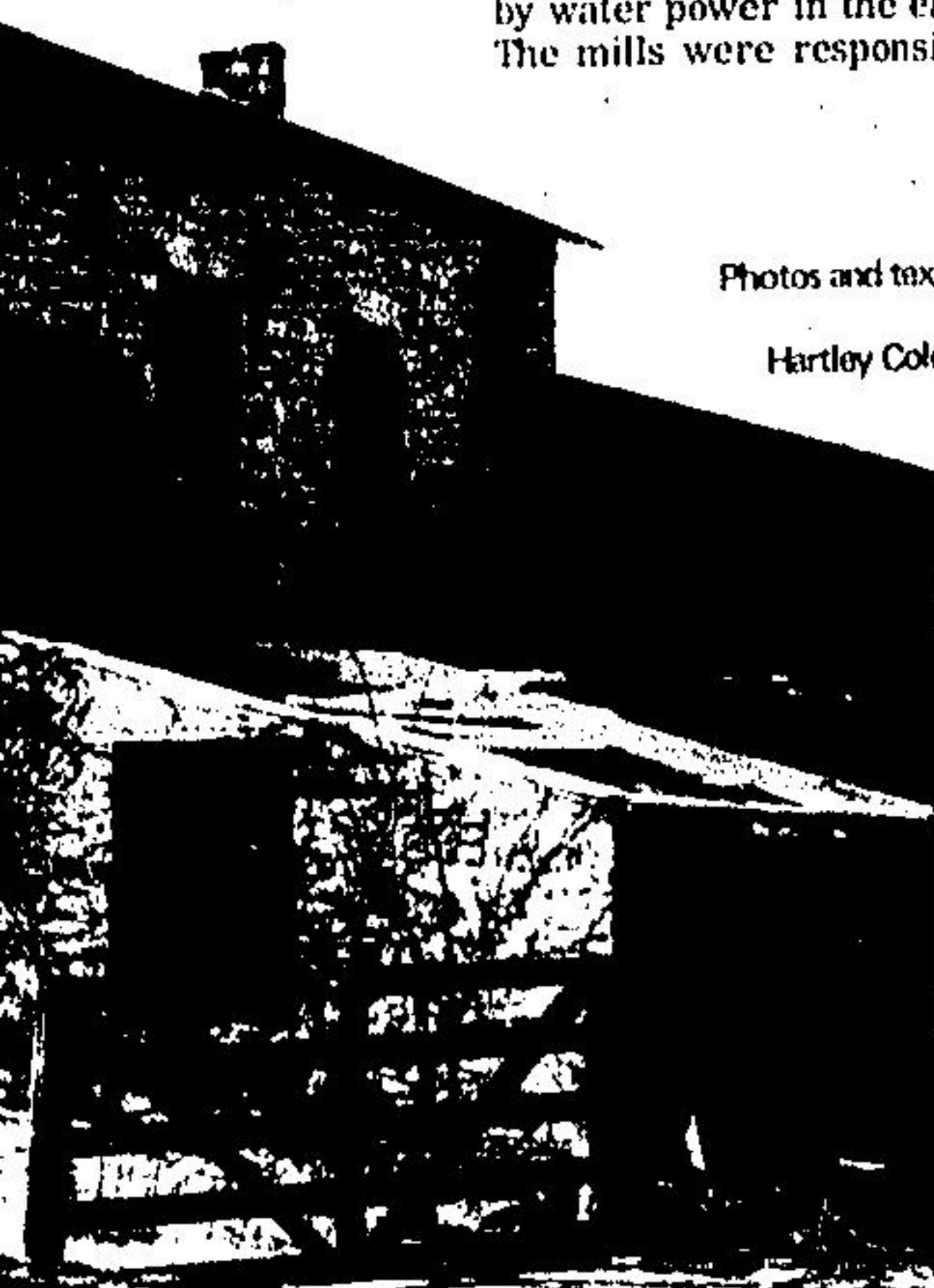
Early mills still dot countryside

Some are made of huge blocks of stone, others of timber, hewed and sawn on the site, but all were operated by water power in the early days of this part of Ontario. The mills were responsible for settlements which grew

into hamlets, villages and towns of early Ontario. Some of the settlements have long disappeared when other modes of power were used. Today we have black power, white power, red power, electrical power and many other forms

of energy but for the pioneers water power was the magnet that drew them to put down roots in this large district encompassing Halton Region and South Wellington County and spilling over into the Region of Peel.

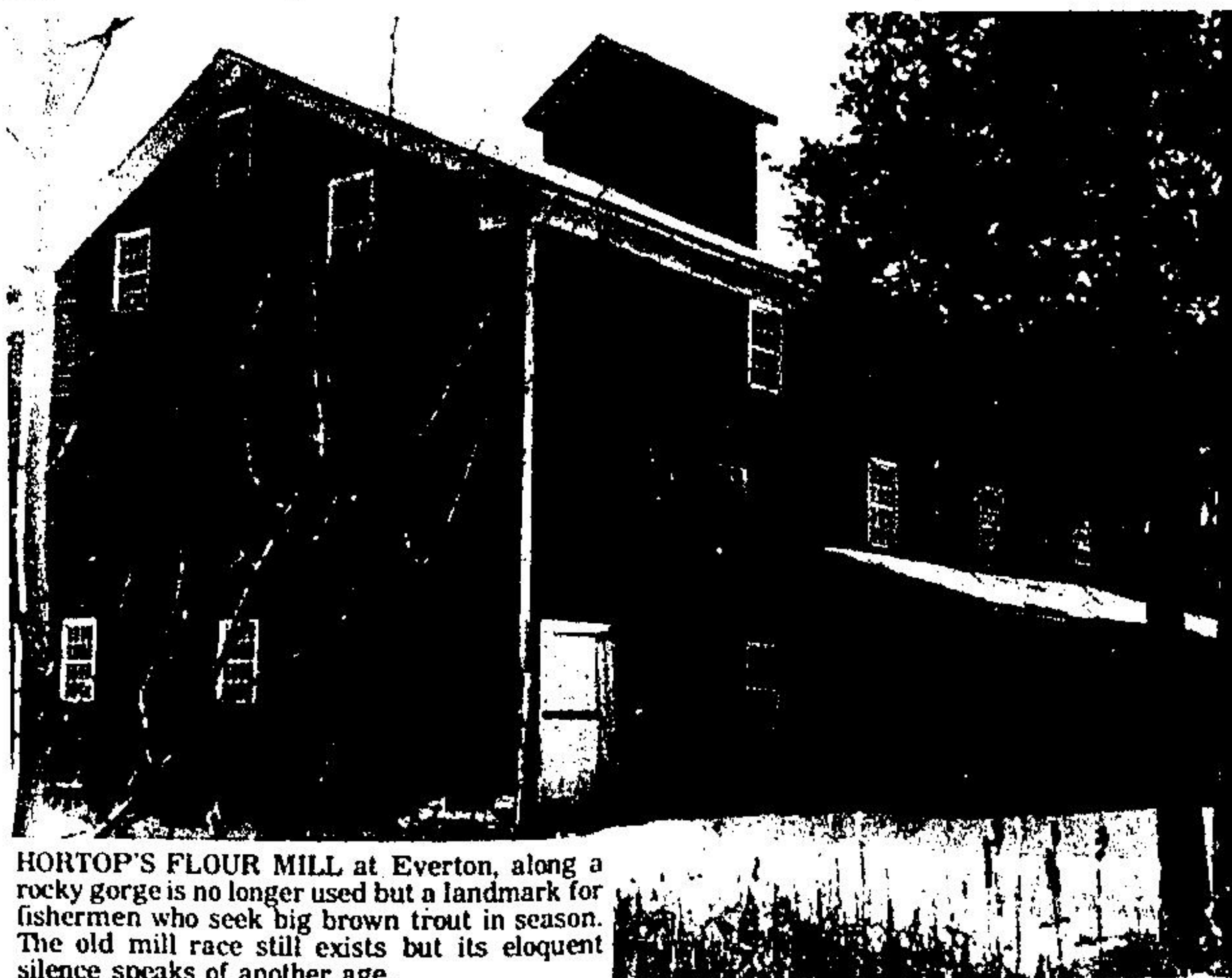
Photos and text by
Hartley Coles



THIS OLD MILLSTONE which ground grain, now sits mutely in front of a small restaurant of the same name beside the Eramosa River in Rockwood. What stories it could tell of early days in the district.

TUMBLING, FROTHING, swift, clear waters in creeks and rivers were harnessed by the pioneers of Upper Canada, now Ontario, to provide food and lumber for settlers in the area. A few of the mills still dot this area, but most have gone ravaged by fires or other disasters. When they've gone an important part of early Canada will have gone with them.

LINDSAY'S FLOUR MILL at Acton is still a going, growing concern. No longer tapping the waters of Fairy Lake, it grinds bread flour from wheat that has unusually fine qualities, a product of grain from fields in North Halton and South Wellington.



HORTOP'S FLOUR MILL at Everton, along a rocky gorge is no longer used but a landmark for fishermen who seek big brown trout in season. The old mill race still exists but its eloquent silence speaks of another age.



RELIC OF A SMALL VILLAGE, long since gone from Halton is this old mill. Dakota, adjacent to the Cedar Springs Community Club, a rustic resort, was devastated one day in October, 1884, when the powder mill which employed 200 hands blew up. It happened at noon when only six men were on duty and five of them died. The community of rustic homes covers the scars of that early Halton disaster.