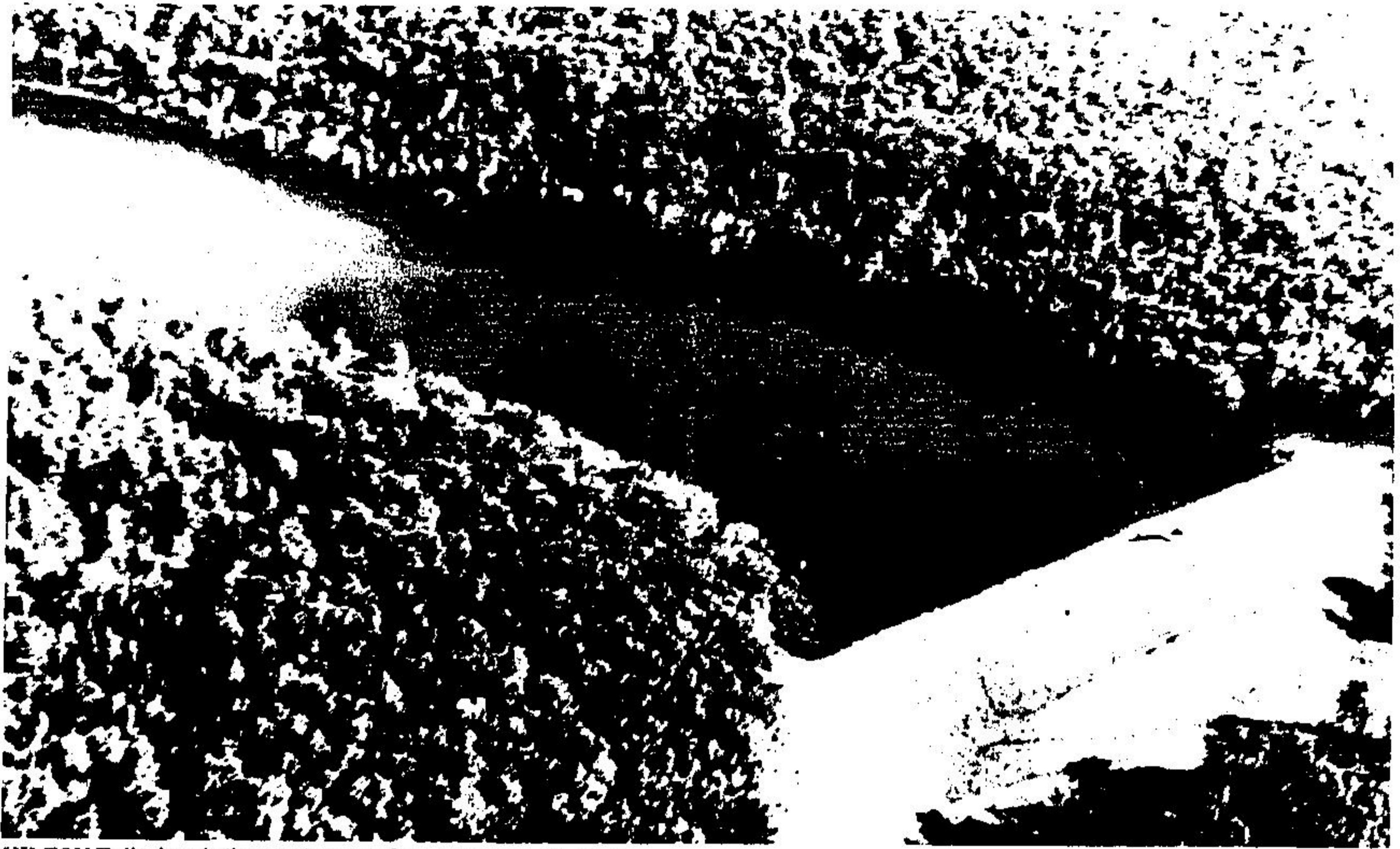




WATER rushing over the spillway at a dam in Stewarttown provides scenic beauty.



HILTON Falls dam is the most recent dam built in north Halton.



AN OLD dam at Norval retains its rustic beauty.



ROCKWOOD Dam is a haven for recreation and sports enthusiasts.



A VIEW from the air shows Scotch Block Dam in a scenic setting.

Dams affect livelihood

Halton's dams are numerous and range from the million dollar sophisticated structure at Scotch Block Dam to the simpler structures at Stewarttown and Norval.

Three major dams have been constructed in the central Halton area since 1960. The first of the three major dams was Kelso and more recently Scotch Block and Hilton Dam.

Each of those three are operated and managed by Halton Region Conservation

Authority while others in the Georgetown, Acton area fall under the authority of the Credit Valley Conservation Authority.

The structures have a greater affect on the livelihood of people in Halton Region than probably most individuals realize. Market farmers, golf courses and other organizations depending on summer water supplies depend partially on the use of dams to provide a constant water supply.

All property owners downstream from the dams depend on the structures for protection from floods. The town of Milton depends on Hilton Falls Dam in particular for a constant flow of water in the 16 Mile Creek. Without a constant flow the creek could become badly polluted. That is a direct factor in the town's ability to grow and support greater residential and commercial development. The stream is needed to carry away the treated sewage and effluent from the pollution control plant.



FAIRY Lake in A



KELSO Dam is recreation areas.

THE LAKE at Hilt