

Brethour

(Realtor)

Realty
Services
Ltd.

COUNTRY GENTLEMAN

102 acres, Acton area. 90 acres workable, balance woods, etc., large bank barn, plus 8 room, 3 bedroom stucco home with new furnace and wiring. Owner is very anxious to sell and the price is right. Try an offer. Call Carl Angus. Priced at \$135,000.

PUSLINCH

36 acres of rolling land on two road frontages, building permission granted, natural pond area, some acreage under cultivation, priced to sell at \$54,000. Contact Betty Ingle for further information.

COUNTRY HOME

Country home situated on 7 acres of rolling land with barn and fenced area for horses, home consists of modern kitchen, 3 bedrooms, living room, separate dining room, nicely landscaped, priced to sell at \$89,500. Contact Betty Ingle for appointment to view.

ESCARPMENT

One acre of land and a 5 year old bungalow located just west of Milton on the Niagara escarpment featuring 4 bedrooms, separate dining room, living room, modern kitchen with built-in dishwasher and stove and 2-4 pc. baths. Priced to sell at \$64,000. For further details please contact Willena Redden.

PIONEER LOG

A unique 1 1/2 storey log home, built in 1846 and restored in 1966. Offering pine floors, beamed ceilings, 3 bedrooms, 2 bathrooms, and 24' living room with an old fashioned brick fireplace, separate dining room and a cozy kitchen with pine cupboards. The walkout basement is completely finished. Nestled in 18 acres of mature maples and birch. Please call Les Bunker for viewing. Asking price \$125,000.

ACTON

3 bedroom home on nearly an acre of land, only 3 years old. Nicely decorated throughout with large kitchen and living room, lots of cupboards. An ideal first home for a lucky young couple. Priced right at \$54,000. Please call Willena Redden for further information.

EARLY CANADIAN

Early Canadian stone house built in 1849. Restored and not spoiled. Featuring 9 rooms, pine and oak floors, 2 bathrooms and an excellent floor plan. Includes a small barn and large pond. Located on 10 acres well fenced, just south of Milton. Asking \$159,000. Please call Les Bunker for details.

EAST FLAMBORO

108 acre farm, with two older homes, barn and garage. The value is in the land. Further information from Edna Joel. Asking price \$150,000.

BRETHOUR REALTY SERVICES LIMITED

Milton **878-4121**

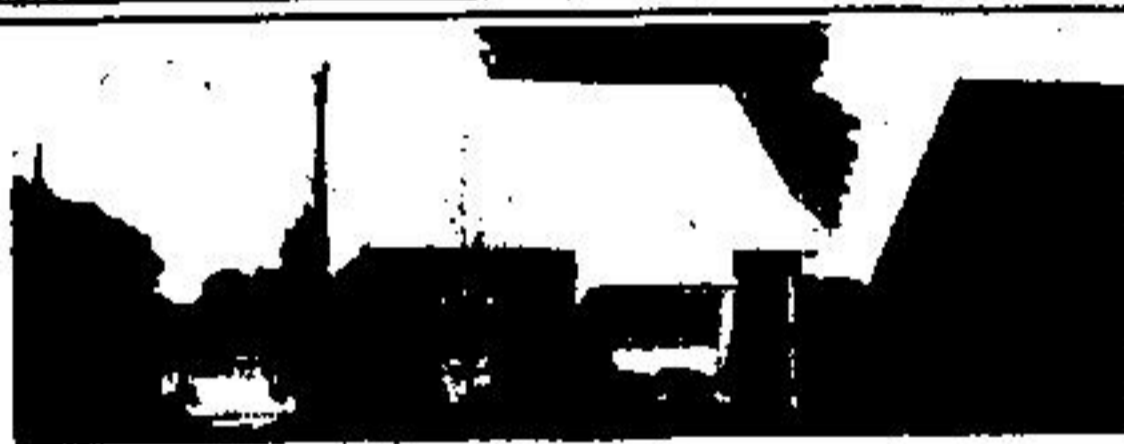
Les Bunker
(Manager)

Betty Ingle
Willena Redden

Carl Angus
Edna Joel

"Doc"
Gowland

Toronto **826-3085**



\$48,900.00
BEAUTIFULLY DECORATED brick home situated on a large attractively landscaped lot with swimming pool, 3 bedrooms, family kitchen, ground floor den or 4th bedroom, fitted broadloom. A must to see at this price.



\$69,500.00
COUNTRY GEM—Situated on a picturesque half-acre centrally located between Acton, Milton and Georgetown. Family kitchen with patio doors to sundeck, separate dining room, 3 bedrooms, recreation room with Franklin fireplace, separate two-car garage and workshop.



\$40,900.00
BUY OF THE WEEK—3 bedroom home in central Acton, situated on an extra large private lot with mature shade trees: eat-in kitchen, broadloom, full basement. Owner leaving province, must sell. Try an offer.

G. ALEC
JOHNSON
LTD.
REALTOR
2 Mill Street East, Acton
853-2086

Reception Information Centre



Now open during weekends only.
Highway 25—above Milton

Rockwood

New three bedroom brick backsplit on double lot backing onto ravine. About 1,400 sq. ft., \$56,000.

Georgetown

Brick bungalow, 1,100 sq. ft. on quiet crescent with inground swimming pool. \$45,000.

Hwy. 401 - Guelph Line

10 acre high lot with 2,400 sq. ft. Home of your choice to be built. \$110,000.

One acre lot on Guelph Line with 1,800 sq. ft. bungalow now being built. \$76,000.

Speyside

15 acre lot mostly high pine trees, asking \$50,000.

2 acres, all treed, \$35,000.

Eden Mills

24 acres backing onto the Eramosa River. \$40,000.

Representatives
Milton
YVONNE BRIGHT
878-5603
Rockwood
Georgetown
KERRY CHALMERS
856-4890
Acton
EVELYN WOOD
853-1308

FOR SALE
bert
853-2059
457-9029 le roy
REAL ESTATE BROKER

DON HAMILTON

REAL ESTATE AND INSURANCE LTD.

132 WALLACE AVE. N. - LISTOWEL

Telephones: Bus. 291-3500,
Res. 356-2558

145 Acre Farm

9 room brick home in good condition, imp. shed, bank barn, set up for hogs and beef, asking only \$79,500. CALL ORVAL HARRISON, 1-519-291-2927.

106 Acre Dairy Farm

8 room stone house with modern conveniences, bank barn with a completely new dairy set up, 4 stall milking parlour, pipeline, bulk tank, 38 free stalls, also 20 x 70, unloader. CALL BOB BALLANTYNE 1-519-356-2576.

35 Acre Hobby Farm

In the Kitchener Stratford area, highway location, attractive 2 storey home in excellent repair, large barn ideal for horses or other uses, asking \$60,000.00. CALL GORD MEPHAM 1-519-393-6880.

150 Acre Beef Farm

Nearly all workable land, bank barn in good condition suitable for beef or pigs, new steel grainery, 4 bedroom brick home, priced to sell at \$85,000.00. CALL JAKE ARENDS 1-519-291-1788.

2 1/4 Acres

Located in picturesque village near Listowel, 4 bedroom, 2 storey home with family room, beautiful lot with tall trees, terraced lawns, spring stream, trout pond and small bush, only \$35,500.00. CALL DAVE SIMPSON 1-519-291-3458.

200 Acre Beef

Or cash crop farm, 190 acres of well drained workable land, 2 sets of good buildings making an ideal family operation. CALL DOUG HAMILTON 1-519-356-9085.

150 Acre Dairy Farm

In the Stratford area, attractive 2 storey home, bank barn with 39 ties plus pens, bulk tank, milk transfer system, imp. shed. CALL BETTY WOLFE 1-519-625-8240.

200 Acre Dairy Farm

Large barn with space for approx. 125 milk cows, double 8 milking parlour, new milk house, pipeline, silo 24x90 with unloader, new 3 bedroom bungalow, 2 bedroom home for hired help.

SEND FOR FREE FARM CATALOGUE

DON HAMILTON
REAL ESTATE & INS. LTD.,
132 WALLACE AVE. N.,
LISTOWEL, ONT.