

FERGUS GLEN ESTATES

Fergus Glen Estates is designed with the whole family in mind from the uniqueness of the town to the spacious homes situated near the scenic Grand River on large lots 198 x 88.

You will be impressed with hundreds of details including broadloom through-out, modern forced air gas heating, ground floor family rooms and his and hers garages.

Ideally located 40 minutes from Brampton and thirty minutes from Milton. Fergus Glen Estates deserves your inquiry especially at \$45,500.00.

27 HOMES - - - 23 LEFT



THE SUTHERLAND

Priced at \$48,900.00 and having 1,537 sq. ft. of finished living area this luxurious split level home is ideally situated on a gigantic lot 198' x 88'. Sounds good—looks even better. Call Brian or Liz Stuart 877-5237, 1-519-843-4340, 361-0590. Bramalea Realty Limited Realtor.

Be the first on your block to be the first on our block!



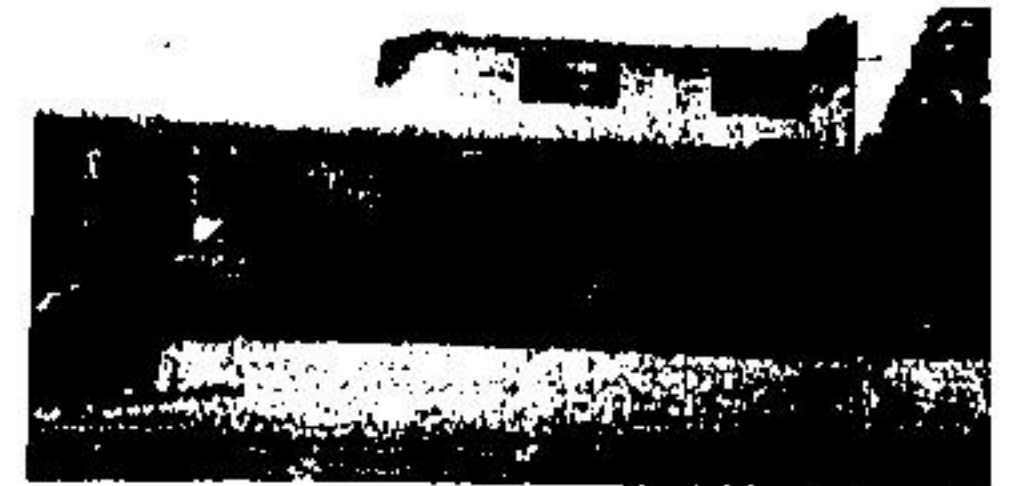

BRAMALEA REALTY LTD.

REALTOR

GROWING . . . THROUGH YOUR CONFIDENCE
NOW 42 OFFICES THROUGHOUT ONTARIO

A.E. LEPAGE

61 YEARS' CONTINUOUS SERVICE
Member of the Toronto, Oakville and Brampton
Real Estate Boards



HOME OF THE WEEK. Four bedroom home on 1/2 acre, separate living and dining, family room, 2 fireplaces and an 18 x 32 above-ground pool, one 3 room apartment and one 4 room apartment, many extras too numerous to mention. Perfect setting and location for a residence and business.



BARGAIN OF THE WEEK. Spotless, 3 bedroom bungalow on a beautifully landscaped lot features fireplace in the family room and extras such as water heater, water softener, drapes, carpeting in the living room, dining room and hall. Asking \$52,900. Call now.

ACTON TRI-LEVEL. Three bedrooms, separate dining room, family room, large kitchen, very clean and situated on well-landscaped lot. \$53,900.

BUILDING LOT: 610' x 650'—flat land, ideal for hobby farm or riding stable (survey and building permit available). Asking \$41,900.

FOR LISTINGS—TRANSFERS—SALES
FROM COAST TO COAST CALL

W. REX COCK 877-4267

DON HAMILTON

REAL ESTATE AND INSURANCE LTD.

132 WALLACE AVE. N. - LISTOWEL

Telephones: Bus. 291-3500,
Res. 356-2558

200 ACRE BEEF FARM

Broom home with modern conveniences, 10 room brick home, 3 barns 35x60, 55x60 and 40x60, imp. shed, garage, 190 acres workable, excellent cash crop land. CALL DOUG HAMILTON 1-519-356-9085.

190 ACRE BEEF FARM

1/2 mile from highway, 3 bedroom brick home in good condition, large bank barn suitable for beef or pigs, priced to sell. CALL BOB BALLANTYNE 1-519-356-2576.

57 ACRES

Only 3 miles from Listowel, highway location, 3 bedroom brick home with new garage and utility room, shed, asking \$50,000.00. CALL DAVE SIMPSON 1-519-291-3458.

100 ACRE MIXED FARM

4 bedroom aluminum sided home in good condition, workshop, imp. shed, bank barn suitable for beef, pigs, or horses, only \$56,000.00. CALL ORVAL HARRISON 1-519-291-2927.

124 ACRES

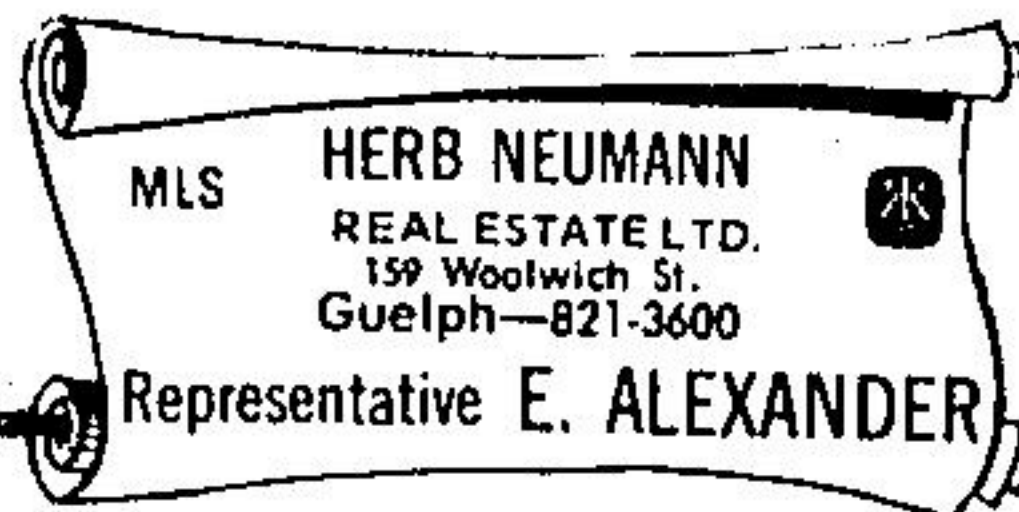
Of excellent cash crop land, near Stratford, nearly all workable, bank barn in good condition, attractive home with modern conveniences. CALL GEORGE WOLFE 1-519-625-8240.

185 ACRE DAIRY FARM

On highway near Listowel, large barn with milking parlour and free stalls, silo with unloader, new imp. shed, 3 bedroom brick home. CALL JAKE ARENDS 1-519-291-1788.

SEND FOR FREE FARM CATALOGUE

DON HAMILTON
REAL ESTATE & INS. LTD.,
132 WALLACE AVE. N.,
LISTOWEL, ONT.



Georgetown

Three bedroom bungalow. Excellent for retirement in quiet Park district. Situated on 1/3 acre lot. Loaded with many extras and close to all amenities.

Original Log Cabin

Just renovated with two bedrooms upstairs. Living room and unique kitchen on main floor. Situated on 3 acres. Close to Fergus. Asking price is \$39,900.

ELEANOR ALEXANDER

853-1890

COMPARE OUR PRICES

You will find they are close to market value. After all, we are engaged by the vendor to obtain market prices.

LISTING YOUR PROPERTY WITH US GIVES YOU:

1. Guaranteed weekly advertising in Georgetown, Acton, Milton, Oakville, and Mississauga papers.
2. Multiple listing with Oakville Real Estate Board.
3. Our factual advertising eliminates needless inspection of your property.
4. We will help you obtain "free bridge loans."
5. If needed, we guarantee your home.

MILTON BUILDER'S HOME

1300 foot brick bungalow in older subdivision. This builder-owned home is in spotless condition. It features exceptionally well-finished basement, double garage, two 3 piece bathrooms, fireplace. Asking \$45,000.



A KENNEL LICENSE



Comes with this fine three bedroom 1300' brick bungalow, 2 1/2 scenic acres north of Milton. Very large basement room. Asking \$89,900.

ONE ACRE LOT

Guelph Line

Spacious two storey house to be built on this Guelph Line lot. Discuss details now. Price approx. \$45,000 to \$85,000.

ESCARPMENT OVERLOOKING MILTON

Very large brick bungalow, 2400 square feet on five exclusive acres. This home features five bedrooms, very large living and dining room as well as a recreation room on the lower walkout level. Several washrooms and fireplaces. Balcony on back of house. Also double garage. Asking \$140,000.

10 ACRES-SPEYSIDE

Seven miles from Milton. All treed, mostly pine, 20-30 feet high. Asking \$50,000.

Representatives

YVONNE BRIGHT
878-5603

KERRY CHALMERS
Rockwood
856-4890

FOR SALE

bert

853-2059

457-9029

le roy

REAL ESTATE BROKER

If no answer
ask for

1. Hespeler Mobile operator
2. Hamilton Mobile operator JK2-4937