

## Outdoor education offered in Wellington

Residents of Eramosa will be interested in an article taken from the 1973 annual report of the Wellington County Board of Education which gives an insight into the present use of the Eden Mills public school located on County Rd. 29 in Eramosa. Outdoor Education is an approach to the teaching/learning process which offers the whole outdoor environment as a medium for education—a real-life laboratory. Most people recognize the unlimited opportunities which pertain to an outdoor setting in developing the child's physical and cognitive skills. Teachers recognize the added value of this approach in the development of positive attitudes, creativity and social awareness. The teachers of Wellington County have had cause, in the past, to appreciate the Board's firm support of their aspirations for the development of an outdoor program and enjoyed the strong support of the Board again in 1973.

Eden Mills The Wellington County Board of Education began the 1973 year with three outdoor education sites in operation. Both the Eden Mills Field Centre and Belwood Lake Outdoor Education Centre operated full time to accommodate visits by all grade 6 and 8 classes. Everton, a Grand River Conservation Authority property, was available for a total of thirty days and was used exclusively for the secondary schools. The Outdoor Education Co-ordinator employed by the Board worked in close co-operation with the regular classroom teachers to co-ordinate all visits. Eden Mills Outdoor Education Centre saw the addition of a weather station and wildlife study equipment.

An Outdoor Education Teacher, was appointed in September, 1973, to assist the Co-ordinator with work at the centres, the development of new activities, and the presentation of teacher workshops.

Survey Summer 1973 was utilized by outdoor education staff to conduct a survey of outdoor education sites in Wellington County. With the aid of a Ministry of Education S.P.I.C.E. grant, and Board support, two university students completed a 200-page index of accessible study sites. Copies of the index were given to the teachers in each school in the County to assist them in utilizing local outdoor education sites.

Following a survey of secondary school needs in outdoor education in the fall of 1973, a program of central storage of equipment was begun. Each secondary school planning a training session or field trip may borrow outdoor education equipment from the central field office located at Eden Mills.

The addition of equipment and personnel during 1973 permitted a program of greater variety and a more flexible schedule of visits to the field centres. In the fall of 1973, teachers participating in these programs had an opportunity to request up to three visits and to name the centre and date of their choice. In addition, a special sequence of visits was arranged for special education classes.

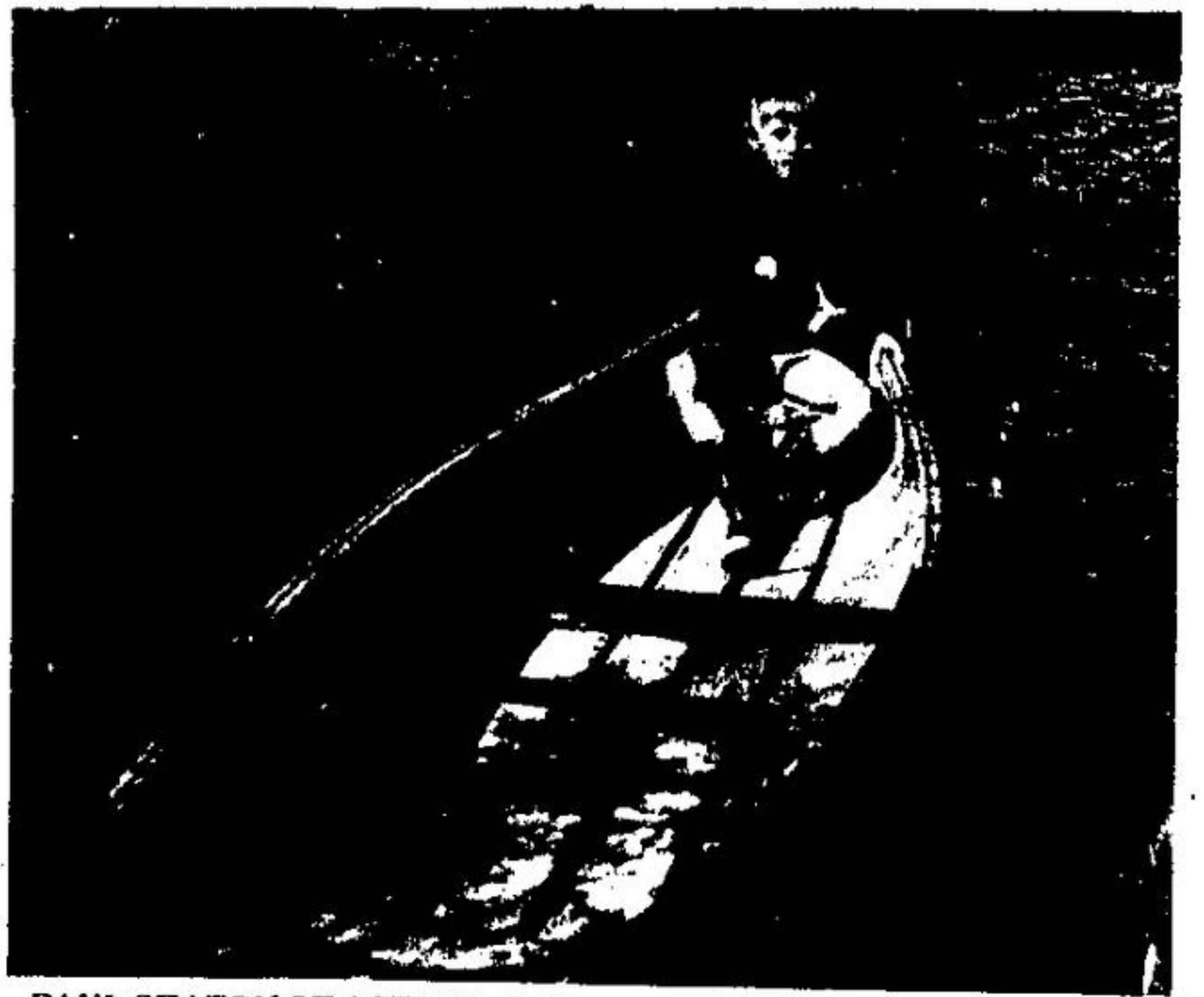
At the secondary level, the outdoor education staff has worked to provide increased support of programs designed by individual teachers. In addition to making certain equipment available, direct assistance in program planning and pre-trip training as well as assistance in the field is available on request.

Of benefit to all teachers was the addition of a monthly outdoor education newsletter

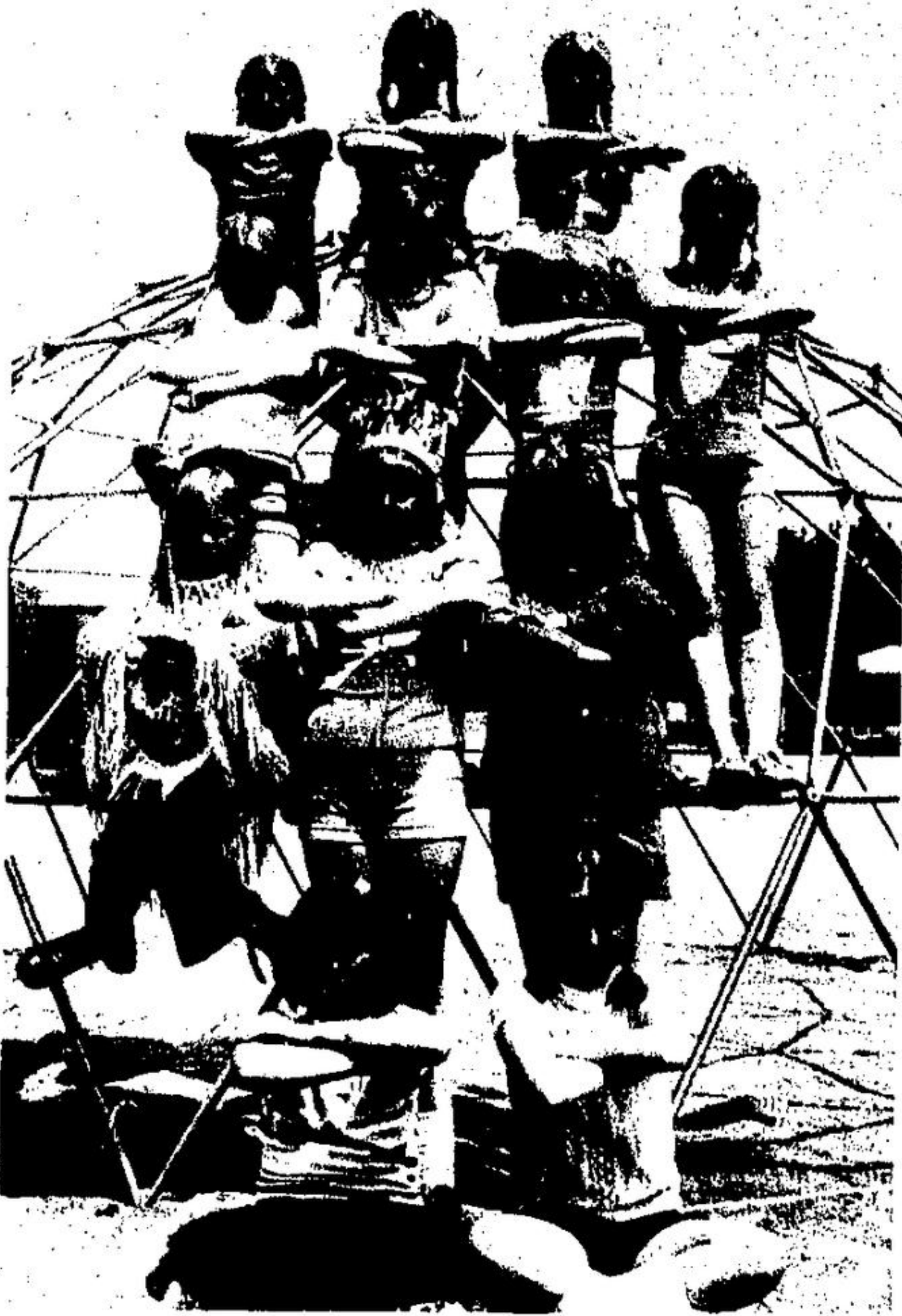
entitled "Wellington Outdoors". This publication is circulated to all schools, administrators and trustees. It was designed to inform all readers of new developments in outdoor education, and to present articles of general interest to all teachers.

In-Service 1973 saw continued emphasis on the regular introductory in-service sessions as well as the introduction of several new workshops. A three-session tree identification workshop was typical of the regular in-service program while a seven-session program designed to help teachers update or obtain life-guard qualifications in swimming marked a new venture in the field of teacher in-service. Forty-three teachers were able to obtain their Teacher's Aquatic Standard.

Outdoor Education, with goals involving knowledge, skills, attitudes, values and behaviour, services to link classroom theory with the real world - its challenges, problems and satisfactions. The total community environment has become the setting for curricula intended to prepare the student for effective living in a changing world.



PAUL SEATON OF ACTON is the ten year old canoeist who enjoyed just sitting tied to the dock at the Rockwood conservation park on Monday. Bird watching, Paul enjoyed feeding ducks who happily swim about in the area near the former Fourth Line bridge.



INDIAN WEEK at Rockwood Centennial school playground sees the ten to 13 year little Indians practicing for a play which will be presented later this week. Big chief Lorie Jameson is flanked by Sherri Brace and medicine man Carol Milbourne with Diana Earle on far left; Darlene McLaren and Charlene Glendenning at front; Corrine Gooyers, Marilyn Kelly and Linda Coad on third rung and, sitting on top the monkey bar teepee, are Lori Greenis, Laura Milbourne and Mary Lou Kelly.

## Adult education in five centres

According to the Wellington County Board of Education annual report, adult education, in the form of evening classes, is administered by The Wellington County Board of Education in five centres throughout the County. The centres are: Arthur District High School, Centre Wellington District High School, Fergus, John F. Ross Collegiate and Vocational Institute, Guelph, Mount Forest District High School, Norwell District Secondary School, Palmerston.

Courses are provided in various commercial subjects at different levels, technical and vocational subjects including metal working, woodworking, tailoring and sewing. Hostesses, gourmet cooking, beginners' golf, physical fitness, antique renovation and driver education are also offered. Qualified instructors and teachers provide instruction in two terms, usually of ten weeks each. Registration takes place in late September for classes beginning in October. Some courses are of

ten weeks' duration or less and may be repeated during the school year if a demand exists. Most courses continue through both terms.

### Should request

Credit courses in academic subjects have been offered each year, but the registration has usually not been sufficient to administer them. There remains the opportunity for anyone interested in some field of study or activity to request the principal of the adult education centre to provide such a course.

Some 1250 adult students registered in the evening classes in the County in 1973. A similar opportunity will likely be provided to those in the Erin district in 1974.

### H.S. HOLDEN

OPTOMETRIST  
36 Cork St., East  
GUELPH  
Phone 822-7150

The most productive pastures have something extra in them this summer.



Master Liqua-Supp. Nutritious, palatable, economical, versatile, labour saving.



MASTER FEEDS Agricultural Division Maple Leaf Mills Limited

MASTER FEEDS — R.R.2 GEORGETOWN  
7th line Trafalgar Road, STEWARTTOWN 877-3512 or 877-7375



WINDS WAFTED THROUGH the leaves of many trees in Eramosa Monday morning but, on Sideroad 10, the amputated limbs of beautiful hardwood maples lay in grotesquely neat parcels of firewood reminiscent of fifty years growth, cut down by the Grand River Conservation Authority in preparation for road widening plans. GRCA promises to replace the stately maples with shrubs which will line the roadway into what is proposed for a bird sanctuary.

## U. of G. will host summer games

Several local athletes will be competing in track and field events when the Annual Provincial Summer Games will be held at the University of Guelph on August 10. Over 300 regional champions from six zone field days and the districts of Nipissing and Sudbury will compete.

Champions of the Zone three Field Day held at Orangeville on July 6 will compete including Wellington County's Ladies Softball, tug-

of-war, men's tug-of-war, two-pitch, rifle shoot, men's relay and ladies' badminton teams.

This year, the 30th anniversary reunion of the Junior Farmers' Association of Ontario will be held in conjunction with the summer games, making a full weekend of activity. The Sunday re-union program will include a presentation to the Ontario Agricultural College on its 100th anniversary.

## Evergreen planting

Evergreens can now be planted successfully according to local nurseries.

CARE



CARE is people helping people

Each day CARE feeds millions of hungry families in Asia, Africa, and Latin America. But, these people hunger for more than food: the chance to help themselves.

Send your donations to:  
CARE CANADA, Department 4,  
63 Sparks Street, Ottawa, K1P 5A6.



# WOODLAND

MARKETS

ACTON, ONT.

### GROCERY FEATURES

- Targ 4 1/2 oz. **ORANGE FLAVORED CRYSTALS** Pkg. of 4 **89c**
- Maxwell House 10 oz. Jar **INSTANT COFFEE** **\$2.09**
- Canada 128 oz. **WHITE VINEGAR** **97c**
- Egan Herb & Ready Green **GARBAGE BAGS** Pkg. of 10 **89c**
- Johnson's 15.8 oz. **RAID** Fleas & Flea Control Spray **\$1.29**
- Procter & Gamble 20 oz. **CATSUP** **49c**
- Procter & Gamble 100% Veg. Oil 1 lb. **MARGARINE** **43c**
- Procter & Gamble 25 lb. **DOG DINNERS** **\$4.99**
- Procter & Gamble **DEODORANT** **\$1.09**

### PRODUCE FEATURES

- California Seedless **GRAPES** lb. **59c**
- Ontario Grown Lg. Head **CABBAGE** **2/49c**
- Ontario Grown **RADISH** Bunch **10c**
- Ontario Grown **GREEN ONIONS** Bunch **10c**
- Ontario Grown Large Stalks **CELERY** **29c**

### MEAT FEATURES

- FRESH 2 1/2 - 3 lb. Avg. **CHICKENS** L.B. **59c**
- Fresh **CHICKEN LEGS or BREASTS** lb. **89c**
- Fresh Hourly **HAMBURG** lb. **88c**
- Maple Leaf 1 lb. Pkg. **WIENERS** lb. **79c**
- Maple Leaf 1 lb. Pkg. **SIDE BACON** **\$1.29**

Open every Sunday  
9:00 a.m. - 6:00 p.m.

FAST DELIVERY SERVICE

SUMMER'S HERE— BUT THE NEED GOES ON



BE A BLOOD DONOR

ST. GEORGE'S CHURCH  
Woolwich Street - Guelph  
AUGUST 8th

2:00 - 4:30 6:30 - 8:30