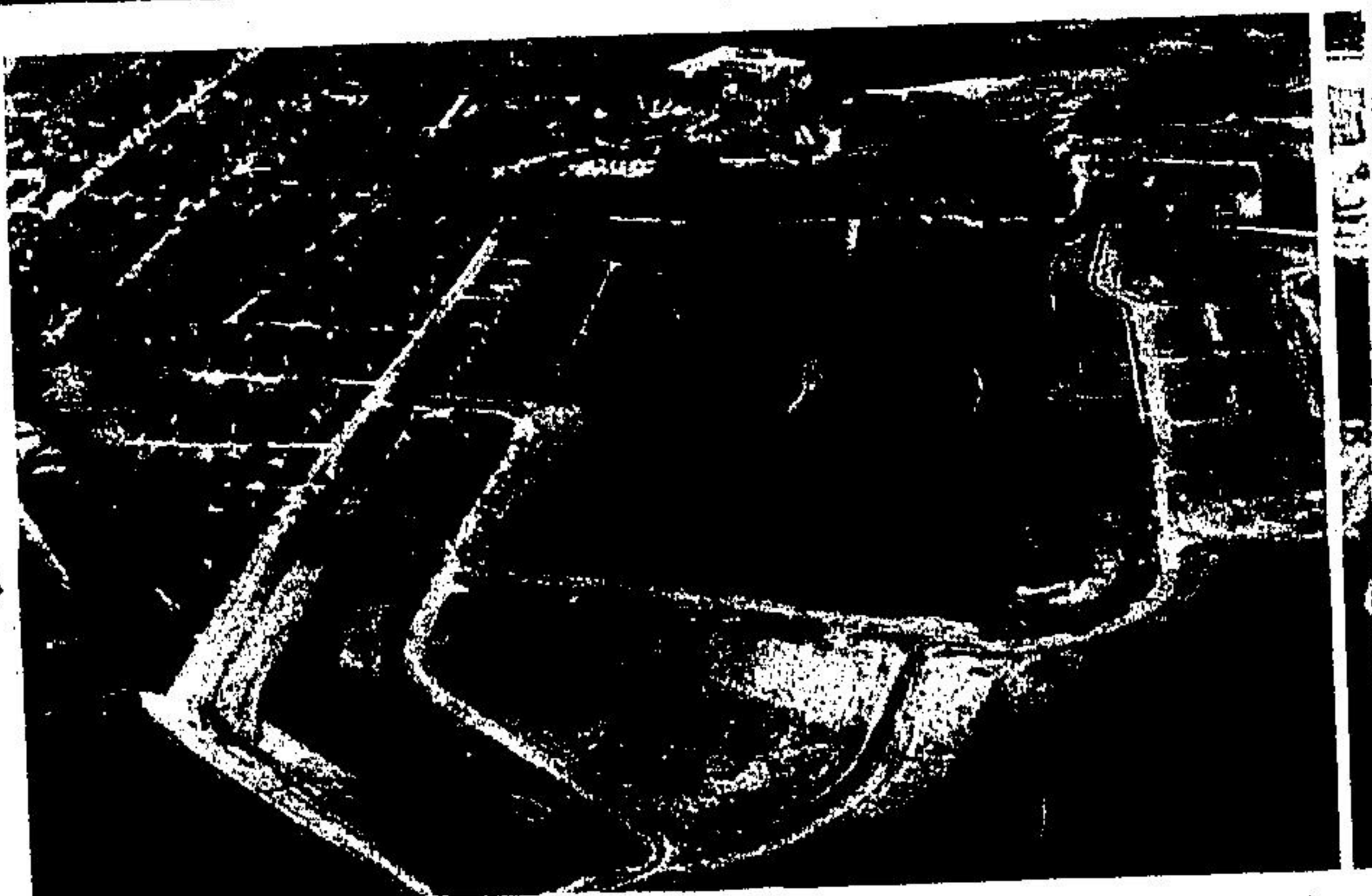


# From Th

THE NORTH HALTON communities of A different perspective when viewed while appear as scale models, traffic arteries points of focus. A recent flight by staff Greg Cross allowed us to bring readers so three major communities. Here then fro yourself in these views.

COMING IN FROM the west, Georgetown's downtown business section is seen, upper right, in this aerial photo with 7 Highway taking another tangent from the fork of the Y. Easily seen are St. John's United church, Memorial Park, Sacre Coeur church. Maybe you can pick out your own home?



CRUISING OVER ACTON'S southern boundaries by plane reveals the extent of Fairview Cemetery with the Beardmore plant in the background. The new Cobble Hill Estates subdivision and the condominium development at Kingham Hill right) are other obvious landmarks. The community's business section arcs over the top left end of the picture floating out from the wing of the photographer's plane.



MAPLEHURST CORRECTIONAL CENTRE new provincial jail now under construction! Highway 401 in Milton, is slated for opening in 1975. It will house 400 and will cost \$13,500,000. The building in the foreground is the vocational academic training area. Inmates will live in dormitory-type residences pictured at the top photo.

REC  
mar  
ness  
Geo