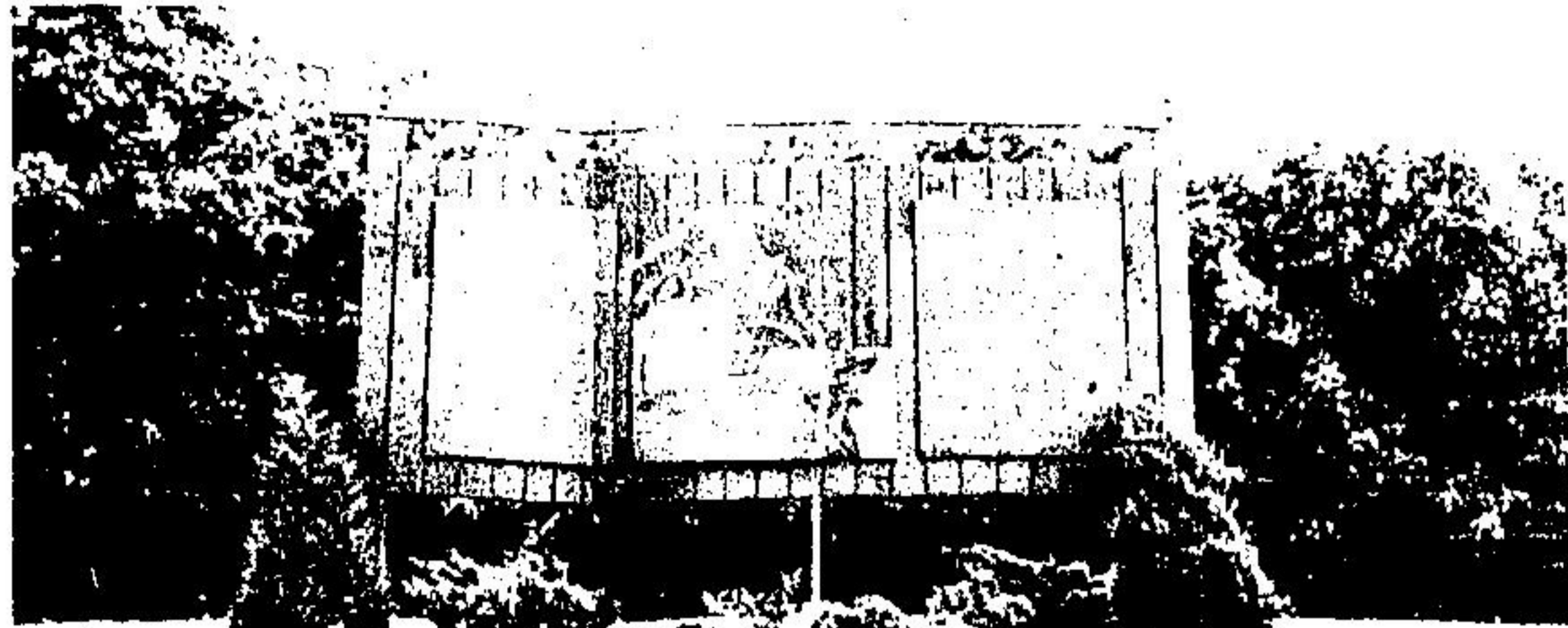


Bruce Trail

Bruce Trail touches on many of the beauties of the outdoors. On a clear day Lake Ontario is visible from the park. In its natural state it is a sight to those walking through the

(Staff photos by Steven Dills)



Rattlesnake Point Conservation Area is located on the Niagara Escarpment near Milton.



Sheltered picnic areas are located in the park for picnickers and hikers.



Views as far as the eye can see.



Following the trail at Rattlesnake.



A steep drop from the edge straight down the face of the escarpment if you venture too close.



Crevice is located along the trail where the limestone rock has been divided.



A naturally formed rock serves as a good lookout point along the trail through Rattlesnake Point.