

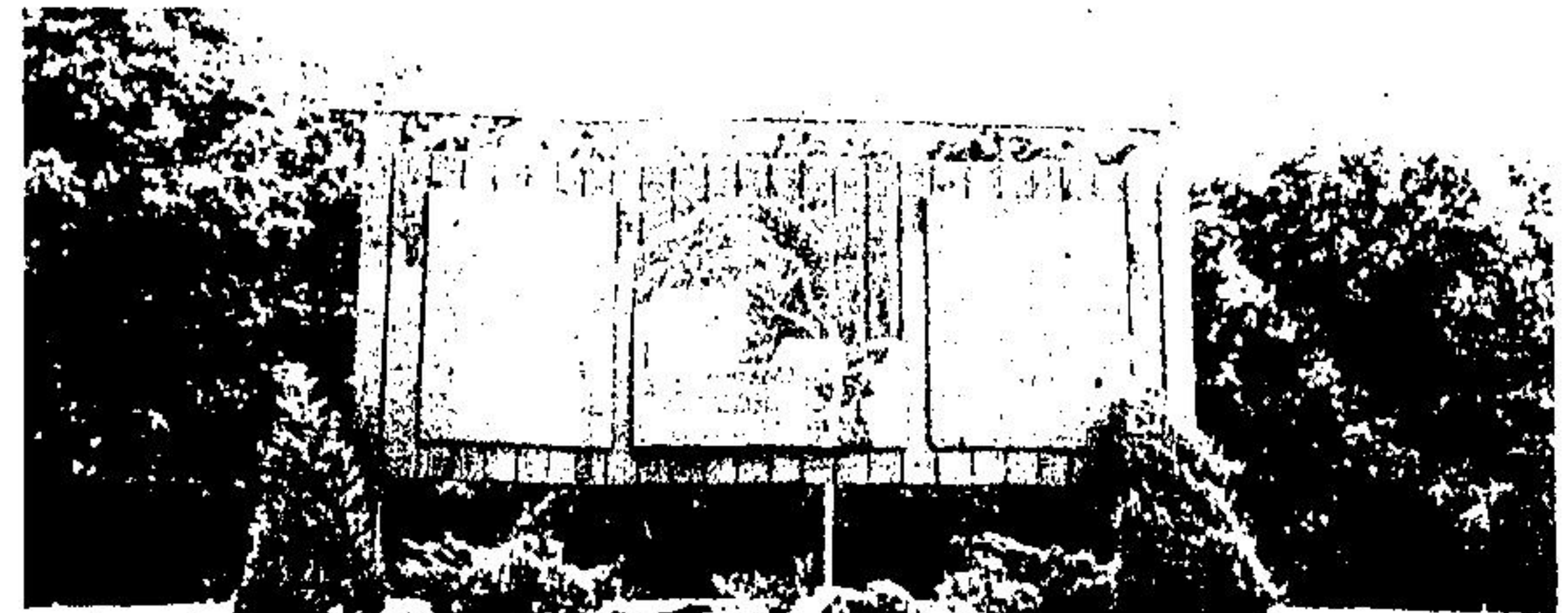
Along the Bruce Trail

Winding through the Niagara Escarpment the Bruce Trail touches on many of the area conservation parks. Rattlesnake Point reveals the beauty of the outdoors with its natural trails and high lookout points. On a clear day Lake Ontario is visible from the lookout points at the south end of the park. In its natural state the limestone formations reveal the geological past to those walking through the woods.

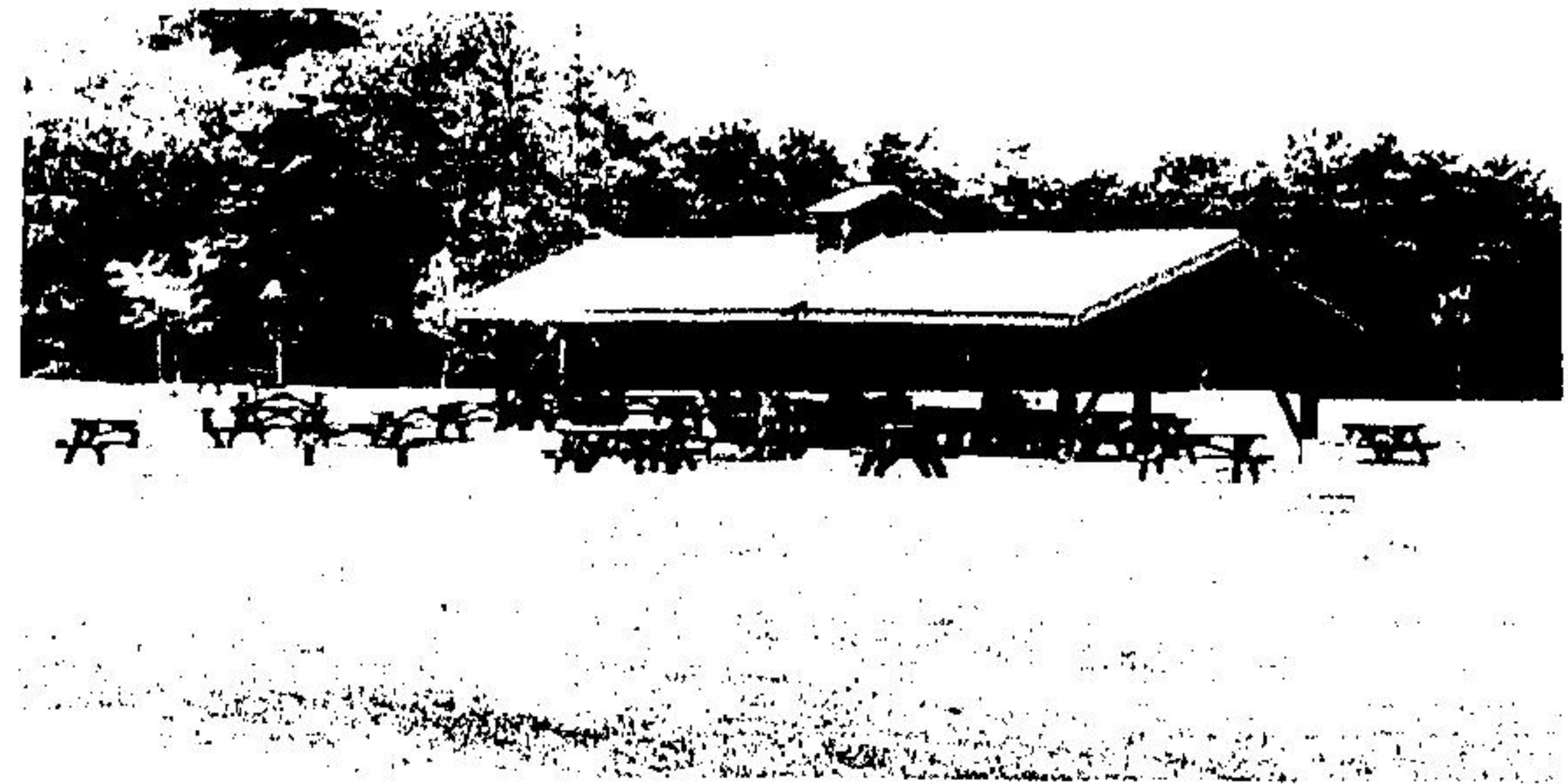
(Staff photos by Steven Dills)



The changing landscape is reflected in the fabric of fields and bushes as far as the eye can see.



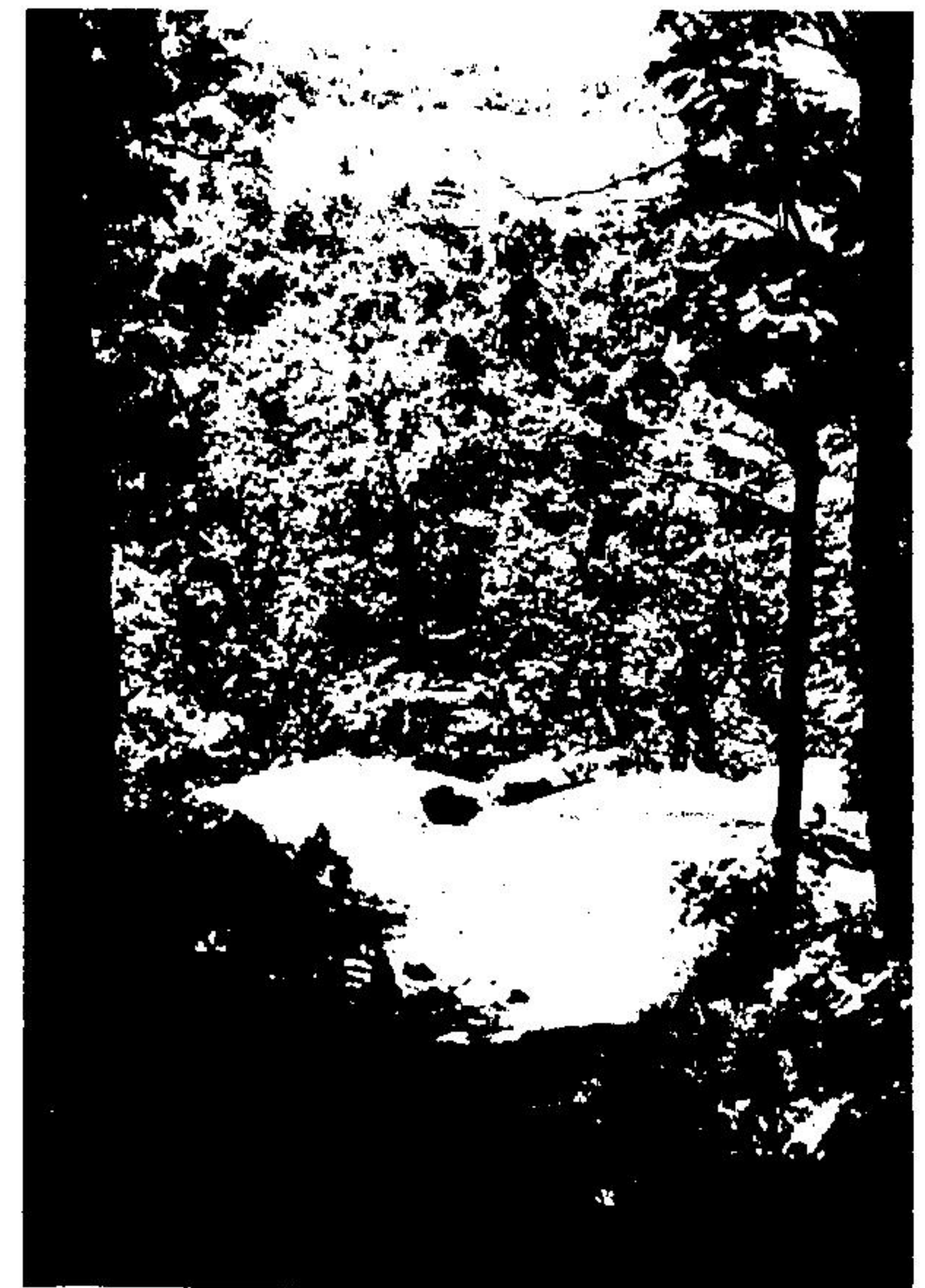
Rattlesnake Point Conservation Area is located on the Niagara Escarpment near Milton.



Sheltered picnic areas are located in the park for picnickers and hikers.



Trafalgar Lookout is one of the more scenic lookout points along the trail at Rattlesnake.



A steep drop from the edge straight down the face of the escarpment if you venture too close.

Crevice are lo

A naturally form
Rattlesnake Poi