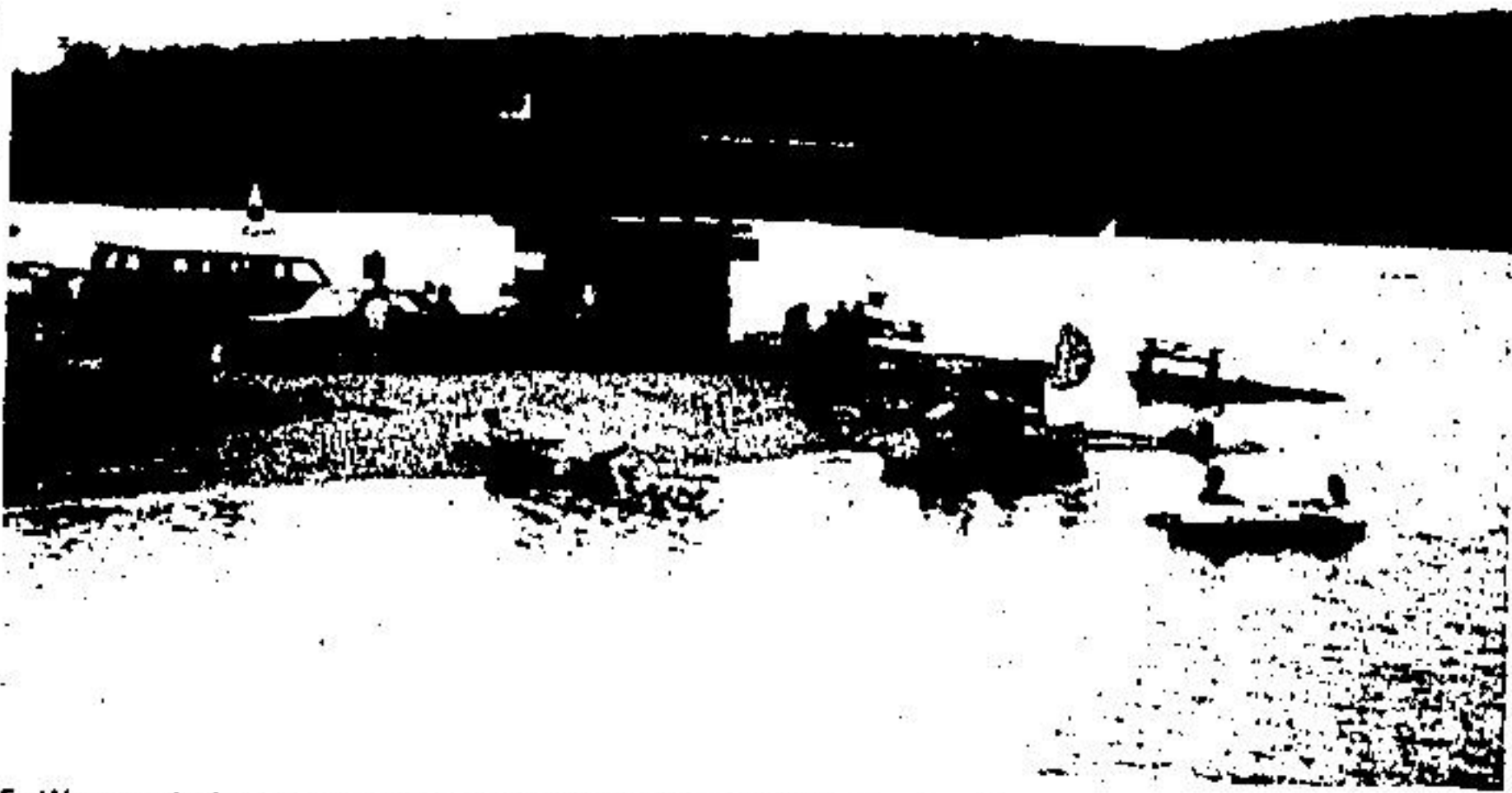




Highway 401 cuts across the centre of the picture with Kelso Lake and grounds in the foreground as seen from high on the escarpment.



Sailing and pleasure craft dot Kelso Lake throughout the boating season.



Campgrounds are open at Kelso for group camping for those who enjoy the outdoors living.

# Along the Bruce Trail

Snaking its way along the escarpment lands of Halton, the Bruce Trail touches or passes through conservation and reforestation tracts unveiling to the hiker a changing vista. Many of the areas, such as conservation lands, are available to the non hiker too and such an area is the Kelso Conservation Area bordering highway 401 just west of Milton. An 80 acre lake is set in 380 acres of rolling hills with facilities for picnicking, hiking, boating (no motors), swimming, fishing, group camping and horseback riding. The Halton Museum is also located in the park with its fine collection of pioneer furnishings, tools and craft items.

(Staff photos by Steven Dills)



Jagged limestone carved by generations of wind and weather add a dramatic outcropping from the Niagara Escarpment.