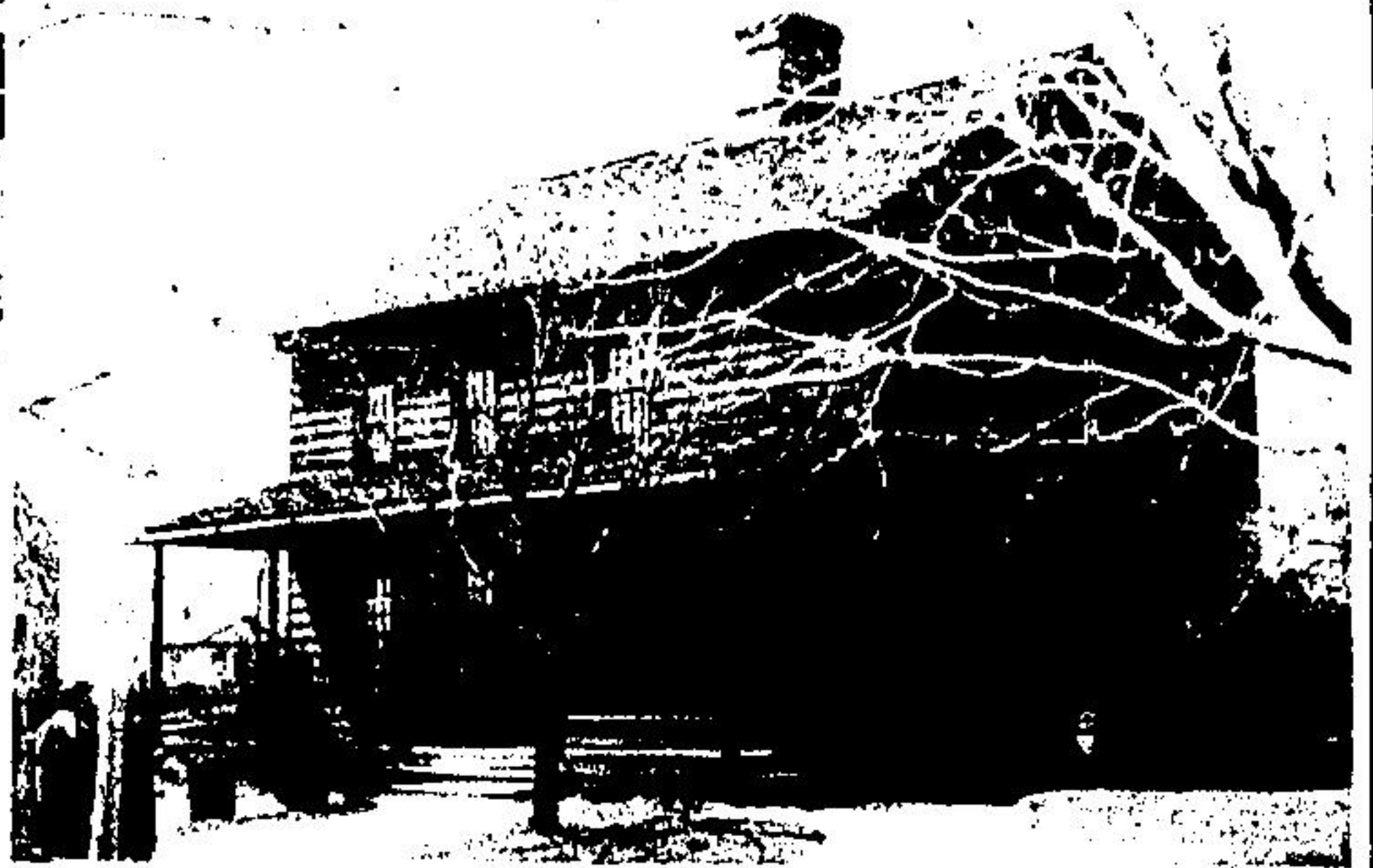


There's a difference

There's a difference in the real estate being offered today and some of these examples representative of pioneer times. This selection may be found at Black Creek Pioneer Village operated by the Metropolitan Region Conservation Authority near the junction of Steeles Ave. and Jane St. in Toronto. The conveniences have changed too and shopping is in a different style as a visit to the village will reveal.



Half Way House is an Inn of the 1850 period.



A pioneer's second log house, the exterior is covered with horizontal siding. It was built in 1832.



Early log construction is shown in this example of pioneer living.



An artisan's house this was built in the 1850's. The shop at the side was converted to a kitchen when the business grew.



A study in contrasts is the pioneer privy, the sturdy stone mill and in the distant background the brand new high rise apartment building bordering the pioneer village site.



The Laskay Emporium was a general store. It was the hub of a pre-Confederation crossroads community. Today its shelves simulate the era.