



Recreation advisory committee re-established with same faces

Six former members of Acton parks and recreation committee met formally again Monday night as the newly-instituted recreation advisory committee for ward one of Halton Hills.

The six were the only ones who had applied, at Halton Hills council's request, and they agreed the figure of seven would be better. They're

going to contact others and hope to add the seventh. Halton Hills recreation director Doug Collison's was the only new face at the meeting, and he outlined the changes in the setup.

Same chairman
The group elected Diane Spielvogel as chairman; she was chairman of last year's parks and recreation committee, appointed by Halton Hills council, met Monday and elected last year's parks and recreation committee chairman Diane Spielvogel as chairman again. Other familiar faces from past boards are, back row, Ed Wood, Brendan Ahearne and Gil Malcolm. With Mrs. Spielvogel in the front row are Halton Hills recreation director Doug Collison and vice-chairman Barry Inscow.

mittee when it was dissolved due to the formation of regional government. Vice-chairman is Barry Inscow, and non-recording secretary Brendan Ahearne. (Mr. Ahearne has been off the board for a couple of years but rekindled his interest in park facilities and applied for a seat on the committee.)

Others present were Ed Wood and Gil Malcolm of last year's committee and Lou Bonnette was absent. Arena manager, Harold Townsley attended both this meeting and a fair committee meeting.

Mr. Collison explained someone from his recreation staff will attend meetings to take minutes.

Meeting dates are set for the second Thursdays with four a quorum. The advisory committee is unpaid.

A similar committee has been set up in Georgetown although Mr. Collison pointed out almost all the members there are new to the job. The two committees will exchange minutes and joint meetings with Georgetown and Esqueping advisory committees will be set up.

Differences
This new group will operate much differently, the recreation director told the five members. It will be "advisory" to the council and recreation and parks departments. Main change is that it will have no authority to approve expenditures or incur debt. Before, finances were a major function.

The group does not have the authority to direct staff, or to institute policies for the recreation and parks departments.

They will suggest policy, and look over what is suggested. "The only policy making body is council," Mr. Collison stressed.

Specific areas
Advice will be required in specific areas. First is in

establishing programs to meet the needs in ward one. ("Hopefully, our staff will be increased when we prove the need," added Collison.)

Second is to give advice on policies for efficient operation. Third is the program of facility improvement, maintenance and development of the arena, fourth is the establishment and development of the administrative structure which the committee can work under. And fifth, identifying other areas the committee can have involvement in.

"It may appear you have no power, but the recreation department will likely concur unless it's in conflict with council," Mr. Collison felt.

It's unfortunate it's Acton centennial year, the new recreation director observed. Maybe it could have been bigger if we could have got at it a two day celebration.

Georgetown people could have assisted.

Direct, joint and liaison programs were all reviewed.

His grassroots
Mr. Collison especially asked the members to be the "grassroots" since he does not live here, but in Georgetown.

The Acton Free Press

ACTON, ONTARIO, WEDNESDAY, MAY 1, 1974
SECOND SECTION

town. "We have a geographical problem," he admitted. "We don't get to Acton unless there's a reason."

He went over the route of procedure, from council committee to general council. Anything recommended at Monday's meeting would take until the first Tuesday in June to be approved by Halton Hills. "Bureaucracy and red tape," muttered Inscow.

On Mr. Collison's staff is program co-ordinator Glen Gray. There are three on Acton arena staff and four at Georgetown. An extra person in each place is proposed.

Works
Another change is that the works department is responsible for labor in the parks. Town men, for instance, will have to look after the park and ball diamonds.

Discussion was initiated on prime ice time, tennis courts, budgets.

Halton Hills council has asked arena rates be the same in Acton and Georgetown and various possibilities were debated. Barry Inscow felt increased rates, from \$8.50 an hour for ice time up to \$18 over three years, would prevent some groups from using the arena.

power, but the recreation department will likely concur unless it's in conflict with council," Mr. Collison felt.

It's unfortunate it's Acton centennial year, the new recreation director observed. Maybe it could have been bigger if we could have got at it a two day celebration.

Georgetown people could have assisted.

Direct, joint and liaison programs were all reviewed.

His grassroots
Mr. Collison especially asked the members to be the "grassroots" since he does not live here, but in Georgetown.

business and moved to his present location from Churchill Rd. last fall to put it into operation.

The Stahlmanns will be open from 5.30 to 9 p.m. every evening and from 8 to 9 p.m. on Saturdays and Sundays. Mr. Stahlmann, with his wife Janice and their two children Jason 4, and Stacey 2, plans to run the centre as a family affair.

At Guelph
A former supervisor in the horticultural section of the parks department of Mississauga, Gus is, at present, superintendent of parks for

the City of Guelph. Ambitious, he hopes to eventually make the centre a full-time operation and to conduct his own adult classes in garden planning and landscape architecture. He has conducted similar classes in Mississauga and, said Janice, "They were very successful."

Having lived in the Acton district for the last three years the couple feel they are already established in the community. Their two weeks of opening are proving they are right as many of their customers are Acton residents with only a few dropping in as transients.

LANDSCAPE DESIGN will be one of the important features of the newly opened Halton Hills Garden Centre as well as shrubbery sales and regular garden supplies. Operating the new business is Gus Stahlmann, and seen at the centre with their four year old son Jason, is Janice, his wife who will assist.

Landscape architect opens new garden centre



LANDSCAPE DESIGN will be one of the important features of the newly opened Halton Hills Garden Centre as well as shrubbery sales and regular garden supplies. Operating the new business is Gus Stahlmann, and seen at the centre with their four year old son Jason, is Janice, his wife who will assist.

WITHOUT ADVERTISING YOU WOULDN'T KNOW

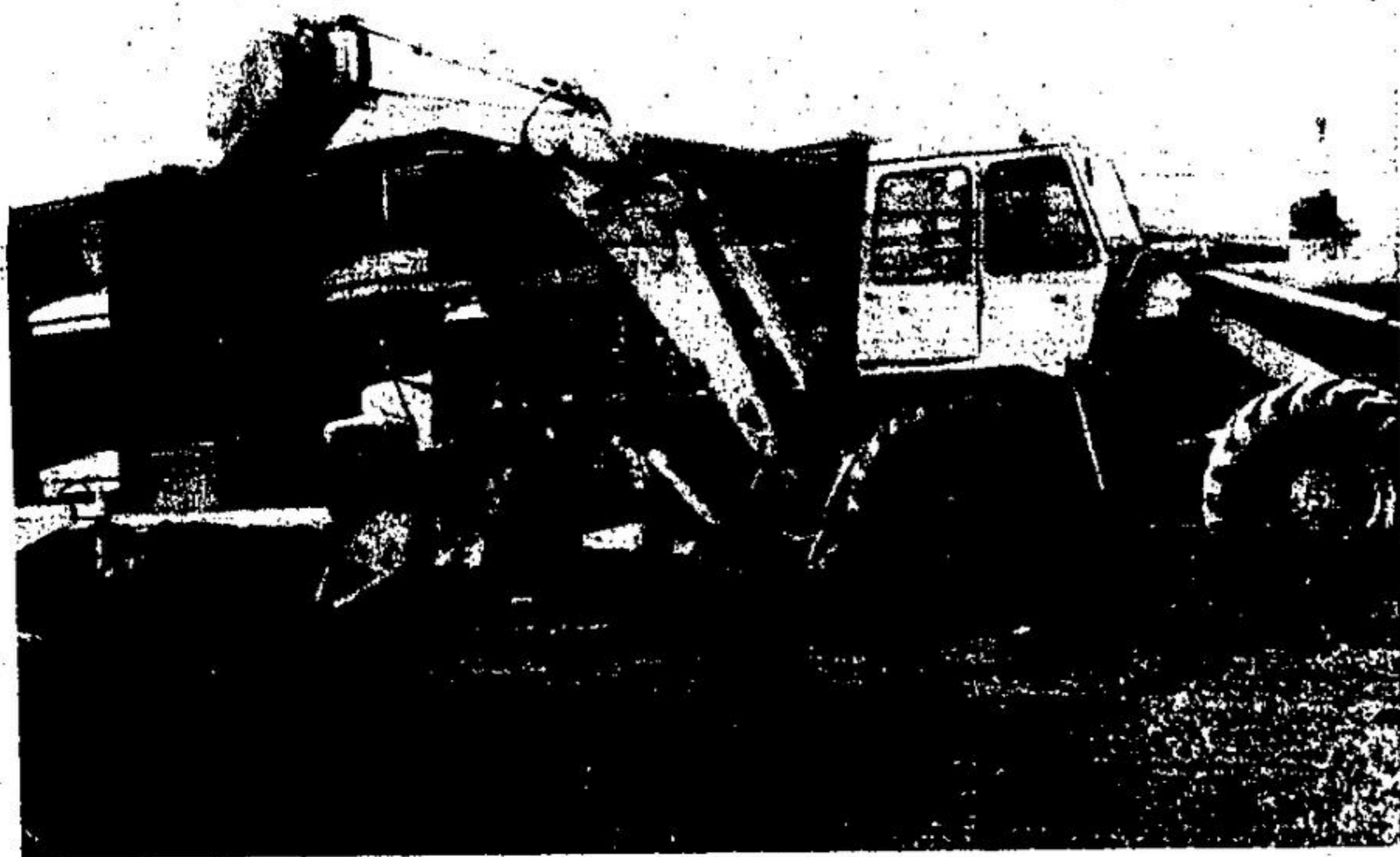
for
Quality & Low Price

Visit The
CARPET BARN
In the old Cdn. Tire Building
Or Phone
Tom, Al or Jeff at
877-9896
26 GUELPH ST. GEORGETOWN
"BARGAINS BY THE YARD"

WHEN WILL CONSTRUCTION OF THE POOL START??

ANSWER

IT'S STARTED!



WHEN WILL IT BE COMPLETED?

ANSWER

SUMMER OF '74"

Your Community Swimming Pool Is Being Sponsored by the Lions Club of Acton.

SUNDAY MAY 12th IS MOTHER'S DAY

GIFTS FOR MOM

Give her a gift from Hinton's

CHOOSE FROM THE FOLLOWING SUGGESTIONS:

- TOILET SETS • BOXED STATIONERY
- BONE CHINA CUPS & SAUCERS • SEWING BASKETS
- PICTURES • LINGERIE
- BLOUSES • SWEATERS • SLACKS
- PANT SUITS • SLIPPERS • HANDBAGS
- COSTUME JEWELLERY • PANTY HOSE
- APRONS • BOXED TOWELS • DRESSER SETS
- LUGGAGE • PYJAMAS
- NIGHTGOWNS • CAMERAS and FILM • ETC.

Refrigerators, dehumidifiers, water heaters, stereos, radios, hairdryers, toasters, irons, can-openers, slicing knives, electric blankets, food mixers, blenders, kettles, coffeemakers, fry pans, heating pads, vacuum cleaners, floor polishers.

- LADIES WATCHES—PENDANT OR WRIST \$12.99
- ARTIFICIAL CORSAGES NEATLY BOXED
- POTTED PLANTS, CUT FLOWERS AND AFRICAN VIOLETS
- ROSE BUSHES and FLOWERING SHRUBS

MOTHERS' DAY CARDS AND FOLDERS BY "CARLTON"

SEE OUR BEAUTIFUL SELECTION OF MOTHERS' DAY GREETING CARDS FOR A THOUGHTFUL REMEMBRANCE Priced From 15c to \$3.00

- BOXED CHOCOLATES FOR MOTHER**
Specially Packaged
SMILES'N CHUCKLES—
ROWNTREES—
BLACK MAGIC—DAIRY BOX—
NEILSON'S
BLUE BIRD IMPORTED TOFFEES—
TURTLES

Hinton's 5¢ to \$1 Store
The store that gives you a bigger choice better quality and lower price