

Is the pig on Halton crest really the Golden Fleece?

Is the pig on the Halton County crest really the golden fleece, legendary treasure sought by the ancient Greeks?

According to Eria Brittain, curator at the Halton county Museum the original drawing in the upper right-hand corner of the shield was supposed to be the fleece the Argonauts of Greek legend sought. This would help to explain the ring in the pig's back which has always been a mystery.

She believes some artist took liberties with the crest at some point in the county's history and turned the representation of the fleece into a pig. This created some problems for the new region of Halton when police in the south of the county objected to a pig being on their shoulder flash in the event a similar region crest is to be used on uniforms.

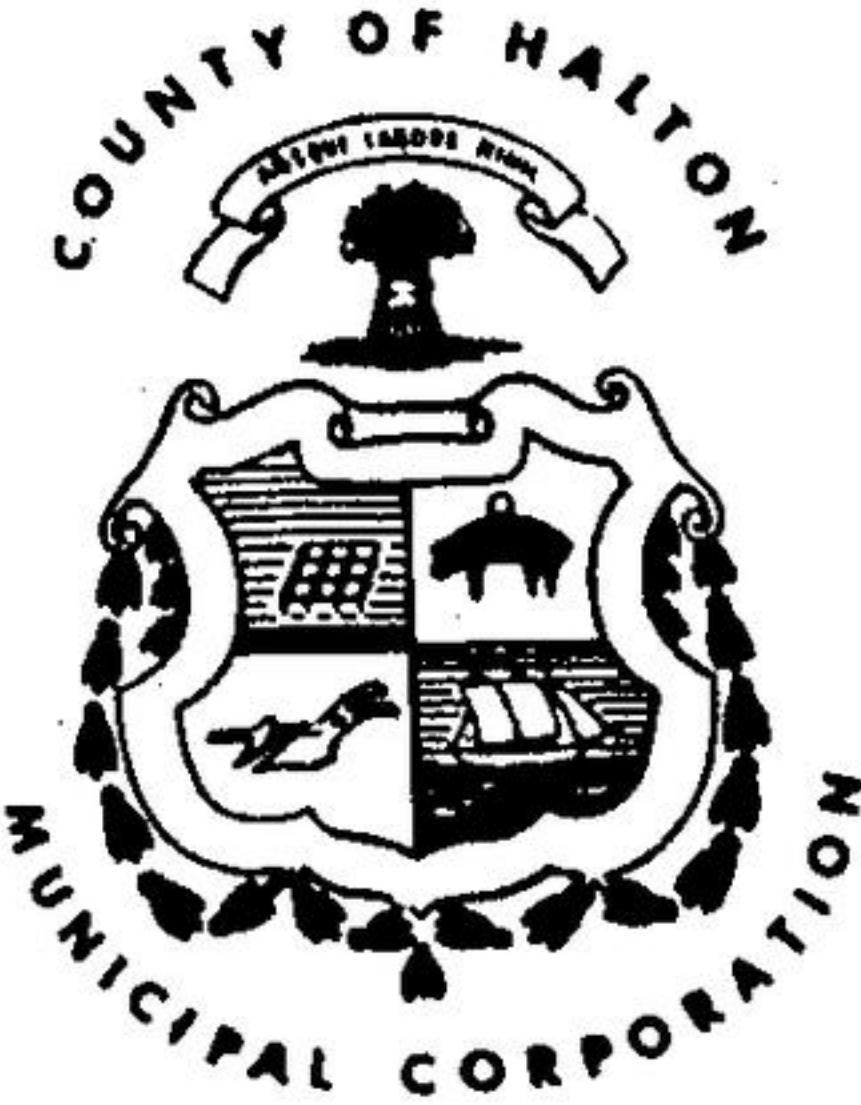
Partly because of the police complaint the county has put up a \$300 cash prize for a contest to design a new crest for the Halton region.

The present crest used by the county is older than the county itself, being rediscovered in 1960 after a more mundane one had been used for several years. The switch came to light when county clerk Garfield Brown noticed the crest the county was using wasn't the one used on the first county by-law, which was passed by the provisional council that preceded Halton's first county council in 1854.

He searched the records back in 1960 but couldn't find out when or where the less striking crest was adopted. So with council's permission engravings and seals of the original crest were made and have been in use since.

The crest features a shield divided into four sections. Each of them was believed to represent one of the then four townships. Top left, harrows was believed to represent Nassagaweya; lower right, a sailing schooner was thought to represent Trafalgar township and the masts grown there.

It is believed the walking plow in lower left represented Nelson township and the hog with the ring through its back



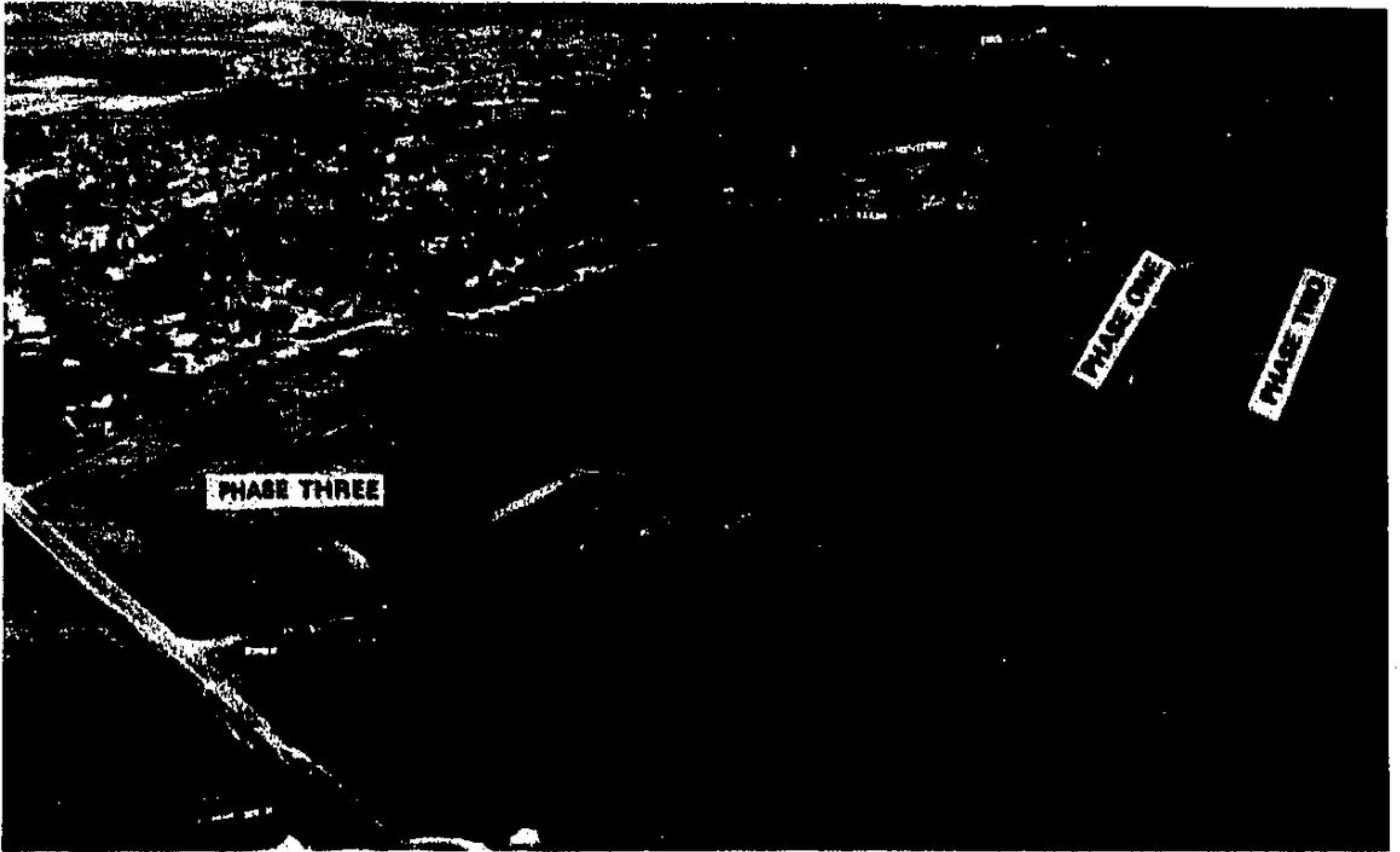
represented the livestock of Esqueving, but the ring was a mystery.

Around the shield is an oak leaf cluster probably representative of the White Oaks for which the south of the county was famous. Above the crest stands a sheaf of wheat representing agriculture in the county in general.

The crest which crept into the picture mysteriously featured different symbols. Upper left was a maple leaf, upper right a sheaf of wheat, lower left a walking plow and lower right a large oak tree. Above the shield is a lion with a broken lance.

Eria Brittain believes many new things could be incorporated into the region's crest because Halton has changed from the agricultural county it once was. She suggests a horse might be appropriate to designate Nassagaweya, famous for the Mohawk Raceway, for instance.

The contest for a new crest for Halton has a prize of \$300 which it is hoped will produce something dramatic to represent the four areas of the new region. — Halton Hills, Milton, Burlington and Oakville.



AERIAL VIEW OF THREE PHASE ACTON RESIDENTIAL DEVELOPMENT

The Acton Free Press

NINETY-NINTH YEAR NO. 24

ACTON, ONTARIO, WEDNESDAY, DECEMBER 5, 1973

SECOND SECTION

New Cobble Hill Estate houses sold before basements built

The new land-lease home purchase program being instituted in the Cobble Hill Estates project is already showing amazing acceptance according to Alf Berry of Kingham Hill Estates in Acton.

Fifteen homes have already been sold with the sales based on ground plans, as models have not, as yet, been built.

"Basements are in," said Mr. Berry, "but models will not be completed for public inspection until sometime in February."

In the meantime sales have been extensive with many of the purchasers coming from the Toronto and Burlington areas. Three-bedroom, Tudor style bungalows will sell for \$27,955 with three other house

styles being offered under the plan featuring such luxuries as single and two-car garages, broadloom throughout, family rooms and fireplaces, two washrooms, deluxe vanities, and up to 1,404 square feet of living area.

Acceptance of the Ontario Government's H.O.M.E. land-lease plan by home buyers and mortgage lenders was the inspiration for the Northdown-Alteo Homes in Cobble Hill Estates project.

Under the plan the house buyer will be able to purchase his house and assume a lease on the lot at a set monthly rental based on an amount which is nine percent per year of the current market value of the lot.

Lease for 50 years

The lease continues for a term of 50 years, as under the HOME program. However, in the event of resale, under the Northdown-Alteo plan, the rent remains unchanged.

According to Mr. Berry the home buyer has the option of purchasing the land at any time after the first five years at the same cost value of the day the home was originally purchased. This way a home buyer, under the Northdown-Alteo plan, knows from the date of the home purchase what the cost of his lot will be if he decides he wants ownership.

There are advantages to purchasing through the Cobble Hill Estates plan, according to Mr. Berry. Down payments are lower because no down payment is required on the land-lease package. Accordingly a 10 percent down payment on the \$27,955 house mentioned, excluding the value of the

land would be \$2,795, whereas a ten percent down payment on \$47,955 would be \$4,795.

Monthly carrying costs are also likely to be lower because they do not include amortization costs of the debt of the land portion of the sale.

Three phases

The Kingham Hill Estates

Corporation has incorporated a building plan whereby the entire project is divided into a series of steps and referred to as phase one, two and three.

At the present time building of the new homes has been held up considerably due to an acute shortage of various materials. Phase one, based

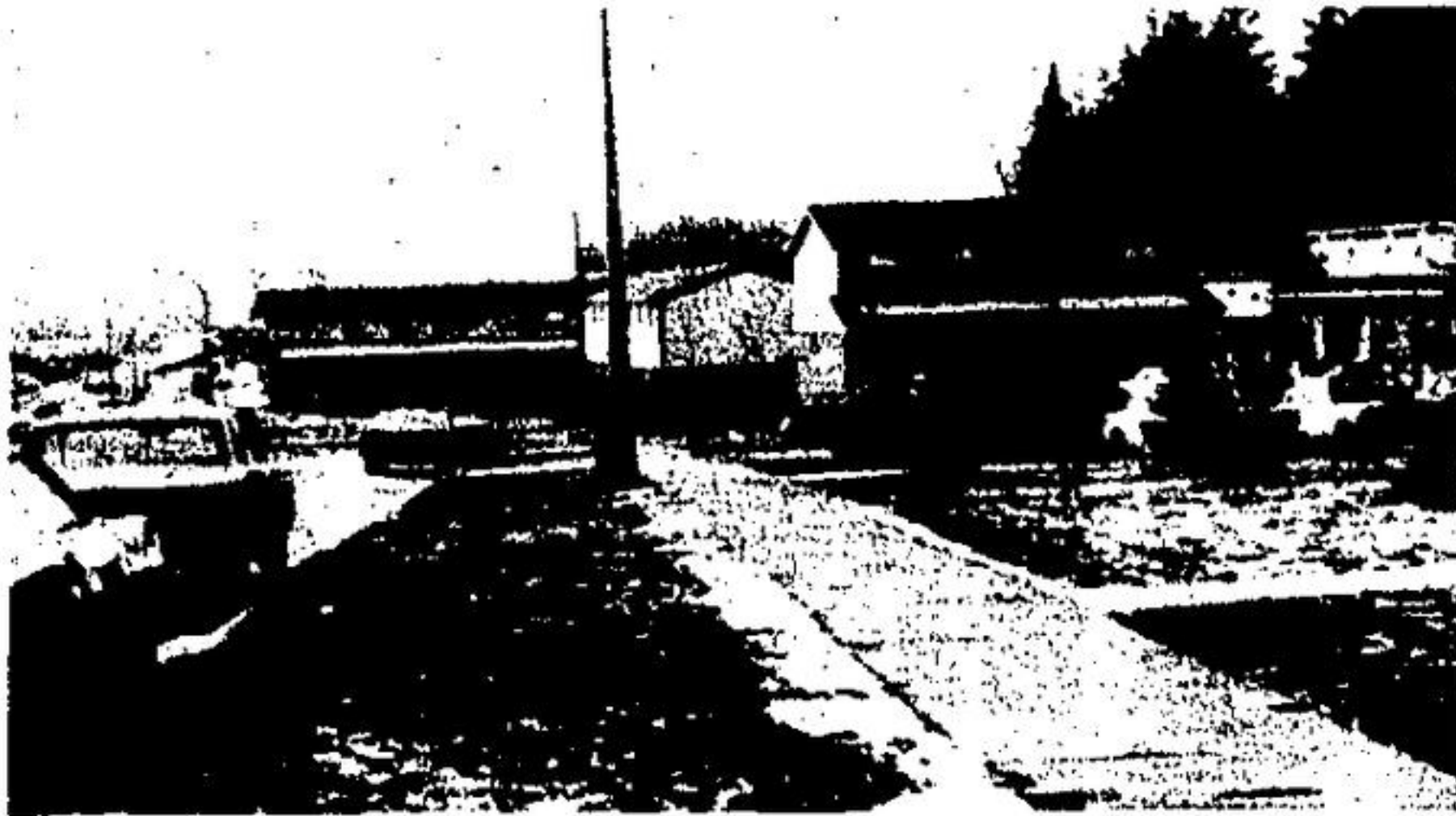
on government subsidized planning is now completed and tenants have taken up residency.

Phase two, with NHA guaranteed loans is only three-quarters completed although almost all homes are sold.

"Hopefully," said Mr.

Berry, "some residents could be moving in this weekend depending on final inspections."

The land lease sales of phase three will apply at the present time only to the detached single family homes. "But," said Alf Berry, "it is anticipated the semis will be included later."



TOWN HOUSES FIRST PHASE OF DEVELOPMENT

Escarpment Commission sets up shop in Georgetown on Monday

The Niagara Escarpment Commission moved into headquarters at 232 Guelph Street, Georgetown, Monday, but are still by no means settled.

The Commission has taken over the top floor and the basement level of the building at Mountainview and Guelph Street.

Amid the construction of offices six employees are now at work. A total of 35 will be employed in the near future, mostly secretarial help and planners.

Heading up the Commission is George R. McCague, ex-mayor of Alliston, who resigned in September to take the job. His secretary is Mrs. Susan Herrold of Acton. Director is James W. Gilbert, of Newtonville, and his secretary is Mrs. Carolyn Jameson of Georgetown.

Vern Rankin of Ballinacree is supply and services officer, and Walter W. Gowling of Cambridge is manager of information services. Special advisor is John Spender of Toronto and the receptionist



GEORGE R. McCAGUE
Chairman of Niagara Escarpment Commission

is Miss Janette Gray of Georgetown.

mission is supposed to complete the work within three years, then will be phased out.

Pulls his own ticket

Would you believe Tom Hill, mayor-elect of Halton Hills, did it again? He pulled his own ticket on the fifth draw at the opening of Bramalea Realty, and won a \$25 voucher good at Zellers.

The mayor immediately donated it to the Georgetown Lions Club Christmas Fund. This is his winning year. On top of winning the election which made him mayor of the north, he won \$400 in the Georgetown Lions Club Grey Cup draw. It is rumored he is buying sweepstakes tickets, while he is on a winning streak.

Mayor-elect Hill drew the ticket of Vivian Mills, 16 Weber Drive, making her the winner of the top prize in Bramalea Realty's draw. Mrs. Mills won a \$200 voucher.

All the prizes are redeemable for merchandise at Zellers.

Need a lot from a bank? TD can give you a great deal.

Look us over. And see how our Personal Service Plan gives you just about all the banking services you'll ever use for \$2.50 a month. No matter how often you use them.

Instant Personal cheque cashing

Up to \$100 at any TD branch in Canada.

Unlimited cheque writing

Write as many cheques as you like with no additional charges. And the Custom cheques are free.

TD Coverdraft: N.S.F. Cheque Protection

Relax. Your cheques are guaranteed up to the available credit limit of your TD Chargex card.

Reduced Interest on TD Cash-flow Loans

You get a preferred rate on most Personal Installment Loans.

No additional service charges for:

Travellers Cheques
Money Orders & Drafts

Utility Bill Payments where normally accepted

Fund transfers between branches

Bank-by-mail
TD Cash-builder
Single charge for joint account!

Sign up today. Once your application is approved, you'll get free chequing privileges until Feb. 4, 1974 when the full plan starts.

Safety Deposit Box Discount
Save \$2.50 on safety deposit box rental.

TD Chargex Card
Honoured at more than one million establishments and thirty-one thousand bank branches in eighty countries around the world and in Canada.



TORONTO DOMINION
the bank where people make the difference

THE CORPORATION OF THE TOWN OF ACTON

NOTICE To Residents

As you are all aware 1974 our Centennial Year is fast approaching. In the early part of 1973 Council appointed a 10-member Committee to organize and co-ordinate activities to be carried out in 1974. Due to lack of public response this Committee, along with the original Centennial Commission, has been dissolved.

Therefore, the Council of the Corporation of the Town of Acton urges all interested individuals, clubs, groups, etc. to undertake Centennial Celebrations suitable to their own organization(s).

Mayor L. A. Duby

New health insurance office serves district residents

A new Ontario Health Insurance Plan office is now open to serve residents, physicians, and practitioners in the following Counties:

Dufferin	Peel
Halton	Simcoe
Muskoka	York (excluding Metropolitan Toronto)
Ontario	

The new Mississauga District Office is located on the fifth floor, UNIVAC Building, 55 City Centre Drive, Mississauga.

Mailing address:
P.O. Box 7020
Mississauga
L5A 3M1

Telephone:
(416) 275-2730

Office hours:
8:00 a.m. to 4:30 p.m.
Monday to Friday



Ontario
Ministry of Health