

Dragway's presence could influence twp. election

The Acton Free Press.

SECOND SECTION

ACTON, ONTARIO, WEDNESDAY, OCTOBER 28, 1970

Ninety-Sixth Year. — No. 18



ACTION AT THE dragway brings the crowd up as a funny car leaves the starting gate. These "funny" cars can reach 200 miles an hour within a quarter mile from a dead stop start.

Noise big complaint from ratepayers

Photos by Bill Stuckey

For the first time in history the usually serene Esqueving township elections may be influenced by noise which does not emanate from a political figure. Esqueving ratepayers, within earshot of the brand new Golden Horseshoe Dragway, have banded together in a ratepayers' association to challenge the present incumbents of council. They charge that the present administration did not represent their interests when they allowed establishment of the dragway.

The most vocal critic, Peter Bowman, a resident of the Sixth Line next door to the dragway, intends to run for office, too. He says the township should be operated for the benefit of the township not for "outsiders", inferring the dragway derives its support from outside the township. Mr. Bowman has sat in for almost all the township council meetings since construction started on the dragway, even prior to the time when the knowledge of the project was limited to skinned pastures.

Meanwhile, the dragway completed its first year of operation despite criticism from its neighbors.

Never the same. There is no doubt, however, that the serene countryside in that part of Esqueving will never be the same again. The roar of engines as cars race down the asphalt speedway during racing months makes a startling comparison for residents used peaceful fields where the bawl of a calf could disturb a summer afternoon.

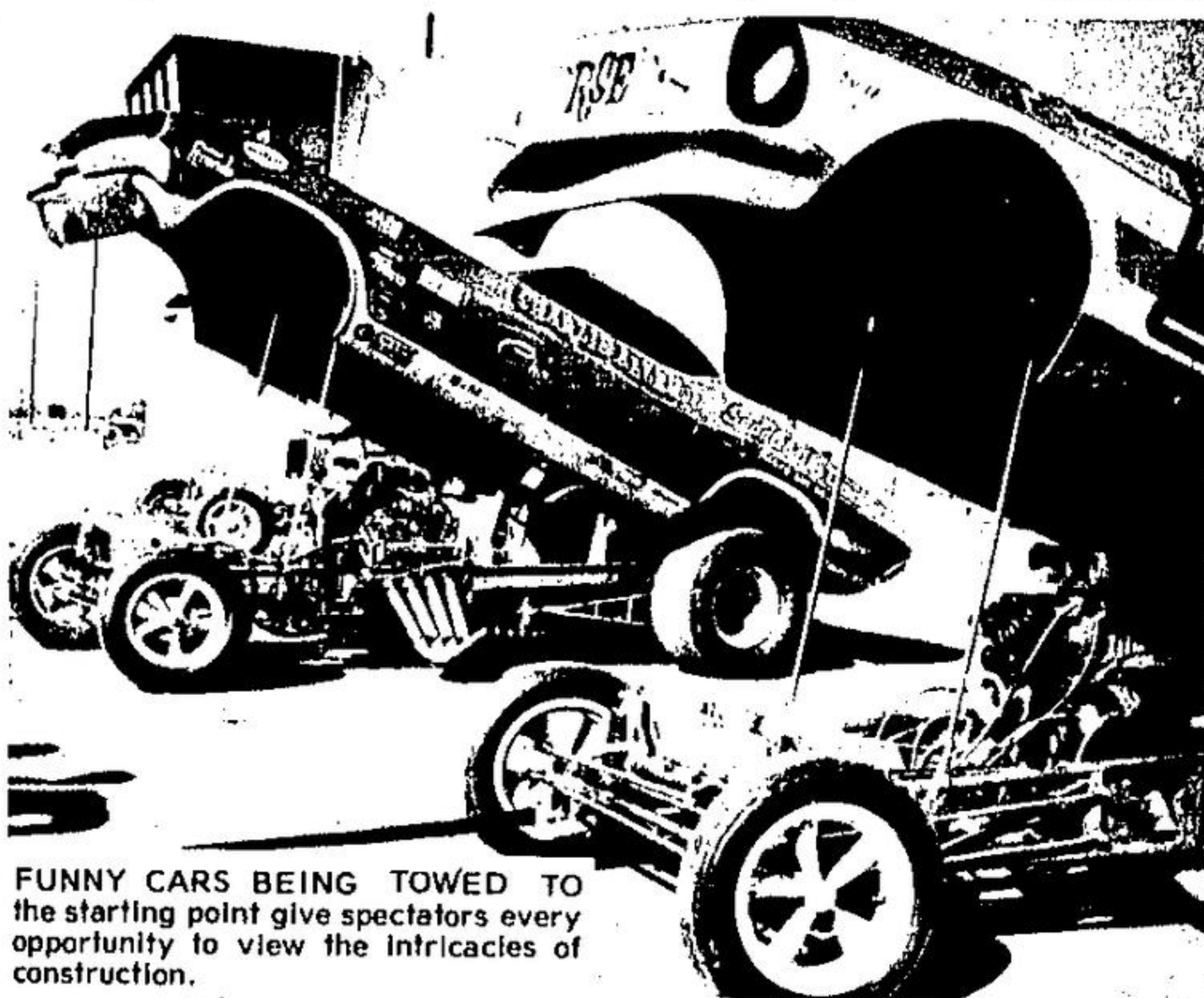
Although it is noise that bothers residents of the north end of the township most, the new ratepayers' association contends the basic challenge they are throwing out to the present council of the township is the attitude towards planning in the township.

One member of the ratepayers has said that if the township had heeded requests from the Department of Municipal Affairs to zone the land there wouldn't be objections now.

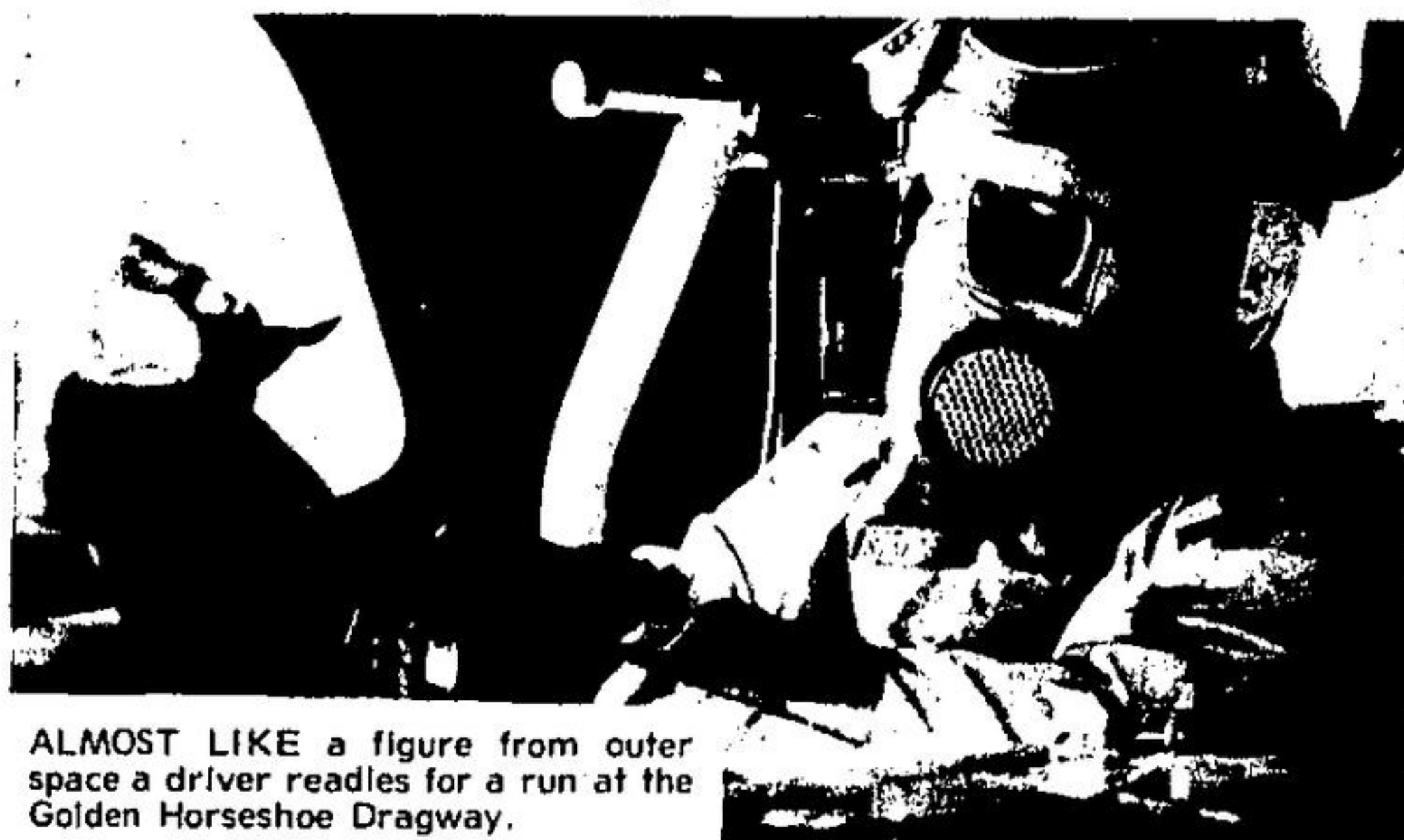
Legal advice. Esqueving township council's attitude towards the Golden Horseshoe Dragway has been dictated partly from legal advice that there was no way to stop the dragway from being established. However, in recent months they have taken a harder line regarding alleged contraventions of township bylaws by the drag strip.

Disturbed by the number of complaints over noise from the dragway, council asked the proprietors to heed by-laws, or they could go as far as suspending the licence.

There are other residents of the



FUNNY CARS BEING TOWED TO the starting point give spectators every opportunity to view the intricacies of construction.



ALMOST LIKE a figure from outer space a driver readies for a run at the Golden Horseshoe Dragway.

north end of the township — a minority, probably — who feel the drag strip has been one of the best things to happen in the area for a long time.

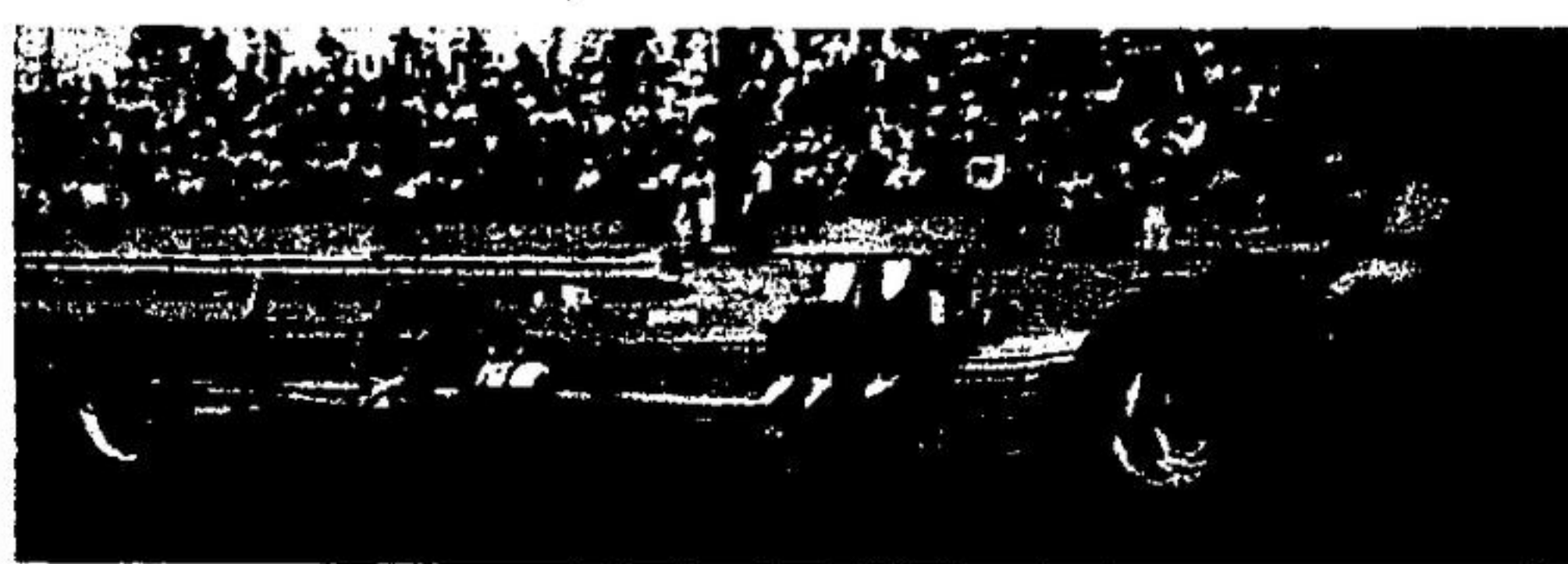
Outlet for drivers. Although few openly support the dragway, some residents of the township do not disapprove of it, either. They believe it is an outlet for youthful driving spirits better appressed on the drag strip than on the township roads.

However, critics point out that few drivers from this part of the province compete in the events. They contend the dragway is simply an arena for competitors from the city and spectators are drawn mainly from Toronto.

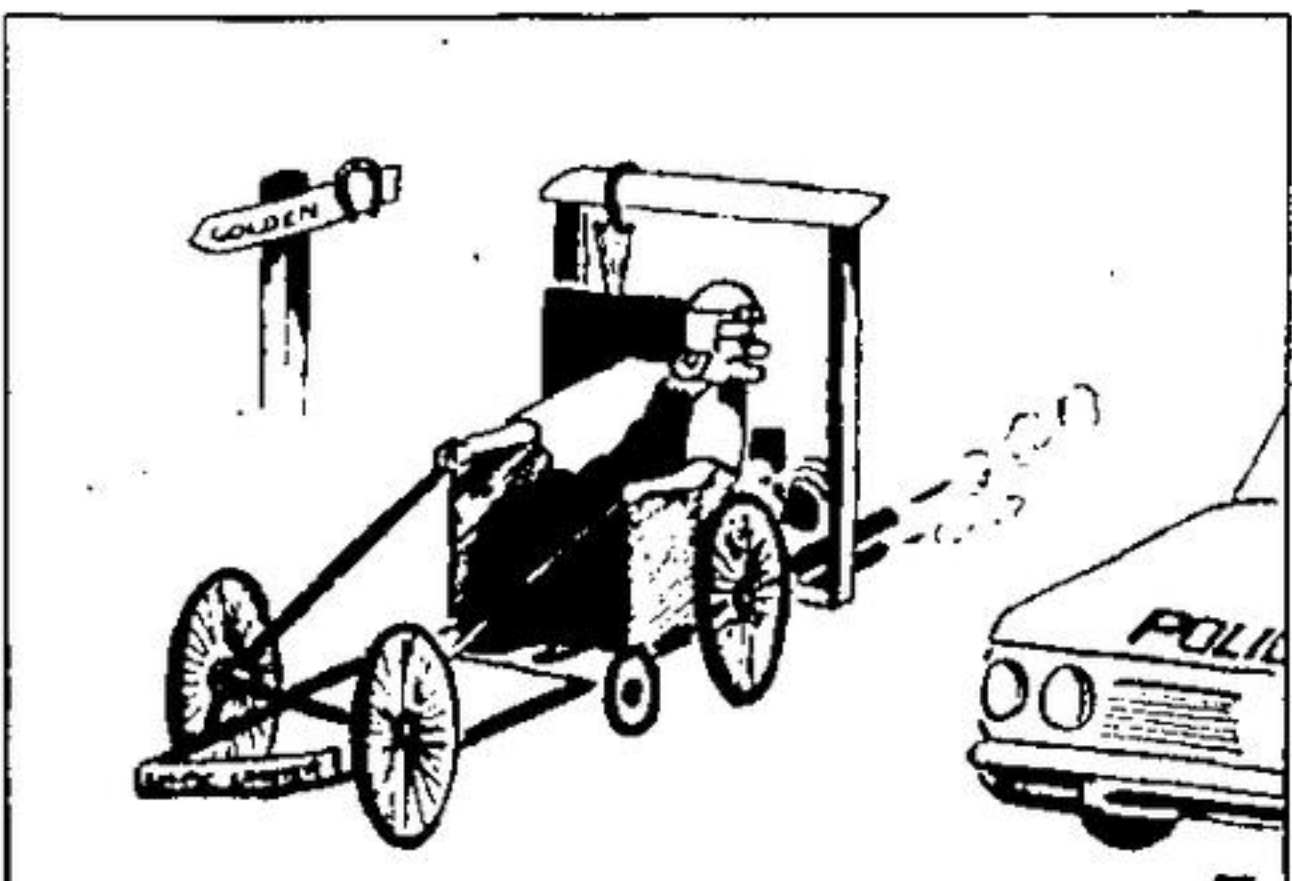
Activity at the Golden Horseshoe Dragway may be finished for this season, but the subject is going to be hotly discussed at the upcoming election and perhaps for a much longer time afterwards.



AWAITING THE SIGNAL to start is a competitor at the dragway.



CROWD PLEASERS at the dragway are these dragsters with front wheels spoked and the driver and engine in the back half of the frame.



PARACHUTE PACKED for a quick stop at the end of the runway is standard equipment for the fast cars at the dragway.

C.W. Kelly
and Son Ltd.

BRING YOU

A REVOLUTIONARY NEW COLOR TELEVISION SYSTEM FEATURING A REVOLUTIONARY NEW PATENTED COLOR PICTURE TUBE... THAT OUTCOLORS... OUTBRIGHTENS... OUTDETAILS AND OUTPERFORMS... EVERY PREVIOUS GIANT-SCREEN COLOR TV!

ZENITH CHROMACOLOR

After years of pioneering research and development... Zenith introduces Chromacolor... one of the biggest breakthroughs in color TV history, featuring the revolutionary new Chromacolor picture tube that outcolors... outbrightens... outdetails and outperforms... every previous giant-screen color TV! This revolutionary new color television system features the **New Patented Chromacolor Picture Tube** that represents a major breakthrough in color television picture quality. Brings you a brighter color picture, with greater definition and sharper detail than ever achieved in giant-screen color TV before Chromacolor **New Titan Handcrafted Color Chassis** with Zenith's exclusive Solid-State Dura-Module that combines handcrafted dependability with solid-state performance... **New RGB Color Circuitry** that is more sophisticated and highly refined to develop greater picture sharpness and detail, with higher color fidelity... **New Color Commander Control** that adjusts contrast and color level, with brightness in the proper balance simultaneously and they stay perfectly in balance as you adjust the color picture to match changing light levels in the room. There's no longer any need to turn separate controls... **Exclusive Chromatic Brain** with the first integrated circuit ever used to create a color picture. Produces the most natural reds, greens, and blues, and the broadest range of colors... **Zenith AFC Control** electronically fine-tunes the color picture at the flick of a finger. Keeps the color picture tuned as you change channels, even on the new UHF channels... **Exclusive Super Gold Video Guard Tuner** with contact points of 16-carat gold, gives you a sharper color picture for the lifetime of the set.

Zenith The quality goes in before the name goes on*

For the **ULTIMATE** in performance see these in operation at **KELLYS**



The **HILLIARD™ A4517M**

Popular Early American styled compact console in genuine Maple veneers and select hardwood solids exclusive of decorative front and trim. Early American styled ple-crust gallery. Zenith Titan 80 Handcrafted Chassis with exclusive Zenith Solid-State Chromatic Brain Color Demodulator. Now Zenith Color Commander Control. Super Video Range Tuning System. Sunshine® Color TV Picture Tube. AFC—Automatic Fine-tuning Control. Advanced Gyro-Drive UHF Channel Selector. 5" x 3" Twin-Cone Speaker. VHF and UHF Spotlite Dials. Cabinet size: 33" H, 35 1/4" W, 19 1/4" D.*

*Add 3 1/2" to depth for tube cap.

Zenith The quality goes in before the name goes on*

The **ZORN™ A4516W**

Superb Danish Modern styled compact console in genuine oil finished Walnut veneers and select hardwood solids with Scandia styled base. Zenith Titan 80 Handcrafted Chassis with exclusive Zenith Solid-State Chromatic Brain Color Demodulator. New Zenith Color Commander Control. Super Video Range Tuning System. Sunshine® Color TV Picture Tube. AFC—Automatic Fine-tuning Control. Advanced Gyro-Drive UHF Channel Selector. 5" x 3" Twin-Cone Speaker. VHF and UHF Spotlite Dials. Cabinet size: 30" H, 32 1/4" W, 19 1/4" D.*

*Add 3 1/2" to depth for tube cap.

Zenith The quality goes in before the name goes on*



The **ABBEY™ A4514M**

Charming Early American styled compact console in genuine Maple veneers and select hardwood solids exclusive of decorative front and trim. Cabinet features Early American styled gallery, splayed legs, pegged vertical columns, and base rail with three simulated drawers. Zenith Titan 80 Handcrafted Chassis with exclusive Zenith Solid-State Chromatic Brain Color Demodulator. New Zenith Color Commander Control. Super Video Range Tuning System. Sunshine® Color TV Picture Tube. Advanced Zenith Gyro-Drive UHF Channel Selector. 5" x 3" Twin-Cone Speaker. VHF and UHF Spotlite Dials. Cabinet size: 32 1/2" H, 33 1/4" W, 20 1/4" D.*

*Add 3 1/2" to depth for tube cap.

Zenith The quality goes in before the name goes on*



ZENITH CHROMACOLOR

STARTS AT \$729⁰⁰

SEE US NOW!

C.W. Kelly
and Son Ltd.

11-13 Wyndham Street
GUELPH — ONT.

822-6041