

Let's talk turkey.

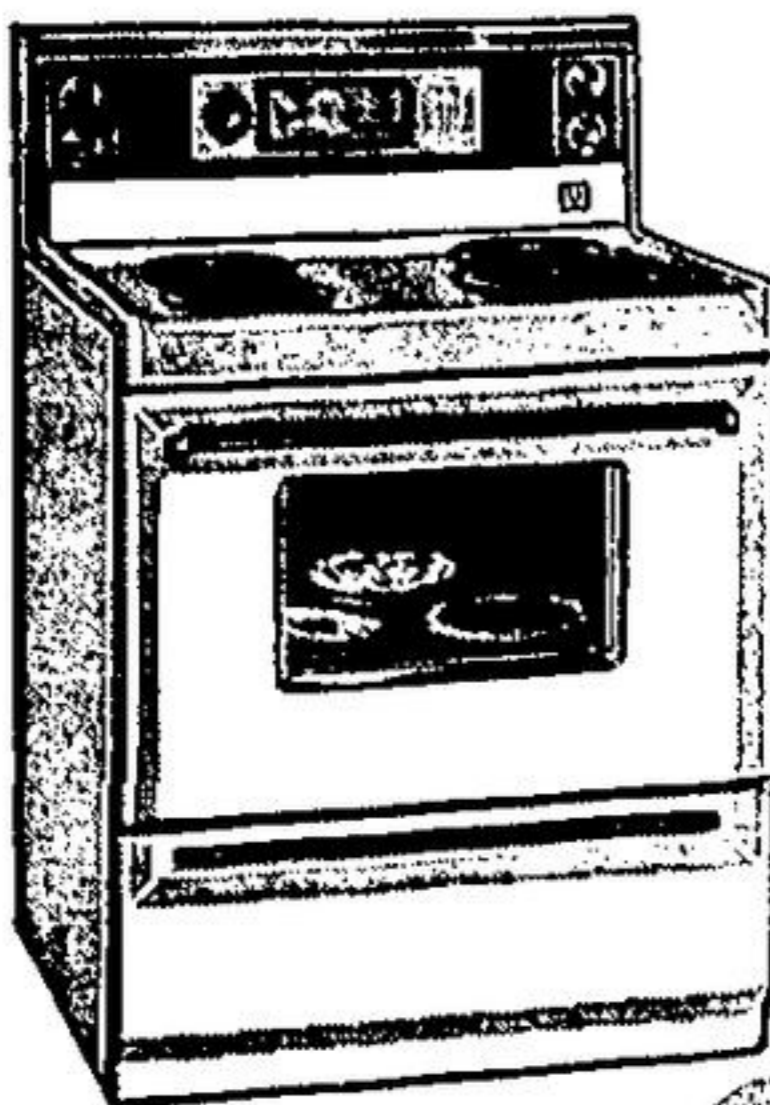
TO INTRODUCE THE NEW 1971

MOFFAT APPLIANCES
C. W. Kelly & Son Ltd.

are offering buyers a FREE turkey for your Thanksgiving dinner with the purchase of any major appliance.

Deluxe Budget Priced
MOFFAT Range With
Automatic Clock Control

Infinite heat switches give you unlimited control of surface elements.



- Timed appliance outlet ■ Spillproof cooking surface ■ Automatic high speed oven preheat ■ Surface element warning lights ■ Tilt up surface elements ■ Available in White.

MOFFAT Deluxe 30529 **\$199⁹⁵** W.T.

Deluxe Budget Priced
MOFFAT Range With
Variable Broil Control

Infinite heat switches give you unlimited control of surface elements.



- Automatic high speed oven preheat ■ Tilt up surface elements ■ Spillproof cooking surface ■ Lift off door with 18" window ■ Timed appliance outlet ■ Storage drawer ■ White, Avocado or Antique Copper.

MOFFAT Standard 24528 **\$169⁹⁵** W.T.

Deluxe 13 cu. ft.
MOFFAT refrigerator
with slide-out shelves

Big 55 1/2 lb. full width freezer with two pop-out flexible ice cube trays.



- Adjustable chill tray holds another 16 1/2 lbs ■ Three slide-out shelves ■ Egg shelves on door ■ Butter keeper ■ Optional "roll-about" wheels. Left or right hand door. White ■ 61 1/4" H x 28" W x 28 1/2" D.

MOFFAT S-13 **\$239⁹⁵** W.T.



11 Wyndham St. N.
Guelph, Ont.
822-6041

C. W. Kelly
and Son Ltd.

The Acton Free Press

Ninety-Sixth Year. — No. 15

ACTON, ONTARIO, WEDNESDAY, OCTOBER 7, 1970

SECOND SECTION

Two day Open House

Talented craftswomen draw crowds to Elm Tree farm

The weather outside was damp and cold but the hospitality of the Hoey family at Elm Tree Farm on Sideroad 23 was, as usual, warm and friendly as many friends and acquaintances, some old, some new, visited the country farmhouse on the occasion of the annual open house last Saturday and Sunday.

Hand decorated and glazed porcelain doorknobs, switch plates, door pushplates, commode knobs in colourful floral designs, and ceramic tiles to delight any decorating expert were tabled for selling as the interested visitors milled about the coach house.

Authentic artistry
Silk screen printing originals on table cloths, bath towels, small squares and stationery which could be mounted and framed, were sold fast to patrons relishing the ownership of authentic Elizabeth Hoey artistry, two of the most popular designs being those of the Maple Leaf and Queen Anne's lace.

Gorgeous and deeply piled sheepskin rugs, the pelts of home-grown animals raised on the Hoey farm lands, were neatly stacked ready for lavish floor covering usage or, more recently adapted as rocking chair covers.

Everyone chatted in friendly fashion and moved around the large sale tables feasting on the amazing output of the ambitious and clever Canadian craftswoman, stopping briefly to chat with another artist, Mrs. Mabel E. Fells of London, Ontario, as she displayed her own self-designed and silk screen printed bed spreads. Mrs. Fells is Martha Hoey's godmother.

Emulates mother
One exciting innovation of the last two years of the Elm Tree Farm Open House has been that of Martha Hoey's pottery display and this year visitors shared an even greater delight when they were able to watch the young artist literally produce quantities of elegant bowls and vases, as she skillfully manipulated the rotating potter's wheel.

Martha, who will soon be leaving for Montreal where she is presently completing her final

year at Sir George Williams University in Applied Arts, shows all the signs of emulating her famous mother. Soapstone carvings and contemporary acrylics, engravings and pottery are already part of her vocabulary of abilities.

Feeling for clay
She became interested in potting when, as a young child she visited regularly with family friends who enjoyed the craft as a hobby. Her "feeling for clay" was an inherent one which, after her 1964 "first pot" has steadily grown until now, she creates elegant coffee mugs, tea sets, and other priceless pieces to a market thirsting for home craftsmanship.

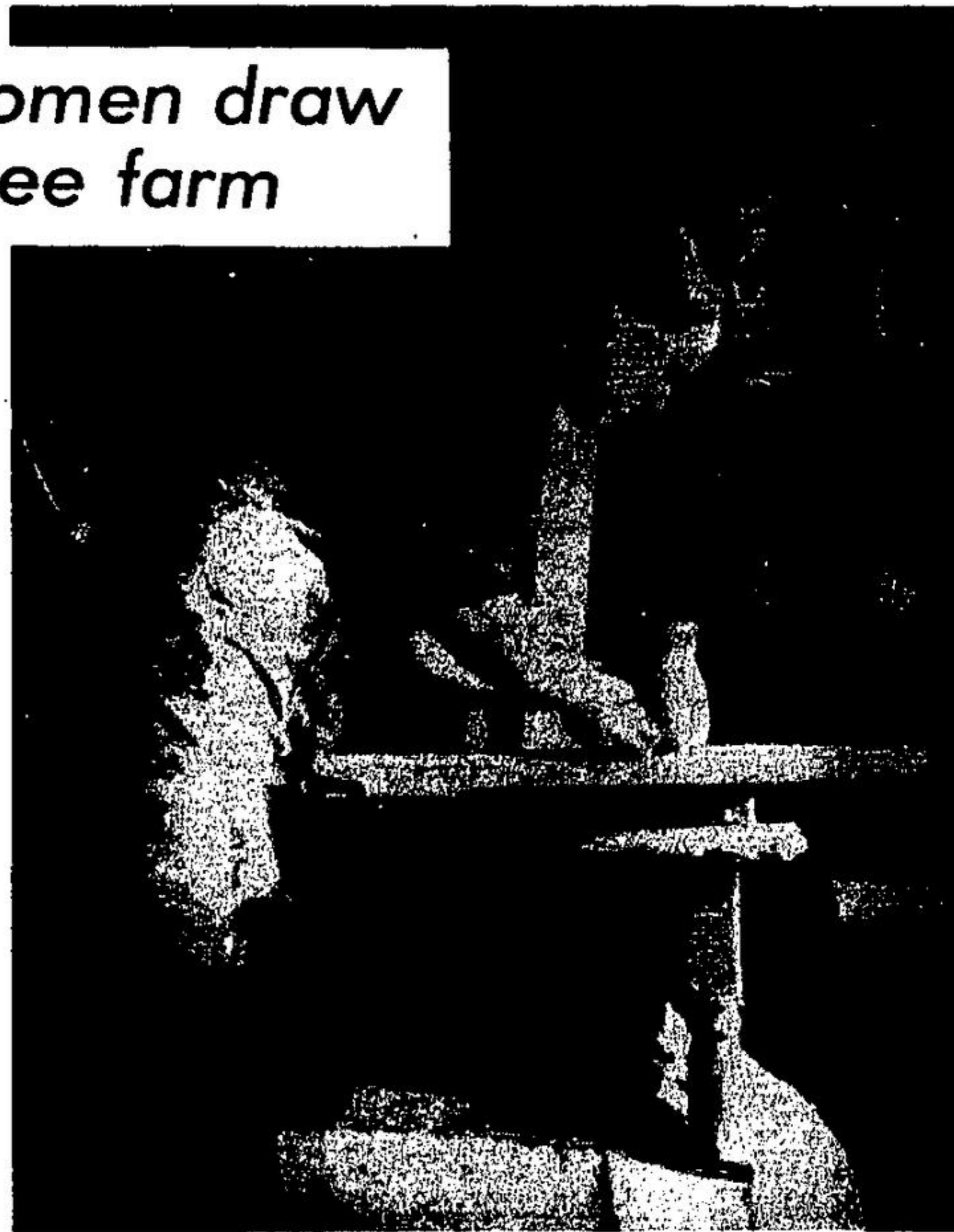
The lovely old field stone home with the 1859 identification stone above its portals, boasts a living room with many of Elizabeth Hoey's water color achievements as well as some of Martha's carvings and engravings.

Yarn decor
Further evidence of the tremendous productivity of the family was evident in the several display areas of the farm at the Open House, as baskets of specially dyed batches of yarns for tapestries and knitting added to the decor.

Another interesting feature of the weekend's sale items were the vertical wall hangings which drew the attention of many visitors. Martha had created a number of these in several widths on a type of Navajo loom using various materials and items to enhance their decorator appeal.

Carolyn (Hoey), and Peter McIlwraith were in charge of refreshments - crackers, cheese, pickles and cider, and sold bottles of home-made pickles.

The two-day visiting schedule of 10 a.m. to 5 p.m. brought in numerous people from Gravenhurst, London, Sarnia, Toronto and the district of Hamilton many of whom were friends who have followed the career of Elizabeth Wilkes of Oakville, from her university years and are constantly keeping in touch to see what new form hers or her daughter Martha's artistic talents will take on.



MARTHA HOEY'S audience was delighted as she magically produced items of interest from blobs of clay on her rotating wheel. Here, she has just

completed a vase which she places on a table in her studio ready for drying before she glazes it and puts it in the kiln. — (Photo by Lorraine)



PRETTY NANCY Clarkson of Toronto models a robe of screen printed towelling designed by Elizabeth Hoey. Behind her are batches of wool and a

hand-woven rug composed of wool from the sheep of Elm Tree farmlands. — (Photo by Lorraine)



BETTY LOU Clark of Rockwood steals a glance at a customer from between bolts of screen-printed table cloths at last weekend's Elm Tree Farm Open House. — (Photo by Lorraine)



ARTIST Elizabeth Wilkes Hoey greeted many visitors to the annual Open House at Elm Tree Farm in Nassagaweya Saturday and Sunday. — (Photo by Lorraine)



DECORATOR wall-hanging is created by Martha Hoey, who adds a strand of bullrush to well, cedar, bark and other "findings" on a kind of Havaho frame. (Photo by Lorraine)

Obituary

George Musselle Citizen of Year

A former Citizen of the Year, George Hart Musselle died at his home, R.R. 1, Acton, on Sunday September 27. He had been hospitalized with a heart attack but had been home a few days when his unexpected death came as a shock to family and a host of friends.

Private funeral service was held Wednesday morning at the Rumley-Shoemaker funeral home, conducted by the Rev. A. H. McKenzie and the Rev. Harry Dawson. Pallbearers were Vic Patrick, Jack McGeachie, Ted Hansen, George Barnes, Vincent Dunn and Bill Nelles. Interment was in Fairview cemetery.

Friends congregate
The evening before about 100 members of the Legion gathered to hold their special service for their comrade. The casket was draped with a Union Jack.

He was a member of the Legion for nearly 40 years. He served on all committees and was president from 1940 to 1943 and secretary from 1947 to 1954. Since 1958 he was service officer. He played an active part in the War Service league. He was directly responsible for the Legion hall being in its present quarters.

Proud of choir
Among the Legionnaires were

about 50 past and present members of the Acton Legion Choralliers, the choir he founded and of which he was so proud. He led them when they sang at Expo in 1967, the year he was named Citizen of the Year.

His was a musical family. He was a member of Knox church choir and took part in special singing groups for church services or garden parties.

Came to Canada
Mr. Musselle was born in Seaford, Sussex, England, and after the war, in 1922, came to Canada. In two weeks he was working for Acton Tanning Company in Acton, where he later lost his left arm.

He and Bessie Woodhall were married in Acton in 1927. Working with his father-in-law, in 1931 Mr. Musselle began building Lakeview greenhouses, where his florist business prospered for many years.

He is survived by his wife Bessie, daughter Olive Ann (Mrs. Allan Allerby) Acton, sons George C., John St., Acton and John N., Sault Ste. Marie, and eight grandchildren.

Lodge member
He joined Walker Lodge in 1943 and was secretary and chaplain. He was a member of the Royal City Lodge of Perfection and the

Guelph Chapter of the Rose Croix. Lodge members numbering about 50 also held a special service at the funeral home.

Mr. Musselle's enthusiasm, his generous use of his time and talents and his devotion to any task endeared him to his associates over the years.

As his citation at the Citizen of the Year dinner observed, "he made Acton a better community for all of us."



GEORGE MUSSELLE