

101 TREES

Colorado Blue Spruce
 1.5-5 metres
 905-877-6811
 VOLUME DISCOUNT & DELIVERY AVAILABLE

Create A Beautiful Natural Property Line

OPEN TO THE PUBLIC

Good Trees at GREAT PRICES!!

10 Trees - 2.5 metre (8') tall delivered to you only \$1599⁰⁰

10 Trees - 3.5 metre (11') tall delivered to you only \$1899⁰⁰

Help Reduce Greenhouse Gas. Plant Trees!

- ▲ Over 5000 Colorado Spruce Trees to choose from.
- ▲ A variety of colours and sizes to suit your requirements.
- ▲ Come out to the 101 Tree Farm to pick your trees.
- ▲ Planting services available

Mike 905-877-6811

101trees@gmail.com
9101 15th Sideroad,
Halton Hills
www.101trees.ca



Autumn is the time for cluster flies to appear

Like the swallows to Capistrano, cluster flies return to homes each fall. If you are plagued with flies around your windows each winter and spring then you have cluster flies.

Cluster flies are parasites on earthworms, their cycle taking place in lawns and fields in the summer. Towards the end of August the adult flies start to look for a suitable place to overwinter. What could be a better place to spend the winter than a centrally heated home with a nice attic, insulated walls and lots of small cracks and gaps on the exterior to crawl into?

These flies will often gather on the sunny, protected sides of a home in early fall and then start to penetrate into the structure with the coming of colder nights and frost. During the winter the flies are dormant but a bright sunny day will often wake some of them up.

Crawling through the wall or attic insulation they will emerge out from under baseboards, around window trim or out through ceiling fixtures and pot lights into the house. Once in the house they will congregate at the windows trying to get outside. At night, they will buzz around lights.

One home we treated had mosquito netting over the beds to keep the flies out when they tried to read at night.

In the spring, usually around mid-March the flies start to come out of dormancy and will emerge inside the house— often in large numbers. This will continue until mid to late-April when they have either all gone back outside or come into the house. Cluster flies do not feed or breed or lay eggs in the house.

The 'rural legend', especially prevalent up around Bruce and Grey Counties, that the government introduced cluster flies to control caterpillars on fruit trees is another example of blaming it on the government. In fact, they were first reported here in Ontario in the early 1900's.

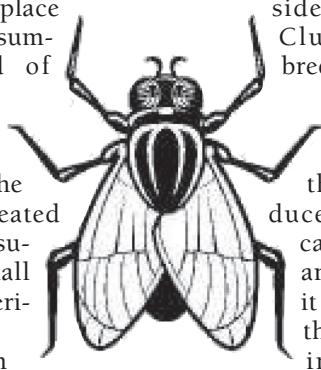
Thorough sealing of all cracks and crevices helps prevent cluster flies from entering. They especially like to enter high up around soffits, eaves and dormers. Homes that are shaded by trees seem to be less affected.

We provide an effective treatment of cluster flies by treating the exterior and attic of homes at the correct time in the fall and/or spring.

Taken from an embroidered plaque hanging on the wall of one of our customers:

'If Noah truly was so wise
 He would have swatted
 Those two flies.'

—Article supplied by Dr. Bug



As the days grow shorter, make the most of them.

0% for 36 months^{*b21}



JOHN DEERE
 Nothing Runs Like A Deere™
2305 COMPACT UTILITY TRACTOR
 • 24-hp, 3-cylinder Yanmar diesel engine
 • Independent mid and rear PTOs
 • Optional iMatch™ quick hitch

0% for 36 months^{*b21}
 • 44-hp, 3-Cylinder Yanmar diesel engine
 • eHydro™ transmission
 • Standard 4-wheel drive

3720 COMPACT UTILITY TRACTOR


0% for 36 months^{*b21}
 • 58-hp, 4-cylinder JD PowerTech™ turbocharged diesel engine
 • Twin Touch™ eHydro transmission

4720 COMPACT UTILITY TRACTOR


- EXPERT STAFF
- THE NEWEST EQUIPMENT
- DEMOS AT YOUR CONVENIENCE
- COMPREHENSIVE MAINTENANCE PLANS
- 100% COMMITMENT TO YOU
- AND MORE....

GOLD STAR CERTIFIED JOHN DEERE DEALER



FARM SERVICE LTD.

Elmira
 122 Church St. West
 Elmira, ON N3B 2Z6
 (519) 669-5453

Listowel
 Highway # 23 North
 Listowel, ON N4W 3G6
 (519) 291-5390

Mt. Forest
 R.R. #3
 Mt. Forest, ON N0G 2L0
 (519) 323-1340

Ospringe
 RR # 3
 Acton, ON L7J 2L9
 (519) 833-9332

Shelburne
 732 Steeles St.
 Shelburne, ON L0N 1S4
 (519) 925-2944

www.JohnDeere.com

VISIT YOUR GOLD STAR CERTIFIED JOHN DEERE DEALER TODAY!

*Offer valid from Jul. 29, 2008 until Oct. 31, 2008. In the event the loan goes into default, the charge for amounts past due is 24% APR. Taxes, set-up, delivery, freight, and preparation charges not included and may increase price or monthly payment(s). Minimum purchase may be required. See your dealer for complete details and other financing options. Program subject to change, without notice, at any time. *Subject to John Deere Credit approval. For personal or commercial use. Up to a 20% down pymt may be required. For example, on a New John Deere 2305; 4720 Compact Utility Tractor, based on a selling price of \$11,639.; \$41,097. (based on MSRP, dealer may sell for less), less a \$1,163.90; \$4,109.70 down pymt. results in a balance of \$10,475.10; \$36,987.30 to be financed for a maximum of 3 years with 36 mo. pymts. of \$290.98; \$1,027.43, totaling \$10,475.10; \$36,987.30, based on 0% APR with a cost of borrowing of \$0.; \$0.. John Deere's green and yellow color scheme, the leaping deer symbol, and JOHN DEERE are trademarks of Deere & Company. The engine horsepower information is provided by the engine manufacturer to be used for comparison purposes only. Actual operating horsepower will be less.