

www.RealEstateInHaltonHills.com



NORM PAGET
Sales Representative

RE/MAX
REAL ESTATE
CENTRE INC.

905-877-5211

1-800-834-5516



www.RealEstateInHaltonHills.com



\$595,000

Spacious 4000 sq. ft. home on 3.4 acres. Huge principal rooms. Indoor pool, 6 bedrooms on second floor, oak kitchen, hardwood & broadloom flooring, fireplace in the living room & rec room. Large eat-in kitchen, separate dining room. Call Norm* to view.

A BEAUTY FOR \$309,900

Gorgeous 3 yr old home including 3 bedrooms and 3 washrooms. The master boasts 4 pc. ensuite and walk-in closet. Large kitchen with ceramics, extra pantry space and 9' patio door walkout to patio. Rec room completely drywalled and potlights. Large living room that could be combined as a living room and dining room. Central vac. Don't miss the opportunity to view this absolutely spotless home. \$309,900.



NEW PRICE



5454 sq. ft. Commercial/Retail location for lease in downtown Acton. Full basement. 2 double door loading. C1 zonings permits a wide variety of uses. \$2,700/month includes taxes, maintenance and insurance. Call Norm Paget* for details.

COMMERCIAL OPPORTUNITY IN HISTORICAL DOWNTOWN GEORGETOWN!

2200 sq. ft. Commercial retail building with 2 one bedroom apts, located in downtown Georgetown. C2 zoning with a variety of uses. Recent renovations include roof, windows and store front. Call Norm Paget* for more details.

www.RealEstateInHaltonHills.com

Johnson Associates

HALTON LTD., REALTOR

Elizabeth Doell

Sales Rep.



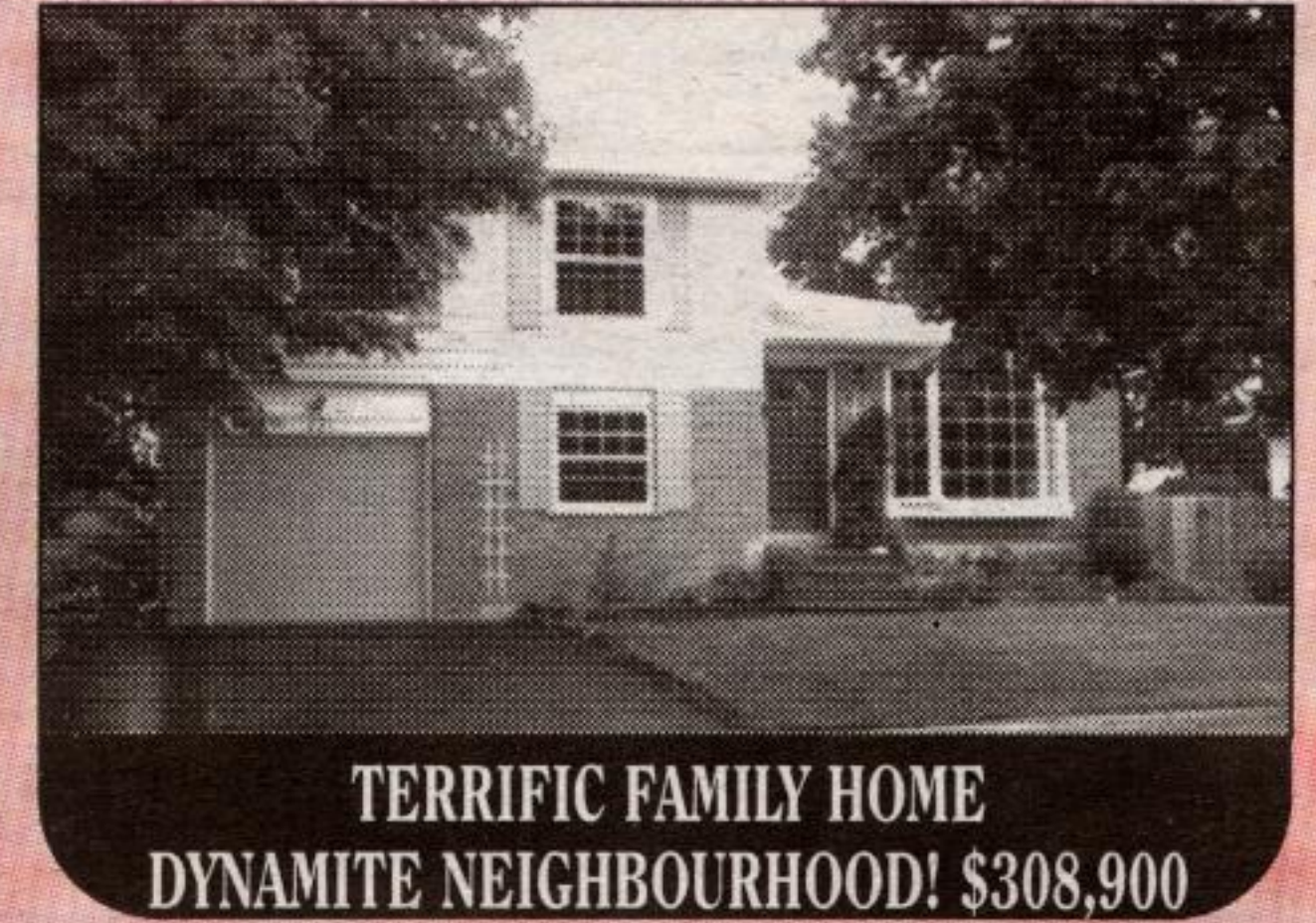
(905) 877-5165 Local/Toronto

E-mail: edoell@trebnet.com



A REAL STUNNER! \$439,900
2700 SQUARE FEET

Beautiful almost new 4 bedroom home in a dynamic neighbourhood. This lovely home is super sharp, is spotless, and has tons of upgrades including hardwood floors, 4 baths, superb landscaping, fully fenced lot. Overlooks park and greenspace! Call Elizabeth Doell* to view this great property.



TERRIFIC FAMILY HOME
DYNAMITE NEIGHBOURHOOD! \$308,900

Updated and upgraded 3 bedroom home on a huge private lot. Hardwood floors, fireplace, main floor office, finished basement, master bedroom with ensuite bath! A great offering. 05-472-30

Call Elizabeth Doell* to view this home.



GORGEOUS EXECUTIVE HOME
ONE OF GEORGETOWN'S FINEST

Superb 3000+ square foot home on a 2 acre lot close to town. 9' ceilings, columns, hardwood, conservatory, 5 baths, finished basement with custom oak bar and more... Beautifully landscaped and finished from top to bottom. A beautifully finished home, come and see it today!

Call Elizabeth Doell* for your appointment



LAST LOT AVAILABLE IN EXCLUSIVE ESTATE! 5.4 ACRES! \$349,900

Fabulous lot located close to town, just north of the Glen. Pond, trees and rolling land surrounded by 40 acres private parkland exclusively owned by the property owners in this wonderful small development. Act today, this is an opportunity of a lifetime. 05-552-VL

Call Elizabeth Doell* for more information.

RENTALS • 1 bdrm suite in Rockwood, \$650/mth

• 2 & 3 bdrm suites in Acton - private yards! Starting at \$825/mth



Maureen Plucinsky B.Sc.

HALL OF FAME

Town & Country Sales Representative

RE/MAX
Real Estate Centre Inc.

(905) 877-5211

1-800-834-5516

Directions & Photos

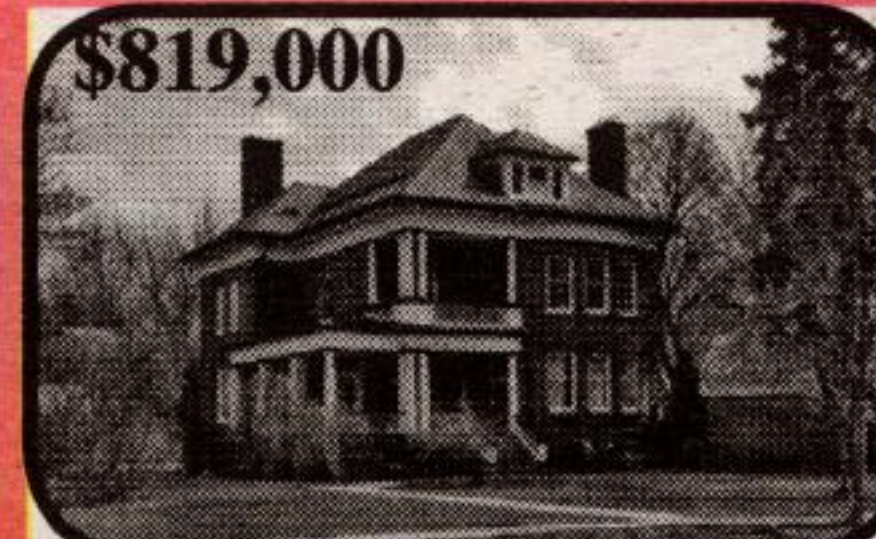
<http://maureen.ca>



Sparkling backsplit with full lower level on premium, pie shaped lot with great views. Backs onto greenspace. Highly upgraded. Incl: fridge, stove, dshwshr, CAC, C VAC & water softener. \$334,900



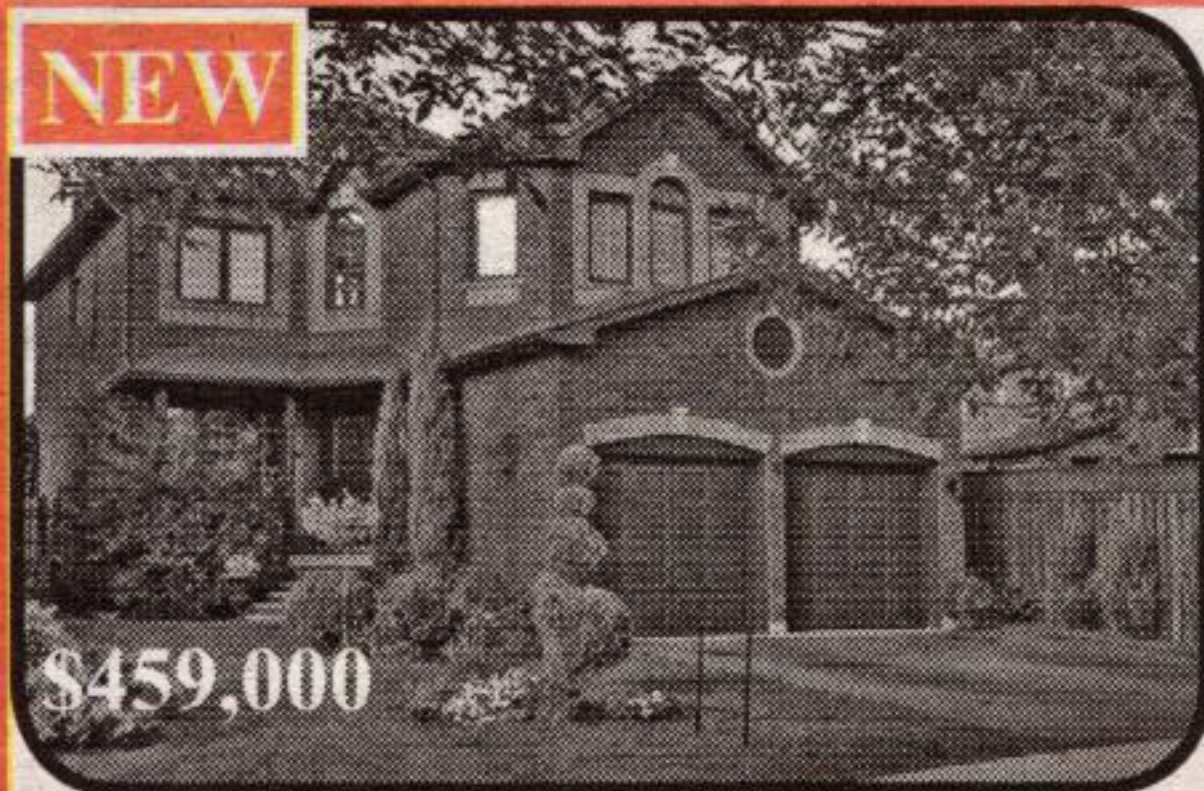
Stunning Olde English Pub style home + sep gar/shop & studio backing onto gorge & river. Focal pt: "theater" kit o/l DR & Fam Rm w wet bar + modern kit. 3 FPs! Hand finished columns & beams!



"Moorecroft". Authentic Queen Anne, 1896, with original eclectic embellishments. Impressive central hall. Hrdwood floors. Glorious stained glass. 1/g pool. Det 2 car gar. Huge lot, 132' x 132'.

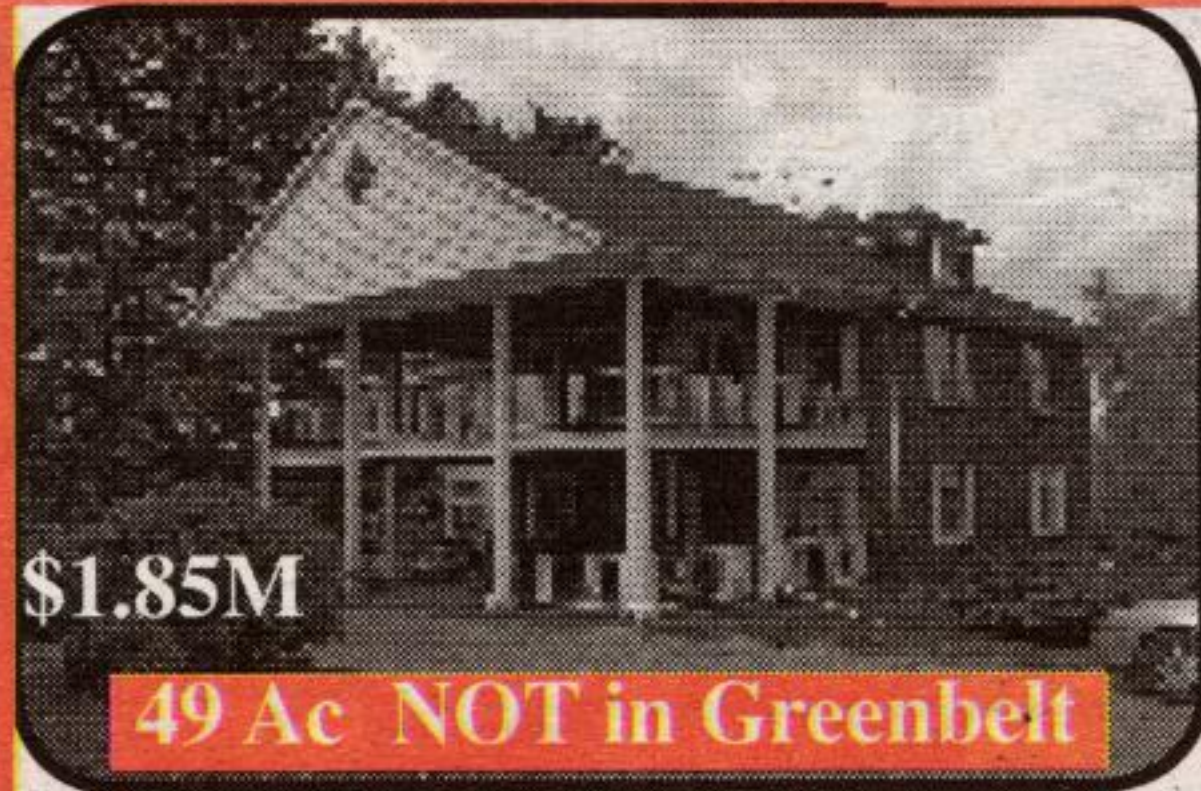


Caledon: fine race horse facility. ~ 49 stalls. 4 large barns + new office/lab/ breeding barn. 3 tracks. Manager's house & 2 staff trailers. S of Hwy 9, W of Airport Rd. 19726 Mountainview Rd



\$459,000
Georgetown South: 4 Harrop Avenue

Elegant 4 bdrm, 3 WR, upgrad & landscaped, on huge pie lot. Heated i/g pool & sep large play yard. Hardwood in LR, DR, Fam rm & kit. Granite floors in Indry rm & 2pc. 6" baseboards, wide trim, pot lights & French doors. Prof painted. New sliding doors. MBR with sep shower & o/s tub. Bsmt insulated to floor. R/i WR. Cold cellar. \$459,000!



\$1.85M
49 Ac NOT in Greenbelt
Halton Hills: 10858 Sixth Line, H.H.

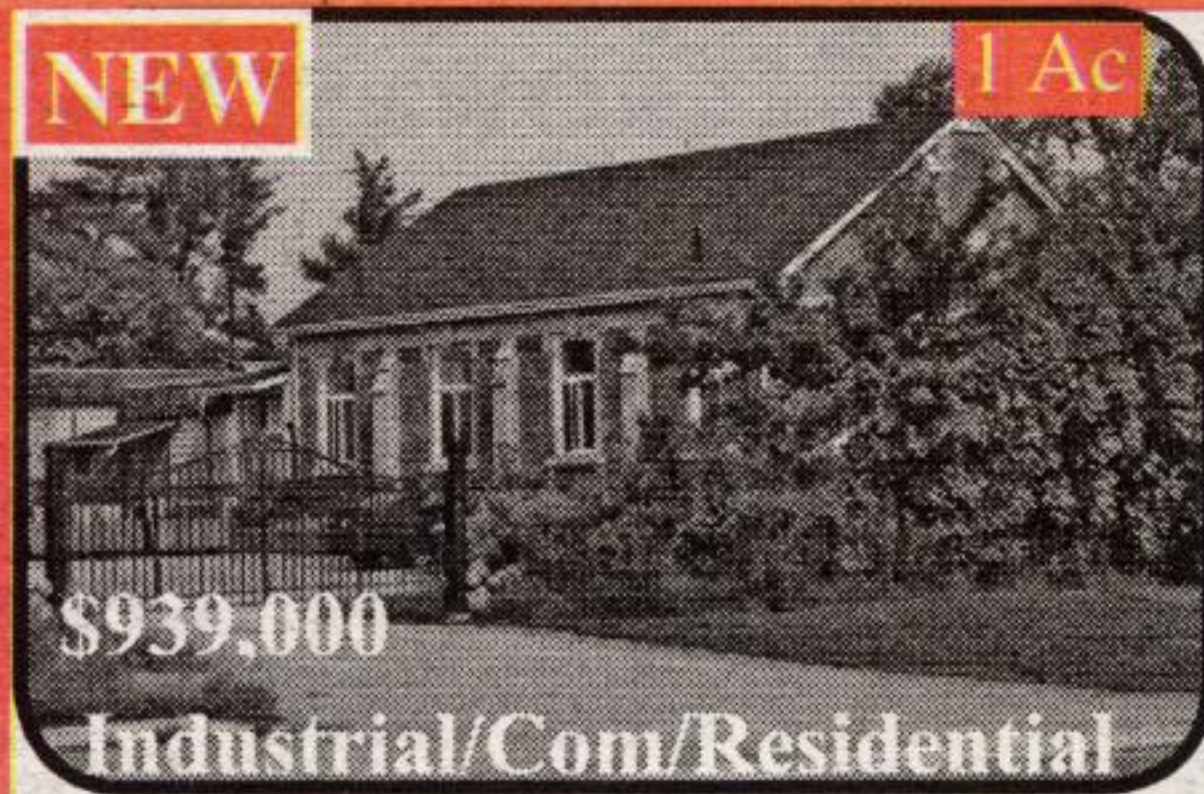
South of Georgetown. NATURAL GAS! 49 acres of prime farmland with splendid 5 bdrm, 4 WR home. Indoor arena with 10 box stalls. 5 car garage with shop. Sun rm with walk-out to balcony. Good attic. Can be developed. New shingles. New hi-eff nat gas furnace. 3 wells. ~5 min to Georgetown & GO, ~10 min to Milton, Hwy 401 & 407.



\$259,900
NEW 64 Longfield
Acton: Lovely brk home on large lot, 60' x 166 ft, backing onto large park. Walk to schools, arena & shops! Hrdwd. Side entrance. Lower lev: Indry rm, bdrm, WR & open concept LR/kitchen. 100 amperes.



1 Ac
Erin: Lovely 3 bdrm on 1ac off paved rd close to all amenities of Erin. Eat-in kit. Hardwood floors. W/o from DR & LR to large deck. Fabulous views. Hi-eff propane furnace. Drilled well. \$319,000.



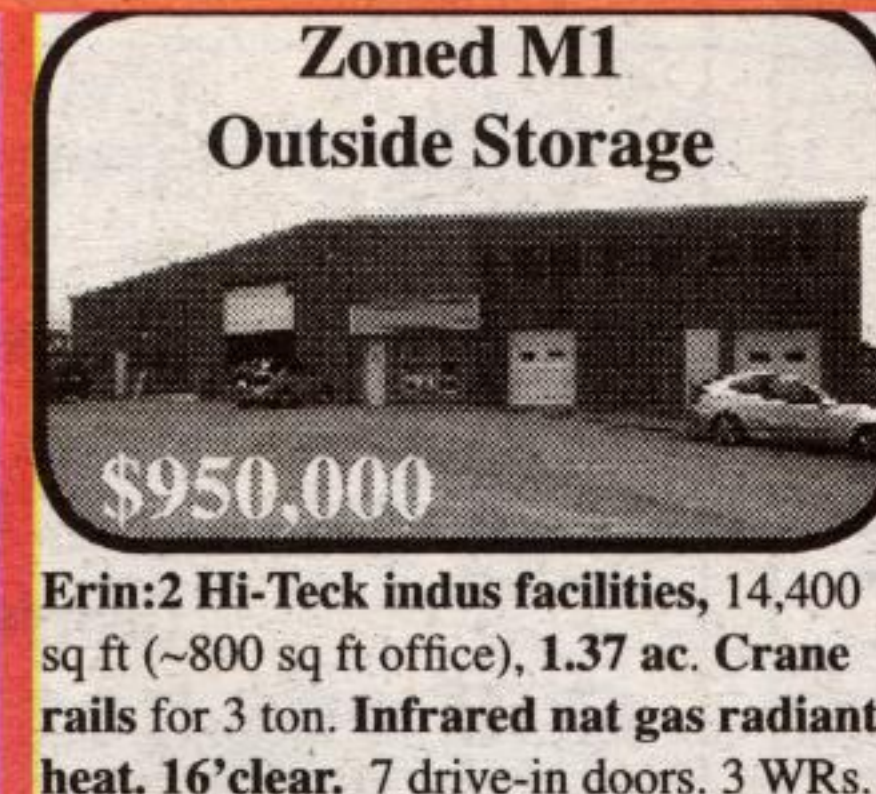
\$939,000
Industrial/Com/Residential
Halton Hills: 13029 Steeles Ave, West

Excellent location, Steeles, W of Trafalgar. Zoned M1, General Indus with accessory com & res uses. Stunning, 3+ bdrm, open concept home with ~15ft ceilings & huge windows. (Could be office area.) Indus area: ~4800 sq ft (incl bsmt). 12' clearance. 1 acre with privacy gates, pkg for many vehicles & private patio. Mun water & sewers by end of 2006.



2 car gar, i/g pool, h tub!
Georgetown: 15 Baylor Crescent

Lovely, spacious 4 bdrm, 2 washroom home on private 65 by 110 ft lot. Double garage. Inground pool (16' x 32') & hot tub! Updated WRs. Renovated kit overlooking DR with walk-out to deck, hot tub, pool & yard. Cabana & shed. Rec rm with wood burning fireplace & office. Located on quiet crescent with quick access to Hwy 7, W.C. & 401. \$349,000



\$950,000
Erin: 2 Hi-Tech indus facilities, 14,400 sq ft (~800 sq ft office), 1.37 ac. Crane rails for 3 ton. Infrared nat gas radiant heat. 16' clear. 7 drive-in doors. 3 WRs. 600 volts, 200 amps, 3 phase. Security.

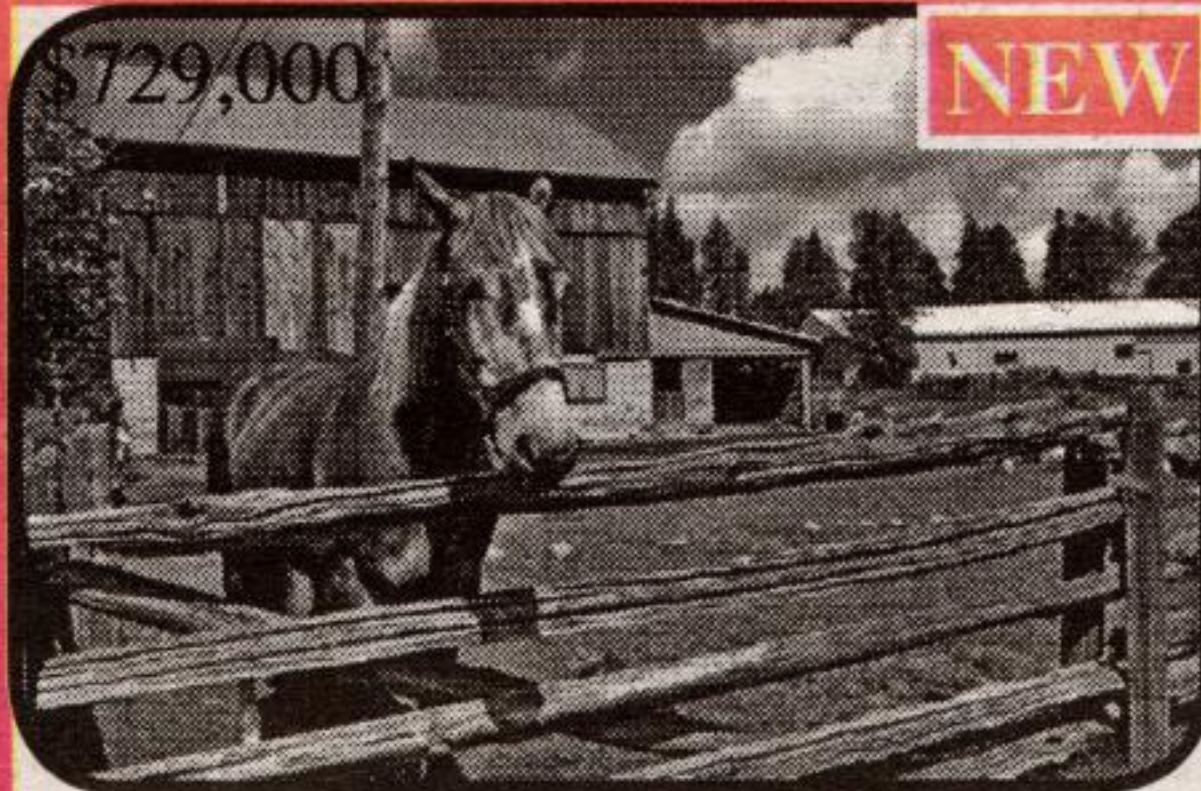


\$779,900
Halton Hills: Exquisite 4 bdrm, 5WR, estate w fin walkout lower level. ~10 min to 401 at Hwy 25. Upgraded kit with 2 Jenn-air stoves, b/i microwave, centre island, granite counter tops, extra cabinets. Prof decorated. Hi-speed internet!!



\$799,900
7 Car Garage
West Garafraxa: North of Rockwood

Fab 5.25ac estate w over 4000 sqft of living space. Barn (40' x 24') w 3 oak horse stalls. Out building (2,700sq ft w heat & CAC) divided into: games rm (756 sq ft); shop (1270 sq ft) w 2 offices & 2pc & utility gar (675 sq ft), all in excel condition. Loc on private parcel w stream & 2 ponds. Just N of Oustic & 5 min E of Fergus. ~35 min to Georgetown & GO.



\$729,000
Milton: ~42.5ac, Greenbelt protected

Rare, secluded, picturesque land with ~25ac mature forest, 8ac hay, 4ac pasture, riding ring & groomed trails. < 35 min to airport. Gently rolling w old stone walls, mature trees & creek. Bank barn. Drive shed. Lovely 3 bdrm bungalow on knoll w MF Indry. 2 walkouts to deck under mature trees. Loc next to 50ac Agreement Forest with groomed trails.



\$749,000
Commercial
Commercial property, C1, on Steeles near Trafalgar & 401. Presently: general store, 2 bdrm apt upstairs, post office & used car sales lot. Com, Secondary residential & Institutional. "As is". Exclude contents.



\$785,000
Halton Hills: near Milton. 1289'F on 15th SR; 234' F on Hwy 25. Gated. Lit paved driveway. 4 bdrms, 3+ WRs, MF Fam rm, 3 FPs, 2 car gar. Shop: (~18' x 32'). Rogers cable. 8 min to GO.