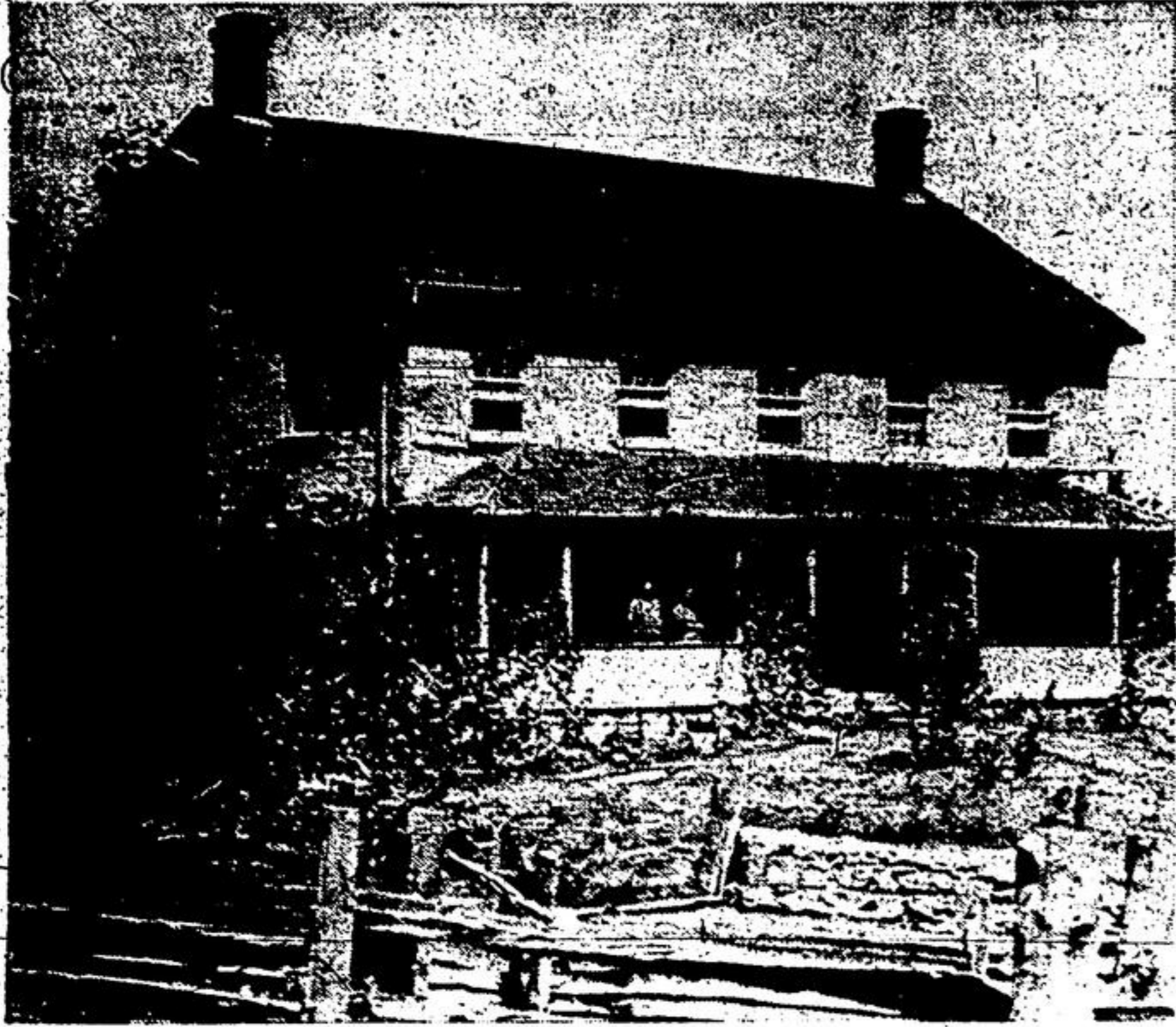


Stately Appearance is Gone Just the View Remains



The house on the hill north of Glen Williams as it used to be. The magnificent view from here extends out into Lake Ontario.



Now empty and gutted, the house has lost its stately appearance. It has been stripped of its valuables and is now nothing more than an empty shell.

by Jerry Tuten

On a clear night in 1912, Winnifred Rutledge could see Canadian National—Exhibition fire-cracker illuminations from her window.

The house from which she looked at the CNE, and Lake Ontario, still stands erect on top of a hill near the 10th Line and 27 Sideroad intersection.

A visitor to the house can still see the lake from the third floor windows of the century-old house. But it seems now the days are numbered for

Bought House

A Georgetown company, Larmar Developments, bought the tall and handsome house, house and the 200 acres surrounding it last month.

The house from where Winnifred Rutledge looked at the world and Lake Ontario isn't the same as the charred and dilapidated structure now standing on the same location.

Became Den

During the past 11 years, the house has become a den for motorcycle gangs, thieves and itinerants. Since the last tenant left in 1958, the abandoned house has served as a hideout for questionable characters.

These overnight visitors tore out the inside of the ancient house, lit fires on the floor and destroyed anything they could lay their hands on.

Ed Martin who bought the house in 1936 and owned it until last month complained to the police, but nothing could be done, to stop the gangs.

Royal Canadian Mounted Police and Milton OPP raided the house a number of times to arrest drug addicts.

Complicated

The situation was complicated because the land around the house is located on the Bruce Trail and thus became a passageway for legitimate hikers. It was difficult to differentiate between the hiker and the criminal.

The house was built in 1860 by James Reid of Terra Cotta, his daughter, and then his granddaughter Emma Coles inherited the property.

Emma Coles, whose mother died when she was one year old couldn't sell the house until she became 21. Soon after her 21st birthday, Emma, who now lives in Acton, sold the house to the Rutledge family in 1912.

From London

The Rutledges, who had just

THE GEORGETOWN HERALD
THURSDAY, OCT. 23, 1969
PAGE 5

arrived from London, England, paid \$6,500 for the house. They lived there for five years, and in 1917 sold it to Hugh Logan, Ed Martin, who married Logan's daughter, bought the property from his father-in-law in 1936.

Martin never lived in the house. From 1936 to 1958 he rented the house to a number of people.

In 1940 careless smoking caused a fire which damaged one of the walls. Since 1958, the house has survived many a deliberate fire started by trespassers.

Martin said he couldn't protect the house because he is too old. He hopes the property will have a better fate with Larmar Developments.

NORVAL

Interesting Programs For Norval Groups

Norval Women's Institute enjoyed a trip to the St. Lawrence Starch Co. at Port Credit on Thursday afternoon, October 9 with 24 attending including a car load of 6 ladies from the Silverwood WI.

Mrs. Rumble, the company's Home Economist, demonstrated how to make several delicious recipes using the plant products. These tempting dishes were won by ladies holding the lucky tickets. A cup of tea or coffee and cookies were enjoyed after which Mrs. J. Murray thanked Mrs. Rumble for the entertaining and informative afternoon. Before leaving for home each one was presented with cook books and a tin of cooking oil. The program was planned by Mrs. Don Murray and Mrs. G. Caseley, the Canadian Agriculture & Industries conveners.

The ladies returned to the home of Mrs. D. Murray for a brief business meeting. Mrs. D. Murray gave the report of the district directors meeting. Mrs. Howard Chester and Mrs. D. Murray were appointed to attend the short course on quilts and some members plan to attend the reception for Dr. Ethel Chapman on Oct. 28.

Two very interesting films on drugs and alcoholism were shown at the meeting of Unit Two of Norval United Church UCW held at the home of Mrs. Gordon Reid on Wednesday evening, October 15. A lively discussion followed the viewing of the films. Mrs. R. Crawford,

Jr. and Mrs. Julian Reed were in charge of the program. Mrs. Gordon Laidlaw presided for the meeting. Mrs. Mac Hyatt and Mrs. Bill Laidlaw gave the devotional and Mrs. Roy Laidlaw and Mrs. Orval Shea assisted the hostess in serving lunch and a social time was enjoyed.

Unit One of Norval United Church met at the home of Mrs. Wm. Graham, Georgetown on Thursday afternoon, October 6 with Mrs. Guy Wilson presiding.

The roll call was answered

with a thought or poem on Thanksgiving. Mrs. Gordon Miller gave the devotional and Mrs. G. Wilson gave the chapter, from the study book on Chinese and Canadian relations which proved of special interest at this time when Canada is anxious to have China recognized at the United Nations. It was decided to have lunch at the Driftwood at the Nov. meeting. A social time followed the meeting with Mrs. Lorne Cleave and Mrs. James Doane assisting the hostess.

At a recent meeting of the

LA for Guides and Brownies held in the Presbyterian Church a new executive were elected, president Mrs. Kitty Hetherington, secretary Mrs. Lola Edgar, treasurer, Mrs. Barbara Newman.

Special envelopes were in all three Norval churches on Sunday, Oct. 19 for contributions to the Canadian Bible Society. It is hoped that people will contribute in this way in place of an all out canvass. Next Sunday will not be too late to make a donation. — Mrs. Ed McLean

ATTENTION HORSE OWNERS

There's a Master Horse Feed that's right for your horse



There are four different Master Horse Feeds each formulated for a particular purpose, each designed to keep your horse in top condition. This ensures you a choice of feed that's right for your horse.

For the facts on horse nutrition and suggested feeding programs, ask for the Master horse booklet.

It's results that count!

THE RIGHT FEED FOR YOUR HORSE IS
Nutritionally Balanced for Top Performance

- MASTER HORSE KRUNCH CUBES
- MASTER HORSE SUPPLEMENT PELLETS
- MASTER SWEET HORSE FEED
- MASTER COMPLETE HORSE FEED
- MASTER RACE HORSE OATS (Whole)
- MASTER RACE HORSE OATS (Crimped)

Drop In At Our Store and Pick Up Some
"MASTER HORSE FEED" SOON

"WE ARE NOW LOCATED IN OUR NEW STORE"

Watch for Special Announcement regarding our Special

Official Opening Days late in November.

SPECIAL PRICES — SPECIAL MERCHANDISE — SPECIAL ENTERTAINMENT

MASTER FEEDS

STEWARTTOWN

R. R. No. 2, Georgetown

DIAL 877-3512

ZENITH INTRODUCES CHROMACOLOR

A REVOLUTIONARY NEW SYSTEM

IN COLOR TV

The revolutionary new Chromacolor picture tube, with Zenith's patented black-surround principle, brings you a color TV picture more than 100% brighter than any previous giant-screen color TV.

Here's how it works! Every giant-screen color picture tube is covered with tiny red, green, and blue dots that make up the color TV picture. Previously, they have been placed close together on a gray background. But now, Zenith, in the patented Chromacolor picture tube, has made the dots smaller and surrounded them with jet-black. This Zenith patented black-surround screen together with precision electron beam tracking and increased light-transmission tube face — brings you a brighter, color picture, greater definition and sharper detail than ever previously achieved in giant-screen color TV. Chromacolor... the dramatic difference you can see in color TV!



IF YOU HAVEN'T SEEN
ZENITH
CHROMACOLOR
YOU HAVEN'T
SEEN THE NEW
COLOR
TV

THESE 1970 ZENITH SETS FEATURE "CHROMA-COLOR"



25" GIANT-SCREEN
DIAG. 295 sq. in picture
remote control
color TV console
THE BLAKE • A6525W
Contemporary styled full
base console with the
exciting new look. Genuine
Walnut veneers and select
hardwood solids, exclusive of decorative
front.



25" giant-screen
DIAG. 295 sq. in picture
remote control
color TV console
THE BRAQUE • A6519W
Modern styled console
with the exciting new low
look. Genuine oil finished
Walnut veneers and select
hardwood solids, exclusive of decorative
front.

G/S TELEVISION

Georgetown Market Centre

877-9541

OPENING
SOON
IN GEORGETOWN

ANOTHER STORE OF

HOUSE OF ORIENT CARPETS

158 Main St. North At Moore Park Plaza

Many Georgetown residents have already visited our main store at Roseland Plaza, Burlington. Now, you will be able to shop right here in Georgetown from the finest selection of Floor Coverings, Draperies, etc. available anywhere.

WATCH FOR GRAND OPENING SPECIALS

We are opening soon and will bring you fantastic savings on

Quality Broadlooms, Floor Coverings
and Draperies, etc.