

Parade, Council Greetings on Closed Circuit TV Show

Georgetown Cable TV customers will view their first locally-originated closed circuit, telecast Saturday when the company will pipe an hour long program into cable users' homes via Channel 5.

The program will include greetings from members of the sitting Georgetown council, as well as incoming members, and the December 7 Georgetown Santa Claus parade.

Councillors' messages were put on tape at a special taping session Saturday morning in the council chamber.

A Georgetown Cable TV spokesman said cable customers will get more locally originated programs as the firm gets established and the viewing audience grows. It's the equivalent, he said, of Georgetown having its own television station.

THE MAIL BAG

THURSDAY, DEC. 19th, 1963
PAGE 6

Publicity Helped, Adoptions Increased After Conference

Dear Sir:
90 Stinson St., Hamilton, Ont.

May I on behalf of the Board and Staff of the Catholic Children's Aid Society of Hamilton-Wentworth express our sincere appreciation for your participation in the Press Conference on Adoption which was recently held by the three Children's Aid Societies in this area: The Children's Aid Society of Hamilton-Wentworth, The Children's Aid Society of the County of Halton and our own Society.

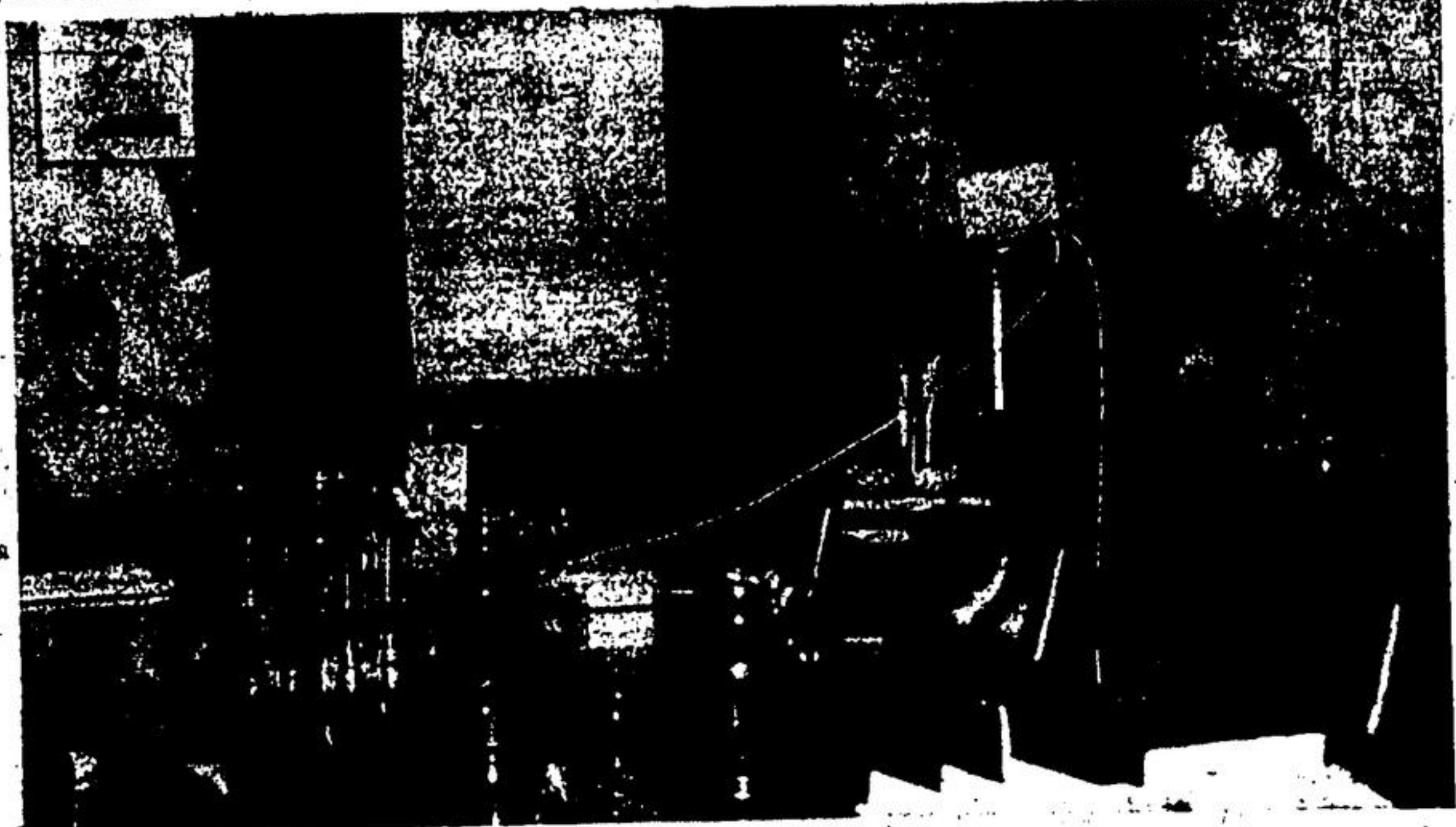
We most appreciate your co-operation and assistance in bringing to the public in this area the critical needs in adoptive homes. This is particularly a pressing problem for our Society since we have a number of children who are in need of adoptive placement immediately. Through the efforts of your newspaper, many people in this community have been made aware of this need. For example, within one week of the Press Conference our adoption workers informed me that they had received eight new inquiries for adoption. When you consider our Agency usually receives approximately 15 applications for adoption in one month, you can see that this was quite a large increase. While these adoption applications will go a long way towards placing the children available for adoption, there continues to be a critical need for more and more adoptive homes.

Please be assured of our willingness to cooperate in any future programmes you might like to initiate in respect to adoption or other areas of our service.

Once again, my own personal thanks with those of the rest of the people at the Catholic Children's Aid Society for your wonderful assistance and co-operation in this project.

Yours Sincerely,
(Miss) Georgina J. Gibbons,
Local Director.

BRAMPTON
Discount Shoe Store
AND BARGAIN BASEMENT
23 MAIN STREET NORTH BRAMPTON
SHOP AND SAVE
— Discount Prices on —
FAMILY FOOTWEAR AND LADIES' HANDBAGS
Where Quality and Low Prices Meet



TAPING SESSION IN COUNCIL CHAMBER — From left: councillor-elect Donna Denison, Mr. Bell of Georgetown Cable TV, and technician.

Paper Lion Makes Unique Decoration

A paper lion lurking beneath the Christmas tree this year is a sure sign that imagination has joined the holiday gift-giving spirit.

A lion made of wrapping paper, ribbon, yarn and a paper plate is one of the hundreds of new and exciting gift-wrapping ideas, suggested by Coult's Hallmark Cards.

"The trick," said Marilyn Lilly, "is to look at an object to be wrapped and see something more than a box. You have to see how rectangles can be made to look like an animal or everyday object just by combining everyday items with plain or fancy wrapping papers and ties."

"Once you acquire that first talent, you can make a gift look like anything from an elephant to a castle — and have lots of fun doing it."

As a beginning, Mrs. Lilly outlined the steps in wrapping the paper lion.

- 1) Thread yellow yarn around the outer inch of a yellow paper plate, covering the bordered area on the plate, to serve as the lion's mane.
- 2) Cut two round circles from white paper and draw pupils with black magic marker. Paste these to the paper plate on the smooth surface just above the centre line.
- 3) Cut a triangular nose

from orange paper leaving one leg of the triangle much longer than the other two. Glue this to the middle of the paper plate with the long end tucked between the eyes.

4) Cut two circles from pink paper and glue them to the paper in the area of the 'cheeks' to form dimples, then glue black string from these two dimples in a semi-circle around and below the nose to form a mouth.

5) Wrap the box lightly in yellow paper.

6) Glue or tape the paper plate 'head' to the top of the box. Near the bottom of the plate, slip several lumps of cotton between the box and the plate to keep the lion's chin from nodding under.

7) Tape a piece of yellow yarn 8 or 10 inches long and frizzled at the end to the bottom-back of the box to form the tail.

8) Cut paw-shaped feet from gold paper and glue them to the bottom of the package so they extend about one inch in front of the edge.

9) Tie a large red ribbon around the middle of the package and place a large bow just below the lion's face and you have it — a colorful and imaginative Christmas decoration.

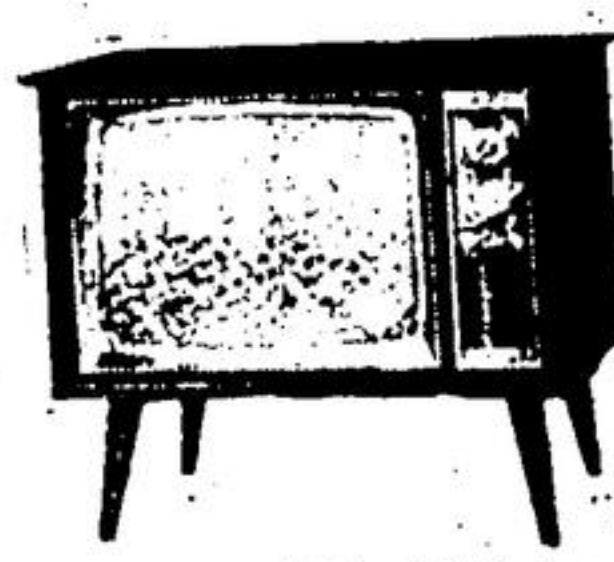
IN LITHUANIA
Lithuanians cover their Christmas Eve dinner table with layers of straw in memory of the night in Bethlehem. An unconsecrated wafer, symbolizing the love, harmony, and good will of the season, is shared by all the members of the family.

AT WIGO Santa's Special Selections

GIFTS TO PLEASE ALL THE FAMILY

All I Said Was-How Would You Like A Color TV for Christmas?

PANASONIC — Plays Things Your Way



COLOR Console
CY-92DC — 'The Silvercrest'
Distinctive, luxury look PANASONIC COLOR console with Color and Tint controls, Color indicator light, Keyed AGC & automatic degaussing, 12 solid-state devices and 21 tubes. Walnut.
\$599.95

COLOR PORTABLE
CY-43DC — 'The Pennington' — Smart, Firm-Line Design Pana-Color Portable TV; Panasonic brings you new portable color TV with advanced engineering. 'Pana-Color' in which rare earth phosphors are projected onto the picture tube, for true, bright color.
\$549.95



ALL THE LATEST RECORDS AND ALBUMS IN OUR ENLARGED RECORD BAR

Old-Fashioned Christmas Tendered Museum Guests

Members of the Halton County Museum Board and supporters of the museum were entertained in the surroundings of a traditional Christmas last week.

While a huge elm log fire burned brightly in the hearth of the main museum building at Kelso, candles flickered around the walls — in brightly colored glasses and wrought-iron chandeliers.

Major H. J. Newman, director of the museum, and Mrs. Eria Brittain, curator, welcomed the guests as they arrived. Mrs. Brittain wore a traditionally styled dress of blue and gold brocade decorated with 100-year-old black corded silk braid. The low neckline was decorated with a cameo in a gold setting.

Refreshments were made earlier in the day by Mrs. Brittain and her staff of teenage summer guides who were called in for the occasion. There was cheese and crackers, cold meats, sandwiches, Christmas cake and cookies, tea and coffee.

Guests were served by the girls wearing their guide uniform of 'traditional' skirt. This was adopted as a compromise between the old and the very new consists of a short skirt gathered into two flounces and a polka-dot blouse with drawstring neckline and sleeves. Guests came from all around the county and included the chairman of the museum board, Ralph Wakely and Mrs. Wakely, Mrs. R. L. Whiting, wife of the Liberal MP for Halton County, Jim Snow, Conservative MP for Halton County and Mrs. Snow; Herb Merry, chairman, of the

Lakeview Discount Centre
176 Main N. — Acton
● Paint
● Wallpaper
● Pre-Finished Panels
● Flooring
● Carpets
FREE DELIVERY
533 1190
Open Sat. to 5.30 p.m.

SHIPPING MOVING

BY LAND, AIR, SEA AND RAIL OVERSEAS PACKING AND CRATING MODERN HEATED STORAGE LOCAL & LONG DISTANCE MOVING 24 HOUR SERVICE — call — WORLD WIDE SHIPPING MOVING 889-6269 METRO-TORONTO

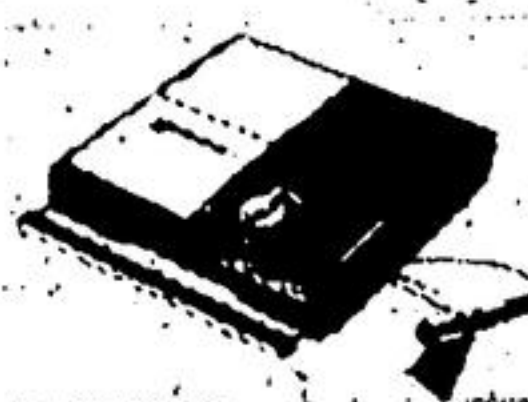
The Power Pal' Model RQ 1135

All transistor capstan drive portable tape recorder. Light weight and compact. Battery powered. Features are automatic recording, level control. Two speeds (3 1/2" & 1 1/2" ips.) Fast forward, remote microphone and 3" P.M. speaker, 4 lb. 9" w., 3 1/4" h., 10" d. Complete with accessories.
\$47.50



PANASONIC PORTABLE CASSETTE

RQ-2035 'The Oakwood'
A superb cassette portable. Automatic recording level control — Sound monitoring. Fast forward and rewinding. Cassette 'Pop-up' change. 5 1/2 lb., 9" w., 2 3/4" h., 10" d. CSA approved.
\$74.95



PANASONIC TAPE RECORDERS

\$94.75
R9156 — Handsome portable tape recorder. Vertical type. AC or battery powered. Big 3 1/2" dynamic speaker — (3 1/2" x 1 1/2" ips.) Push button operation. 3 digit tape counter. 5" reel. Panasonic's Easy-Matic 3-position switch.



Panasonic RECORD PLAYER

"The Combo" RADIO PHONO Combination **\$46.95**
Model SG 350
Compact solid state portable phono with AM radio. Fine 2-speed phono and quality AM radio delivers true fidelity tone from its 3 1/2" dynamic speaker. Easy to take. Remarkably light. 4 1/2 lb. with 6 D size batteries. 10 1/2" w. x 3 1/2" h. x 11 1/2" d. Grey or antique white.



WIGO TELEVISION & APPLIANCES LTD.

NORTH HALTON'S LARGEST TV AND APPLIANCE OUTLET

32 MAIN ST. N. PHONE 877-3376

Make this a RECORD Christmas

You Can Choose from . . .

ONE OF THE FINEST AND LARGEST SELECTIONS OF RECORDS AND ALBUMS IN THE AREA AT WIGO'S ENLARGED RECORD BAR