

**SIX WAY RACE IN WARD TWO**



**JIM COURT**



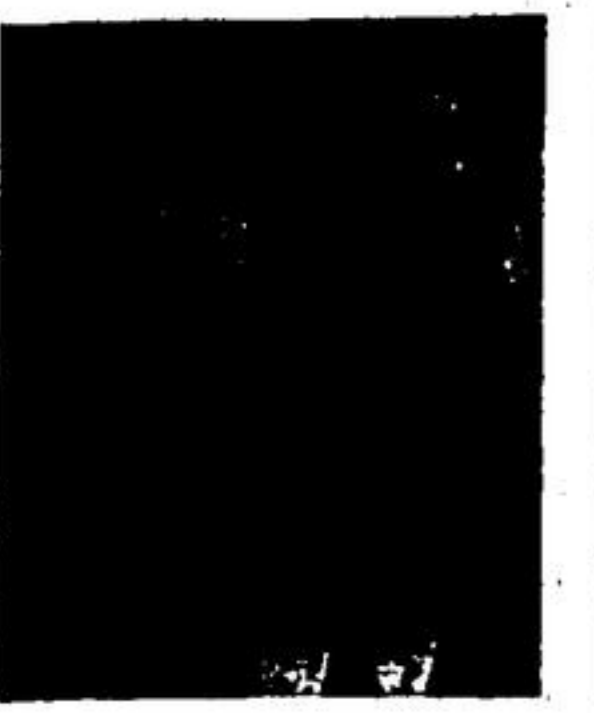
**DONNA DENISON**



**JAMES EMMERSON**



**JOHN HOLE**



**BILL SMITH**



**JIM YOUNG**

THREE SITTING MEMBERS, John Hole, Bill Smith and Jim Young, a former member of council, Jim Emmerson, and two new faces, Jim Court and Donna Denison are seeking Georgetown's two Ward II council seat.

**WINTER SAFETY**

Help the Red Cross Water Safety Service to help others stay alive while skating, fishing and walking on ice.

**PEOPLE ON ICE**

At least FOUR inches thick. Use shallow water areas — pools and ponds. To measure, chop a hole. When on ice, have a buddy.

**AVOID**

Ice formed over flowing water. Ice near open water. Honeycomb ice — springtime. Ice that has not been tested.

**VEHICLES ON ICE**

Thickness — 12-36 inches. With continuous travel, ice will weaken.

Sudden braking increases weight pressure. Slush ice is half as strong as clear blue ice.

**TO RESCUE OTHERS**

Think clearly, act quickly. Get down to spread your weight. Extend your reach with a belt, scarf, jacket, pole, line, human chain.

**ICE FISHING**

Overcrowding is a problem. Sit but on a wide base to distribute weight. Danger periods, late fall and early spring.

**SELF-RESCUE**

Don't panic, call for help. Extend arms along ice surface. Flutter kick and wiggle forward. Roll sideways to safety, stay down. Carry a pole to straddle the hole, if you fall through.

**Retired Farmer Was Halton Manor Resident**

A farmer until he retired and moved to Georgetown in 1940, John Robert Campbell, 78, died at Halton Centennial Manor on November 4th.

Mr. Campbell, who was the son of Donald Campbell and Mary Jane Lyons, operated the family farm at Lot 1, Townline, Erin after his father and was a member of Melville United Church, when he lived there. He had been a member of St. John's United Church since moving to town.

In June he sold his home on

Main Street South and moved to Halton Manor.

His wife, Myrtle Irene Nelson died 28 years ago. He leaves three children, Margaret of Tucson, Arizona, Donald of Seattle Washington and William of Ottawa; three grandchildren, Margaret, Betty and Scott Campbell of Ottawa; and a sister, Mrs. William Sinclair (Elizabeth) of Georgetown. He was predeceased by two sisters, Mamie and Mrs. D.J. Sinclair (Sadie.)

Rev. Robert Scrivens conducted the funeral service at the Harold C. McClure Funeral Home, 34 Edith Street and interment was in Greenwood Cemetery. Pallbearers were Clayton Rogers, Alex Jackson, and Dun-

THE GEORGETOWN HERALD

THURSDAY, NOV. 28th, 1968

PAGE 10

can MacMillan and three cousins Frank Patch, Starrett Leslie and Howard Dolson.

**CONCRETE GRAVEL BUILDING SAND ROAD GRAVEL FILL and TOP SOIL GARNET "BUD" HAINES**  
Glen Williams - 877-3202



**VOTE ELLIOTT MAYOR**

**ELLIOTT, John A. X**  
CNR STATION MASTER

Employed with CNR since returning from overseas service World War II

3 Children, 2 in high school and 1 attending Western University

10 Years Business Ownership experience

8 Years Georgetown Council (4 years Finance Chairman)

4 years Reeve and 1 year Deputy Reeve on County Council (a form of regional government)

Long range economical planning

Firm, patient control to bring the best from every Councillor

Industrial promotion to match housing release

Read Improvement action, such as 9th line Recreational facilities and programmes for all ages

Lower tax mill rate to produce same revenue with new assessment

Independent from party politics or states

Concerned with the welfare of all residents

Strong, honest, sincere leadership

For Transportation Phone 877-4115 or 4581

**ERNIE BODNAR**

HALTON COUNTY

**BOARD OF EDUCATION**

**Qualifications**

- Graduate University of Toronto - Civil Engineering '55
- Deputy Town Engineer - Town of Mississauga
- Past President and Member Georgetown Lions Club
- Resident of Georgetown — 11 years
- 4 Children in Georgetown school system
- Georgetown Public School Board appointee to Georgetown District High School Board
- Currently vice-chairman Georgetown High School Board



Chairman Building Committee: currently completing plans for extensive addition to Georgetown High School, including top quality playing field.

Holds a progressive philosophy on education wherein the policy will provide the pupil from K - 13 with the most desirable program, staff and facility for the utmost development of mind and body within the economic potential of the county.

**CHOOSE WISELY —VOTE BODNAR**

**Would You Like to Know How Your Tax Dollar is Being Spent on Education ?**

IF SO — ON DECEMBER 2nd VOTE

**Hubert CLOHECY**

AS YOUR R.C. TRUSTEE TO THE HALTON COUNTY BOARD OF EDUCATION

**QUALIFICATIONS:**

Past chairman of the Ancestor Separate School Board — served on this board for three years. Teacher for four years. Honour graduate University of Western Ontario. Two years Post Graduate work — University of Windsor. Resident County of Halton for three years. Married — six children. Occupation — Sales Manager. President of St. Gabriel's Men's Club, Burlington.

I want to provide a line of communication between Halton County Board of Education and those who pay the bills; namely the ratepayers, especially all The Separate School Supporters of Halton County.

FOR INFORMATION OR TRANSPORTATION CALL 437-0357 or 637-1223



**VOTE Ken MARSHALL FOR ESQUESING COUNCIL**

FOR INFORMED REPRESENTATION **ELECT G. V. SIGURDSON HALTON COUNTY BOARD OF EDUCATION**

- QUALIFICATIONS**
- Chairman — Public School Board.
  - ELECTED MEMBER TO Public School Board for 5 years.
  - Member for 10 months — (Feb. - Nov. 1968) Interim School Organization Committee to plan and prepare comprehensive report to assist Halton County Board of Education become an early and effective organization.
  - Georgetown resident 11 years.
  - Father of two children.
  - Air Canada employee 23 years.



**POLICY:**

- Support the principle of "Equality of Educational Opportunity for all students in HALTON county regardless of location or economic circumstances."
- TO SAFEGUARD the interests of the Georgetown STUDENTS and RESIDENTS.
- To ensure by vocal or other means realistic utilization of the tax dollar in the Administration of Education in HALTON county for the benefit of both students and residents.

FOR RIDES AND INFORMATION — (RAIN OR SHINE) 877-4679

**MY THANKS:**

FOR AN ACCLAMATION

AS

**REEVE OF GEORGETOWN**

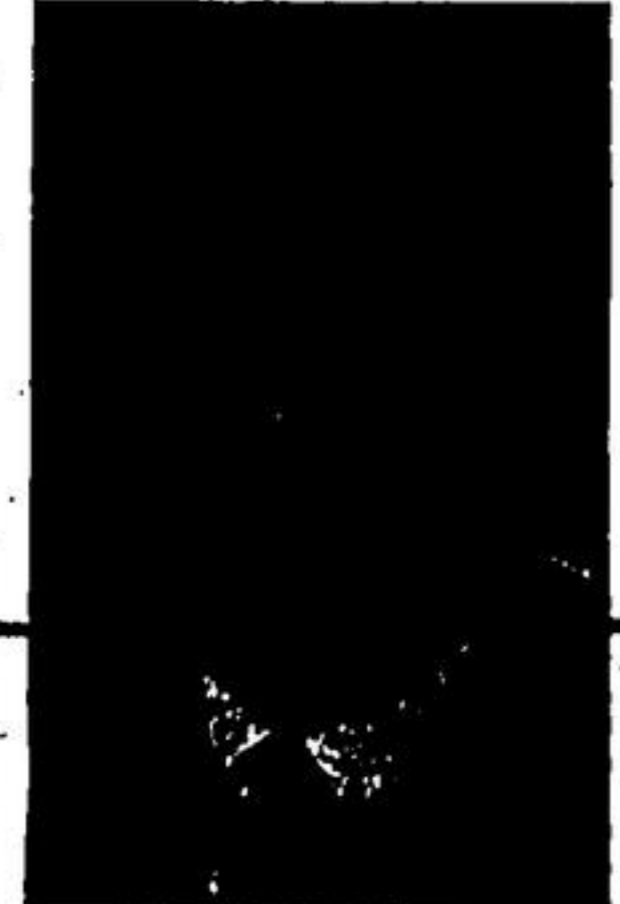
FOR 1969 AND 1970

I will do my best to help conduct Georgetown's business with the new council.

MERRY CHRISTMAS AND A HAPPY NEW YEAR TO ALL GEORGETOWN RESIDENTS.

**William F. Hunter**

My real estate office will be open on election night for returns.  
PHONE 877-4441 or 877-2204



**For MAYOR W. EMMERSON**

**I Pledge To You:**

- TO CURB CAPITAL EXPENDITURES
- TO REDUCE OUR CAPITAL DEBT — NOT ADD TO IT.
- TO WITHHOLD THE RELEASE OF ANY LANDS THAT WOULD MEAN MORE DEBT TO THE TAXPAYER
- TO WORK TOWARDS A LOWER MILL RATE
- TO EXPLORE WAYS AND MEANS TO ADD TO THE BEAUTY OF OUR TOWN.
- TO SEEK EXPANSION AND DEVELOPMENT OF OUR INDUSTRIAL AREAS.
- TO SUPPORT AND IMPROVE CULTURAL AND RECREATIONAL FACILITIES.
- TO GIVE THE TIME NEEDED TO DO THE JOB WELL.
- TO WORK FOR YOU WITH ENTHUSIASM, HONESTY, IDEAS AND THE ABILITY TO GET THINGS DONE.

Your Support December 2nd Will Be Appreciated

**FOR TRANSPORTATION CALL 877-6131**

**IN THE INTEREST OF SOUND ADMINISTRATION**

Your Vote and Support Is Solicited To Elect Me TO COUNCIL FOR WARD 3

**J. F. TYRRELL**



**For a Fair Share of:- ROADS IMPROVEMENT PARKS AND RECREATION**



For a Ward 3 Voice in Local Affairs

**MAKE WARD 3 COUNT**



A Ward 3 Representative For Ward 3

YOUR SUPPORT IS REQUESTED

**PHIL SIDDALL FOR COUNCILLOR WARD 3**

For Transportation — Information Phone 877-5675