

Pioneer Atmosphere Halton Museum Entertains at Tea

A roaring fire crackled in the stone fireplace. Candles glowed and decorated the tea tables. A Christmas tree in the corner was decorated with paper strips, string popcorn and hand-made paper balls.

The Christmas tree was surrounded by children's gifts, be-
haved left there by St. Nicholas — including antique dolls, a doll bed, stroller, bike and cradle all close to 100 years old.

Sound like a pioneer Christmas atmosphere — it was.

AMIDST ANTIQUES

The scene was Halton County Museum, a large converted barn on the Duff Alexander home-
stead at Kaleso Conservation Area. While the dress of the guests, the refreshments and the chatter was modern, everything else remained antique as mu-
seum and board members, coun-
ty councillors, conservation au-
thority officials and other in-
vited guests enjoyed the annual
Museum Board Christmas recep-
tion in the old-fashioned sur-
roundings of hundreds of mu-
seum exhibits.

Guests enjoyed the perfect set-
ting as they took time out from
the hustle-bustle of the year-

season to relax and reflect on
the pioneer days in Halton.

IN RUSTIC BARN

During the afternoon several
of the dignitaries spoke of the
year now drawing to a close and
praised the Museum Board for
its work to date on establishing
a museum for the county in the
rustic barn overlooking Glen
Eden Lake.

Major Hal J. Newman, Geor-
getown, the museum curator,
welcomed the guests and intro-
duced Halton Warden Herb
Merry of Oakville, former chair-
man of the Museum Board. Mr.
Merry recalled how the barn
looked when he and councillors
Jack Milne, Archie Service and
Will Hird came to inspect it
as they were searching for a
museum site.

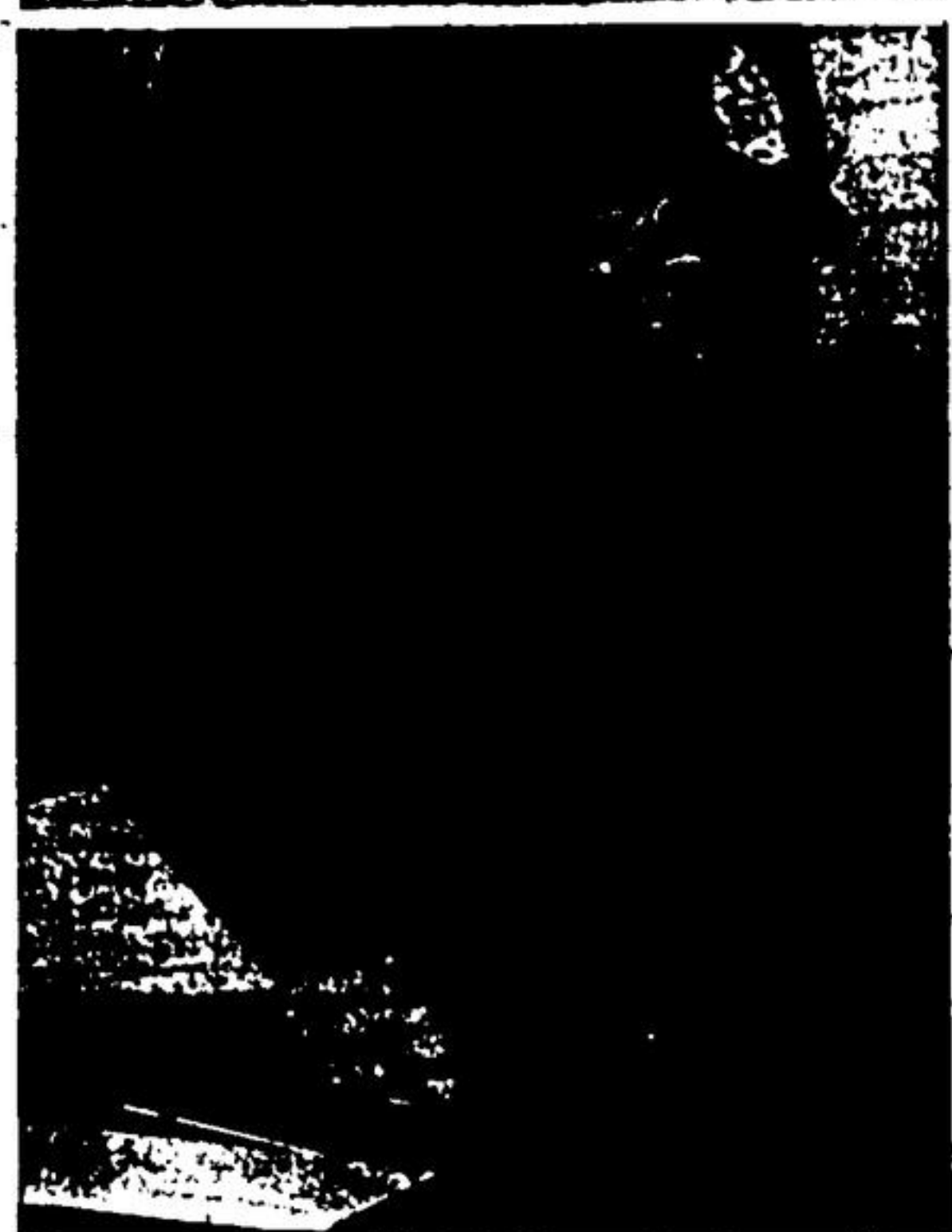
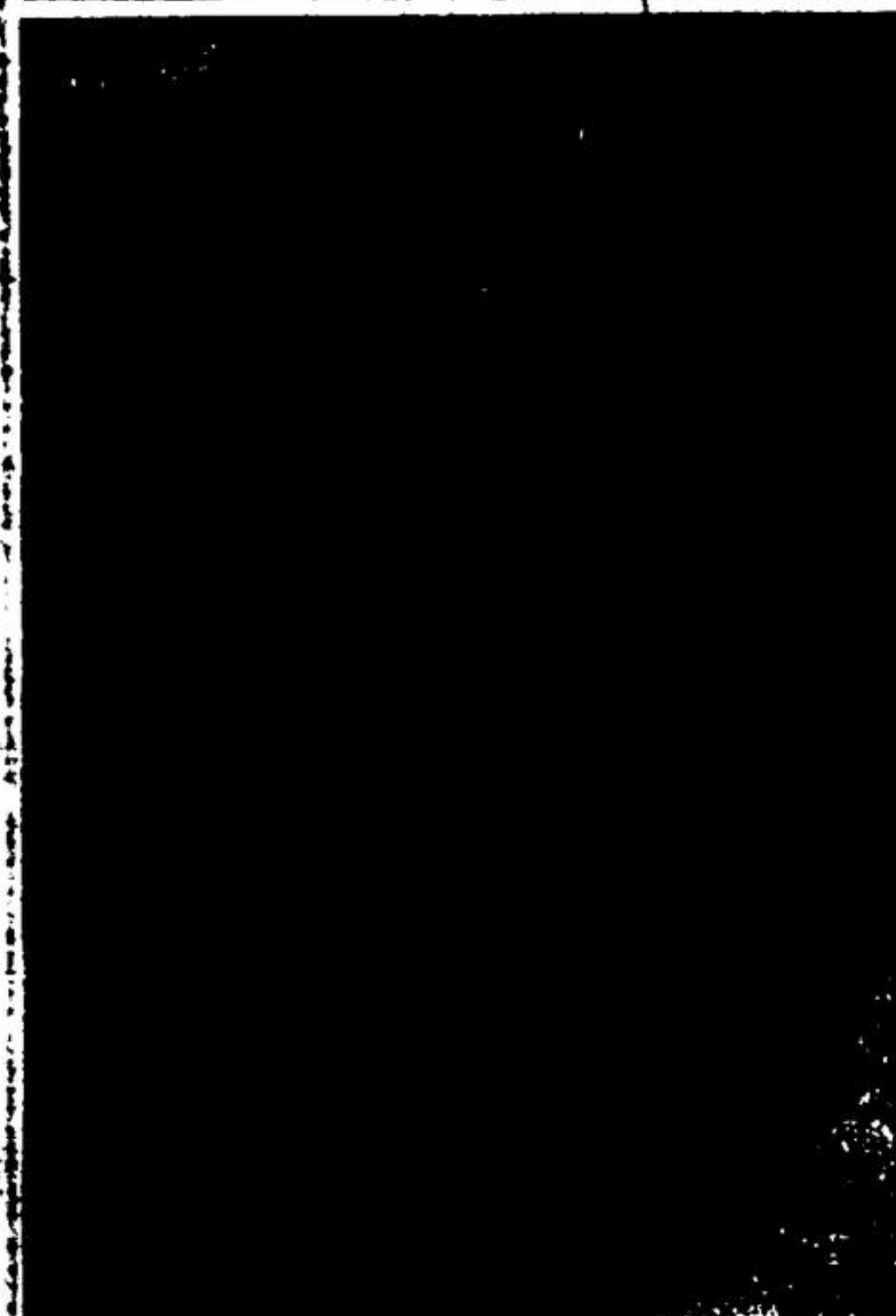
"What was a cowbarn has
been turned into a palace of
history and a museum of art,"
he declared. Looking to the
future, he suggested if the Mu-
seum Board makes as much
progress in the next few years
as it has in the past four or
five, "We will have not one of
the best, but THE best museum
in Ontario." He suggested the
board members were the most

...considered.
Lester Whiting of Oakville, Thursday, December 10,
1955 Museum Board chairman,
said he had hoped the museum
would be able to negotiate with
the Steam-Erv organization for
a joint venture at the Kaleso site,
but the talks were not complet-
ed yet. He extended appreciation
to all for their co-operation.

Never was electric light used
on metal trees. Use all-steel
or foodlight instead. A return
lock can bring death, destruc-
tion or suffering in an instant.



WIGO TELEVISION and APPLIANCES LTD.
MORRIS AND ED
11 Main St. N. — Georgetown



THE OLD YEAR IN PICTURES

SEPTEMBER

TOP: Georgetown council releases all remaining Delrex Development land for building in exchange for purchase of piece of industrial park. CENTRE LEFT: Miss Marion Prior, an English school teacher arrives to take local public school class as Georgetown teacher Robert Pinkerton goes overseas in exchange program. BOTTOM LEFT: High school parking lot is lined with light motor bikes as the snarling two wheelers reach epidemic stage. CENTRE RIGHT: Guelph Street between Maple Avenue and Rexway Drive is scooped up and reconoured as major highway reconstruction program starts. BOTTOM RIGHT: Georgetown based C Coy. of the Lorne Scots gets new company commander in Capt. Donald Egan.

LET'S PLAY BRIDGE

BY BILL COATS

To give the opponents a trick in a suit, while you have a high card in the suit, goes against the grain of most bridge plays. However, this is often the easiest way to make a contract. You give up a trick while you have control of the hand. The play is called a "ducking" play.

A good example of this occurred last week at a duplicate bridge game in Toronto. My wife and I defended the hand and declarer went down to do East, not because of what we did but as a result of what declarer did not do.

Here are the hands.
Dealer — West.
North-South vulnerable.

North	South
S-K J 6	H-Q 9 6
H-A K 10 7 3	D-4
D-4	C-A K 8
West	East
Q 4 3	S-10 7
S-4	H-Q 9 6
K-Q J 10 8 3 2	D-5
D-5	C-Q J 10 8 3 2
South	North
A-8 5 3	H-7 2
H-7 2	D-A 9 7
D-A 9 7	C-7 4
C-7 4	

West led her singleton club, hoping for a quick ruff in order to set the contract. The lead, however, gave declarer a good chance to make his slam. The club was won in dummy and a spade led to the ace. A second spade lead was made and a successful finesse taken in dummy. The spade king removed West's last trump.

Declarer played the heart ace, just in case there was a singleton queen around somewhere, but this was not the case. At this point, declarer went astray.

In order to take the heart finesse, which would have given him all the tricks, he led a diamond to the ace and tried the heart finesse. This lost to East's queen, and East quickly led a diamond, to defeat the contract by two tricks.

How should declarer have proceeded? After taking the heart

ace, declarer should simply have led a low heart from dummy. East can win his heart queen but no lead can defeat the slam. Declarer can win a diamond re- turn with his ace and discard two

GREETINGS
We wish all whose friendship and good will we cherish a very happy New Year!

**JIM BELL
GLEN TAXI**
PHONE 877-2432

EMPLOYERS

Canada Pension Plan Deductions Begin Jan. 1st 1966

Employers must deduct contributions from employees who are aged 18 to 70 and paid at a rate equivalent to more than \$600 a year.

Contributions of 1.8% are payable on earnings of between \$600 and \$5,000 a year as set out in The Canada Pension Plan Contribution Tables.

Employers must match contributions deducted from their employees and remit the combined amount. Instructions for remitting are contained in The Canada Pension Plan Contribution Tables, sent to employers in November. If you did not receive these Tables, or if you have any enquiries regarding the Plan, contact your nearest District Taxation Office.

The Canada Pension Plan

Issued by
Department of National Revenue, Taxation Division
by authority of
The Minister, The Honourable E. J. HENSON