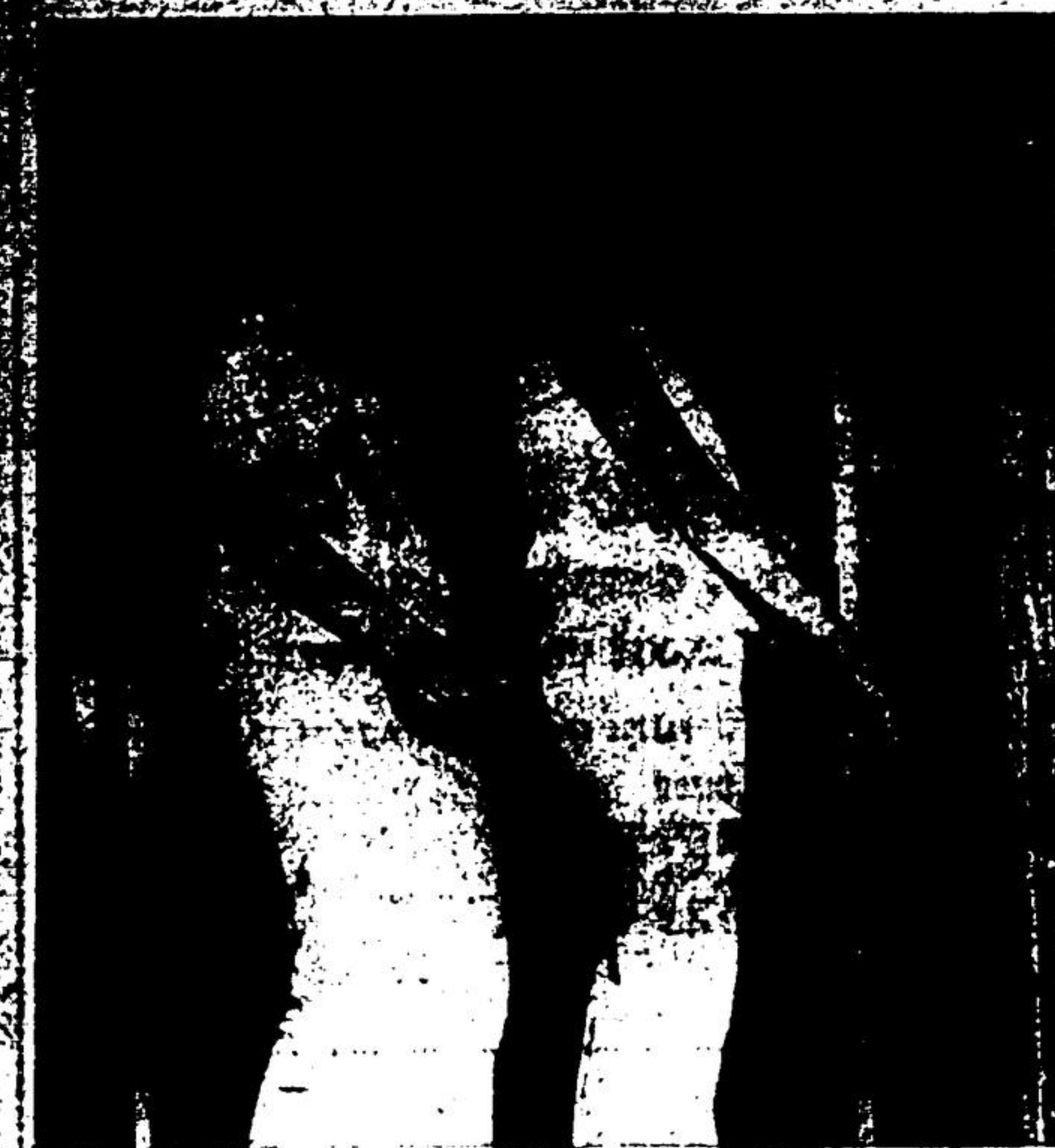


Joins New Fad, Purple Candle Club Adds A-Go-Go Dancers



Opening night at the Purple Candle Club was a fitting finale to the summer holidays for area high school students. A Go-Go dance and midnight special at the Orange Hall in Brampton both drew over 200 enthusiastic dancers.

The air-conditioned hall did not stop the teenagers from jerking, twisting, and shimmying to the music of The Rogues, special guests Shaws and Jay Jackson, Saturday night and The Oopkiks during the early hours of Labour Day.

In keeping with the latest fad, the A-Go-Go craze, the club installed two 'cages' which

during performances, are filled by two pretty Bramptonians, Judy Norton, 17, and 'Gloss' McKenzie, 17.

Wearing bell-bottom trousers and angel blouses, the pair, one in each cage, demonstrated how easy it is to dance in the current hit parade songs without dislocating bones.

Miss McKenzie is in Grade 10 at Central Peel Secondary School and has an eye on becoming an airline stewardess. Miss Norton is doing secretarial work at Flexonic Corp. of Canada.

The Go-Go team developed

after the pair became friends at a dance.

"I love it," said Miss Norton. "I have never taken dancing lessons but it is one thing I have always wanted to do," she said.

Miss McKenzie said the closest a relative has been to being a professional dancer was her aunt who once won a jitterbug contest. She didn't say if her aunt is now a 'beep' twister.

"I would like to see more girls on our dance team," injected Miss Norton. "I don't think we will ever go anywhere, but we think it is a lot of fun."

Car in Triple Flip Two Youths Injured

A Georgetown youth suffered a fractured clavicle when the car he was riding in left Chalmersway at No. 17 and flipped over three times.

Police said the car, driving west on the side road, was driven by Randall Phillips, 18, also of Georgetown. The car went onto the shoulder of the road approaching a slight curve and went out of control. The front wheel dug into the shoulder and the vehicle flipped three times, end-over-end, coming to rest on its wheels on the south side of the road.

Phillips suffered multiple lacerations, and a passenger in his car, Herbert Lockhart, also of Georgetown, suffered a fractured clavicle. They were both treated at Peel Memorial Hospital and released.

Another district resident, Leta Beattie of Terra Cotta, was treated at Peel Memorial Hospital and then transferred to Toronto General following a two-car collision at Amelgrove on Hwy. 10 Tuesday.

She suffered serious injuries after the car she was riding in, driven by Douglas Dennis, also of Terra Cotta, careened across the lawn of J. A. Parkinson's home. The other car involved was driven by a Keeselgrove man, Thomas Hoek.

BEAVER LUMBER

Cash and Carry

... YOU'RE WITHIN SAVING DISTANCE OF BEAVER LUMBER ...

BEAVER TRUCK LOT

SAVINGS
SOUND DRY UTILITY

2x4's 84.50

PER 1000 BO. FT. UTILITY CONSTRUCTION

2 X 4'S	84.50	97.50
2 X 6'S		101.00
2 X 8'S		111.00
2 X 10'S		123.00

Utility grade not stocked at all 80 stores

White Pine **BARN BOARDS 105.50**

1 X 6, 1 X 10, 1 X 12 Per 1000 Bd. Ft.

UTILITY CONSTRUCTION

4x8 & 4x6 Spruce 1 x 6 87.50 102.50

THE PRICE IS RIGHT

Compare... Then Save Time and Gas. Buy At Your Nearby Beaver Lumber.

It makes good sense when you are going to pay cash and haul your own building materials in quantity, that you shop at a nearby Beaver store and make a further saving on your time and gas. There are 80 Beaver Lumber stores in Ontario so when you shop Cash & Carry at a neighborhood Beaver store you save time and gas. We have already trucked the materials close to your home. You also are assured of the same friendly service and personal attention to your needs that have been a way of life for over 50 years at Beaver Lumber stores across Canada.

80 NEIGHBORHOOD STORES TO SERVE YOU!

INSULATION BATT 2" 50 SQ. FT. CANYONS 3" 60 SQ. FT. CANYONS	TEN-TEST INSULATING BOARD 7/16" x 4' x 8' natural—1.50 7/16" x 4' x 8' primed—2.50 50 SHEETS OR MORE 36 to 48 sheets 1.50—2.50	GARAGE 12' x 20' standard garage complete with materials and plans. 199.
--	---	--

NEW SHIPMENT FROM THE FAR EAST

MAHOGANY PLYWOOD PANELLING
RANDOM-GROOVED
4' x 7's
4' x 8's

2.49

35 PANELS OR MORE

PREFINISHED RANDOM-GROOVED 25 PANELS OR MORE
4' x 7's 3.39
4' x 8's 3.79

ANY QUANTITY
32" x 84" PANELS UNFINISHED MAHOGANY 1.79 EACH

MASONITE PREGRETTED HARDBOARD
1 1/2" x 4' x 8' SHEETS
SMALLER LOTS — 1.57

1.49

10 per sq. or more

DOUBLE COATED BAYNOCOTE WHITE CEILING TILE
Full Half Inch
Easy fitting T & G Joint

6.55

A CANYON 64 SQ. FT. ANY QUANTITY

BEST BRAND VINYL-ASBESTOS FLOOR TILE
Jamaica, White or Sahara Sand Colors

9 3/4

9" x 9" TILE CANYON LOTS

WOODGRAINED CHERRY GASLIGHT HARDBOARD PANELLING
Random V-Grooved

4' x 7's
4' x 8' — 4.55
25 or more

3.98

10 to 24 panels 4.50 — 4.85
1 to 9 panels 4.50 — 5.15

WOODGRAINED CHERRY GASLIGHT HARDBOARD PANELLING
Random V-Grooved

4' x 7's
4' x 8' — 4.55
25 or more

4.25

10 to 24 panels 4.50 — 5.15
1 to 9 panels 4.70 — 5.35

POPLAR UNDERLAY
WATERPROOF
1/2" x 4' x 4' — 50 PCS. OR MORE
LESS THAN 50 — 1.20

1.22

EXTRA STRENGTH GRID PATTERN Galvanized Roofing

30 U.S. GAUGE
INHIBIT PROTECTION
UP TO 12' LENGTHS
11' to 32' Lengths—10.15 x sq.
30 to 60 sq. — 8.79 x sq.
Less than 30 sq.—10.30 x sq.

9.49

A SQ. 70 sq. or more

RED AND GREEN 310 LB. 3 IN. 1 ASPHALT SHINGLES

5.67

Standard Colors Self-Seals All Colors

6.32 x sq.
7.10 x sq.

NEED CASH?
NO OUTSIDE FINANCING

You can't directly and confidentially with the Beaver Lumber manager. Ask about Beaver Lumber's Budget Plans that let you enjoy Cash and Carry savings on quantity purchases... Terms as low as \$10 a month.

Many Important Items for Red Cross Business Agenda

A meeting of the Georgetown branch of the Red Cross last week touched on six of its various services during the business session.

LOAN CUPBOARD: Mr. Walter Brownridge of Maple Ave. and Mr. Howard Briggs, Upholsterer of Stewarttown, repaired two wheelchairs voluntarily. Mrs. V. M. Sinclair, 21 George St., will assist Mrs. E. Balkind in looking after this 'free of charge' service to the public.

BLOOD: The third clinic of the year will be held at Knox Church Hall in Georgetown on Monday, October 4th, 1965, from 3 to 4:30 and 6 to 8:45 p.m. New donors between the ages of 18 and 65 are needed.

INDIVIDUAL EMERGENCY AID: To assist the Halton county Health Unit, this service needs urgently DRIVERS, with years to take persons, who cannot get there otherwise, from and to hospitals, special-ists, etc. Eight cents per mile can be refunded for this 'Love Thy Neighbourly' job. Phone 877-9735 or 877-4424.

HOME NURSING: A Home Nursing Course is being planned. Particulars will follow in this paper. Anyone interested in making this course, phone Mrs. Mary Simpson, RN, 877-6518.

VOLUNTARY SERVICES: Anyone interested in helping at the blood donor clinic, water safety programme, campaign or in any other service of the Red Cross are kindly requested to contact the newly appointed chairman, Mrs. A. T. Pritchard, 877-3331. The former chairman, Mrs. Vicky Landry, resigned.

PUBLIC RELATIONS: With the help of Peel Supervisor, Mr.

THE GEORGETOWN HERALD
Thursday, September 16
PAGE 8

Clifford Johnson and his Red Cross Instructors and Leaders the branch hopes to be able to have a 'float in Santa's Parade' this year. 'STAY OFF THIN ICE' will be their motto.

The Go-Go team developed

KEN NASH

PLUMBING and HEATING

- Water Softeners
- Water Systems
- Repairs & Alterations

TR. 7-2842

Attention Farmers

SOIL SAMPLES FOR SPRING PLANTING 1966

NOW IS THE TIME to have soil samples taken. If you are interested in this service please call us as soon as possible and we will look after it immediately. Also this is the time of year to have bulk spread fertilizer put on your hay and pasture fields. Many more farmers are following a fall fertilization program than ever before. "CONTACT US NOW." Try one or two fields and see the difference it makes.

CEMENT

Master Feeds (Stewarttown) are agents for Portland Cement manufactured by the St. Lawrence Cement Co. This cement is packed in special lined bags in which the cement will not harden.

Call Us For Your Supplies of

- SNOW FENCE ... and ...
- CORN CRIB WELDED FABRIC FOR STORING CORN

We also have in stock a good supply of **OTACO PLOW SHARES** FOR MOST MAKES OF PLOWS

We invite you to visit us at our display at the **GEORGETOWN FALL FAIR, SATURDAY, OCT. 2nd**

We sell and recommend MASTER FEEDS

MASTER FEEDS
STEWARTTOWN

Dial 877-3512 WE DELIVER Georgetown

ROSEDALE FLORAL

Flowers For All Occasions

WEDDING ARRANGEMENTS
Specialty Flowers and Funeral Designs

7-2952