

LOW LOW PRICES

All Prices in This Ad Guaranteed Through Saturday, June 22, 1963

A&P NECTAR

TEA BAGS

Reg. Price pkg 89c—SAVE 10c

pkg of 90 **79c**

IONA ORANGE & GRAPEFRUIT

MARMALADE

Reg. Price jar 43c—SAVE 4c

24-oz jar **39c**

SKIM MILK POWDER

A&P INSTANT MILK

SPECIAL I

3-lb pkg **79c**

A&P INSTANT (Just Add Water, Hot or Cold)

CHOCOLATE FLAVOURED DRINK

Reg. Price etn 39c—SAVE 4c

12-oz ctn **35c**

CANNED LUNCHEON MEAT

SPORK

Reg. Price tin 47c—SAVE 15c

12-oz tins **2 79c**

MARVEL BRAND

ICE CREAM

Reg. Price pint 25c—SAVE 5c

1-pint bricks **2 45c**

DUNCAN HINES DELUXE

CAKE MIXES

Reg. Price pkg 43c—SAVE 7c

19-oz pkgs **2 79c**

(White, Devil's Food, Fudge Marble, Burnt Sugar, or Spice)

FRESH FRUITS & VEGETABLES — ARRIVING DAILY

VIRGINIA, NEW CROP, TENDER, SPRINGHOLDS, NO. 1 GRADE



GREEN BEANS
2 POUNDS **29c**

FLORIDA, GOOD SIZE, TASTY RED CUTTERS, NO. 1 GRADE

WATERMELONS **79c**

CALIFORNIA VALENCIAS, FINEST FOR EATING, FANCY GRADE

ORANGES 3-lb cello bag **69c**

CALIFORNIA, TENDER, SWEET, NO. 1 GRADE

CARROTS 3-lb cello bag **29c**

FLORIDA, SWEET, NEW CROP, YELLOW

CORN FANCY GRADE 5 cobs **39c**

ONTARIO GROWN STRAWBERRIES, CUCUMBERS, HOthouse TOMATOES, RADISHES, GREEN ONIONS, HEAD LETTUCE, BUNCH BEETS, ARRIVING AT OUR STORES FRESH DAILY.

CANNED FOODS SALE

A&P

Reg. Price tin 37c—SAVE 11c

PINEAPPLE-GRAPEFRUIT DRINK

3 48-fl-oz tins **1.00**



CASE OF 12 TINS \$4.00 — SAVE 44c

IONA

PEARS

Reg. Price tin 29c—SAVE 8c

3 28-fl-oz tins **79c**

CASE OF 24 TINS \$6.32 — SAVE 84c

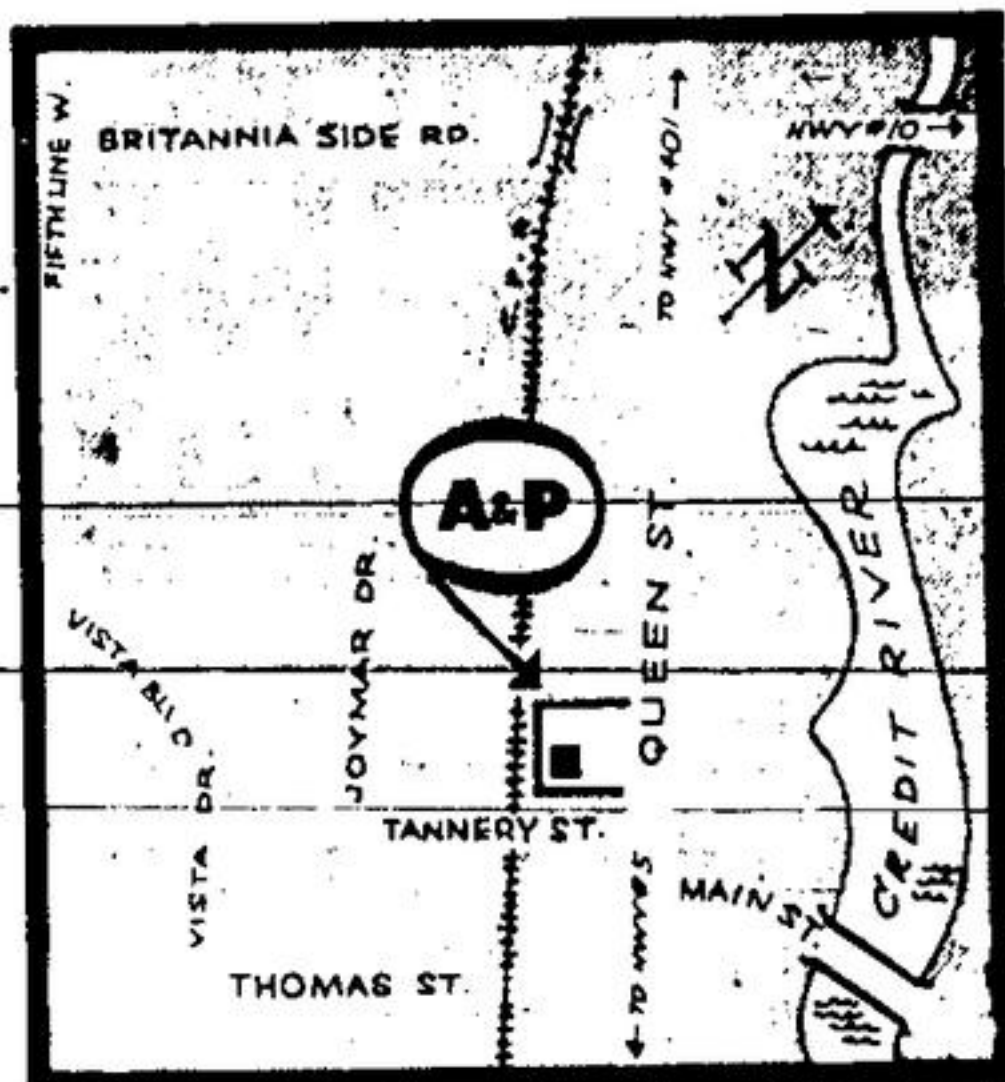
LIBBY'S CHOICE QUALITY, SLICED

BEETS

Reg. Price 2 tins 35c—SAVE 4c

3 20-fl-oz tins **49c**

CASE OF 24 TINS \$3.92 — SAVE 28c



A&P Food Store Located At . . .

126 QUEEN ST. S. STREETSVILLE

OPEN THURSDAY AND FRIDAY NIGHTS UNTIL 9 P.M.
LOTS OF FREE PARKING



JANE PARKER

RHUBARB PIE

large 24-oz pie **49c**

Reg. Price each 59c — SAVE 10c

JANE PARKER PLAIN

RAISIN BREAD

2 16-oz loaves **43c**

Reg. Price loaf 27c — SAVE 11c

A&P Handles Only Meats Purchased From Federally Inspected Packing Houses

"CANADA'S FINEST QUALITY RED BRAND STEER BEEF"

BEEF ROASTS

BLADE
BLADE BONE REMOVED

lb **43c**

SHOULDER
ROUND BONE, IDEAL POT ROAST

lb **39c**

SHORT OR CROSS CUT RIB ROAST

lb **49c**

IMPORTED CHOICE QUALITY

LAMB SALE

LEGS SHORT CUT SHANK

lb **59c**

CENTRE LOIN CHOPS

lb **69c**

ROAST CHOPS STEW CUTS IN A BASKET

lb **29c**

LEAN, MEATY, BRAISING BEEF

SHORT RIBS

FRESHLY GROUND, SHOULDER CUTS

GROUND CHUCK

CHOICE QUALITY, SLICED, SKINLESS

BEEF LIVER

SHOPBY'S **POTATO SALAD**

lb 29c

lb 49c

lb 39c

24-oz plastic ctn. 55c

LIVER & BACON OR BRAUNSCHWEIGER

SCHNEIDER'S CHUBS

5-lb BRAND, SLICED, VAC PAC

COOKED SALAMI

4-oz pkg 25c

8-oz chub 23c

8-oz pkg 25c



THE GREAT ATLANTIC & PACIFIC TEA COMPANY LTD.
FOOD STORES
A&P MEANS DEPENDABILITY