



# LOW, LOW PRICES

A&P HANDLES ONLY MEATS...  
PURCHASED FROM FEDERALLY  
INSPECTED PACKING HOUSES!

Canada's Finest Quality  
**RED BRAND STEER BEEF!**

## BEEF ROAST SALE

**BLADE ROAST**  
BLADE BONE REMOVED

lb **45c**

**SHOULDER**  
ROUND BONE - IDEAL POT ROAST

lb **45c**

**RIB ROAST**  
SHORT OR CROSS CUT

lb **55c**

- SHOPPY, BOIL BAG  
**CORNED BEEF** 2-oz net **25c**  
CHOICE QUALITY, SLICED  
**PORK LIVER** lb **29c**  
SWEET PICKLED  
**BACK BACON** 2 in 2 1/2-lb End Cuts **69c**  
SWEET PICKLED  
**BACK BACON** 2 to 2 1/2-lb Centre Cuts **79c**

**Prime Rib Roast 67c**  
**Boneless Round Steaks and Roasts 83c**  
ALSO RUMP ROASTS

- #SCHNEIDER'S, VAC PAC  
**COOKED HAM** 6-oz pkg **49c**  
CHOICE QUALITY, SLICED, SKINLESS  
**BEEF LIVER** lb **49c**  
ALLGOOD - SMOKED, SLICED, RINDLESS  
**SIDE BACON** 1-lb pkg **57c**  
WHEATLEY BRAND, HEADLESS & DRESSED  
**SMELTS** lb **25c**  
COOKED & BREADED, LAKE  
**PERCH FILLETS** lb **39c**



### FRESH FRUITS AND VEGETABLES FLORIDA, EXCELLENT RED CUTTERS

**WATERMELONS**  
NO. 1 GRADE, GOOD SIZE  
EACH **99c**

FLORIDA, NEW CROP, LONG GREEN SLICERS  
**CUCUMBERS**  
NO. 1 GRADE  
**2 for 19c**

FLORIDA, NEW CROP,  
**CORN**  
YELLOW, TENDER, SWEET  
**6 cobs 49c**  
FANCY GRADE

California, Fresh, Large Original Bunch, No. 1 Grade  
**BROCCOLI** bunch **29c**  
Florida, Green, Sweet, Large, Hard Shell, No. 1 Grade  
**PEPPERS** 3 for **25c**  
California, New Crop, Fresh, Green Tops, No. 1 Grade  
**CARROTS** 2 bunches **23c**

VISIT OUR FLOWER DEPARTMENT  
WE HAVE A FINE VARIETY OF  
CUT FLOWERS AND POTTED PLANTS  
FOR MOTHER'S DAY GIFTS

JANE PARKER LARGE Reg. Price each 59c—SAVE 20c  
**ANGEL FOOD CAKE** each **39c**

Jane Parker Reg. Price each 49c—SAVE 10c  
**RAISIN PIE** large 24-oz pie **39c**  
Jane Parker, Sliced Reg. Price pkg 35c—SAVE 6c  
**FRUIT BUNS** pkg of 6 **29c**

Jane Parker Plain Reg. Price loaf 27c—SAVE 11c  
**RAISIN BREAD** 2 16-oz loaves **43c**  
Jane Parker, Brown 'n Berne, Plain Reg. pkg 27c—SAVE 8c  
**FRENCH ROLLS** pkg of 6 **19c**

**BUY BY THE CASE AND SAVE!**  
3 VARIETIES Reg. Price 2 tins 39c—SAVE 9c

ANN PAGE  
**BEANS** 4 20 FL OZ TINS **69c**  
CASE OF 24 TINS \$4.14 - SAVE 54c

CHOICE  
WHOLE - WHITE  
A&P POTATOES 3 20 FL OZ TINS **49c**  
CASE OF 24 TINS \$3.92 - SAVE 28c

A&P PINEAPPLE-  
GRAPEFRUIT DRINK 3 48 FL OZ TINS **\$1.00**  
CASE OF 12 TINS \$4.00 - SAVE 44c

A&P FANCY QUALITY  
TOMATO JUICE 4 48 FL OZ TINS **99c**  
CASE OF 12 TINS \$2.97 - SAVE 51c

**A&P FOOD STORES**  
A&P MEANS DEPENDABILITY  
ALL PRICES IN THIS AD GUARANTEED THROUGH  
SATURDAY, MAY 11th, 1963.

**Your Dollar  
Buys More at A&P!**

Robin Hood Traditional Reg. Price pkg 45c—SAVE 11c  
**CAKE MIXES** 2 15-oz pkgs **79c**  
(Chocolate Pecan, Caramel Nut, Orange Coconut)

Chas & Sanborn (12c Off Deal) Reg. jar 99c—Save an Extra 4c  
**INSTANT COFFEE** 6-oz jar **95c**

McCormick's, Plain or Salted Reg. Price pkg 38c—SAVE 7c  
**CRACKERS** 2 1-lb pkgs **69c**

Chocolate Caramel or Chocolate Coconut Reg. Price pkg 41c—SAVE 4c  
**WAFERS GRAY DUNN** 8-oz pkg **37c**

Chocolate Syrup Reg. Price jar 49c—SAVE 6c  
**BOSCO** 16-oz jar **43c**

Carnation, Solid White Meat  
**TUNA FISH** 7-oz tin **39c**

Nabisco Reg. Price pkg 38c—SAVE 19c  
**Shredded Wheat** 2 18-oz pkgs **59c**

Detergent Reg. Price box 93c—SAVE 4c  
giant size box **89c**

Tooth Paste Reg. Price tube \$1.09—SAVE 20c  
economy size tube **89c**

Bray Starch  
**GLIDE** 16-oz bomb **59c**

Liquid Wax, Self Polishing Reg. Price tin 89c—SAVE 10c  
**AERO-WAX** quart tin **79c**

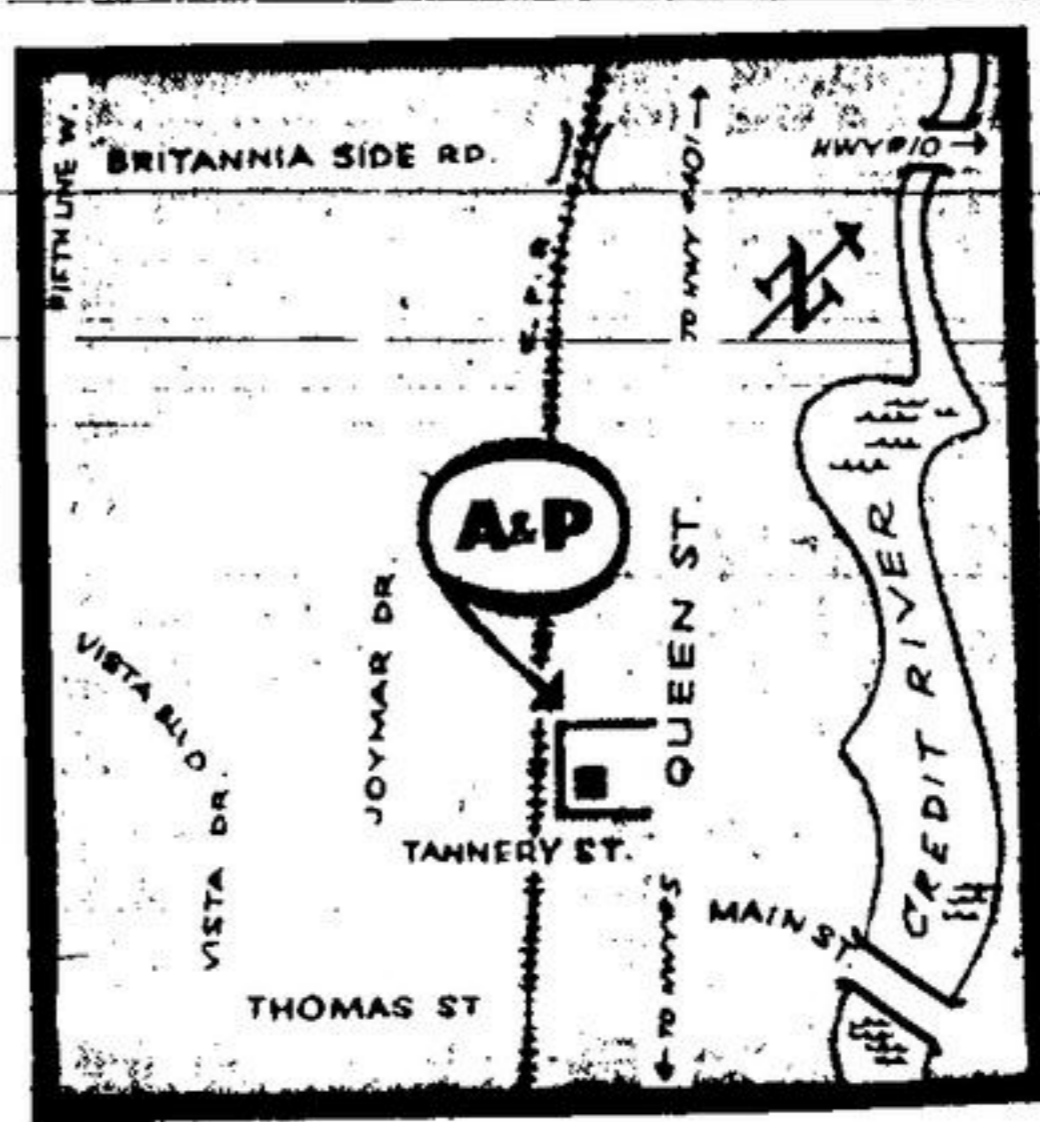
KRAFT MIRACLE WHIP  
**SALAD DRESSING** 32 fl oz jar **65c**  
Reg. Price 89c—SAVE 20c

MARVEL BRAND  
**ICE CREAM** half gallon ctn **69c**

PUREX, WHITE OR COLOURED  
**TOILET TISSUE** pkg of 2 rolls **25c**

SOLO REGULAR  
**MARGARINE** 4 1-lb pkgs **85c**

NESCAFÉ (10c OFF DEAL)  
**INSTANT COFFEE** 6-oz jar **89c**



A&P  
FOOD STORE  
LOCATED AT:  
**126  
QUEEN  
ST. S.  
STREETSVILLE**  
OPEN  
THURSDAY AND  
FRIDAY NIGHTS  
UNTIL 9 P.M.  
LOTS OF FREE  
PARKING