



CHECK-COMPARE SAVE WITH A&P'S LOW, LOW PRICES



BOKAR COFFEE SALE

1-LB BAG
63c
SAVE 4c

3-LB BAG
\$1.83
SAVE 12c

Vigorous & Winery
Custom Ground

FRESH FRUITS and VEGETABLES

TEXAS, CURLY LEAF
SPINACH
Washed and Trimmed — No. 1 Grade
2 10-oz cello bags **29c**

FLORIDA, PASCAL — EXTRA LARGE SIZE
CELERY STALKS
Crisp and Tender — No. 1 Grade
each **19c**

ARIZONA — EXCELLENT FOR EATING
ORANGES
5-lb cello bag **79c** No. 1 Grade

ROSE **MARGARINE**
Reg. Price 2-lbs 49c—SAVE 9c
4 1-lb pkgs **89c**

CHUM (2c OFF DEAL)
DOG FOOD
6 16-oz tins **59c**

YORK **BOLOGNA**
Reg. Price tin 43c—SAVE 7c
2 12-oz tins **79c**

MAPLE LEAF (12c OFF DEAL)
DETERGENT LIQUID
24-oz tin **73c**

DOMESTIC (3c OFF DEAL)
SHORTENING
Reg. Price lb 35c—SAVE AN EXTRA 5c
3 1-lb pkgs **1.00**

Canned Luncheon Meat
KAM LARD
2 12-oz tins **89c**
Reg. Price lb 21c—SAVE 7c
2 1-lb pkgs **35c**

CRISPY CRITTERS **3**
10-oz pkgs **1.00**
ENO FRUIT SALTS **69c**
reg size bit

CHRISTIE CRACKERS **33c**
1-lb pkg

CHEESE SPREAD **51c**
16-oz jar

JUBILEE CHEESE **95c**
2-lb pkg

OMO DETERGENT **1.19**
king size box

A&P HANDLES ONLY MEATS PURCHASED FROM FEDERALLY INSPECTED PACKING HOUSES

PORK LOIN SALE!

RIB PORTION lb **43c**
3 to 3 1/2-lb average

TENDERLOIN PORTION lb **49c**
3 to 3 1/2-lb average

RIB HALF LOIN lb **49c** TENDERLOIN HALF LOIN lb **59c**
CENTRE CUTS or CHOPS lb **67c**

Super-Right, All Meat, Skinless, Pure
PORK SAUSAGE lb **49c**
Choice Shoulder Cuts
GROUND CHUCK lb **59c**
Choice Quality
SLICED PORK LIVER lb **29c**
Choice Quality
PORK KIDNEYS lb **29c**
Maple Leaf, Smoked, Sliced, Rindless
SIDE BACON 1-lb pkg **79c**

ALLGOOD SIDE BACON
SMOKED, SLICED, RINDLESS
2-lb pkg **99c**

Maple Leaf
WIENERS 2-lb pkg **89c**
Red Brand Beef, Well Trimmed
RIB ROAST SHORT or CROSS CUT lb **53c**
Maple Leaf, Sliced, Assorted
COLD CUTS 1-lb pkg **59c**
Maple Leaf, Vac Pac Rings
POLISH SAUSAGE lb **63c**
Weatherly Brand
SCALLOPS 1-lb bag **69c**
Cooked and Breaded
WHITING PORTIONS lb **39c**

CANNED FOODS SALE

Choice Cream Style
A&P CORN 9 10-oz tins **99c**
CASE OF 24 TINS \$2.64 — SAVE 36c

Choice Quality
A&P PEAS 10 10-oz tins **99c**
CASE OF 24 TINS \$2.38 — SAVE 88c

Garden Patch, Choice Whole
KERNEL CORN 8 14-oz tins **99c**
CASE OF 24 TINS \$2.97

Henley Choice Quality
Black CHERRIES 5 15-oz tins **99c**
CASE OF 24 TINS \$4.75 — SAVE \$1.13

Libby's Fancy Quality
SAUERKRAUT 5 28-oz tins **99c**
CASE OF 24 TINS \$4.75 — SAVE 77c

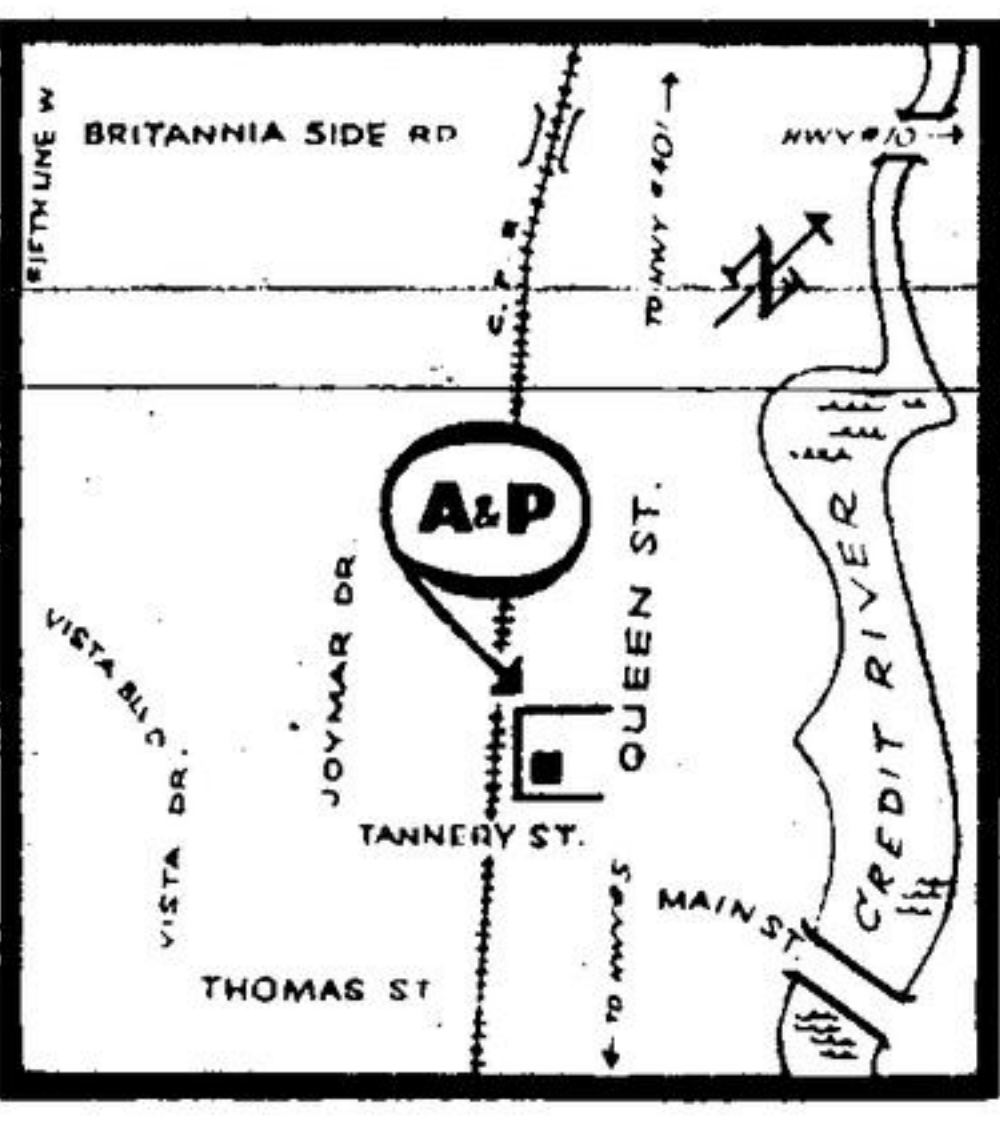
Black's Choice Whole
MUSHROOMS 3 10-oz tins **1.00**
Reg. Price tin 37c—SAVE 11c

Coco Puffs, Trix, Wheaties, Cheerios, Frostys
BIG "G" CEREALS 2 pkg **59c**

Blue Bonnet
MARGARINE 5c OFF 3-lb pkg **77c**

"Canada's Finest Quality Red Brand Steer Beef"
SIRLOIN or WING STEAK lb **79c**
or WING ROAST

Jane Parker
APPLE PIE
large 24-oz pie **39c**



A&P Food Store located at:
126 QUEEN ST. S.
STREETSVILLE
* OPEN THURSDAY AND FRIDAY NIGHTS UNTIL 9 O'CLOCK *
* LOTS OF FREE PARKING *



All Prices In This Ad Guaranteed Through Saturday, March 16th, 1963