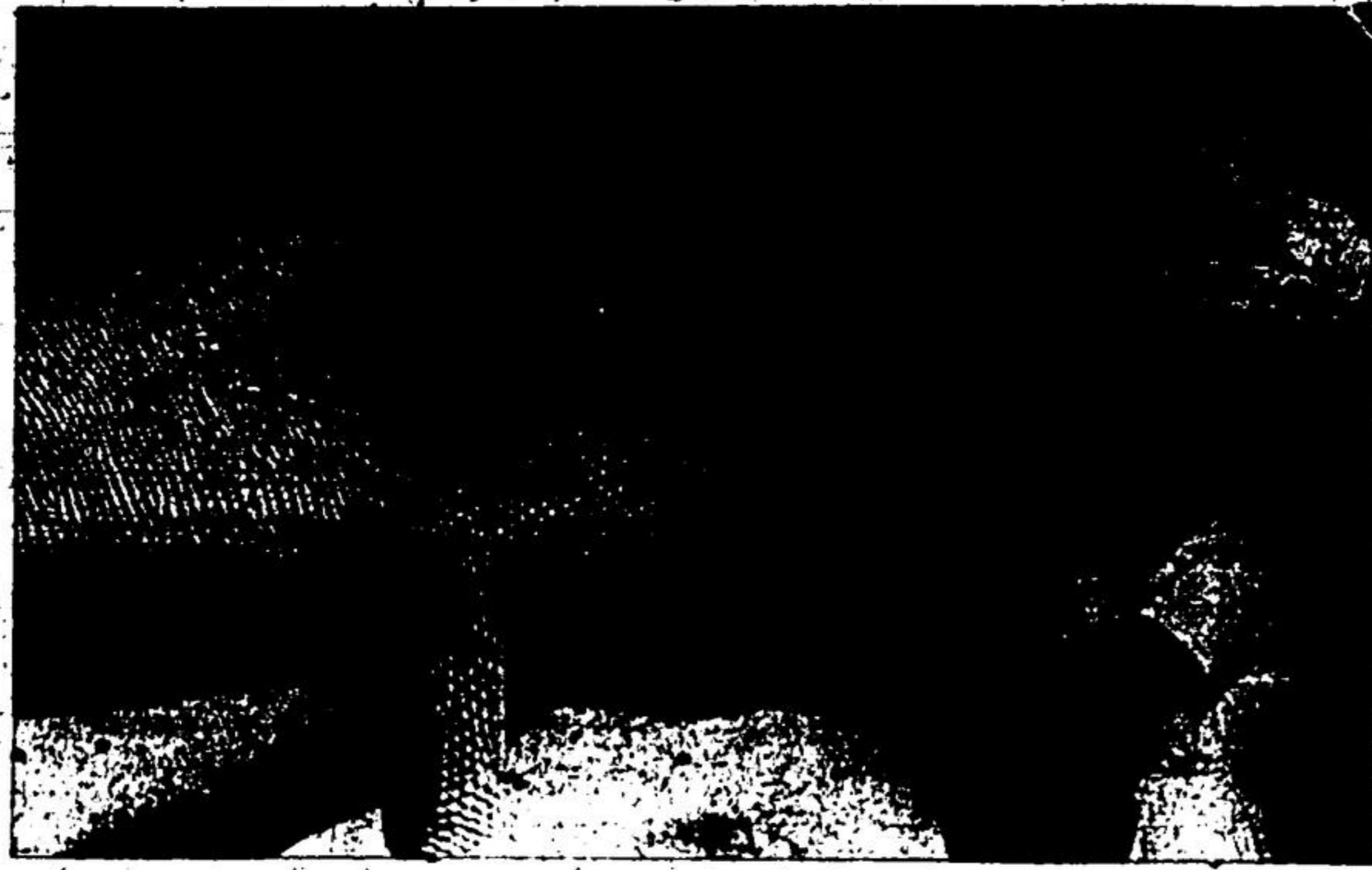


Eric Bates. — Peter Jones Photo

### "Doctor, What Was in that Hypo?"

No, kiddies, this isn't a clip from a science fiction movie. And the ugly one being held by Georgetown's District Memorial Hospital nurse Joanne Bergan isn't the victim of an experimental serum. In fact he isn't the victim of anything except the affection



of the hospital staff. He's Harvey, an Iguana, from the jungles of Brazil, who earns his sustenance being mascot for the Lab technician Eric Bates, and if you haven't already guessed, he really isn't that big. From tail to nose he is just under two feet long,

but he could grow as large as eight feet long. Needless to say it would mean giving up his comfortable life in the hospital lab and the attention

of the hospital staff. A gift to Eric from a friend in South America, Harvey has been a hospital resident since shortly after the opening last June.

Anyone aspiring to a long life may do well to copy, because Harvey will still be scaring people long after most other mascots have come and gone.

## Seek Pinegrove School For Community Hall

### Esquering Council Studies Residents' Proposal

The little red schoolhouse which is fast disappearing from the local scene, may be in the process of making a comeback as community halls. Bearing out this theory was the appearance of fifteen residents from the Pinegrove School district, at Esquering Council Monday night.

They want the old school left as a community hall. "We joined the Esquering School area with a surplus of \$2,740, let's keep the old school and call it square."

**Does the Paying**  
In reply to Reeve Bird's claim that this was the school board's business, Alan Harrop claimed: "It was Council that put us into the Esquering School Area, and it is Council that does the paying."  
Councillor Geo. Currie commented "I believe the school board has always sold our old schools, but I understand that in Trafalgar, and in Chinguacousy, the Councils do the selling. Before proceeding any further, we should find out who has the authority to sell them," Mr. Currie concluded.  
"We in the Terra Cotta area, bought the old school from Chinguacousy Council," added Councillor W. Leslie.  
"Was it your intention to buy the school," queried Reeve Bird. "I thought we had already well paid for it," was the fast rejoinder.

**Turned Back**  
Mr. Spencer Wilson pointed out that two obsolete schools in Trafalgar were turned back to the people in the school section at no cost.  
Right at this opportune or inopportune moment in walk-ed Bob Cunningham, chairman of Esquering School Board. However, he managed to sidestep most of the questions.  
Reeve Bird promised the proper method of disposing of the old schools would be ascertained.

**Breaking Up**  
Three men representing Dufferin Quarries, on the 1st Line, asked council what could be done with the road leading to their quarry. Road superintendent W. Townsend agreed that the road was breaking up. He told of having the Dept. of Highways engineers out to look at it and presented their report.

In the report the Dept. approved subdivisions on culverts, and the road base, but recommended that the ditching, grading and the road top be the responsibility of the quarry.  
"Will you go along with that?" asked Reeve Bird.  
"We haven't much choice," replied Mr. Baker, "if we can't get in or out, we can't work the quarry."  
"We'll do our part if you do yours," the Reeve assured them.

**Flat Refusal**  
Accords after J. Oliver of Main Lakes Development was shown a flat refusal to operate the trailer camp, two other gentlemen asked if they could get permission to operate a trailer camp.  
Mr. J. Knott explained that he wanted to put a mobile home lot on the Brown property, on the lower end of the tenth line. "There's a crying need for our type of subdivision," he explained, "this is a half-million dollar subdivision, with each trailer sitting on a lot 50 by 100, with sewer, water, and gas disposal plant."  
The anticipated question came from councillor George Currie, "How are you going to assess them?"  
"You can assess them ten, fifteen or twenty dollars a month," replied Mr. Knott. "The still can't go to school."

### Born at Alloa 91 Years Ago

One of Georgetown's oldest residents, Mrs. Thomas L. Leslie died on April 9th in Georgetown's District Hospital. She was in her 91st year.

The former Harriet A. Dolson, she was the daughter of Stephen Dolson and Mary Jane McKane and was born near Alloa on the farm now operated by Frank Dolson.

**Town Line**  
After their marriage Mr. and Mrs. Leslie moved to the Town Line near Union, and after retiring 23 years ago moved to Georgetown where they lived at 7 Durham St. Mr. Leslie, who was a former county warden, died in 1954. While living at Union, Mrs. Leslie was active in the Women's Mission Society of Union Presbyterian Church, and was a life member of that organization. She was artistic and painting was one of her hobbies as a young woman. Since moving to town she had been a member of St. John's United Church.

**Five Children**  
She leaves five children, Myrtle of Toronto, Percy, Elizabeth and Wilfrid of Georgetown and Lloyd of Pasadena, California; five grandchildren; and brothers and sisters Mrs. Herb Nicholson, Guelph; Mrs. Ella McClure and Thomas Dolson, Brampton; and Albert Dolson of town.  
Rev. Ian Fleming conducted the funeral service on Thursday at the Harold C. McClure Funeral Home. Pallbearers were Howard Dolson, Ellsworth Annett, Douglas McClure, Oliver Hunter, Frank Dolson and Thomas Hoop. Flowers were carried by Vern Thompson, Harold Dolson, Joe Schertel, Albert Hunter, Herb Dolson and William Anderson.

### THE MAIL BAG

#### Seek Assistance in Summer Camp Fees

55 Stevens Cresc  
Georgetown, Ontario  
April 12th, 1962

The Editor:  
Dear Sir:  
Holiday time will soon be here and we of the North Halton Assoc. for Retarded Children are making arrangements for pupils of the Sunshine School to attend summer camp being done when necessary; also good food in plenty at an inclusive cost of \$60 for a three week period. It is our intention to send as many pupils as we can many communities sharing afford. As everyone is aware, sharing Camp Belwood only the Association is presently en-camp Belwood only two camps have been able to furnish the new pupils have been able to attend from North Halton for a fee of \$75. each for a three week period. Owing to the fact that only two pupils have at Georgetown, on behalf of the past it has not of the Association, make a been too difficult to meet this plea to all service clubs,

cost. This year, for the first time, we are invited to send as many pupils as we wish to Camp Westall, Ayr near Paris, Ontario. This camp boasts a water front for safe bathing and a sandy beach. Excellent supervision is provided with one councillor to every three campers. Activities include swimming, crafts, dramatics, games, and nature study. There is plenty of free time and rest. Chalet type accommodation is available, with all bed linen being done when necessary; also good food in plenty at an inclusive cost of \$60 for a three week period. It is our intention to send as many pupils as we can many communities sharing afford. As everyone is aware, sharing Camp Belwood only the Association is presently en-camp Belwood only two camps have been able to furnish the new pupils have been able to attend from North Halton for a fee of \$75. each for a three week period. Owing to the fact that only two pupils have at Georgetown, on behalf of the past it has not of the Association, make a been too difficult to meet this plea to all service clubs,

THE GEORGETOWN HERALD  
Thursday, April 19th, 1962  
PAGE 12

church groups and individuals to make a donation. If full sponsorship for one child, is not possible, any contribution, no matter how small will be greatly appreciated.  
Contributors will provide not only immeasurable happiness, but a chance to swim; give them a measure of independence; an opportunity to develop good social habits; and provide further opportunities to develop muscular coordination. These children need and will appreciate the opportunity of such a beneficial holiday.  
Will you please help?  
Sincerely,  
(Mrs) P. Hurst,  
Public Relations  
Chairman for N.H.A. for R.C.  
P.S. — Contributions may be sent to the above address.

## Special for Easter ATTRACTIVELY PRICED POTTED PLANTS FOR THE HOME



- LILIES
- HYDRANGEAS
- HYACINTHS
- DARFOOLS
- TULIPS
- CHRYSANTHEMUMS
- OTHERS, ALL OF THE VERY BEST QUALITY

THIS SPRING YOU WILL BE ABLE TO OBTAIN ALL YOUR GARDEN AND LANDSCAPE NEEDS FROM THIS COMPLETELY RELIABLE SOURCE.  
You'll find the service excellent and the selection complete.

## Wynfield Nursery GARDEN CENTRE

160 Guelph St. at the IGA Store 877-4663

### DOCTORS' BILLS PAID

NOW — NO AGE LIMIT

Physicians' and surgeons' coverage at home, office or in hospital for individuals or families, available in Georgetown and area. Past health no longer means you are deprived of this vital protection. For further information and enrolment, fill out coupon and mail to:

(HEALTHGUARD)

E. T. Beck Agency, 129 Hallywood Ave., Willowdale, Ont.

NAME \_\_\_\_\_  
ADDRESS \_\_\_\_\_  
AGE \_\_\_\_\_

# WE NEED 1,000 NEW CHARGE ACCOUNT CUSTOMERS...

and we're willing to pay you a BONUS to join our "CHARG-A-CLUB"

Many Georgetown families have already taken advantage of our Charge Account Plan, but we know there are many others who sleep here, but apparently do not know of our monthly billing arrangements.

To attract new charge account customers, we're offering as a special Bonus, the new "GROOVE MASTER" golf instructor, and it is yours as soon as you've opened a charge account with a total of \$20.00 purchases... good in any of our eight departments. And for those of you who are non-golfers, we have other valuable gifts.

## Cotton Brothers

"INTEGRITY AND SERVICE can never be discounted"

**SPECIAL BONUS TO NEW CHARGE-ACCOUNT CUSTOMERS...**

FORE the Man (or woman) who has everything but a low golf score!

### Groove-Master

"like having a top golfer instruct you on every swing"

The amazing scientific system to lower your golf scores and keep them that way. Golf authorities say it's the finest golf teaching device ever designed. It visualizes and teaches the proper stance, grip, club-head path and swing.



**Weight... HIGH**  
4500 pounds for heavy work

**Cost... LOW**  
with diesel economy in the 35 to 40-hp class

**NEW ED-40** DELIVERED PRICE \$2975

The ED-40 is fully equipped with live hydraulics, live PTO, convenient controls to handle all kinds of farm jobs. It delivers selective weight transfer to handle heavy tillage with minimum wheel slippage. Smooth 4-cylinder diesel power, 8 forward speeds—high and low range shifting. Equipped for 3-point hitch implements, plus swinging drawbar. Be among the first to see and drive the new ED-40.

Finance for profit. Ask us about Allis-Chalmers' time payment plans.

**ALLIS-CHALMERS**  
SALES & SERVICE

**Reid Equipment & Supply Co.**  
STEWARTTOWN TR. 7-3360