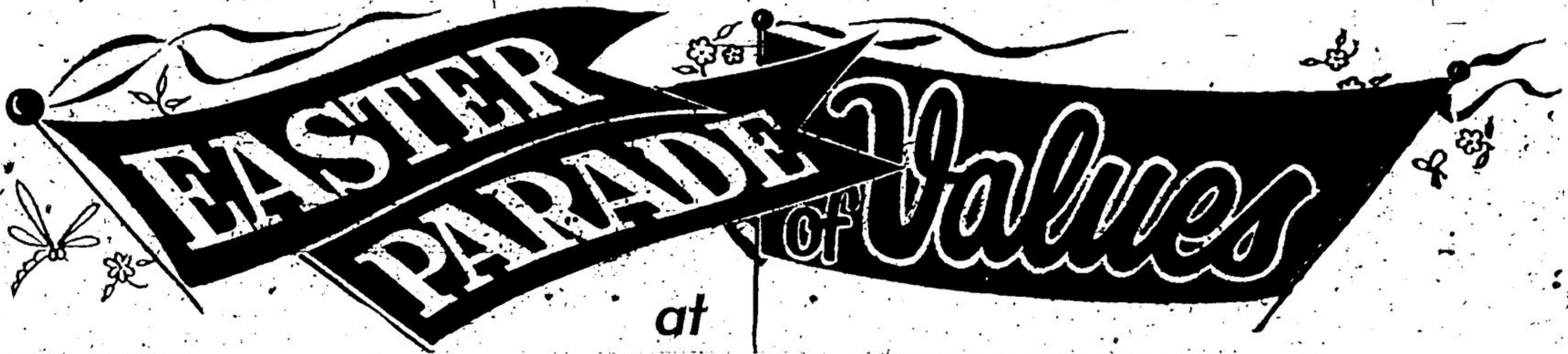


**NEW CARS • USED CARS • DEMONSTRATORS • TRUCKS**



at  
**REED-REDFERN Ltd.**  
HIGHWAY 25 S., MILTON

CALL US COLLECT  
TR. 8-2393

THESE MEN DEAL  
WITH YOU ---



H. G. (Doc) REED, President and founder of the company, he is the man who sets REED-REDFERN'S aggressive sales policy. When he says 'Deal With Confidence', he means it. As proof look to the many satisfied customers in the district who come back to deal again and again.



LES DEFORESY, sales manager, represents 10 years experience in automotive retailing throughout the district.



CHARLIE WILLSON, salesman. A native son of Georgetown, this popular citizen is well known throughout the district in automotive and fishing circles.



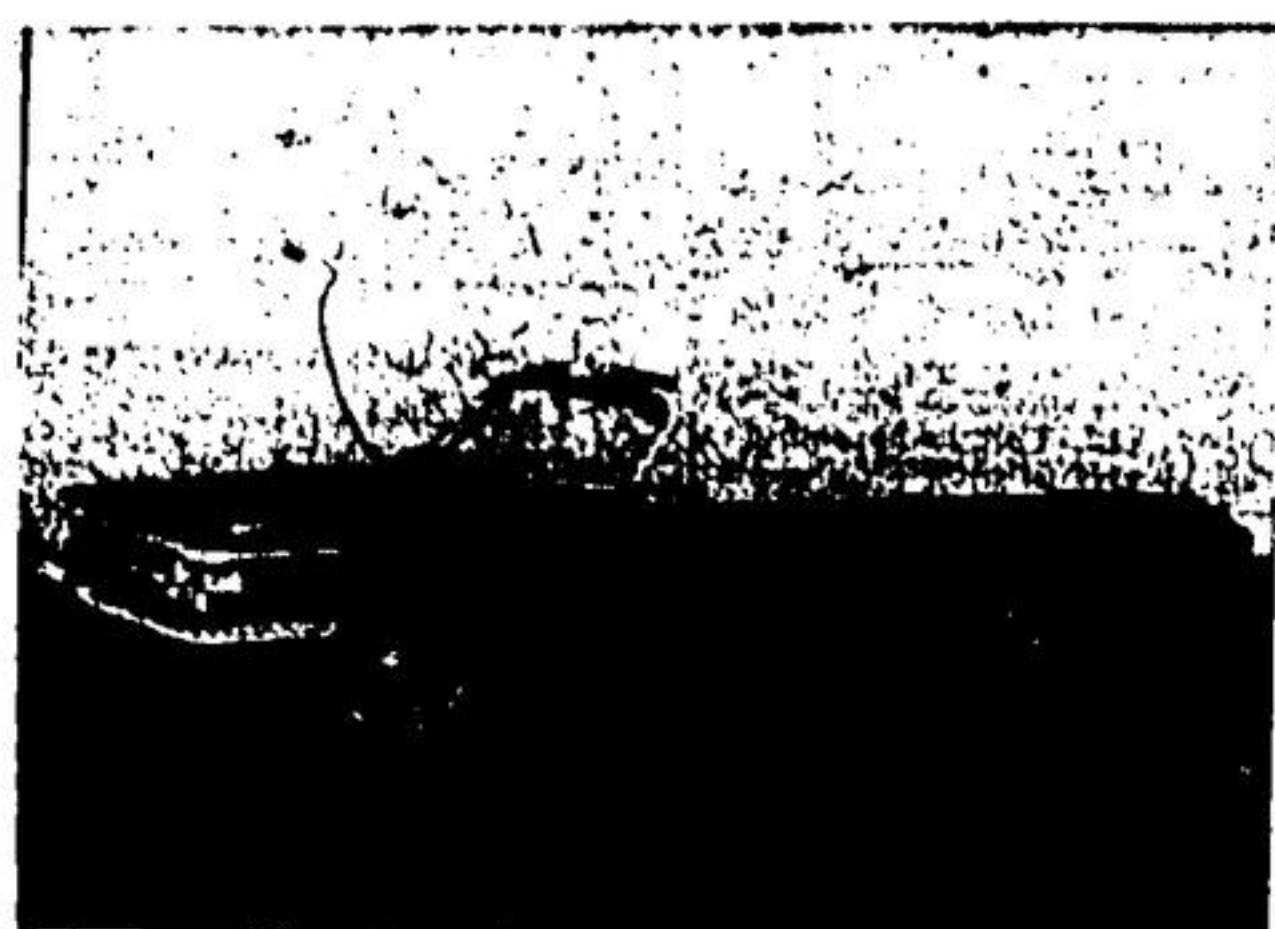
HOWARD SPECK, Howard is well known in the younger circles in the district. He looks forward to meeting you.

If you intend to deal this year  
**SEE US BEFORE YOU BUY**  
**COMPARE OUR PRICE!**  
WE WILL DEFINITELY MATCH OR BETTER ANY CERTIFIED DEAL YOU MAY ENCOUNTER - - - ANY PLACE, - - ANY TIME - - -

ONE OF THESE COULD BE  
**Your Next Car...**

1962	1962	1962
COMETS	METEORS	MERCURYS
<b>\$2489</b>	<b>\$2653</b>	<b>\$3110</b>

**DEMONSTRATOR  
SPECIALS**



**1962 MONTEREY CONVERTIBLE**  
Equipped with dual range automatic trans., p/steering, p/brakes, radio, 300 h.p. motor, padded dash, w/w tires, wheel discs, washers, back up lites and clock.  
List price \$4641. SALE PRICE ... **\$3623**

**1962 MERCURY MONTEREY CUSTOM**  
4 door hardtop, dual range, automatic tran., P/S and P/B, p/windows and p/seats, radio, padded dash, tinted glass, w/w discs, back-up lights. 2 tone. \$4,788 List ..... **\$3669**

**FREE PICK-UP AND  
DELIVERY OF VEHICLES  
FOR SERVICE**

SAFE-BUY RECONDITIONED  
**USED CAR FEATURES**

<b>1962 FALCON CUSTOM SEDAN</b> 101 h.p. motor, automatic transmission, radio, w/w tires, wheel discs, padded dash.	<b>\$2395</b>
<b>1961 CHEVROLET IMPALA</b> 2 door hardtop, automatic transmission, radio, w/w, 2 tone, wheel discs, washers.	<b>\$2795</b>
<b>1960 MERCURY 4-DR. SEDAN</b> Automatic, w/walls, washers, tinted glass, back up lights. Wheel discs	<b>\$1995</b>
<b>1957 PLYMOUTH</b> V8 motor, 2 tone, radio, washers	<b>\$595</b>
<b>1957 FORD 2-DR. SEDAN</b> Radio, whitewall tires, 2 tone, very sharp car	<b>\$895</b>

SEE CLASSIFIED PAGE FOR MORE REED-REDFERN USED CARS

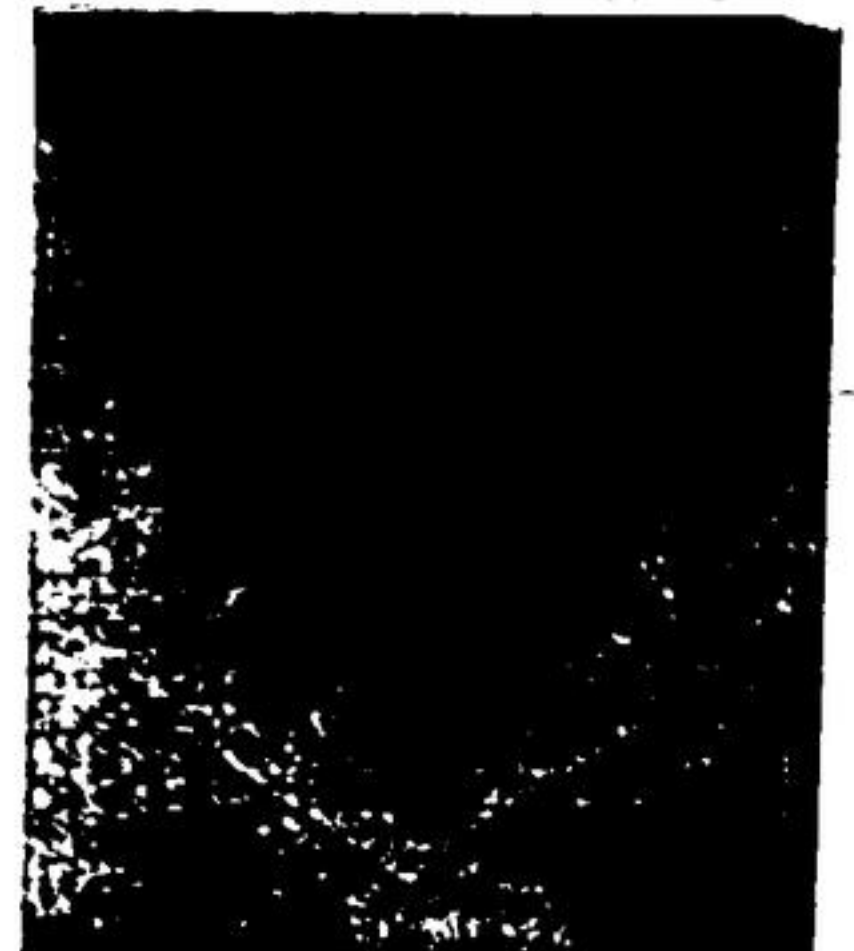
**DEAL WITH CONFIDENCE AT**  
**HALTON COUNTY'S MOST PROGRESSIVE MERCURY DEALER**

**REED-REDFERN LTD.**

HWY. 25 S. MILTON

CALL COLLECT TR. 8-2393

THESE MEN DEAL  
WITH YOUR CAR



EARL REDFERN, service manager and partner in the business, represents over 30 yrs. experience in all phases of automotive shop work. Together with his staff, they total more than eighty years experience. Integrity has always been a by-word in Earl's shops.



CRAIG ROYCE, foreman. A decade of experience specializing in Dyna-Vision Oscilloscope, exhaust gas analysis for top performance.



VIC SWINDEHURST, one of the top tune-up and alignment men in the entire county.



JIM NEDDIE, 5 year apprentice, Jim's enthusiasm and conscientious manner is a credit to the shop.



FRANK COULSON, is widely experienced in truck maintenance to all makes.

