

**CRUEL THAN THE WORST  
"DOUBTS ARE MORE  
OF TRUTHS"**

— author's name below —

Physicians have long known that mental attitude often affects sickness. When people are sick, "treatment" can be more effective if the patient has complete confidence in the ableness of the physician to accomplish a cure.

Never have any doubts about the ability of a physician to help you. Gone are the days when little was known about the causes of sickness. Medicines now can be depended upon to accomplish a desired result. When you walk into a physician's office leave all doubts outside, for your trouble will soon be gone.

**YOUR PHYSICIAN CAN  
PHONE  
TRIANGLE 7-3692  
WHEN YOU NEED  
A MEDICINE**

Pick up your prescription if shopping near us, or let us deliver promptly without extra charge. A great many people entrust us with their prescriptions. May we compound yours?

**MacCormack's  
Drugs  
PRESCRIPTIONS  
CHEMISTS**

9 Main St. N. — TR. 7-3692

• Quotation by Jean Moliere (1622-1673)

Copyright 1958 (11W1)

**YOU DESERVE  
THE BEST**

In Automatic Heating Installation

**ONE CONTRACT COVERS:**

- First line heating equipment
- Finest in installation
- Full Warranty Service
- All necessary repairs to floors, walls, trim, plaster

For the very best in heating installations, call TR. 7-4202.

General Electric, Hallmac, Iron Firemen, Warm Air, Hot Water or Steam Heat

**BERG'S  
Electro - Lab.**

**Do It Yourself!**

Test Your TV and Radio Tubes FREE in a Testomatic Tester

New Tubes Available

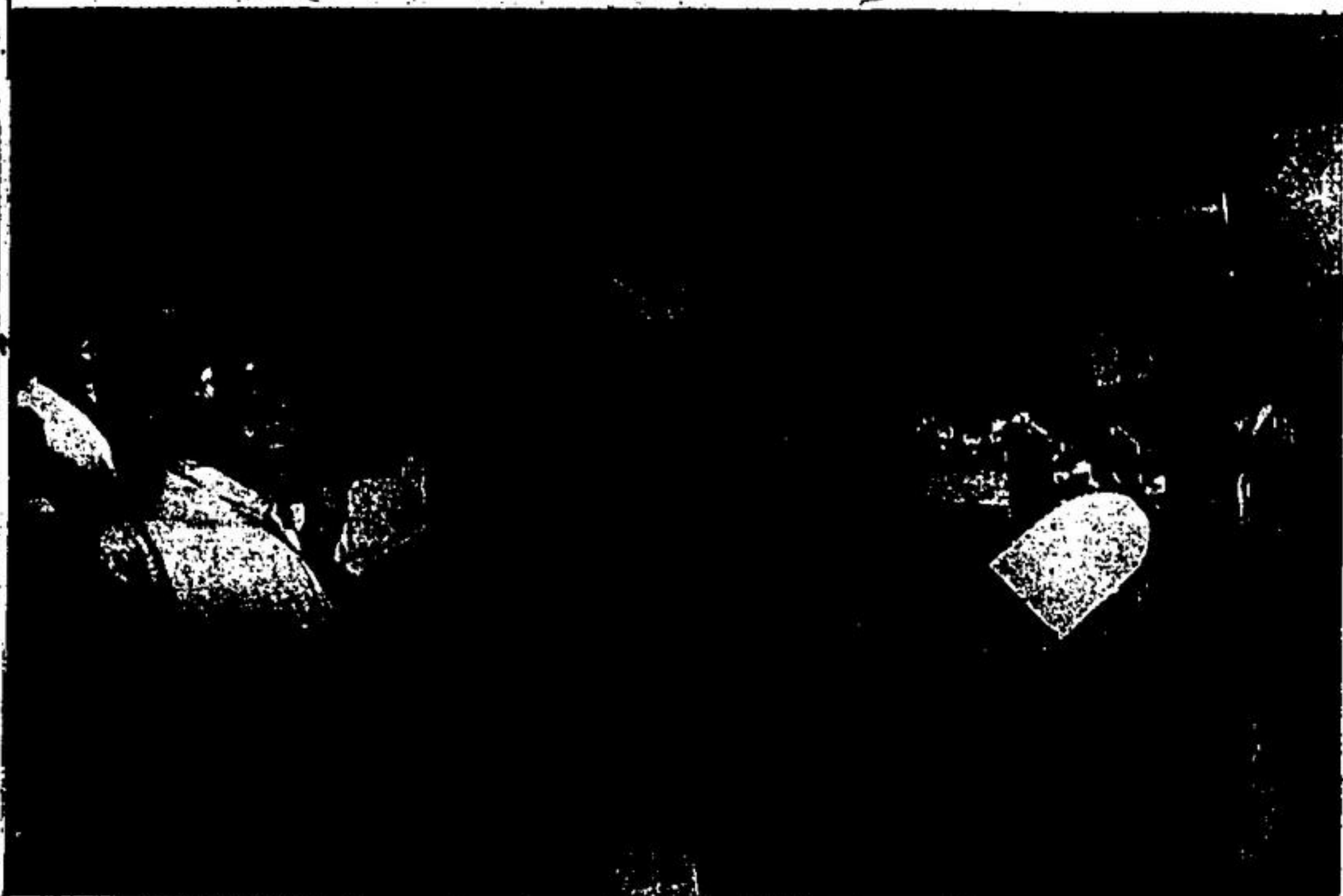
at  
**HUTCH'S  
SMOKE & BARBER SHOP**  
10 Main St. South  
Open daily to 11 p.m. 6-25



Portrait of a POOR MAN  
He has just paid for another load of fuel for his old-fashioned, wasteful furnace and he is feeling broke. What to do? With a new, scientifically designed, economical SMART'S Furnace he could save money by saving fuel, pay for his new furnace and enjoy himself. Be wise—see your SMART'S dealer now and get full particulars.



**R. H. THOMPSON  
HARDWARE  
OR & GAS HEATING  
HARDWARE & PLUMBING**  
Phone TR. 7-2971



A TOUR OF THE KITCHENER television studio was combined with appearance on the Bandstand show when two busloads of young Georgetowners visited there recently. Photographer Bill Hardman was along on the trip, and this was one of the pictures he snapped during the day.

**"OBSERVATIONS"**  
by Albert Kershaw

When you figure it out we humans are pretty cowardly at heart, aren't we!

During the summer we had been on a pleasure trip and when we were returning home on one of the principal highways, the driver of a car ahead started to weave across the white line, then went into the ditch, out of the ditch, rode the soft shoulder, then back on the highway, then zigzag all over from side to side, had two near collisions with a gravel truck and a bus. Saw him take his eyes off the road, saw him take his hands off the steering wheel. We kept at a safe distance behind for it was too risky to pass. Then he finally left the road and came to a shuddering stop when he hit a pole.

Suddenly the two front doors opened and out came the driver in one heck of a hurry. Thinking he needed help we pulled off and offered assistance. When he regained his speech, we asked him what was the matter, and he replied "There was a bee in the car and I made sure he wasn't going to sting me."

I said to him "Why didn't you pull off the highway and shoo him out, instead of endangering your own life and the drivers of the truck and bus and his passengers and traffic behind you?"

He said "I guess I didn't think about doing that."  
A little bee, less than an inch in length, and whose weight would be measured in drams, could scare the daylight out of a man whose height and weight are manyfold greater. At our place of employment, or in our homes, or garden, when we see any insects we don't like it doesn't take us long to send them to their heaven (if they have one.)

**CANADIAN LEGION . . .**

(continued from Page 1)

munity at the Cenotaph on Sunday

Once again it has been suggested, this time at council level, of shifting the cenotaph, from its present somewhat (at least in our mind) unfortunate position. This is something that has been long overdue, and would be a wonderful move for the council and branch 120 to cooperate on. It has been suggested that it be moved to various other places, all of them with some merit. However, we again feel quite strongly that in view of the advancing years of those taking part (and we are not attempting to be facetious about that) the Cenotaph should remain in the central downtown section, and in close proximity to the churches where service can be held in case of inclement weather. The logical place, we should think, is on the side lawn of the Public Library. Certainly, there is enough ground available, its near proximity to the Presbyterian Church and the library itself make it a logical place, inasmuch as it would never have to be moved for any reason. The fact that it is in downtown Georgetown should be a big factor in more people taking part in the parade, and something could be worked out to give a new parade route. However, the important factor, that of rerouting traffic would be a simple thing to arrange and would not inconvenience anyone, as there are many alternative roads in that district. And as mentioned before, the time is rapidly approaching when age is becoming a factor in the attendance at parades, and that hill to the present site is not exactly an easy one.

The obvious retort to this is that with the town expanding eastward it might be advantageous to have it in the geographical centre of the town. However, the downtown section is, and we expect will remain, the centre of Georgetown, regardless of expansion, and would be the logical place for the cenotaph. . . . Any comments, suggestions or criticisms? . . . We'd love to have them.

Flies or other bugs that land in close proximity are swiftly dealt with. Insects in our gardens are put to an untimely end. Hunters stalk big game armed to the teeth. Yet when a bee flies in the car you see what happens — chaos and confusion! Bravery has many forms, this kind is not one of them, which reminds me of a little poem I heard many years ago.  
"He that fights and runs away,  
Lives to fight another day,  
But he that stands and stays his ground,  
Gets his . . . head knocked 'round."

**NEW FORMULA  
ESSO FURNACE OIL**

• GIVES YOU MORE HEAT • LESS FURNACE TROUBLES  
• ON BUDGET TERMS

New Formula Esso Furnace Oil burns super clean, greatly reduces deposits on furnace parts, means greater economy for you. You get uniform higher quality in every gallon.

Phone us today about Imperial's convenient Budget Terms on New Formula Esso Furnace Oil.

**M. W. SOMERVILLE — ZE. 6-7200**

(NO TOLL CHARGE)



The new Impala 4-Door Sport Sedan . . . like all new Chevies . . . rolls on tougher Tyrex cord tires.

**CHEVROLET  
SAYS NEW  
LIKE NOBODY  
ELSE!**

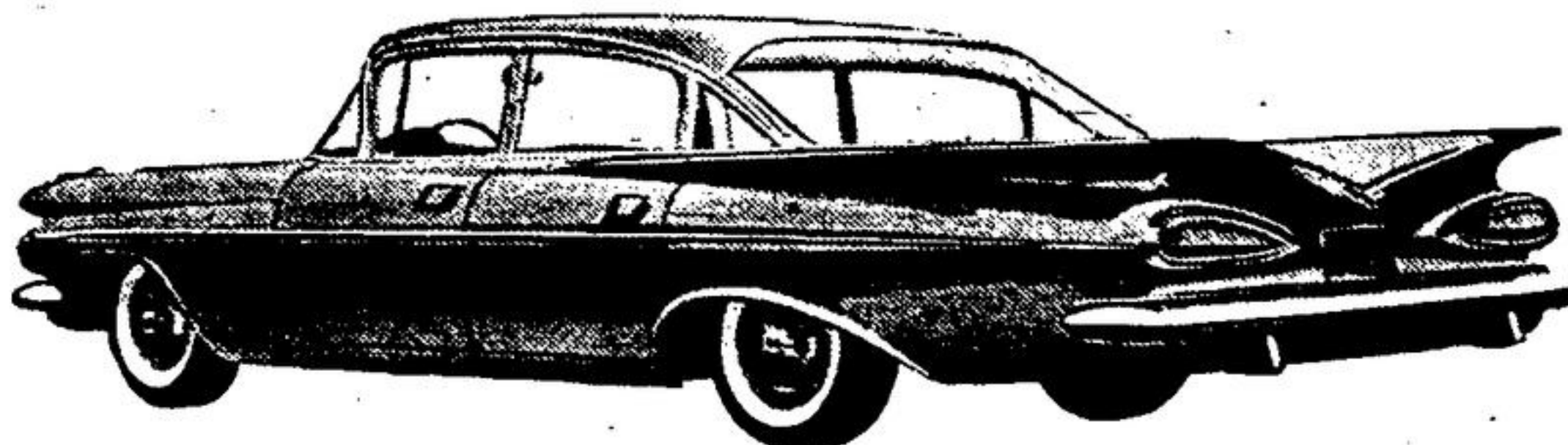
Let your eyes linger over Chevrolet's fresh, finely shaped contours. Relax in the roominess of its elegant new interior, get the exhilarating feel of its hushed, silken ride. The more familiar you become with this '59 Chevrolet, the more ways it says new!

Here's the car that's definitely new in a decidedly different way. The '59 Chevy is shaped to the modern Canadian taste — crisp, clean and beautifully efficient looking, with new poise, new proportions.

Chevrolet's new Slimline design not only brings you new grace, but also new space . . . a new and roomier Body by Fisher. And Chevy's vast new areas of visibility, give you clear seeing from every seat.

The more you look, the more you see that's new. Like the new Magic-Mirror finish which, with normal washing alone, will retain its original lustre for up to three years. And you'll find important engineering developments—eight V8's plus a new Hi-Thrift 6 that delivers up to 10% more gas economy with more usable horsepower at normal driving speeds; bigger, safer stopping brakes; a smoother, steadier ride.

No other car says new like this. And you get all those Chevrolet virtues of economy and dependability. See the '59 Chevrolet today.



The beautiful Bel Air 4-Door Sedan with vast new areas of visibility.



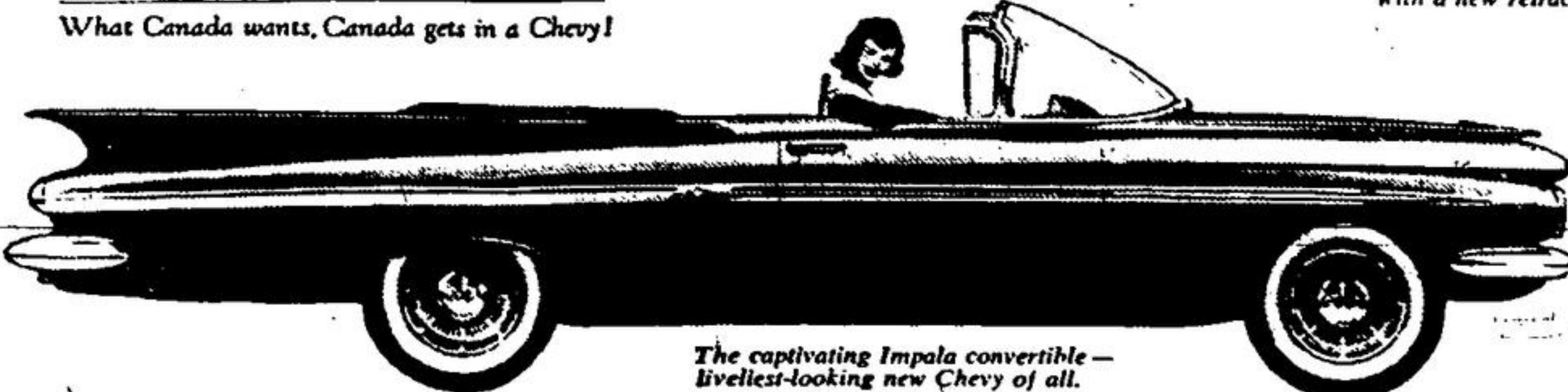
The budget priced 4-Door Biscayne like all new Chevies, has big new Safety-Master brakes.



The luxurious 9-passenger Kingswood Station Wagon with a new retractable rear window.



What Canada wants, Canada gets in a Chevy!



The captivating Impala convertible — liveliest-looking new Chevy of all.

A GENERAL MOTORS VALUE

All new — all over again! **'59 CHEVROLET!**

C-1159D

**Arthur Scott Motors Limited**  
61 GUELPH STREET GEORGETOWN TRIANGLE 7-2251