

**WE SERVICE
TELEVISION... all makes**
RADIO RECORD PLAYERS
CAR RADIOS
APPLIANCES... Irons, toasters, etc.
ERNIE'S RADIO
24 YEARS' SERVICING
MILL STREET TRIANGLE 7-2701

**BABY SHOWER FOR
MRS. DONALD BURNS**

Mrs. Bill James and Miss Norma Olney were hostesses at the latter's home one evening last week at a baby shower.
Guest of honour was Mrs. Donald Burns, whose daughter Donna Lynn is one of Georgetown's newest residents. Mrs. Burns received several lovely gifts for the baby from the twelve friends who attended the shower.

WHAT COUNCIL DID

**Leave Trees, Curve Walk
On Northern Main Street**

Five large trees on Main Street North originally slated to be removed for a new sidewalk, will be spared and the sidewalk curved toward the "White Bridge" to allow them to remain.

Council decided this at Monday's meeting, dealing with a petition by residents received last week.

The town engineer said that it would be possible to have one foot boulevard between sidewalk and highway and that a guard rail could be put up if it is thought dangerous.

Reeve Allen and Cr. Gray voted against the change in plan. Mr. Gray believes that a permanent highway installation should have a straight sidewalk, while the reeve is concerned about the safety factor for children.

Crs. Sykes and McGilvray were outspoken for leaving the trees. "A curved sidewalk has been there for fifty years," said Mr. McGilvray, "and I'm not in favour of removing trees when we can go around them."

A request from the Corner Cupboard Restaurant for reserved parking space on both sides of Main Street as bus stops was turned down.

Council felt that the space is more important for parking cars, and that buses are only stopped for a few minutes and do not interfere with traffic too much. Bus drivers will be asked, however, when two buses from opposite directions arrive at the same time to park far enough apart so traffic is not completely blocked.

Halton Co-Op Supplies asked for permission to put a culvert under a road which leads from the highway beside their property.

It is a tricky problem, said Reeve Allen, because there is a natural drainage course, and the town can take no responsibility if such a culvert flooded other property. The solution would be for a drain from John Street through to the creek, he said, but the town could not consider this at the prices the old Central Park land had been sold to present owners.
The engineer was asked to make a report on the situation.

**Stopsigns at the Albert - McNab
corner will be reversed to make
Albert the stop street.**

**Georgetown Second in
Tri-Town Field Meet**

Combining athletic prowess on Friday, pupils of the two local public schools competed in a tri-town field meet in Milton.

Georgetown placed second to Acton in the field day, with the host town coming third in the standing. Local competitors, who had been chosen in a Georgetown field day the previous week were:

From Wrigglesworth School, Michael Brown, Errol Stapleton, Max Harris, Poul Popiel, Bob Henderson, Ronald Ganton, David Sprague, Bert McMann, Pat Pruneau, Karen Norton, Jenny Tenhagen, Brenda Dawson, Marie Sorenson Louise Stapleton, Frances Ernewein.

From Chapel Street School, Peter Townend, Darwin Tost, Lynne Hyde, John Cummins, John McGill, Gloria McQuarrie, Klaartje Vandervoort Pat Sykes, Betty Bonfield, Betty McMillan, Sherron Bradbury, Sheila O'Neil, Wanda Fawcett, Betty Carey, Sharron Sweezie, Beverley Morrow, Pamela Currie.

Sr. Boys, 75 yd., Bob Marshall, Acton; Errol Stapleton, Georgetown Wrigglesworth; Max Harris, Georgetown Wrigglesworth.

Sr. Boys, 100 yd., Max Harris, Georgetown Wrigglesworth; Bob Marshall, Acton; Errol Stapleton, Georgetown Wrigglesworth.

Sr. Boys High Jump — Ed McMullen, Acton; Peter Sherratt, Milton; Gordon Hasselfeldt, Milton.

Sr. Boys' Stand. Broad — Peter Sherratt, Milton; Bruce Timpson, Acton; Michael Brown, Georgetown Wrigglesworth.

Sr. Boys Runn. Broad, Errol Stapleton, Georgetown Wrigglesworth; Peter Sherratt, Milton; Bob Marshall, Acton.

Sr. Boys' Baseball Throw — Herman Kuhn, Acton; Peter Townend, Georgetown Chapel; Ron Ganton, Georgetown Wrigglesworth.

Sr. Boys' Relay — Acton, Milton, Georgetown.

Int. Boys 75 yard — Don Currie, Milton; Don Price, Acton; Peter Townend, Georgetown Chapel.

Int. Boys, 100 yd. — Jim Elliston, Milton; Don Currie, Milton; Don Price, Acton.

Int. Boys High Jump, Jim Elliston, Milton; Moynes, Milton; Darwin Tost, Georgetown Chapel.

Int. Boys Runn. Broad — Poul Popiel, Georgetown Wrigglesworth; Raymond Pasma, Acton; Don Price, Acton.

Int. Boys' Baseball Throw — Peter Townend, Georgetown Wrigglesworth; Peter Lawson, Acton; Lynne Hyde, Georgetown Wrigglesworth.

Int. Boys' Relay — Milton, Georgetown, Acton.

Sr. Girls' 50 yd., Gertrude East, Acton; Louise Stapleton, Georgetown Wrigglesworth.

Sr. Girls' 75 yd. — Gertrude East, Acton; Ann Daintith, Acton; Kathy Finn, Milton.

Sr. Girls high jump — Ann Daintith, Acton; Pat Pruneau, Georgetown Wrigglesworth; Linda Crucefix, Milton.

Sr. Girls' Standing broad — Donna Lazenby, Acton; Betty Bonfield, Georgetown Chapel; Gertrude East, Acton.

Sr. Girls Runn. Broad — Ann Daintith, Acton; Pat Pruneau, Georgetown Wrigglesworth; Betty Bonfield, Georgetown Chapel.

Sr. Girls' baseball throw — Bev May, Milton; Jackie Childs, Milton; Gloria McQuarrie, Georgetown Chapel.

Sr. Girls Relay — Acton, Milton, Georgetown.

Int. Girls, 50 yd., Carol Bradley, Acton; Ruth Ann Sherratt, Milton; Klaartje, Vandervoort, Georgetown Chapel.

Int. Girls 75 yd. — Ruth Ann Sherratt, Milton; Joy Gray, Milton; Carol Bradley, Acton.

Int. Girls High Jump — Diane Dedels, Acton; Sharon Force, Acton; Joyce Robertson, Milton.

Int. Girls Stand. Broad — Diane Dedels, Acton; Joyce Robertson, Milton; Karen Norton, Georgetown Wrigglesworth.

Int. Girls' Baseball Throw — Karen Norton, Georgetown Wrigglesworth; Pat Sykes, Georgetown Chapel; Sharon Houston, Milton.

Int. Girls Relay — Acton, Milton, Georgetown.

Service that can't be beat when you call TR. 7-2596-Booth Taxi.

MONUMENTS
Brampton Monument Works
Designs submitted, cemetery lettering, corner posts and markers
A Good Display in Stock
W.M. C. ALLAN, Prop.
68 Queen St. West Brampton Shop 1410J, Phones: Res. 313
Rep. TOM NICOL
Phone Brampton 803W

Closer & Closer...

**ONLY A FEW THOUSAND DOLLARS
STILL TO GO**

and

**GEORGETOWN
will be able to open the new
COMMUNITY SWIMMING POOL**

DON'T PUT IT OFF . . .

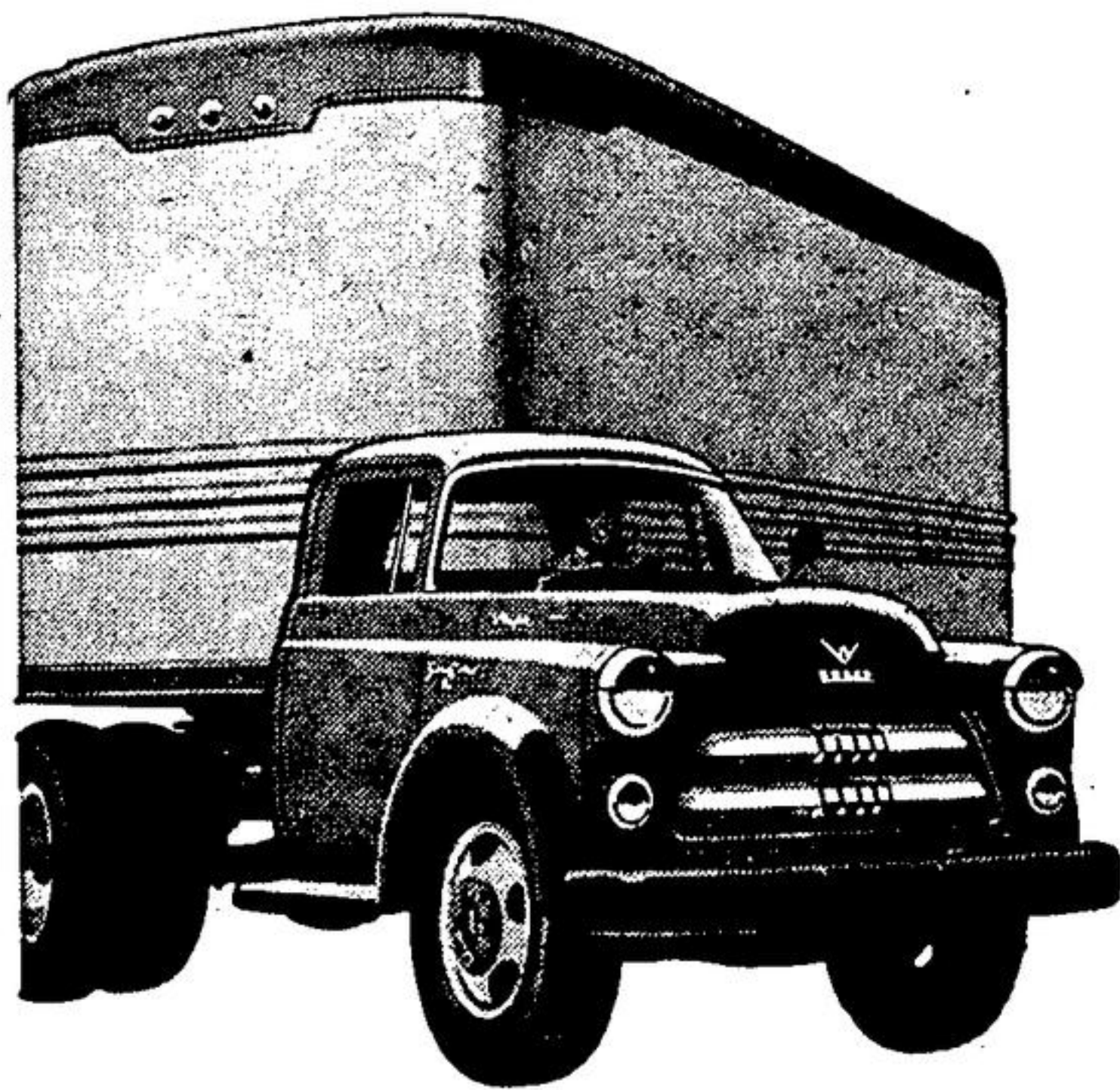
GIVE TODAY

Summer's here and the kiddies are waiting for their first swim.



Space contributed in the service of the community
by John Labatt Limited.

Most profitable way to haul today!



**DODGE
"Job-Rated"
TRUCKS**

**A TRUCK TO FIT
EVERY HAULING NEED**

Long hauls—Feature for feature, you can't beat a Dodge K8 model for over-the-road performance and economy! For example, you get the most powerful V-8 in its weight class, as standard equipment . . . with 201 horsepower to hurry your biggest loads along. Advanced-design hemispherical combustion chambers squeeze full power from regular gas.

Short Hauls—Team up with a husky Dodge express . . . and you team up with the workingest hauling partner that money can buy! Under the hood, there's the new stepped-up 125-h.p. Dodge truck Six. And Dodge now offers you a choice of three express bodies—78" x 49", 90" x 54", and 108" x 54" . . . to provide plenty of load space. What's more, Dodge expresses have flat-flared sides and raised skid strips for easier loading and unloading.

All Hauls—Whatever your needs from 1/2-ton to 65,000 lbs. G.C.W. . . . Dodge has a truck that's right for your job, right for your budget! Take your pick from expresses, panels, chassis and cab, and chassis with flat-face cowl models to accommodate a wide range of special bodies.

Chrysler Corporation of Canada, Limited



Check these DODGE MORE-FOR-YOUR-MONEY Features!

- New push-button hauling! With new push-button PowerFlite transmission, you just touch a button . . . and go! Available on all 1/2-ton models.
- New higher payloads! Increased gross vehicle weights on Dodge medium- and high-tonnage models mean more payload capacity . . . and more profit for you on every trip.
- New 12-volt electrical system! Affords ample current for all electrical needs, assures superior starting and ignition performance. New generator provides maximum output even at low engine speed for improved battery charging under all driving conditions.

SEE YOUR DODGE-DE SOTO DEALER NOW FOR A DOLLAR-SAVING DEAL!

HEWSON MOTORS LIMITED

6 MILL ST. GEORGETOWN TRIANGLE 7-2422

Watch Cities—Shower of Stars weekly on TV. Check your newspaper for date and time.

**ORANGEVILLE
HARNESS
RACES**

DOMINION DAY

July 2nd

10 RACES - \$2100 PURSES

1.30 P.M.

MacMurdo's

A COMPLETE LINE OF ITEMS FOR

BABIES - TOTS . . .

. . . JUNIORS AND LADIES

KIRK - KRAFT WEAVING

COURTS GIFT CARDS, WRAPPING AND HASTI NOTES

164 GUELPH STREET

PHONE TR. 7-2125



for your home
Comfort & Health

**KOOL LITE
ALUMINUM
AWNINGS**

FOR YOUR PATIO! FOR WINDOWS! FOR DOORS!

- CUSTOM MADE • DO NOT DARKEN YOUR ROOMS
- CHOICE OF COLORS
- LIFETIME INSTALLATIONS

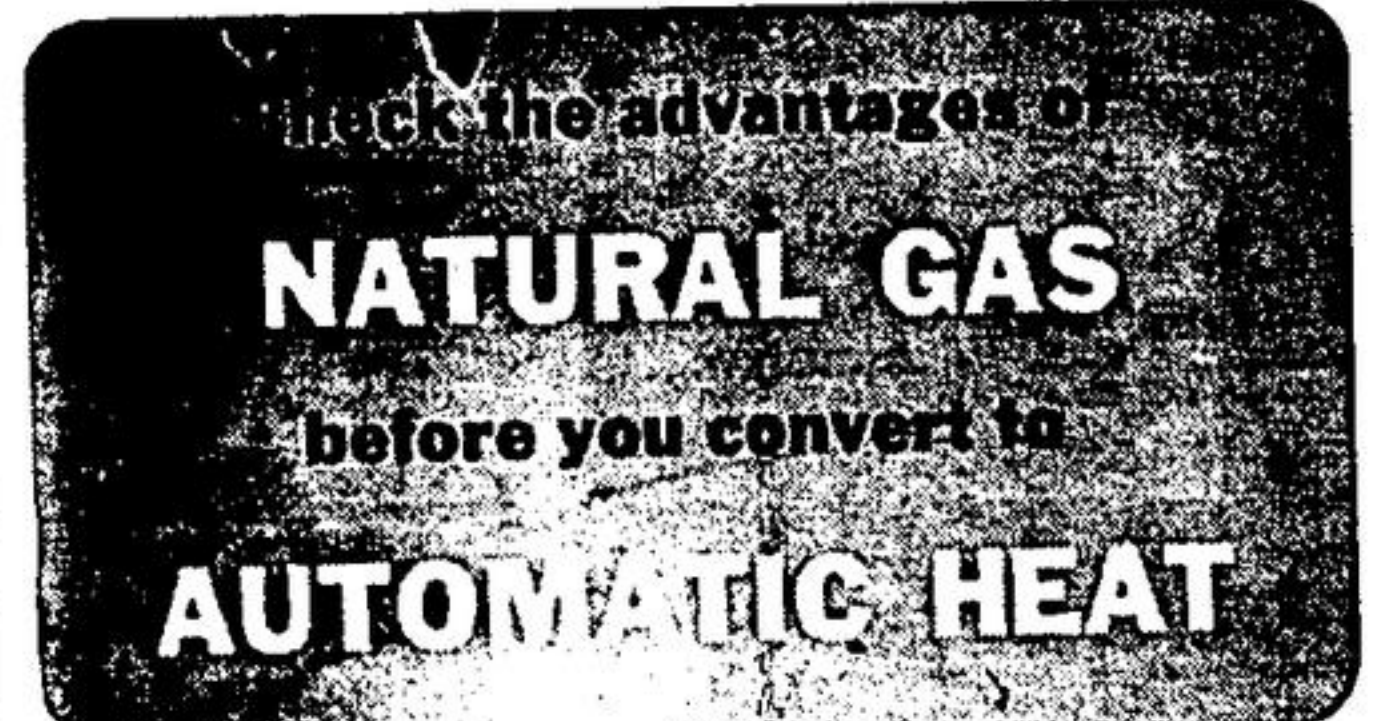
— FREE ESTIMATES —

STAN CHAMBERS

PHONE 77 R 46 Collect

ERIN, ONT.

BOX 72



Check the advantages of

NATURAL GAS

before you convert to

AUTOMATIC HEAT

UNITED SUBURBAN GAS CO. LTD.

20 Main W.

or your dealer

TRIANGLE 7-3921

Fuel Oil

CALL

'MURT ALLISON'

**TR. 7-3291
2203**

AGENT FOR

Elias Rogers

CO. LTD.