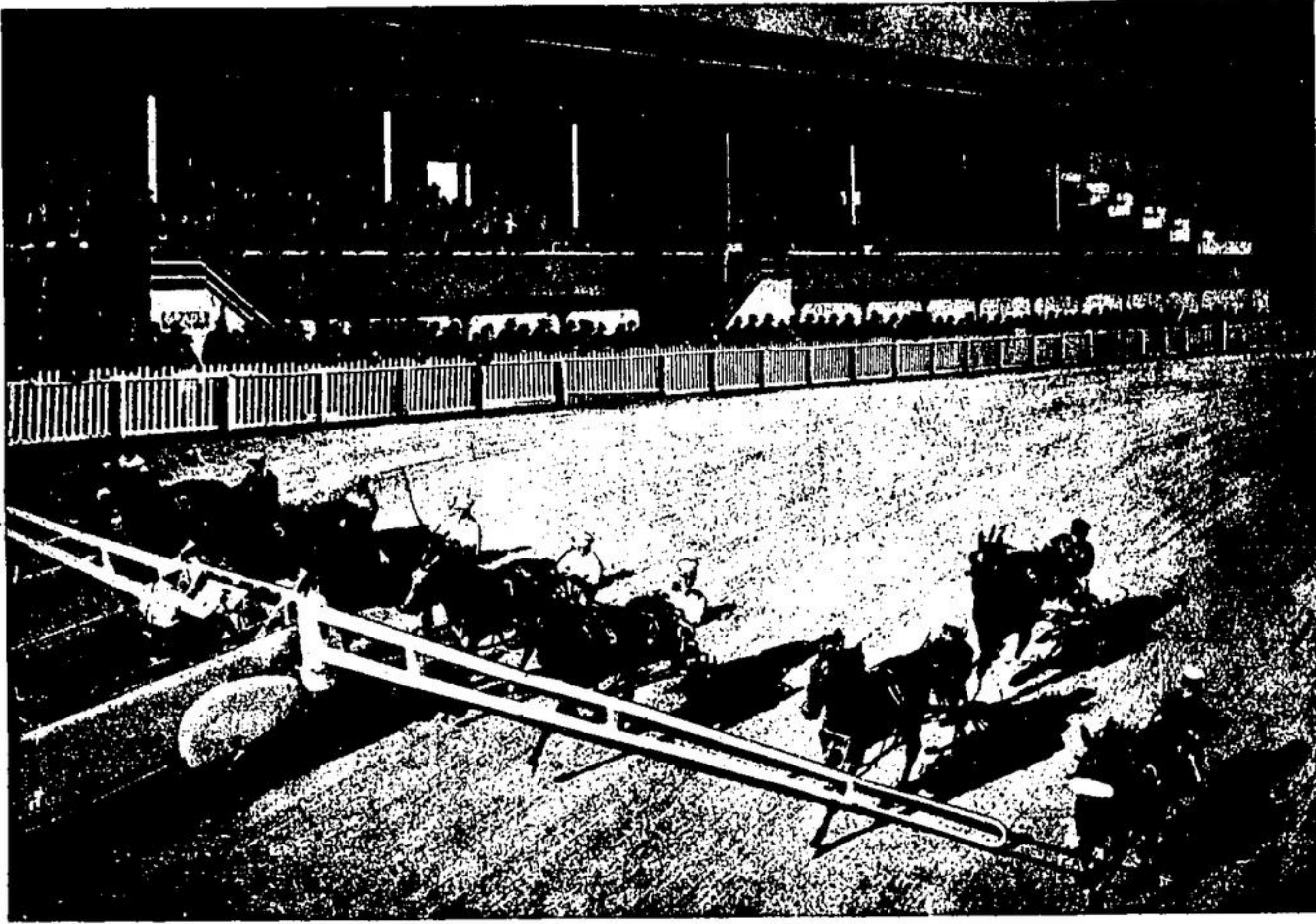


## HARNESS RACING AT GEORGETOWN, SATURDAY, JUNE 2nd



They're off and running at 1.30 p.m. on SATURDAY, JUNE 2nd at Georgetown Park . . . Fastest growing sport in Canada . . . Ten Events . . . Betting privileges . . . Refreshments booths . . . Adults \$1.00, children under 12 free . . . Sponsored by Georgetown Rotary Club

## FOREST PROJECT URGED IN CREDIT RIVER VALLEY

Recommendations for pollution control, intelligent land use, recreational areas and an authority forest were in a report to the Credit Valley Conservation Authority.

A. H. Richardson, conservation engineer of the Ontario Department of Planning and Development, presented the report for Planning Minister Nickle, who is ill, at a dinner in Brampton last Wednesday.

The report urged that the Department of Health be asked by the Authority to introduce a permit system for every new sewage outlet, except agricultural tile drains, which leads into a water-course.

In addition, a time limit within which all municipalities, industries, gravel operators and home owners now polluting streams must adequately treat their wastes, was urged on the Department of Health. Urgently needed, the report said, are new facilities at Streetsville, where a sewage treatment plant designed for 250 houses now serves more than 1,000. A new sludge treatment plant is slated for immediate construction there.

A Credit Authority Forest should be established and expanded through a program of annual additions and planting until a total recommended area of 4,743 acres has been acquired and reforested, the report said. Three thousand acres would be devoted to reforestation; 1,632 acres already have some tree cover.

Water storage areas to decrease the severity of floods and maintain summer flow of streams will be augmented by the reforestation scheme, which will be concentrated in the Townships of Mono, East Garafraxa, Erin and Caledon. As most streams in the watershed rise in these townships this is the area in which reforestation would have maximum effect on stream flow.

The report urged establishment of four multiple-use recreation-conservation areas totalling 1,800 acres. They would be the Meadowvale-Churchville, Limehouse, Terra Cotta, and North Caledon areas. Purchase of a stretch of the river below the Credit Forks for public fishing was suggested.

A 62 mile scenic route running from Lake Ontario to Orangeville and combining recreation and education should be established, the report said.

Increased urbanization, taking more and more farmland out of production, is a significant problem to the Credit Valley, the report finds, because of its location with respect to Metro Toronto and general lakeshore development. Much of the land being subdivided had been used for vegetable and small fruit farming for which it was well-suited by soil and climate.

The high proportion of waste land in the watershed is partly due to "institutional deserts" created along the rural-urban fringe, the report continues, the high tax on which prohibits most forms of agriculture.

While physical factors are not the only values governing the use of lands, the report observed, the authority should take the lead in "promoting the adjustment of land use to the capability of the land."

Under water measures, the report recommended the emptying of mill ponds no longer used for power purposes during the winter months to prevent formation of heavy ice which could cause flooding. Abandoned bridge piers, abutments and embankments would be removed from flood plains and river beds for the same reasons.

Where possible, properties within flood plains should be expropriated for recreational purposes and further encroachments be forbidden until thorough investigation of flood dangers has been made, it was said.

Local channel improvement work at Churchville, Meadowvale and Glen Williams should be carried out without delay at an estimated cost of \$174,024.00, the report recommended.

Measures were suggested for further reducing pollution from the Acton Tannery, where extensive efforts have already been made. Reinforcement of the dam holding final effluent back from the river was strongly suggested.

Reservoirs costing \$1,500,000 should be considered for early construction at Orangeville and Cataract, with steps being taken to acquire lands for reservoir sites at Belfountain, Silver Creek, Glen Williams and Georgetown. Community ponds should be constructed throughout the watershed, the report said.

Measures for combating results of silt from two gravel pits which are radically affecting the condition of the river were suggested. A dam constructed near one of these at Glen Williams reduced pollution but later there was renewed heavy silt, spoiling the appearance of the river and reducing its value for swimming. Trout spawning beds above Cataract have been endangered by a gravel operation nearby. The authority should insist on ample settling beds, the report says.

As a general recommendation, the report calls for sewage treatment plants to be adequately designed to handle growing populations in the area and prevent polluting of streams.

In the many spheres of conservation, the report calls for intensive education measures, from the preservation of historical sites to demonstration woodlots, co-sponsoring of

THE GEORGETOWN HERALD  
Wednesday Evening, May 30th, 1956  
PAGE 7

## TRAVEL NOTES



### ENGLAND

#### THIS SUMMER ?

Limited number of tourist class berths available early May and late July.

#### Reservations for Summer Sailings

1957

NOW BEING RESERVED

### JOHN R. BARBER

Travel Advisor  
JOHN R. BARBER AGENCY  
INSURANCE - TRAVEL  
TRiangle 7-3521 - MILL STREET



**DON HOUSTON**  
PLUMBING AND HEATING  
TR. 7-2506

## BOX PLANTS

All kinds of flowers and vegetables in boxes or flats—Onions, Cabbage, Tomatoes, Cauliflower, broccoli.

RALPH MILLER, Huttonville

These plants can be purchased at

**J. BRANDFORD'S**  
28 Queen St. - Georgetown

## CYCLOGYSEZ



ONE THING ABOUT STORMY WEATHER - IT KEEPS THE FAMILY AT HOME EVENINGS TO GET ACQUAINTED WITH ONE ANOTHER

## WIRING

Commercial and Domestic  
BEATTY PUMPS  
Liberal Trade-Ins

### Time Payment Plan

NOW AVAILABLE  
For Wiring and Supplies

**LEO'S ELECTRIC**  
Service  
COMMERCIAL & DOMESTIC  
BEATTY PUMPS  
24 HOUR SERVICE  
MILL STREET TR-7-2901

4-H clubs, tree farm movements, and publications by the authority.

## FARM NEWS

### Junior Farmer Events Well Up to Standard

J. E. W.

Lowville Community Park saw some 200 Junior Farmers in action on Saturday, May 19th. It was the occasion of the annual field day and the events in softball (boys and girls), volleyball, tug-of-war, and horseshoes, were not only keenly contested but run off smoothly under the leadership of president Jean Peterson and her various committee chairmen.

Palermo won the boys' softball championship; Milton club the girls' championship in the same sport; in the tug-of-war the Milton octette had too much "beef" for their rivals from Acton, Norval, and Palermo. The Milton Club also took top honours in girls' volleyball and boys' horseshoe pitching.

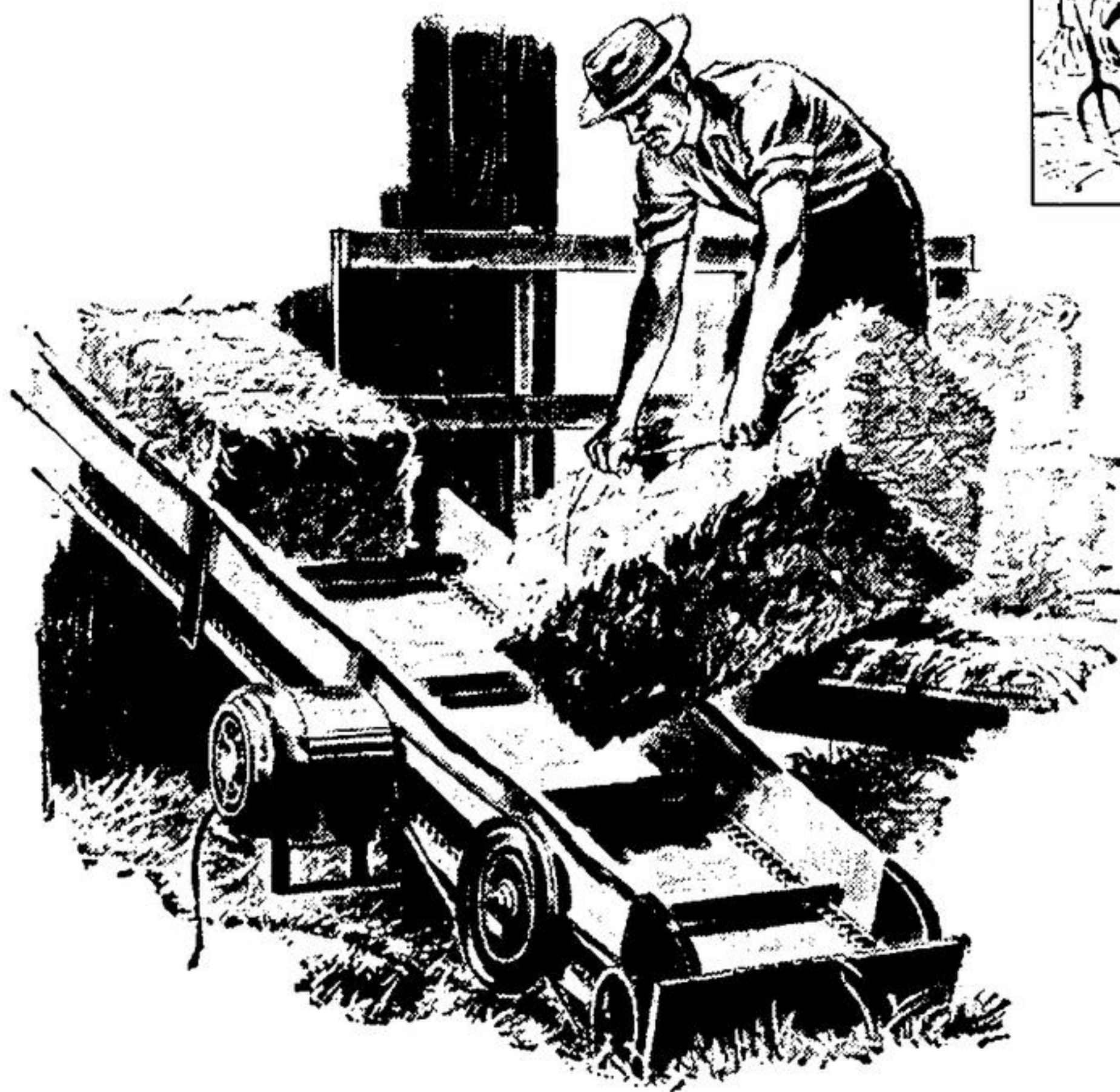
Saturday, June 16th, will see Halton's "all stars" competing in the Western Ontario inter-county event at the Ontario Agricultural College. A year ago Halton Juniors won the girls' softball and boys' horseshoe pitching top awards and in addition tied with Waterloo for the championship of the day.

Check the advantages of

**NATURAL GAS**

before you convert to

## ON THE FARM



*Today's Living is measured in Kilowatt-hours*

Ontario Hydro's first rural line, extending from Baden and Petersburg to St. Agatha, near Kitchener, was strung in 1913, and in that same year, the first farm service connected. Since that time, rural electrification has advanced steadily. Today in this, Hydro's Golden Jubilee Year, 87% of Ontario's farmers are served with electricity.

That the future holds numerous new and unique uses for electricity in agriculture is certain. Already, two-way radio is used

as a means of communication. Electrified hot beds step up the planting timetable. Electricity refrigerates seasonal products for year-round distribution, and lighting can be used to create artificial conditions more favourable for plant growth.

Electricity will continue to play an important part in the economic growth of Ontario, and it is the aim of Hydro to provide an adequate supply of electricity . . . so vital to our province's homes, farms and industries.



50  
YEARS OF PROGRESS

THE HYDRO FAMILY ASSURES YOUR ELECTRICAL FUTURE