

Insurance - Travel - Real Estate
Walter T. Evans & Co.
MILL STREET PHONE 183
GEORGETOWN, ONTARIO
"Serving Your Community for Over 30 Years"

FOR PLAIN AND ROCK FACE
CONCRETE BLOCKS
ALSO CHIMNEY BLOCKS
IT'S
ORIOLE CONCRETE BLOCK CO.
W. J. MCGOWAN
9th Line, Glen Williams Georgetown 777
Out-of-town callers, please reverse charges.

WE ARE PREPARED TO DO ALL TYPES OF
PLUMBING
New bathrooms installed or remodelled
Water Systems . . . Repairs of all kinds
KEN NASH
Phone 239R King Street
GEORGETOWN

\$9,000 Loss, Bakery Gutted at Hillsburgh

Fire brigade volunteers had to rush away from a ball game Wednesday night when fire broke out in the rear of a bake shop and for nearly two hours threatened to destroy the main business block of Hillsburgh.

Firemen from Guelph, Alton, Orangeville and Erin helped to battle the blaze, which destroyed Leader's bakeshop, two private garages and a warehouse, all frame buildings behind Main Street.

Damage was estimated at \$9,000. Firemen believed the blaze broke out in the bakeshop. Then it spread to the warehouse behind Leader's general store when the efforts of the Hillsburgh brigade with two small chemical units failed to halt the flames.

Firemen using water from Hillsburgh Dam and the creek, trained hoses on the burning buildings themselves and on adjoining buildings to prevent the fire from spreading. Village people formed a bucket brigade and emptied the warehouse of its contents, thus preventing greater loss.

Cause of the fire was undetermined.

One of the first to see the fire was Alex McLachlan, who said it started about 9 o'clock. He described the fire as blazing at the rear of the bakeshop, then suddenly it seemed to sweep underneath. "All at once everything went up," he said.

The two adjoining general stores facing Main Street were saved by firemen although some smoke and heat damage resulted when fire scorched the rear of both stores.

Harman Leader, proprietor of Leader's store, suffered the biggest loss, when his bakeshop, warehouse and garage were completely destroyed.

Lacey Brothers general store itself was not damaged though part of their adjoining warehouse was touched by fire, and their garage razed to the ground.

For nearly two hours the flames posed a threat to an entire business block. Employees of W. A. McLachlan and Son, a hardware store and car dealer agency evacuated several new cars when blazing tinders began to fly down the street. Alex McLachlan handed out pails to the village people who formed a bucket brigade.

Firemen formed a reservoir digging a hole in the creek bottom and letting water out of Hillsburgh dam. It was the vast water supply that saved the two stores and possibly the entire business section of the village from destruction, said Jim Robertson, acting chief from Erin.

Witnesses said they know right away that the fire would get "out of hand" without outside help. John Root, MLA, who lives near Hillsburgh, had a call placed to the Orangeville brigade.

Acting chief Robertson said the fire was "minutely within getting out of hand." Only the arrival of firemen from outside saved the business section, he said.

The Erin brigade arrived on the scene shortly after 9 p.m. They found the water supply short for the creek was half dry and immediately the brigade scraped a hole in the creek bottom and had the water in the dam above released, forming a reservoir. Only the Erin and Orangeville trucks were operated but the other volunteers gave a hand with the hose.

Robertson termed the fire the "most dangerous" in Hillsburgh to his recollection.

After an absence of many years, a roller coaster is back at this year's Canadian National Exhibition. One of the most up-to-date and safest on the continent, the new exhibition Flyer will add thrills and excitement to the C.N.E. midway.

CHURCH NEWS
St. George's Church
Archdeacon W. G. O. Thompson,
Rector

Fourteenth Sunday after Trinity:
Sunday School 10 a.m.; Holy Communion 11.00 a.m.; Evensong 7.00 p.m.

The Rector expressed the goodwill of himself and congregation, especially Sunday School and Choir to Margaret Sargent at Evensong on Sunday, with commendation of faithful service. St. Alban's Church, Glen Williams Fourteenth Sunday after Trinity: Matins and Litany — 9.30 a.m.

Knox and Limehouse Presbyterian Churches
Rev. Alex J. Calder, B.A., B.D., Mrs. Edgar Gowland, A.T.C.M., Organist and Choir Leader
Mr. Joseph Young, Carillonneur

Knox Church
Church School — 10 a.m.
Public Worship — 11 a.m.

Limehouse
Church School — 1.30 p.m.
Public Worship — 2.30 p.m.

St. John's United Church
Rev. John M. Smith
Norman Laird, Director of Music
10 a.m. — Sunday School
Regular classes for all ages.
11 a.m. — Morning Worship
"A Man's Life and His Work."
11 a.m. — Junior Worship and Nursery.

Georgetown Baptist Church
Rev. A. J. Barker, B.A., B.D.
— Labour Sunday
10.00 a.m. — Church School
11.00 a.m. — "Honorable Work"
7.00 p.m. — "Workmen's Compensation."

Norval Pastoral Charge United Church
Rev. C. C. Gilbert
Norval — 10 a.m.
Glen Williams — 11.15 a.m.
Home Church — 7.30 p.m.

Zion Tabernacle
Rev. F. M. Fletcher
Services each Sunday at 11 a.m. and 7.30 p.m.
Sunday School — 9.45 p.m.
We welcome you.

Norval and Union Presbyterian Churches
Rev. G. Lockhart Royal
Norval
10.00 a.m. — Praise Service
Union
10.00 a.m. — Sabbath School
11.15 a.m. — Praise Service

Norval, Hornby, Stewarttown Church of England
Rev. J. A. Maxwell, B.A., L.Th.
St. Paul's Church, Norval
7.30 p.m. — Evensong
(Except 1st Sunday of the month 11.00 a.m. — Holy Communion)
St. Stephen's Church, Hornby
11.00 a.m. — Morning Service
(Except 1st Sunday of the month 3.00 p.m. — Evensong)
St. John's Church, Stewarttown
10.00 a.m. — Morning service
(Except 1st Sunday of the month, 7.30 p.m. — Evensong)

Holy Cross E.C. Church
Rev. Fr. V. J. Morgan
1st, 3rd and 5th Sundays:
Mass at 11 a.m.
2nd and 4th Sundays:
Mass at 9 a.m.

GUELPH DRIVE IN THEATRE
On Speedvale Ave. East at Northern City Limits

THURS. FRI. — SEPT. 3 - 4
COPPER CANYON
Color
Hedy Lamarr — Ray Milland

SAT. MON. — SEPT. 5 - 7
LEMON DROP KID
Bob Hope — Marilyn Maxwell

TUES. WED. — SEPT. 8 - 9
WILDCAT
Richard Arlen — Arlene Judge

THURS. FRI. — SEPT. 10-11
TEN TALL MEN
Burt Lancaster, Jody Lawrence

CHILDREN'S PLAYGROUND
2 SHOWS NIGHTLY
FALL OF CLEAR
Children under 12 years FREE

The HART Shoe
FOR MEN
In Georgetown, exclusively at
SILVER'S

Dancing EVERY SATURDAY
SING - SONG MOVIES — AMATEURS
SUNDAY NITES
Huttonville Park
BRAMPTON 357 J 13

GRAVEL TOP SOIL FILL
CEMENT BUILDING BLOCKS
GENERAL TRUCKING
ERNIE Thompson
Glen Williams — Phone 799J

Jim Mudie
ASPHALT ROOFING
New Roofs and Repairs
TV Aerials Installed
PHONE 709 r 14

STEEL TANKS
200, 500 and 1,000 gallon
In Stock
SPECIAL — 20 ONLY
200 gallon space heater tanks
DON HOUSTON
Plumber
PHONE 547W

Consistant Advertising Brings Results



Reduced fares

TO THE CANADIAN NATIONAL EXHIBITION
AUGUST 29th to SEPTEMBER 12th (Except Sunday)
DIRECT INTO THE GROUNDS

Reduced Return Fare **\$2.00** Includes Exhibition Admission

For children's rates see your Agent

LEAVE GEORGETOWN 8.53 a.m.
LEAVE EXHIBITION 10.30 p.m.

(Daylight Time)
Exhibition passengers travelling on regular buses will transfer at Toronto Bus Terminal to buses running into the Grounds.
Tickets and Information at
CORNER CUPBOARD - PHONE 89

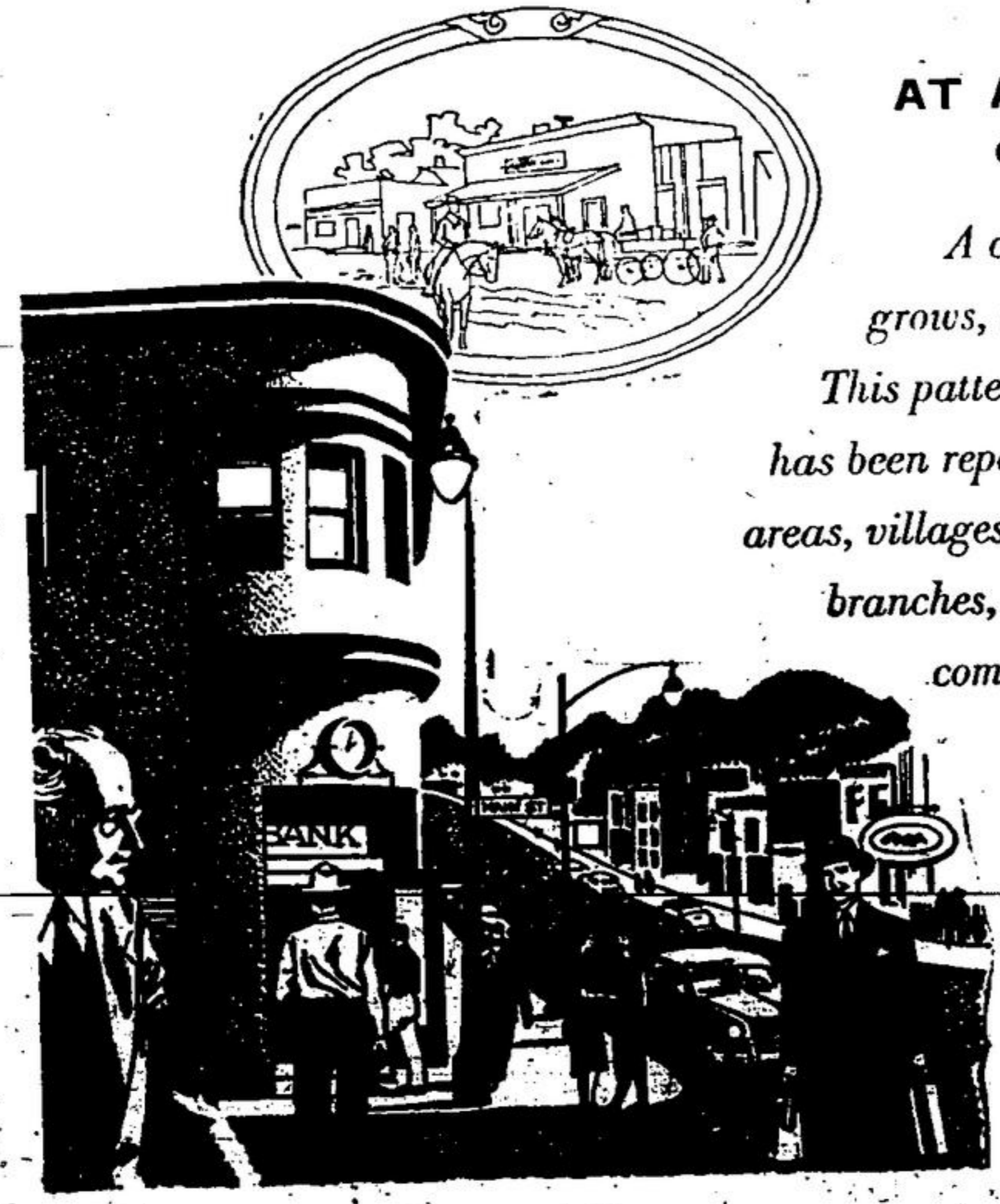


Why Only Half?
MANY property owners carelessly gamble on an amount of fire insurance which may hardly cover half the value of their property. Wiser persons gladly pay a few dollars more for complete insurance. Isn't it worth while to know you are fully protected?
ELMER C. THOMPSON INSURANCE SERVICE
JOHN R. BARBER
F. Kersey — E. C. Thompson
Mill Street, Phone 119



GO by TRAIN

TO THE TORONTO EXHIBITION
AUGUST 28 TO SEPTEMBER 12
FARE AND ONE-HALF
FOR THE **ROUND TRIP**
Good going Thursday, August 27 to Saturday, September 12, inclusive
Return limit—September 16
*Full information from any agent



AT A CORNER ON MAIN STREET

A community springs up and, as it grows, a branch bank opens its doors.

This pattern, basic in Canada's development, has been repeated again and again in pioneer areas, villages, towns and cities. Through local branches, the chartered banks bring to small communities, as well as large, the same broad range of banking service.

There are now 3,800 branches of Canada's chartered banks serving the banking needs of Canadians, 700 opened in the past ten years

THE BANKS SERVING YOUR COMMUNITY