

THE UPPER CANADA BIBLE SOCIETY

presents
"BIBLE ON THE TABLE"

a sound film depicting the work of the Society
ST. JOHN'S UNITED CHURCH
WEDNESDAY, MAY 13th — 8 p.m.
A representative of the U.C.B.S. will be present and address the meeting.
Everybody welcome: Come and support the efforts of the local Society.

LEARN TO DRIVE
in
GEORGETOWN
EVERY THURSDAY
9 a.m. to 9 p.m.

- DUAL CONTROL CARS
- EXPERT INSTRUCTORS
- FULLY INSURED
- FINAL LESSON INCLUDES TEST

FOR INFORMATION CONTACT

SHIRLY'S DRIVING SCHOOL
57 QUEEN ST. W. — BRAMPTON
Phone Brampton 1997 (Reverse Charges)

CUSTOM
TELEVISION SERVICE

BY

Jimmy Brown

COMPLETE TV & RADIO SERVICE
including custom installation

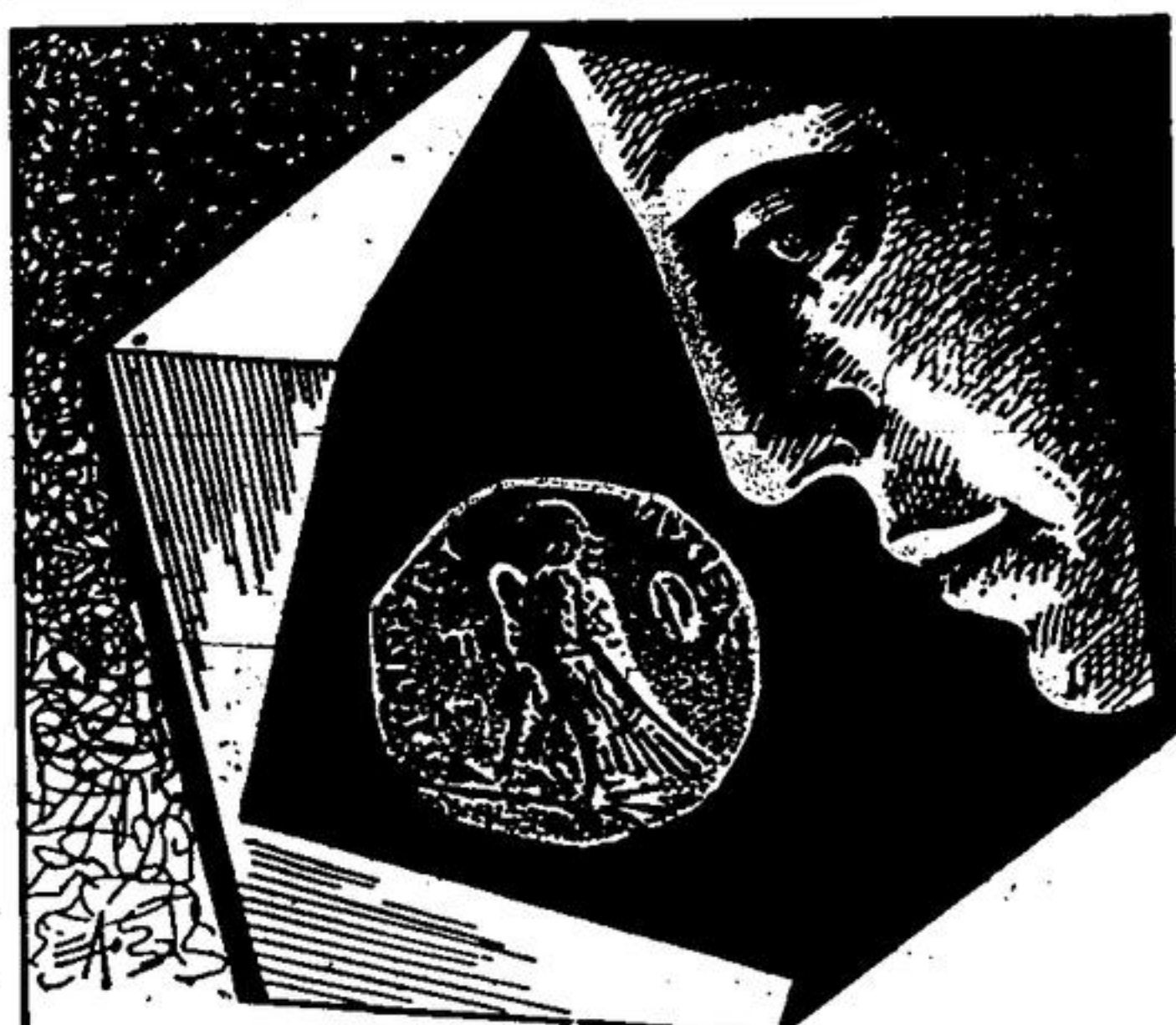
FACTORY TRAINED WORK GUARANTEED

JIMMY BROWN

CORDARO BLDG. — MAIN STREET

GEORGETOWN 418

Residence: Phone Brampton 1722M



FOUND
a hidden talent

Discover money's talent
for opening opportunity

OPEN A
SAVINGS
ACCOUNT AT

The Canadian Bank
of Commerce

**Brucellosis Brings Loss
Set at Hundred Million**

The prime function of any public health organization is to prevent disease. This can only be achieved through educating the public as to characteristics of a disease which can be modified, thereby preventing, lessening the severity of, or preventing further spread of the condition. People are entitled to receive a statement of established facts regarding a disease, because fundamentally, each infectious disease lays down its own laws and exacts its own penalties from those who infringe.

Brucellosis or Bang's Disease is an infectious disease caused by a minute organism known as Brucella. Cattle, goats and swine are most commonly affected although horses, sheep, dogs, fowl and many species of wild animals have been found infected. In their natural animal host the germs cause no easily recognizable symptoms except for those associated with aborting. This results in greater difficulty being experienced in detecting the disease and instigating control measures, and may be responsible for many human cases being contacted which might have been averted had symptoms been readily visible in the cattle.

Infection may gain entry to a herd in various ways, but the buying and selling of stock, which results in a heavy traffic of animals from farm to farm and district to district, is by far the most important factor in the spread of the disease. The germs may be carried by contaminated feed or bedding, infected bulls, or unpasteurized milk. Rats, and other rodents are now known to be implicated in the transfer of germs from one premises to another. Once introduced into a herd, the organisms may enter individual animals through the mouth, eye, skin, (abraded or unbroken) or genital tract.

On primary exposure to infection a higher percentage of abortions will occur in a herd than may be expected after the disease has become well established. Though the germs affect the genital organs of both sexes, localization of infection in these organs seldom occurs until sexual maturity has been reached, so adolescent infection in therefore not often permanent.

Little Information

So incomplete is the available information on the amount of Brucellosis in goats, sheep and swine that it is difficult to come to any definite conclusion regarding the portion of 1952 in these industries attributable to Brucella, but it is extensive. Few cattle breeders realize the full significance of the disease. The losses in calves are apparent to all, but losses due to temporary and permanent sterility, decreased milk yield, breaks in the ranks of purebred families and the lower sale value of infected cattle, not to mention the danger of humans contracting the disease, are stupendous in size. It is estimated that 5 per cent of the cattle in the USA have Brucellosis. Other reports show milk production in infected herds is reduced 22 per cent and the calf crop by 40 per cent. Bureau of Animal Industry has estimated that a normal cow calves every 11.5 months, infected cattle every 20 months, and one out of five of these infected cows are rendered permanently sterile.

Breeding trouble, sterility and mastitis caused by Brucella infection increase needed herd replacements by about 30 per cent. In the United States the annual loss suffered due to Brucellosis has been conservatively estimated at \$100,000,000 proportioned as follows: loss from decreased milk yield \$50 million; from loss of calves \$5 million; for purchase of herd replacements, \$32 million; and loss caused in other stock \$13 million.

In Humans

Brucellosis in humans involved most frequently the young male adults. Children less than 14 years of age rarely contract the disease and above that age the proportion of reported cases in males as compared to females is about four to one. Figures from the United States show that the number of human cases reported has reached 7,000 annually, and is still increasing.

Rarely, if ever, does one human contract the disease from another human. Therefore, prevention and control of Brucellosis in man depends entirely upon its control and eradication in domestic animals. Milk from herds which may be infected constitutes a dangerous source of infection for humans. It should be pasteurized before being consumed. This can easily be done in the home by heating the milk in a double boiler to 143 degrees and maintaining that temperature for 30 minutes, the milk will then be completely safe.

There is no known cure for Brucellosis in domestic animals. Eradication depends upon the elimination of diseased animals from herds, and vaccination of calves to build up herds of animals resistant to the infection.

**EVENING OF EUCHRE
FOR FARMERS CLUB**

An evening of progressive euchre took the place of the usual program when members of Terra Cotta farmers club met on Monday at the home of Mr. and Mrs. David Andrews.

Mr. C. Judge and Betty Jean Anderson won first prizes at cards, and travelling prizes were awarded to Mrs. Wilfrid Leslie and Arthur McKane.

The ladies held a short meeting before cards, with president Mrs. Jack McDonald presiding, and members answering roll call by "Something I remember about my grandmother." Mrs. George H. Leslie prepared a paper "Wholesome homes are stepping stones to a great country" as a feature of the ladies meeting.

Campbell Sinclair thanked the hosts and the committee who arranged the meeting. Mrs. R. S. Leslie and Mrs. Clifford Cook. Next month the club will meet at the home of Mr. and Mrs. F. L. Thompson.

FISHING TACKLE AND EQUIPMENT

SEE OUR STOCK OF ----

Fly Rods - Spinning Rods - Bait Casting Rods -
Fly Reels - Spinning Reels - Lines - Lures, Etc.

USE OUR LAY-AWAY PLAN

HUTCH'S SMOKE SHOP
MAIN STREET

FOR PLAIN AND ROCK FACE

CONCRETE BLOCKS

ITS

ORIOLE CONCRETE BLOCK CO.

W. J. MCGOWAN

9th Line, Glen Williams

Georgetown 777

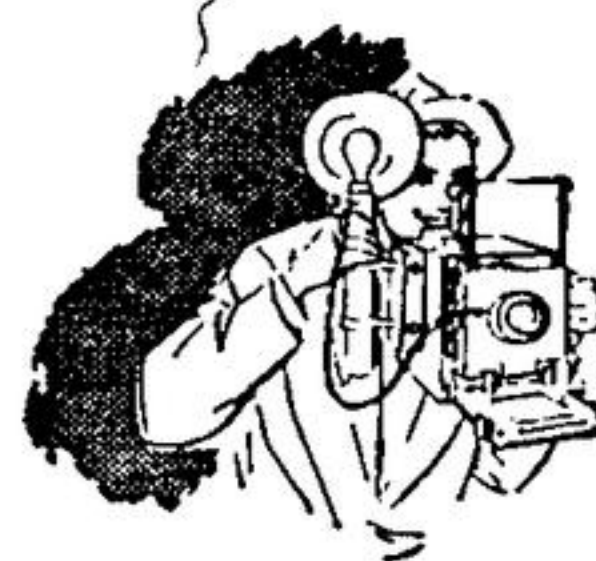
Out-of-town callers, please reverse charges.



Baseball Spring Training

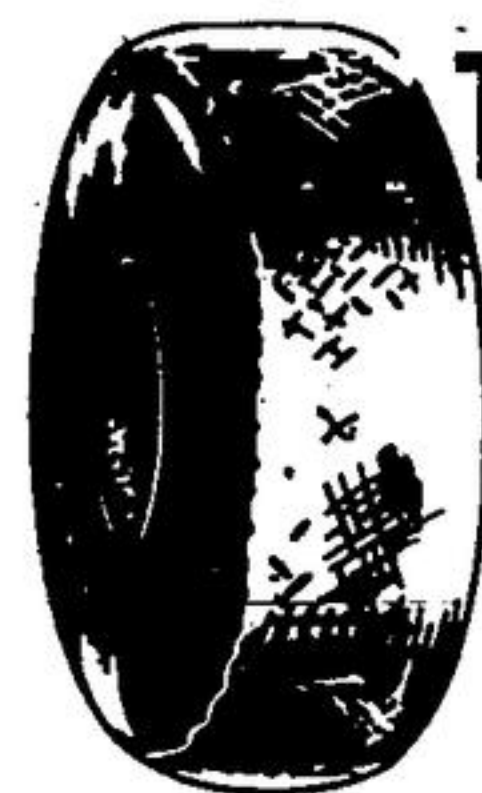
"Strike!"

by Nat Turofsky



"A good catcher is indispensable to a pitcher. His knowledge of batters can mean the difference between a hit and a strikeout. No doubt here that the pitcher got the catcher's signal right. Strike!"

O'KEEFE'S BREWING
COMPANY LIMITED



TRADE TROUBLE FOR DOUBLE!

We'll pay you up
to twice as much
for this...

90% of tire trouble occurs in the last 10% of the tire's life. Why not trade in your trouble now... for double allowance!

When you
come to us
for this...



DON'T MISS OUR BIG
OFFER—COME IN TODAY!

Our double trade-in allowance offer is good for a limited time only. So come in today to trade your old worn tires for long-mileage, guaranteed Goodyear tires.

MARATHON only
by **GOODYEAR** **18.95**
LESS
DOUBLE ALLOWANCE

**SAXE
MOTORS**

PHONE: 152