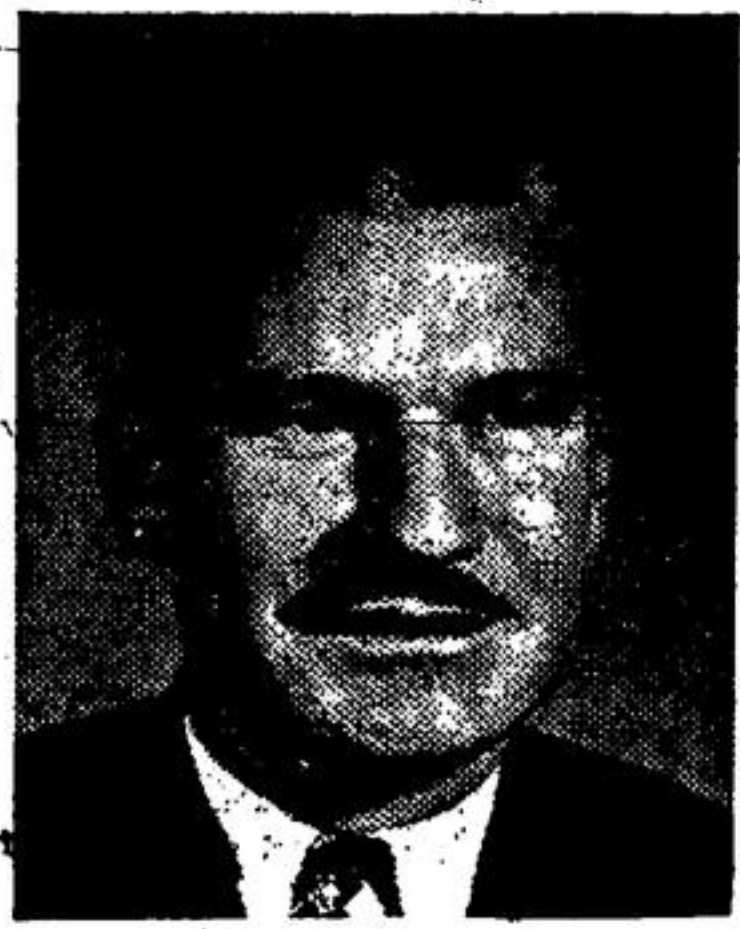


New O'Keefe's Appointment



HENRY H. FARMER

O. J. McKeough, Sales Manager, O'Keefe's Brewing Company Limited announces the appointment of Henry H. Farmer as O'Keefe's representative for Georgetown, Guelph and Stratford. Mr. Farmer is a native of Stratford and a member of the Stratford Rotary Club.

PLAYING AT CASINO

Billy Meek, who entertained at the Lions Club Ladies' Night, held recently at Hilltop Lodge is billed for a week's engagement at the Casino, Toronto, starting July 26th.

In the Great Lakes alone is one-half of the fresh water supply of the entire world.

Armadillos are always born in groups of four and of the same sex.

ASHGROVE

Saturday Bride Was Honoured at Shower

On Monday evening, July 16th, a shower was held at the home of Mr. and Mrs. Hector Bird for Jessie Wingfield and Jack Milton when one hundred friends and neighbours from Waterloo school section and Ashgrove community gathered together. Mrs. Clayton Dick was the chairlady for the evening and opened by all singing "The Maple Leaf." Norman Bird Jr. played a piano solo, a humorous reading by Mrs. Thomas Gilfen, duet by Barbara Cunningham and Bernice Wilson and then the lovely gifts were brought in and opened by Jessie and Jack. Mrs. Leslie Gilfen, the W.I. president, presented Jessie with a large wall mirror. Both bride and groom thanked everyone and the evening closed with lunch.

The family picnic of the WMS Mission Band and Baby Band was held on Wednesday afternoon, July 18th at the lovely farm home of Mrs. Vern Pickett. There was a large attendance of children and mothers. Mrs. Frank Wilson, first vice president, opened the meeting in the absence of president Mrs. Hector Bird who came later. The hymn "For the Beauty of the Earth" was sung, a helpful devotional service was conducted by Mrs. Walter Brownridge, Valerie Nurse and Barbara Cunningham each favoured with a piano solo. Mrs. Rev. F. Ainsworth gave a very interesting talk on family life in Japan illustrating it with pictures, curios and Japanese costumes. Following this the children went for a swim, then back to the lawn where Mrs. J. H. Hunter conducted games. There was a sale of articles to raise supply money for the Mission Band, then

Mrs. Horace Barnes spoke a few words of appreciation to Jessie Wingfield who has been such a successful teacher of the Beginners class in Sunday School and Nancy Hunter presented Jessie with a picture. Lunch ended a lovely afternoon.

Jantje and Siestke Siderius, of Brampton visited for a few days last week with Miss Marilyn Wilson.

Mr. and Mrs. Wm. Towers and daughters Sylvia and Jean of Guernsey, Channel Islands, are visiting at Mr. and Mrs. Robert Cunningham's.

Our deepest sympathy goes to the Bridgen family in the death of their mother at Hornby last week.

Mrs. Richard Hewins of Hamilton has been visiting with her sister, Mrs. Walter Brownridge and Mr. Brownridge.

GLEN WILLIAMS

Bob Lucas Home from Camp After Operation

Bob Lucas, who was at Camp Ipperwash, underwent an appendix operation at the Military Hospital in London, returning home Tuesday of last week.

Mr. and Mrs. Wellington Riggs and family have just returned from a trip through the West, where they visited with relatives and saw a great many of the beauty spots both in Canada and in the States. Mrs. Riggs' sister, Miss Vera Feist, of Wembley, Alberta, returned with her for a visit.

Mr. and Mrs. Clifford Davison, Wayne and Patsy, Mrs. William Davison and Elizabeth Ward spent a few days travelling in Northern Ontario, visiting at Algonquin Park and Parry Sound. On their way home they visited with relatives in Creemore.

GET SET for Vacation

"IDYLLWYLD"
LAKE OF BAYS, BAYSVILLE, ONTARIO
For a happy holiday in friendly atmosphere.
Good Food, Comfortable Accommodation
New Tennis, Shuffleboard Courts, Excellent Beach, Canoeing.
Write for Folders.

VALLEYVIEW CABINS
HOUSEKEEPING CABINS
2 miles north of Hurstville
on No. 11 Highway
"Where Georgetown Meets"
Mr. and Mrs. Pete Hunter
are your hosts.

Central Tourist Home
On beautiful Lake Nipissing
Rooms with bath — Meals
Fishing and Hunting
M. J. DWYER — Callander

—Still time to plan your vacation through these advertisements.

NOTICE TO CREDITORS

ALL PERSONS having claims against the estate of Samuel J. Sharpe, late of the village of Campbellville, who died on or about the 16th day of July, 1947, must file particulars of same with us on or before the 4th day of August, 1951. After that date the estate will be distributed having regard only to claims then filed.

DATED at Milton this 23rd day of July, 1951.

Dick & Dick, Solicitors for the Administratrix,
8-1 Milton, Ont.

A GOOD SELECTION OF USED BINDERS

One New No. 18 Ten Ft.

Power Take-off Binder

IHC 2-row Corn Binder

LIKE NEW

Murt Allison MASSEY - HARRIS SALES & SERVICE

Phone 100 - Mill Street

WRESTLING

FRIDAY, AUGUST 3 8.45 P.M.

TEAM MATCH

2 FALLS OUT OF 3

The Mask & Wild Bill

Cody

vs.

Don Shoures and Johnny Barclay

One other feature match

1 hour time limit

MILTON ARENA

Ringside 75c

Adult: 50c Children: 25c

Highest Cash Prices

Dead Stock

Horses \$2.50 ea.
Cattle \$2.50 ea.
Hogs .50 cwt.
according to size and condition.

PHONE FERGUS 15 (Collect)

DARLING & COMPANY OF CANADA, LIMITED

FARM NEWS

Pasturing New Seedings Halton Experiment

Some of our readers may recall that in our column in the issue of the first week in May, we made some observations based on a visit to a field which had been seeded in 1950. A good catch of seeds was secured on this particular 24-acre field. Owing to the scarcity of pasture in the late summer the owner of necessity pastured 18 acres of the field, but fenced off 6 acres adjoining the bush. Following our visit to the field in late April we reported, "There is still a good stand in both sections of the field but there is an almost unbelievable difference in the vigor and growth of the two sections. We also stated in the same article: "Judging by present appearance we would expect quite a difference in the yields of hay off the two sections of the same field." Thanks to the farm owner we are now able to present the final story. The two sections were baled separately. On the 18-acre section which was pastured he got a total of 550 bales while on the 6-acre section unpastured there was a total of 626 bales. Assuming that the bales averaged fifty pounds each, this works out a yield of three quarters of a ton per acre from the pastured acre, against 2 1/2 tons per acre off the unpastured area. We would remind our readers that this story comes from two sections of the same field — both sown at the same time with the same seed mixture, and with the same amount of commercial fertilizer. True the six acre section was cut ten days later, but in other respects the only difference in so far as we are aware is the 18 acres was pastured while the 6 acres was not. It should be unnecessary to point out the moral to this true story.

NOW AVAILABLE IN CANADA

AUTOMATIC TRANSMISSION

Owner-proved by tens of thousands now yours for effortless driving in

FORD and Monarch cars

Here it is! — the newest, most advanced Automatic Transmission of all—now offered as optional equipment on all new Ford and Monarch cars. Road-proved and owner-proved by tens of thousands of satisfied drivers who are now enjoying the extra smoothness, the magnificently effortless driving pleasure made possible by this latest, finest Automatic Transmission.

The clutch pedal and gear shifting are completely eliminated! This newest Automatic Transmission combines the smoothness of oil-cushioned drive with the flexibility and control of automatic operation unmatched by any other type of Automatic Transmission.

Until you enjoy a "Test-Drive" in a Ford or Monarch with Automatic Transmission, you'll never know the extra acceleration—the extra "passing power"—the extra-safe engine braking downhill—that only this newest and finest Automatic Transmission can give. See your Ford-Monarch Dealer for a demonstration... and enjoy the driving surprise of your life.

*Automatic Transmission optional at extra cost. Fords and Monarchs are also available with Standard Transmission or with Overdrive.



Flashing Getaway Leave it to Ford and Monarch to perform a "fast" pickup in Automatic Shifting! The outstanding combination of a remarkable torque converter PLUS a fully automatic gear transmission bring you smooth, surging starts with no need for racing your engine!



NO CLUTCH PEDAL... NO GEARS TO SHIFT—Just set the Drive Selector, which is mounted on the steering wheel, then forget about clutching, forget about shifting... with Ford and Monarch Automatic Transmission! It's more automatic than most other drives, yet you have complete control with far greater flexibility. And it can't be touched by most systems for its efficiency of operation.



Easier "rocking" in snow or mud—Stuck in the mud? Simply move the Selector to Low (L) for extra traction. Want to "rock" your car out of snow or a rut? Just move the Selector back and forth from Reverse to Drive. And you'll find it you ever need a push to start, the engine starts at ease, too—speeds with the Automatic Transmission.



Instant Acceleration You can drive all day and never move the selector from Drive. In this position, for quick pickup on passing or climbing steep hills, you simply press down on the accelerator and the closest throttle-down shift takes you out of high into intermediate automatically, requiring no effort on the part of the driver.



Permits use of engine for braking safety—You're safer on hills or slippery roads with the new Ford and Monarch Automatic Shifting because the engine actually helps to slow the car down. You can flip the Selector to Low (L) at any speed with complete safety when extra engine braking is needed.

SEE YOUR FORD-Monarch DEALER NOW!

GEORGETOWN MOTORS Your Friendly Ford Phone and Monarch Dealer 280w