

School Board View Plans for New School

Plans are progressing for Georgetown's new auxiliary public school on which construction will start this spring.

Last Wednesday, John C. Parkin, representing the architects, John B. Parkin Associates, met with the School Board to present the initial sketch plans. Several changes were made and Mr. Parkin will return to a board meeting on March 14th with new sketches embodying these changes.

The \$100,000 school which will be built on property on the highway being purchased from Jack Tost, will contain six classrooms and an auditorium, as well as a combination health and lady's teachers' room and a principal's office.

It will take care of increasing enrolment which the present school building cannot accommodate. So serious has the problem become that next year it is probable that a hall will have to be rented and another classroom established.

The new school will face the highway and will be built on vacant property east of the high school. It will be ready for occupancy in September, 1952.

Shaving was originally a protective measure, since long beards were easy for opponents in combat to seize.

MASSEY-HARRIS 2-Plow 22

with big 10-34 tires has plenty of traction in all soil conditions



... better traction means less slippage, more drawbar power for tough jobs

- You get traction to handle all your work with the 22—and these better farming advantages too...
- 23.91 Maximum Drawbar Horsepower
- Wide, Roomy Platform
- Clear, Unobstructed Vision
- The Weight and Power to Handle Both Mounted and Pull Behind Tools
- Lowest Price Per Drawbar Horsepower in the 2-Plow Field
- Velvet Ride Seat

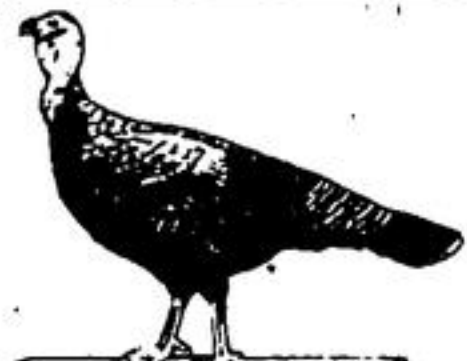
See us soon for all the details on the Massey-Harris 2-Plow 22

PRICE \$1545.00

Murt Allison

Mill Street — Phone 100

Build up your Turkey Profits with Blatchford's



TURKEY FINISHER (MASH & PELLETS)

TURKEY GROWER (MASH & PELLETS)

CRUMBLER

TURKEY STARTER

TURKEY BREEDER (MASH & PELLETS)

Sound bone and body structure, with a proper distribution of weight is all important when it comes to marketing turkeys.

Blatchford's Turkey feeding programme gives you the best foundation for turkey profits.

Come in and talk turkey—we'll be happy to tell you how Blatchford's Plan can help you.

Georgetown Feed Mill
W. A. GIBSON, PHONE 100

PUBLIC SCHOOL NEWS

VARIED ACTIVITIES VALENTINE'S DAY

Valentine Day was observed in the various classrooms with the usual onslaught of card exchange, treats, and amusements.

Grade Eight enjoyed a box social with George Andrews auctioning the boxes brought by the girls of the classroom. The boys bought the chocolate, milk. \$4.40 was raised for Red Cross Funds.

In some classrooms Red Cross meetings preceded the Post Office. In one classroom alone, 1088 Valentines passed through the gaily decorated box. This speaks for itself.

Films shown on Tuesday afternoons to senior grades proved very educational. "New Zealand" taught Social Studies, "Spiders" was a science lesson, and "Posture" was a health study.

On Monday after school the senior boys hockey team went to Milton, to bring back a victory of 5-2. Sandy Mackenzie was Georgetown's goalie and goals were obtained by Fred Dickenson (4) and Tom Palmer (1). Although the ice was slow, everyone reported a good time.

Miss Laura Scott and Miss Marie Lindsay have both resumed their duties after a few days' absence. Miss Rowena Stull took charge of their classes during their absence.

Miss Ethel Brown, teacher-in-training at Hamilton Normal School was visiting Georgetown school for the second time this term. She was observing and doing practise teaching in Grade Seven, under the guidance of Mrs. James Evans.

CLEARING AUCTION SALE of LIVESTOCK, FARM IMPLEMENTS, HAY, GRAIN, ETC.

in the Twp. of Erin, with instructions from WILLIAM LAWRIE to sell by auction at his farm lot 3, Conc. 9, situated about 4 miles south of the village of Erin FRIDAY, MARCH 16th commencing at 1 o'clock, the following:

HORSES & HARNESS — One grey mare 14 years; one black mare, 12 years; new set of harness with breeching and back band.

CATTLE — Registered Ayrshire cows (bred by Maple Cattle Breeders' Association); Lady Mary, 5 years old, just bred; Credit Glen Jubilee, 4 years old, bred Sept. 22nd, 1950; Credit Glen Belle, 4 years old, bred 2nd August, 1950; Glenlaw Susan, 2 years old, bred 16th Dec., 1950; Proud Swank, (progeny of Lammormoor bull); Glenlaw Evelyn, born 17th July, 1950; Glenlaw Gertrude, born 18th June, 1950; Glenlaw Christie, born 1st July, 1950; one grade Ayrshire cow, 6 years old, bred 8th Nov., 1950; one grade Ayrshire calf, born 30th Sept., 1950. (all calves vaccinated and cattle TB tested (area.) Charlesby Lucky Charm, 4 years old, bred 1st July, 1950, to Lammormoor Proud Swank; Erin's Lucky Girl, 9 yrs. old, due at date of sale.

FARM IMPLEMENTS — Mount Vernon fertilizer spreader, 10' box, horse or tractor hitch; Cockshutt horse drawn mower, 5 ft. cut; Massey Harris 11 hoe seed drill; two all steel 13 tooth Cockshutt cultivators; one horse drawn Cockshutt disc; one four section harrow and draw bar; one Cockshutt dump rake; one 14' flat hay rack; one set of sloop sleighs; one rubber tyred wagon, one wagon box; one horse Cockshutt scuffer; one 200 lb. beam scale; one DeLaval cream separator; (all of foregoing equipment practically new); one Massey Harris 13 hoe seed drill (good condition); one Massey Harris No. 7 manure spreader (good condition).

HAY & GRAIN — About 10 tons good quality baled mixed hay; quantity of Cartier oats and Byng barley; quantity of loose oat straw.

MISCELLANEOUS — About one ton commercial fertilizer 2-12-6; quantity of dry stove wood and old lumber; lawn mower and garden tools; lawn roller; 30 rods page wire fencing; one cyclone seeder; forks; shovels and numerous other articles; one four section feed bin; hay car; long hay silage; 150' of one inch rope; Beatty water trough; wheel barrows.

POULTRY — One hundred White Rock hens; brooder house, insulated, 10'x12'; two range shelters, 10'x12'; Jamesway coal oil brooder stove.

HOUSEHOLD EFFECTS — Nordheimer upright piano, excellent condition; mahogany piano bench; piano lamp; Crosley Shelvador electric refrigerator, 7 cu. ft. 25 cycle; General Electric washing machine (25 cycle); large four burner Entorprise electric range; porcelain kitchen table with flour and sugar bins attached; porcelain sink with stand; two electric toasters, one electric iron; 2 card tables; kitchen chairs; garden furniture; one single metal bedstead, mattress and spring; one double bed spring and mattress; one large bureau; one small desk and bookcase; one General Electric mantle radi; one Premium Duplex vacuum cleaner; one steel bed couch; kitchen scale, 25 lbs.; and numerous other articles.

TERMS: Cash with clerk on day of sale. No reserve as farm is sold. All articles to be removed by March 22. McEnery & Son, Clerk. W. A. GIBSON, Auctioneer.

Young People Conduct Sunday Worship Service

A service of worship of special interest to young people was conducted in St. John's United Church on Sunday by Rev. John M. Smith and members of the Halton and Hamilton Y.P. Presbyteries. Miss Lois Harrison, Visitation Convener of the Hamilton Presbytery read the

Scriptures from the Psalms and St. Matthew's Gospel and offered prayer. Miss Mickey Portch, president of the Halton Presbytery, spoke to the congregation on the importance of young people's work within the church. Her message was entitled: "Where do we belong in the church?" The choir sang the anthem "O For a Closer Walk With God."

A group of young people from Hamilton and the members of the local YPU had lunch together and spent the afternoon in a period of Bible Study, prayer and singing and also discussed ways and means of strengthening young people's work both locally and nationally.

The evening worship was conducted by Rev. J. M. Smith who spoke on the subject "The Transforming Touch". Miss Isobel Dobson accompanied the congregational singing at the piano.

CLEARING AUCTION SALE TOWNSHIP OF ESQUESING

Reg. Guernsey Cattle, Tractor Implements, Household Effects, etc.

The undersigned has received instructions from DUNCAN BRIMROSE To sell by public auction at his farm, lot 32, con. 4, situated on the Esquesing-Erin town line, 3 miles north of Acton, on

TUESDAY, MARCH 13th at 1 o'clock the following:

HORSES — Jane Rita, registered thoroughbred mare, 10 years, due to foal in April to Homer; Miss Ironsides, registered thoroughbred mare, 8 years old; some harness.

REGISTERED GUERNSEY CATTLE — Nina Twinkle, born Nov. 12, 1944, in full flow, bred October 27; Creekbank Rose, born Feb. 25, 1942, in full flow, bred Dec. 31; Valors Easter Miss, born March 28th, 1948, in full flow, bred Oct. 2; Valors Moneta, born May 26, 1948, in full flow, bred Sept. 7, 1950; Molly Twinkle, born Nov. 12th, 1944, in full flow, bred Oct. 5; Dunrose Kay, born June 19, 1949, bred Jan. 5; Creekbank Winona, born July 18, 1943, in full flow, bred Feb. 14th; Norsman Dian, born July 8, 1948; due about time of sale; Grade Guernsey cow, due in April; Grade Guernsey cow, due March 27; 2 Guernsey heifers, bred Dec. 30th; 1 yearling heifer; 4 registered Guernsey calves; 1 Grade calf; registered Guernsey bull, Bona Vista Actors Madina, born March, 1950. This is a well-bred bull and has won many prizes in showing. The above cows are a choice lot and all artificially bred to Maple Breeding Unit sires.

TRACTOR & IMPLEMENTS & FEED — Ferguson tractor, new 1950 and as good as new; Ferguson 2-furrowed tractor plow; Ferguson cultivator; Ferguson disc; Ferguson power mower; Ferguson buck rake; M.H. binder, 6 ft. cut; M.H. side delivery tedder and rake; M.H. seed drill; sloop sleigh; medium farm wagon; flat hay rack; dump rake; electric fence; set of slings; Surge electric milking machine with all pipes, pumps, motors, etc., as good as new; pails, strainers, Champion 5 can milk cooler, good as new; 150 feet hay fork rope; hay fork; 2000 lb. high beam scales; faning mill; pulper; cyclone seeder; roll of wire fence; 1000 ft. lumber; 15 cedar poles 20' long; 6 ft. of silage in 10 ft. silo; all small articles.

HOUSEHOLD EFFECTS — McClary Essolene gas stove with all tanks, etc.; McClary cooking range; solid walnut dining room suite, consisting of china cabinet, buffet, extension table; 5 side chairs; arm chair; Beatty electric washing machine; Quebec heater; kitchen cabinet; porcelain top table; chairs; kitchen set; davenport; tubular bedstead, spring and mattress; two dressers; 1 clock; all small articles.

TERMS: Cash settlement with clerk day of sale. No reserve as farm is sold. W. A. GIBSON, Auctioneer. Clinton Swackhamer, clerk.

This superb tea guarantees the flavour of every cup

"SALADA" ORANGE PEKOE

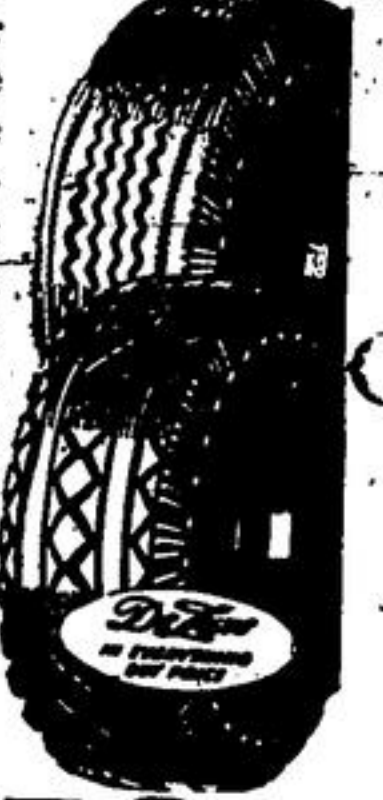
If you've an eye for a buy...

SEE THE GOOD YEAR DeLuxe

at Saxe Motors

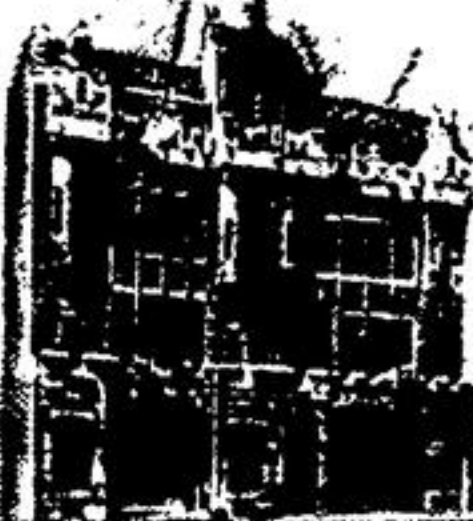
PHONE: 152 W DODGE DESOTO SALES & SERVICE

The new Goodyear DeLuxe gives more mileage... 34% more mileage than the big mileage-Goodyear it replaces. Gives added protection from blow-outs... PLUS super traction... it's Canada's most popular tire... the overwhelming choice of thrifty motorists.



MEN WHO THINK OF TOMORROW PRACTICE MODERATION TODAY

THE HOUSE OF SEAGRAM



As the floods rose, hope went down. And then... your Red Cross was "on the job"! As thousands of flood-stricken Canadians thankfully received emergency food and shelter, their gratitude went out to you—who through your Red Cross contributions helped make possible this merciful relief.

Never before has the peacetime demand on Red Cross Services and funds been so great as in recent times. And never more than today—has your Red Cross so needed your help to prepare for the tasks of tomorrow. Give generously!

\$5,000,000 IS NEEDED NOW TO MEET TOMORROW'S NEEDS

the work of mercy never ends.



LOCAL HEADQUARTERS—TELEPHONE 19