



# GEORGETOWN

We have turned the town upside down!

You'll agree with us in March



MARCH						
Sun.	Mon.	Tues.	Wed.	Thur.	Fri.	Sat.
4	5	6	7	8	9	10
11	12	13	14	15	16	17
18	19	20	21	22	23	24
25	26	27	28	29	30	31

# BRILL'S

## Open Bowling

WEDNESDAYS and FRIDAYS

from 9.30 p.m.

ALL DAY SATURDAYS

10 a.m. till 11.30 p.m.

## Lucky Strike Club

Mill Street

Phone 315J

### FOR M LIONS CLUB IN ERIN VILLAGE

With the Georgetown Lions Club as sponsoring club, a group of 24 Erin men have grouped to form a new Lions Club in that town.

At an organization meeting last week, Robert McEnery was chosen as first president, Cecil Carney, Del Dinsdale and Dr. Ben Wingrove vice presidents, Fred Steen, treasurer and an ex-Georgetown resident, Larry MacKenzie, secretary. Other officers are: A. Douglas, F. Wilson, J. McKenzie, Bert Smith, directors; Clarence Young, Lion Tamer; Bob Meehan, Tail Twister.

A number of Georgetown Lions attended the meeting, including Don Barrager, Jack Armstrong, Norman Smith, Bill Barry and J. L. Lambert.

### FARM NEWS

#### Plans Made For County Seed Fair, Bacon Show

The annual Halton Seed Fair & Bacon Show is one of the largest attended annual events held in Halton. This year's event is to be held in the Town Hall, Milton, on March 16th and 17th. As in former years, Halton Hog Producers will have the opportunity of nominating hogs for the competitive bacon show which would be conducted on an inter-county basis. According to Percy Merry, president of the Halton Hog Producers, the final selection of the five entries will be made by the directors of the respective Townships. Each producer may nominate only one hog and those selected must be marketed on March 5, 6, and 7. These hogs will be processed at Canada Packers Ltd. and one side from each of the twenty hogs will be brought out to the Halton Show.

We understand from C. F. Pickett, president of the Halton Crop Association, that the annual prize list for this Seed Fair and Bacon Show is now available. This prize list is stated by W. S. McMullen of the Federal Live Stock Branch to be the most informative booklet issued by any County Association in the province. Copies may be secured on request from the Agricultural Office, Milton.

As in former years the open Seed show will be a strictly commercial show open only to those with need for sale and such entries must be backed by Government grade. Furthermore, the exhibitors must be prepared to deliver to purchasers seed identical in quality with that exhibited. Provision is being made for a Junior Farmer Section with competitive classes for Oats, Barley, Wheat and educational displays. In addition a number of commercial firms are planning to make displays. The programme on Saturday, March 17th, will be up to the usual high standard, a few of the highlights being the annual Junior Farmer judging competition in grain and seeds, hog carcasses, etc., an address by W. P. Watson, Ontario Livestock Commissioner, whose addresses always attract a record crowd; the auction sale of ten bushel lots of oats and barley, etc. In short the arrangements for the 1951 event would indicate an annual show "Bigger and Better Than Ever."

#### Wellington Warden of District Pioneer Stock

Wellington County's 1951 Warden, Golden Burt, reeve of Erin Township where he is a third generation farmer, has some Georgetown connections as well for his ancestors were once resident here on the property just out of town limits which is known as Wildwood. He is a brother of Lawrence Burt of Georgetown.

1951 marks Mr. Burt's sixth year on county council and for three years has served on the important county road committee, of which he was chairman in 1949.

Warden Burt has represented Erin Township on county council for six years, the first two as deputy-reeve and this year marking his fourth term as reeve. He is prominent in the Masonic Order, being a past master of Wellington Lodge, Erin and a member of the Guelph Chapter, Scottish Rite.

He is a prominent farmer in the eastern end of the county and operates the farm which was founded by his grandfather, in the early years of the county. John Wilson Burt, the grandfather came from Scotland with his parents in 1828, and served for 12 years as Erin Township reeve, later being auditor for 40 years. John W. Burt, Jr., father of the present reeve, succeeded his father on the homestead known as "Aberdeen Stock Farm", where he gained a continent-wide reputation as an Aberdeen-Angus breeder. He also had outstanding Clydesdale horses including "Star of Roses", one of the most popular horses in Canada.

Mr. Burt's great-grandfather George, settled in Erin in 1830 and was tax collector for the township for some 12 years after 1840, the taxes then having to be taken to Hamilton. It is not commonly known that at one time Erin and Eramosa were parts of Halton County.

#### Doug Runions Injured In Car-Train Crash

Doug Runions, playing coach of Walkerton Merchants, Intermediate OHA entry, and a former coach of Georgetown Raiders, narrowly escaped serious injury in a car-train crash last week.

Mr. Runions was returning to his home in Neustadt from Walkerton via Hanover and as he was proceeding down a steep grade to the CPR tracks he became aware that the afternoon train was also approaching the crossing. On the slippery incline the brakes failed to stop the car and Runions leaped from the car as it was striking the train.

Runions received a bad shaking and a leg injury which will probably keep him out of hockey for several games. The car was thrown against him and he was

# CARROLL'S

Prices are low everyday

- GRAPEFRUIT JUICE 12-1/2c, 31c
- TOMATO JUICE 23c
- DESSERT PEARS 18c
- PINEAPPLE 29c
- Pitted DATES 19c

LYNN VALLEY GOLDEN KERNEL CORN IN BRINE 2 TINS 21c

- DANDEE TEA 38c, 75c
- PEANUT BUTTER 35c
- New! Sugar Crisps 2 PKGS 35c
- CEREAL for BABY HEINZ - PKG. 23c
- Quick Quaker Oats 35c

RED SALMON FANCY COHOE 1/2-LB. TIN 31c

- CREAM CORN 25c
- SLICED BEETS 12c
- TOMATO JUICE 23c
- SPAGHETTI 14c

LYNN VALLEY SIEVE 4.5 PEAS 2 TINS 25c

- Fruit Salad 33c
- RED RASPBERRIES 29c
- PINEGLO 27c
- FAST FUDGE MIX 31c
- Mother Parker's COFFEE \$1.05

FREE - PLASTIC MIXING SPOON WITH KELLOGG'S ALL-BRAN 1 LG. PKG. 23c

- Kibble or Meaties 14c
- CHICKEN HADDIE 23c
- SPICE CAKE MIX 35c

FRESH McCORMICK'S FIG BARS LB. 29c

- Fancy Macs, extra special APPLES bskt. 59c
- California, Iceberg, 5's LETTUCE ea. 15c
- Cello TOMATOES pkg. 29c
- Florida, 98's GRAPEFRUIT 4 for 29c

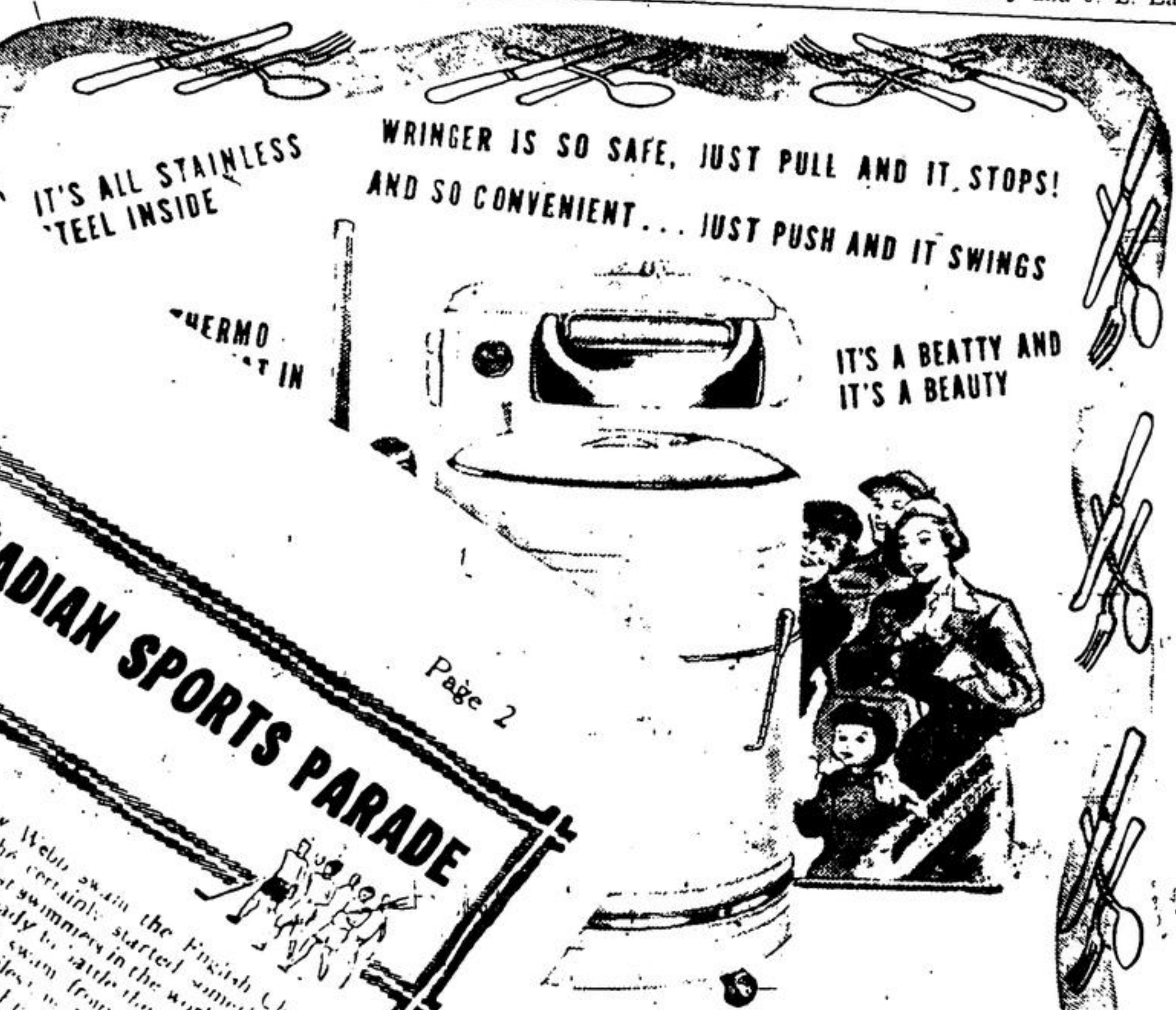
## ENJOY TELEVISION WHILE YOU EAT

Television, now installed in our dining room, makes a snack doubly enjoyable.

Hot Dogs - Lovely Chicken Sandwiches at modest prices.

## RETA'S (HUNTER'S INN)

9th Line at Maple Avenue



## CANADIAN SPORTS PARADE

er News in Years

## Beatty

### ESS STEEL WASHER

development in washer design - new stainless steel inner tub - Washer wins instant approval. You know that stainless steel is for lifetime of satisfactory use. Won't and see it, too.

BIGGEST TRADE-IN ALLOWANCE IN TOWN. REGULAR, LEGAL TERMS ON REMAINDER. BEATTY WASHERS ARE PRICED FROM \$129.50

## Richardson's Hardware

PHONE 25 MAIN STREET

EN Captain Matthew Webb swam the English Channel on August 24, 1875. He was the first man to swim the distance. The next man to swim the Channel was Captain Webb in 1901. He was the first man to swim the Channel in less than 14 hours. The next man to swim the Channel was Captain Webb in 1901. He was the first man to swim the Channel in less than 14 hours. The next man to swim the Channel was Captain Webb in 1901. He was the first man to swim the Channel in less than 14 hours.